

BEAR CREEK PARK

PUBLIC OPEN HOUSE

/ 1



What's important to you in shaping Surrey's Bear Creek Park?

This Open House focuses on the planning and conceptual design of the new destination sports facility at Bear Creek Park. The proposed facility will upgrade an existing track and sports field to international standards. Please share your ideas and comments to help finalize the project plan.

 *We are on the traditional territory of the Coast Salish Peoples.*

1. Sign in

2. View the display boards and **share your feedback** with staff. Project team members are available to provide information and answer your questions about the park. **Your input will help to:** build a cohesive vision to enhance the existing athletic amenities in Bear Creek Park and define the spaces required to enhance the sports complex.

3. Fill out the survey on an iPad here or online at your own convenience.

Find your survey here:
surrey.ca/newparks



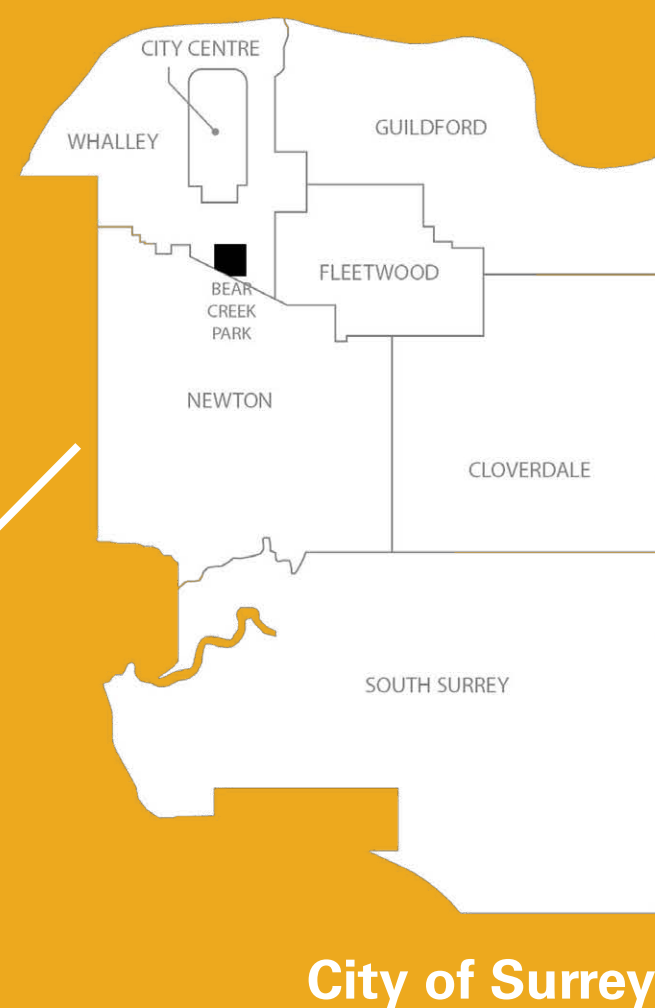
[SURREY.CA/NEWPARKS](https://surrey.ca/newparks) / [#SURREYPARKS](https://twitter.com/SURREYPARKS)

DESTINATION SPORTS FACILITY

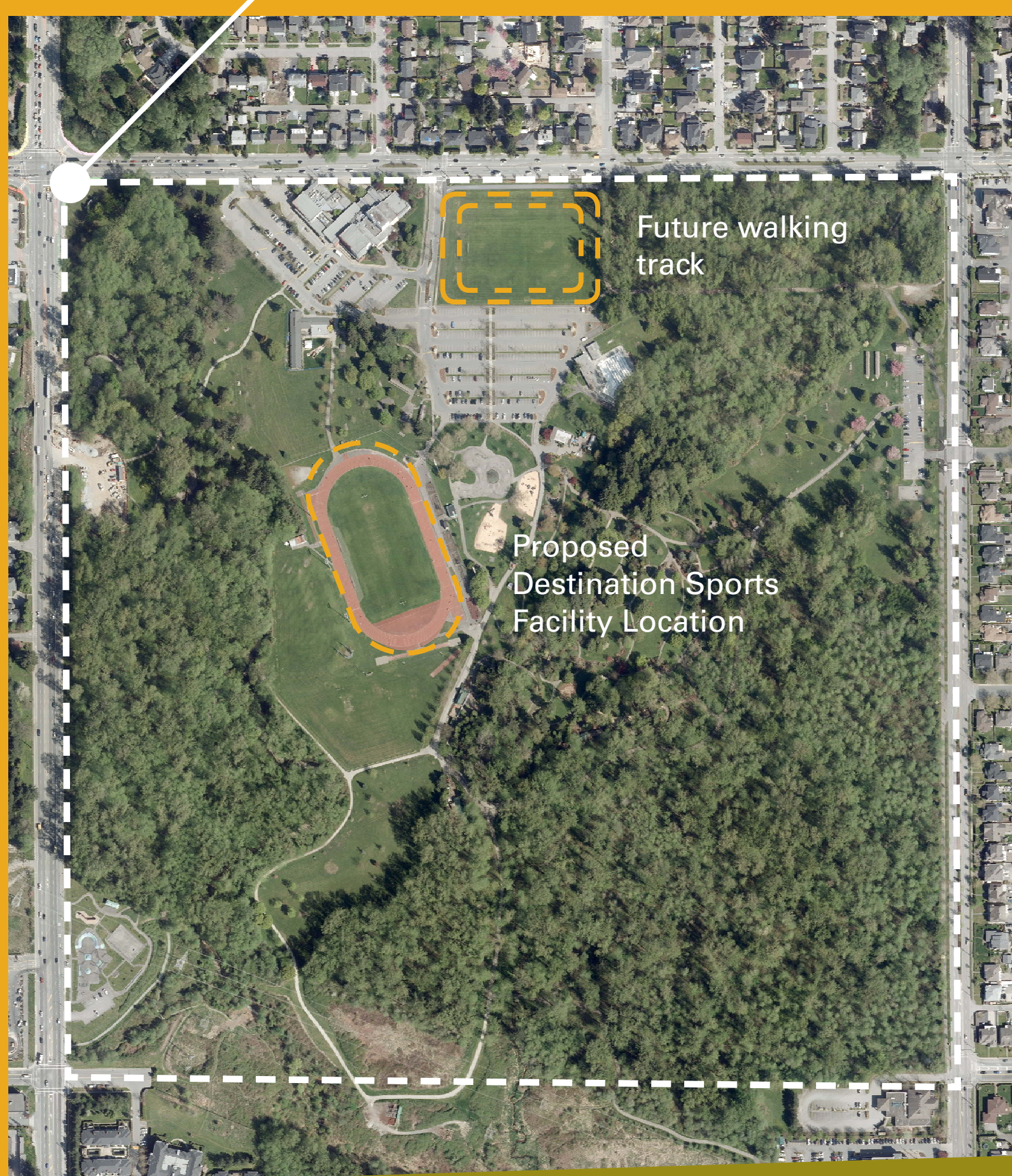
VISION, BACKGROUND & LOCATION

Background

The proposed facility will upgrade an existing track and sports field to international standards and replace existing wooden bleachers with a modern, 2200 seat grandstand with covered seating and supporting amenities to be constructed in 2022-23. A new rubberized walking track around the northern field is currently under construction.



City of Surrey



Draft Vision

Bear Creek Park Destination Sports Facility will enhance Bear Creek Park, creating a vibrant athletic destination integrated with the natural environment, connecting park experiences and patrons.

Principles

- + A place for all to thrive
Accessible to all, it will promote individual and collective wellness, encouraging all members of the community to be more active through the integration of passive and active recreation opportunities.
- + A world class athletic destination
A unique athletic facility that provides year-round all-weather training and serves the community for generations to come.
- + Connected
Enhance the park for all users, providing connectivity to upgraded amenities in the park.
- + Integrated
A facility that seamlessly integrates into the park and enhances the natural environment.
- + Design excellence
A design that expresses the City of Surrey's commitment to provide world class public facilities that enhance the experience of all users and leads in achieving broader sustainability initiatives.

Tell us what you think!




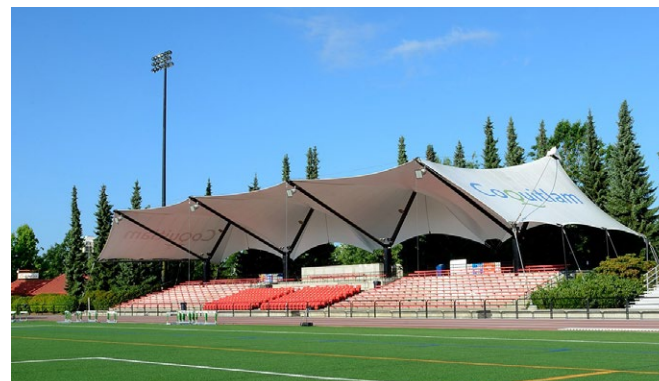


DESTINATION SPORTS FACILITY

REGIONAL CONTEXT

How will a new destination sports facility at Bear Creek Park best serve the residents of Surrey and the region? Explore the existing and future planned track & field facilities in the region.



Existing Regional Track & Field Facilities

<p>1</p> <p>UBC Dhillon track Vancouver, BC</p> <p>+ Seating for 300+</p> 	<p>2</p> <p>Swangard Stadium Burnaby, BC</p> <p>+ Seating for 4200</p> 	<p>3</p> <p>Burnaby Central Burnaby, BC</p> <p>+ Small seating area</p> 	<p>4</p> <p>Percy Perry Stadium Coquitlam, BC</p> <p>+ Seating for 1600, 200 standing and 300 external bleachers</p> 	<p>5</p> <p>Minoru Sports Complex Richmond, BC</p> <p>+ Seating for 2000</p> 	<p>6</p> <p>McLeod Stadium Langley, BC</p> <p>+ Seating for 2200</p> 
--	---	---	---	---	---

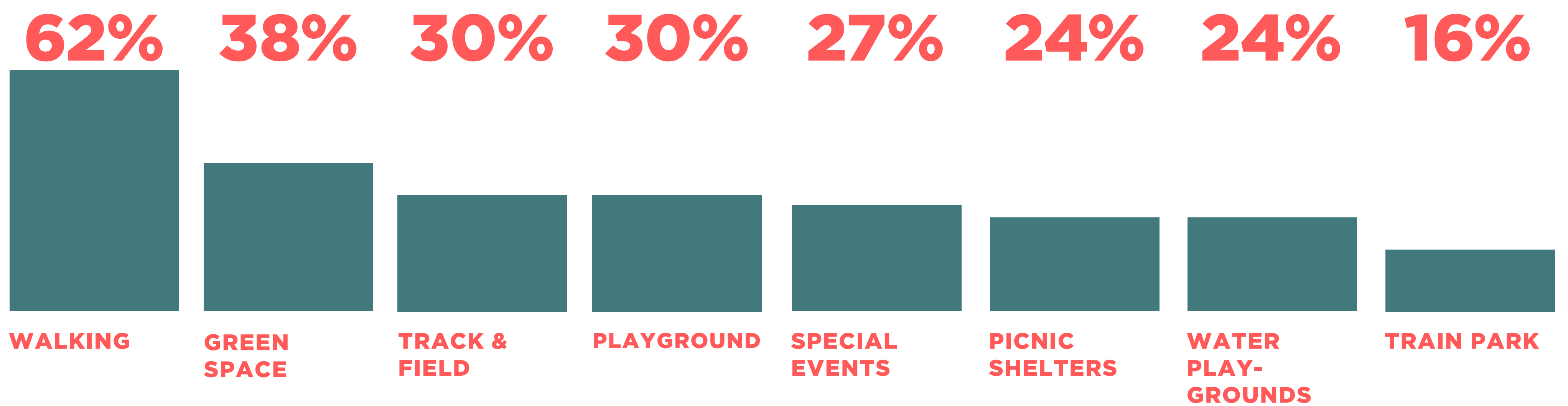
Future Regional Track & Field Facilities

<p>1</p> <p>West Vancouver Secondary School West Vancouver, BC</p> <p>+ Seating unknown + Estimated 2020</p>	<p>2</p> <p>SFU Stadium Burnaby, BC</p> <p>+ Seating unknown + Estimated 2020</p>	<p>3</p> <p>South Delta Secondary School Delta, BC</p> <p>+ Seating unknown + Date unknown</p>	<p>4</p> <p>North Delta Secondary School Delta, BC</p> <p>+ Seating unknown + Estimated 2021</p>	<p>5</p> <p>Bear Creek Park Athletics Center Surrey, BC</p> <p>+ Seating for 2200 + Estimated 2022</p>	<p>6</p> <p>Maple Ridge Secondary Track Maple Ridge, BC</p> <p>+ Seating unknown + Date unknown</p>	<p>7</p> <p>Abbotsford, BC</p> <p>+ Seating unknown + Estimated 2024-2028</p>	<p>8</p> <p>Chilliwack, BC</p> <p>+ Seating unknown + Date unknown</p>
---	--	---	---	---	--	--	---

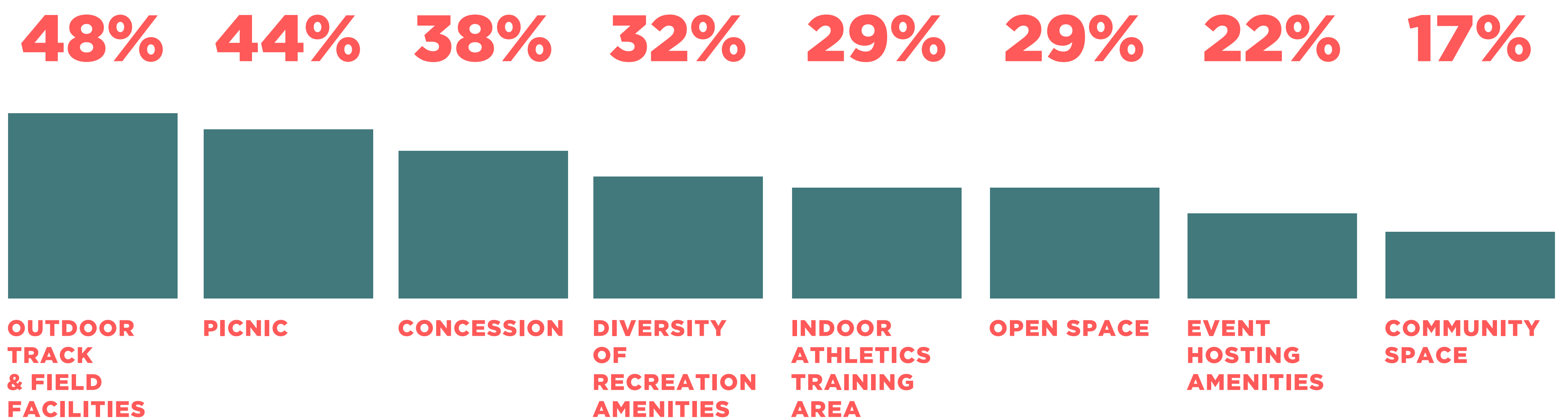
DESTINATION SPORTS FACILITY

WE ASKED YOU

Why do you visit Bear Creek Park?



What would best serve the community in the new Bear Creek Park Destination Sports Facility?



YOUR TOP CONCERNS:

Preservation of natural area and trees; availability of parking and traffic congestion during events; access from transit; usability in wet weather; better washrooms; healthy concession food

OVER 1850 RESPONSES

950+ Responses



CITYSPEAKS PANEL
July 3 - July 29 2019

890+ Responses



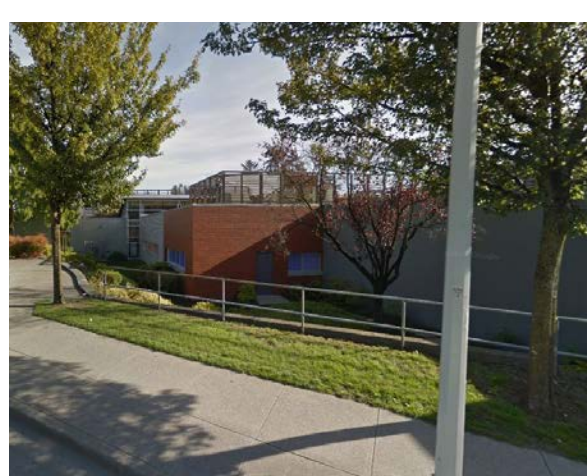
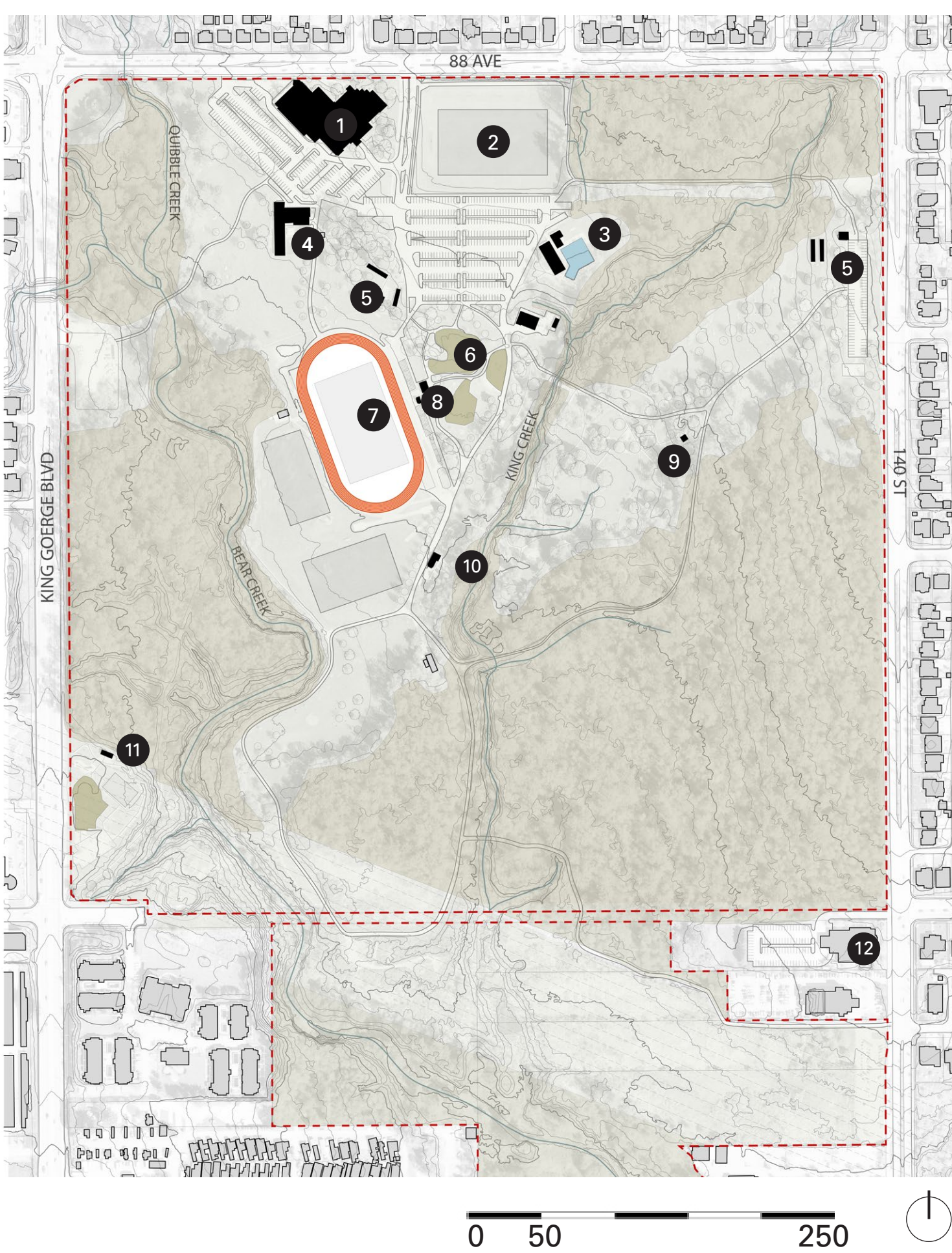
OPEN COMMUNITY SURVEY
July 3 - July 29 2019

52%

Visit the park at least once a month

DESTINATION SPORTS FACILITY SITE ANALYSIS

EXISTING AMENITIES



1 Surrey Arts Centre



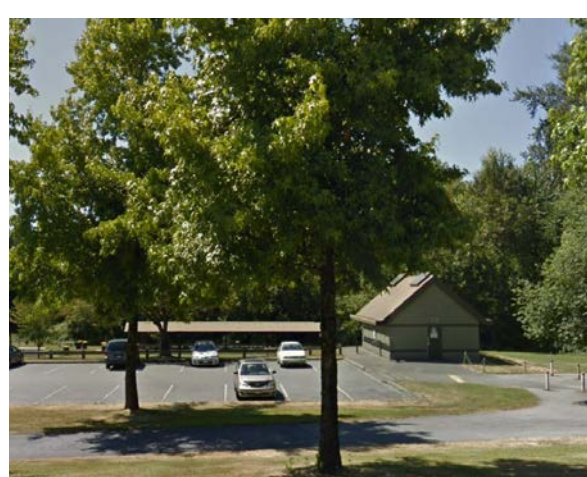
2 Sports Fields



3 Bear Creek Outdoor Pool



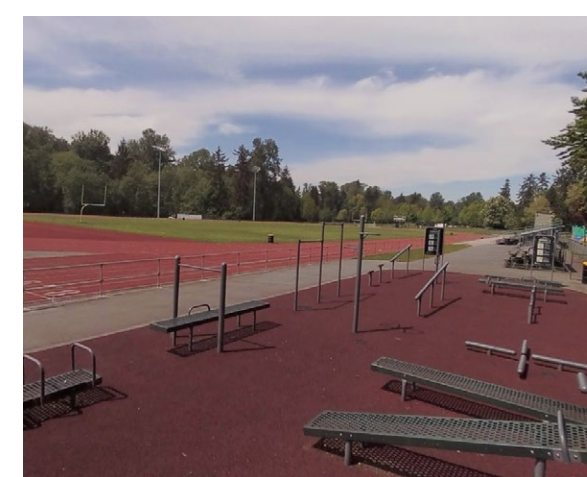
4 North Surrey Minor Football Pavilion



5 Picnic Shelter



6 Spray Park



7 Existing Track & Field Amenities



8 Public Washrooms



9 Chapel in the Woods



10 Bear Creek Train Park & Mini Golf

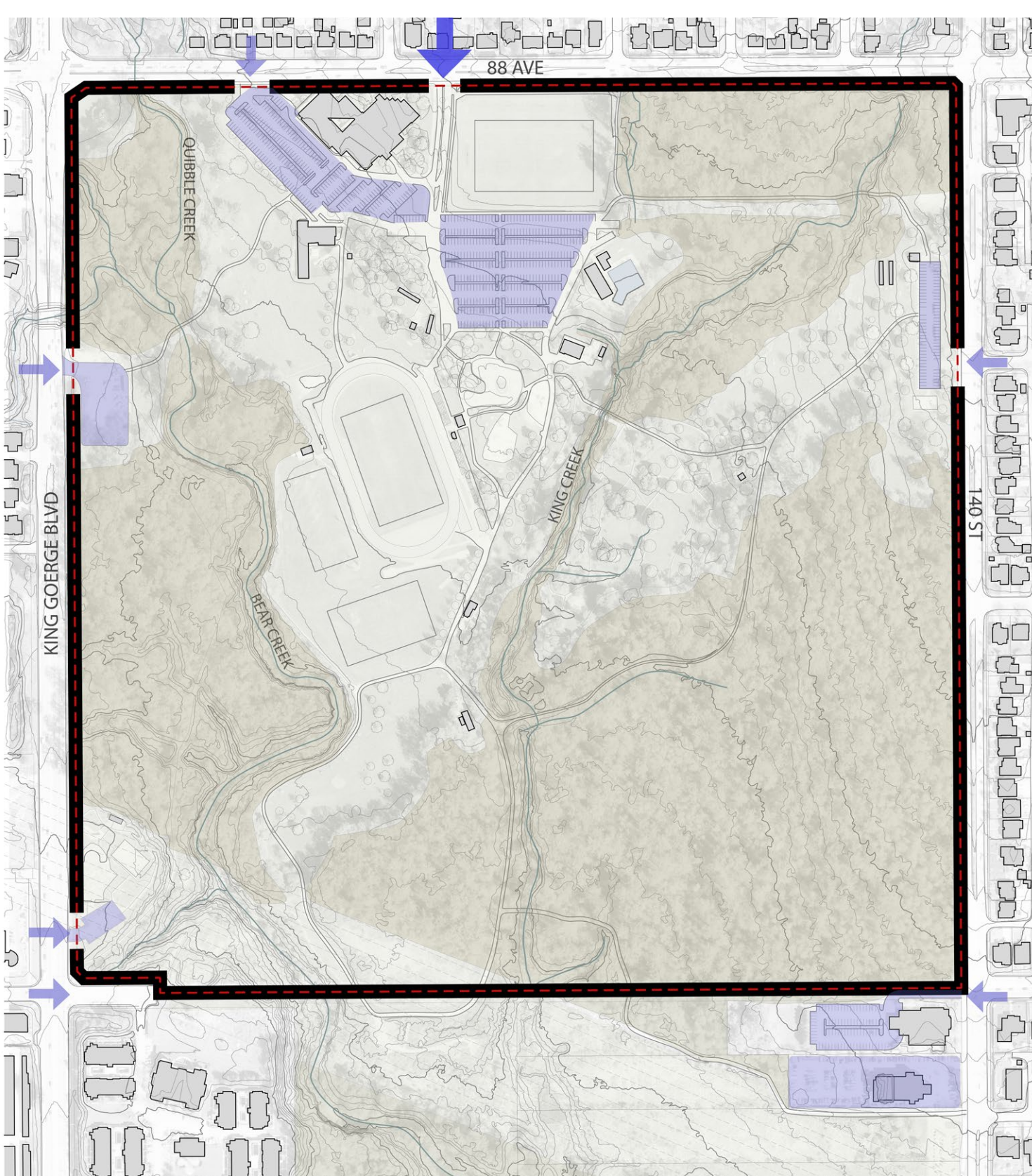


11 Skateboard Park



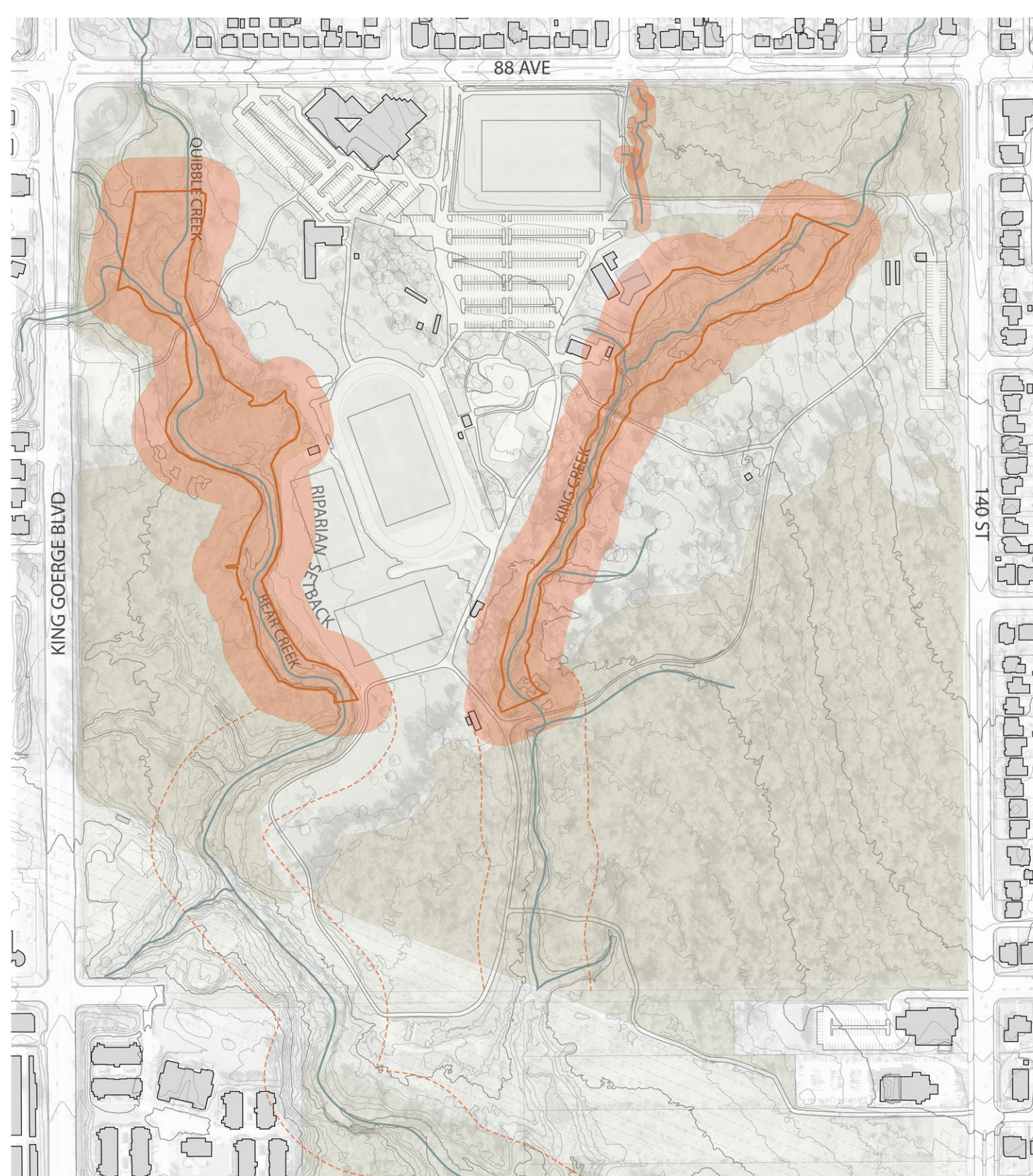
12 Bear Creek Community Church

ACCESS & PARKING



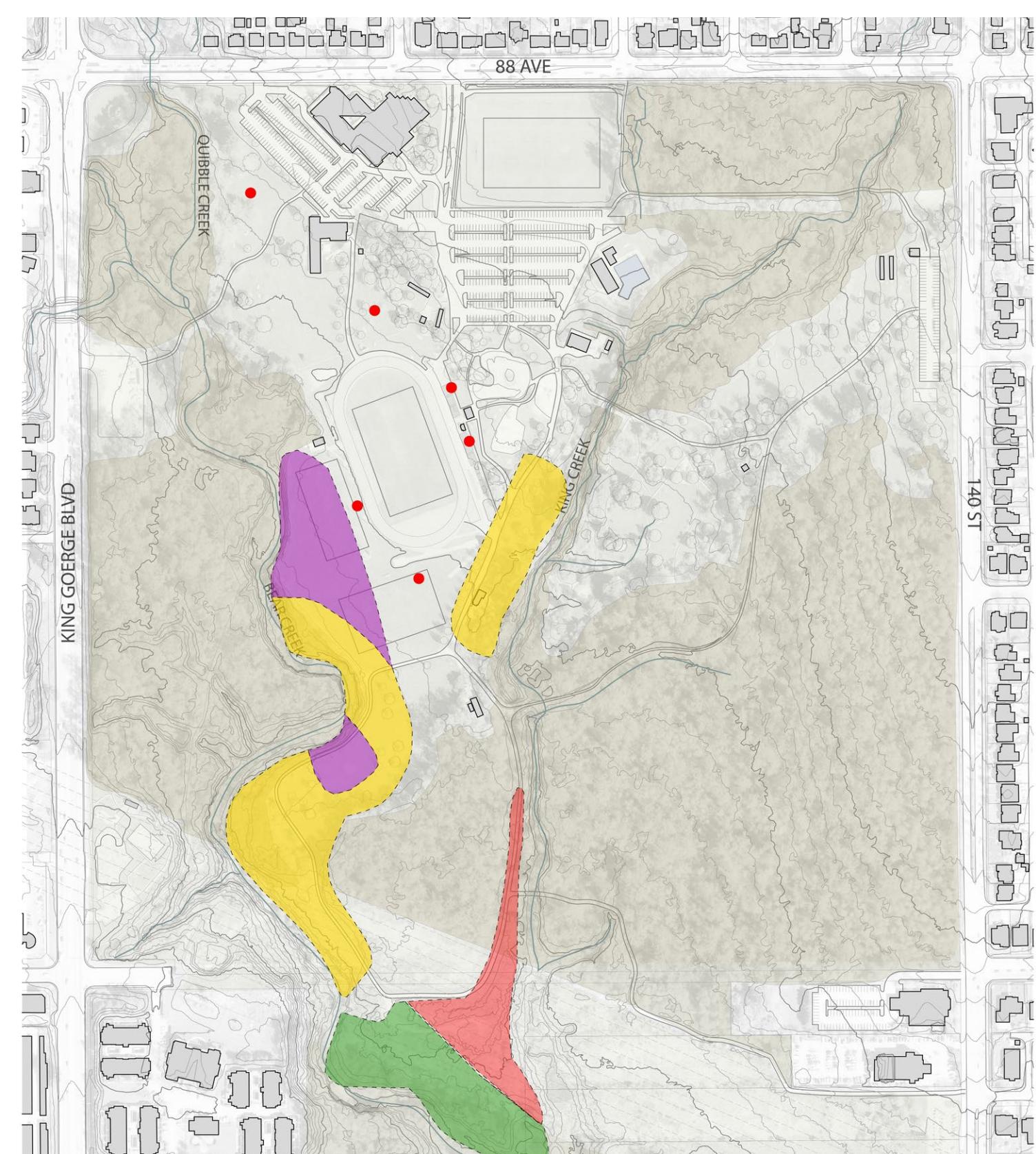
- LEGEND
- Park Boundary
 - ← Main entrance
 - Parking
 - Limits
 - ← Vehicle entrance

RIPARIAN AREA & SETBACKS



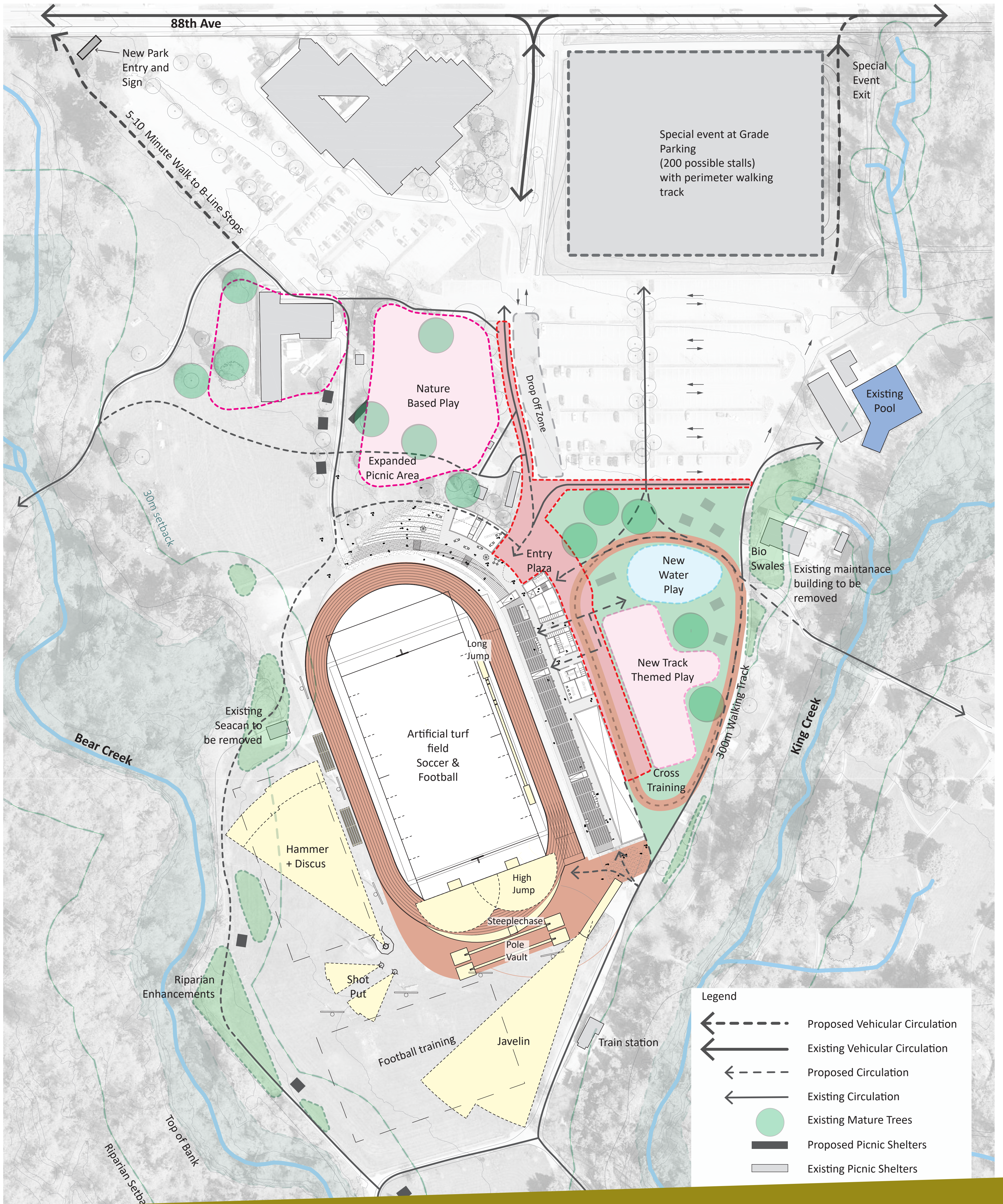
- LEGEND
- Watercourses
 - Top of Bank
 - Cos Setback

LANDFILL & SOIL CONDITIONS

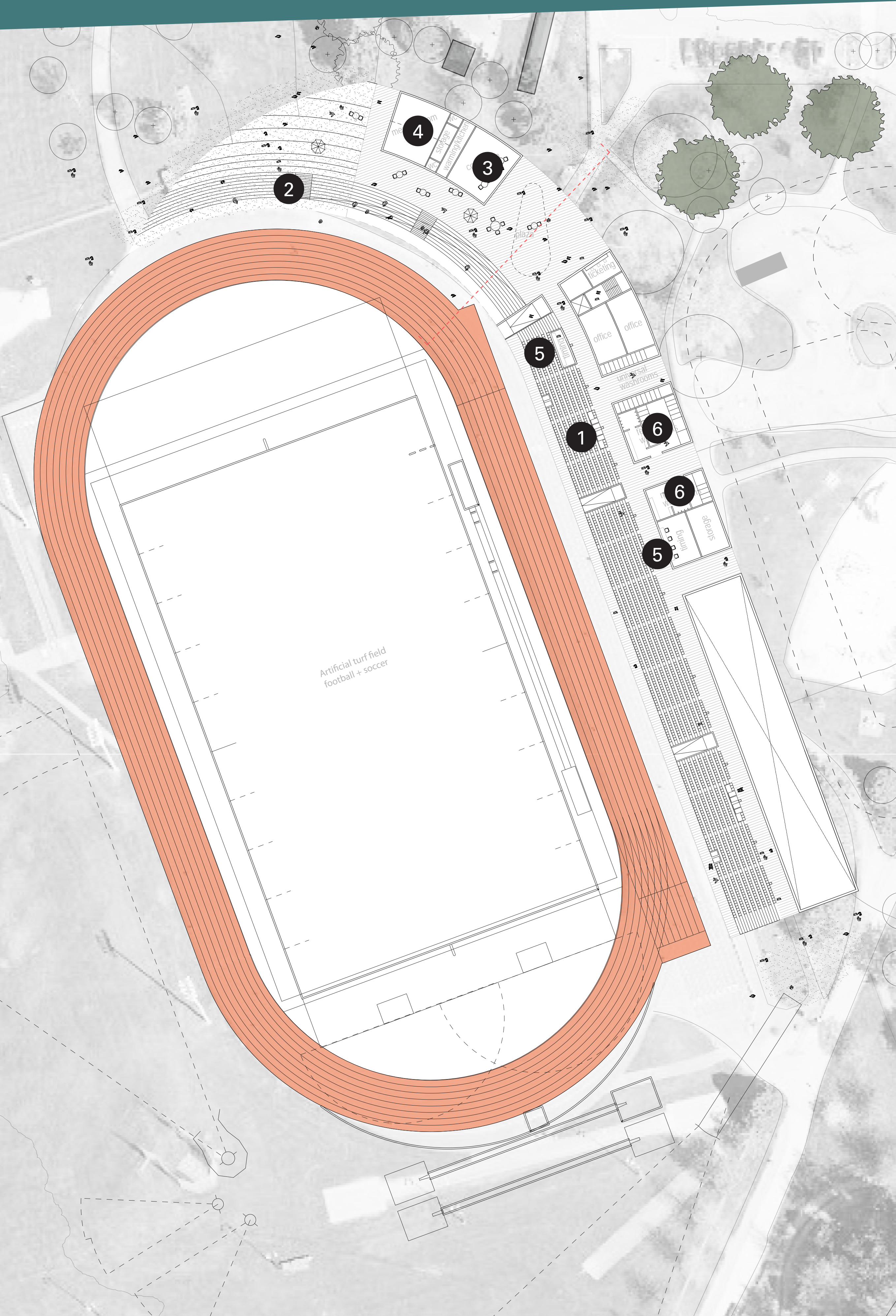


- LEGEND
- 1954-1961
 - 1961-1963
 - 1963-1966
 - 1966-1971
 - Geotechnical points

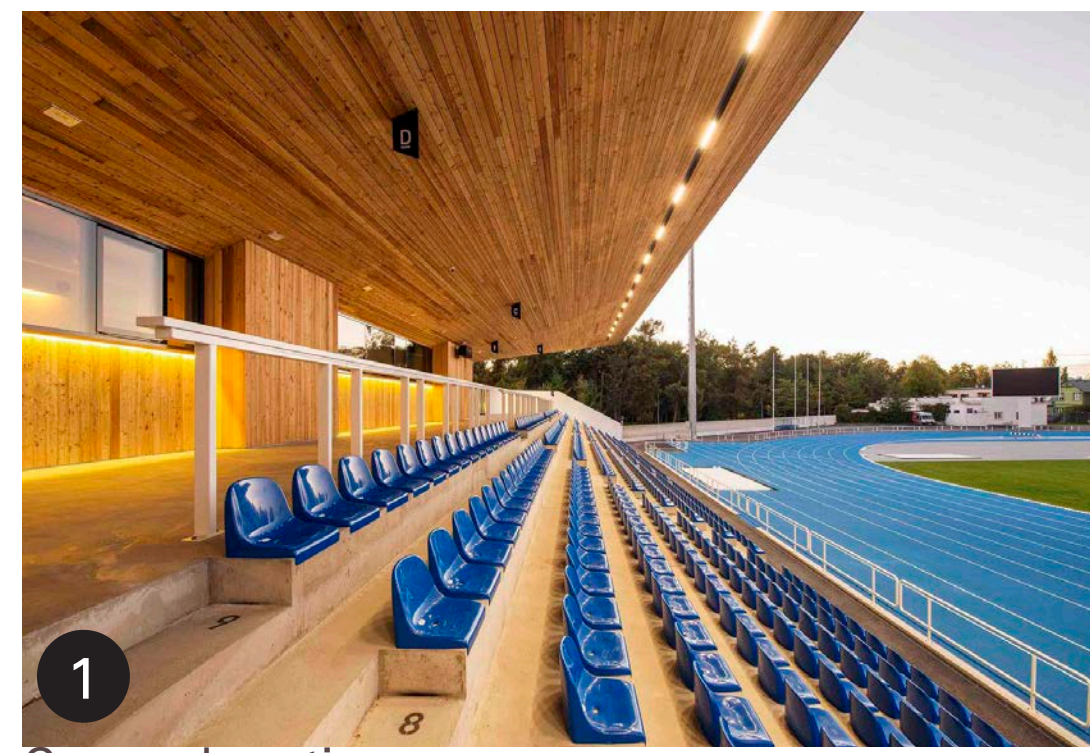
DESTINATION SPORTS FACILITY PARK CONCEPT



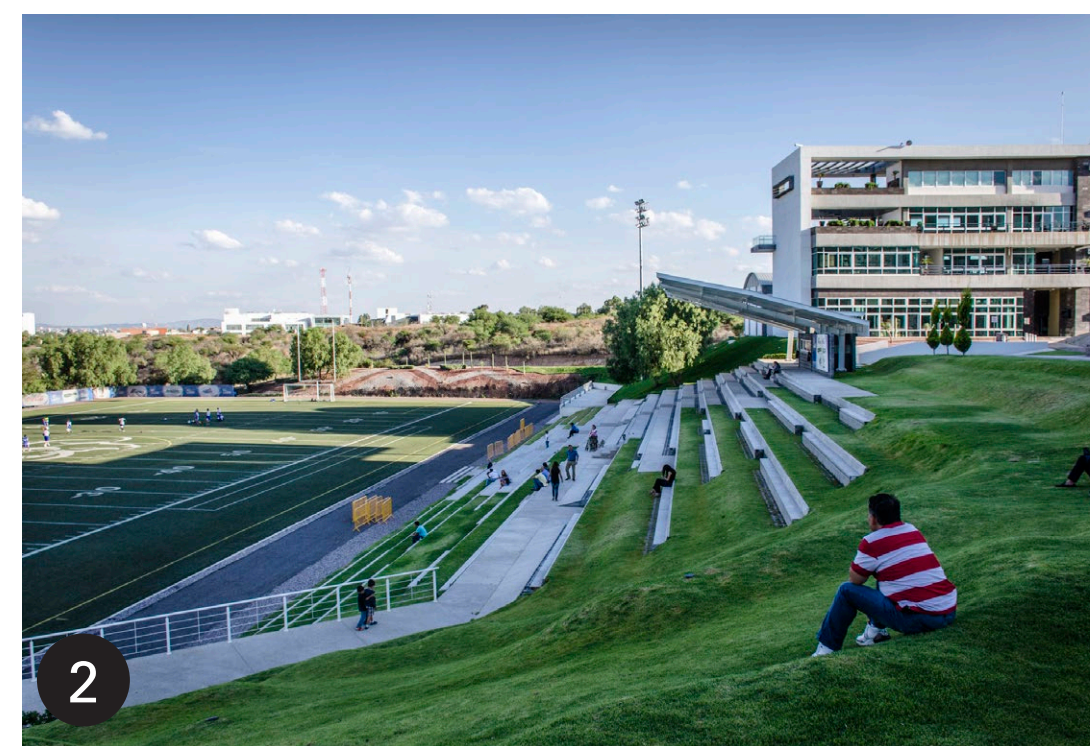
DESTINATION SPORTS FACILITY FACILITY CONCEPT



Upper level plan



1 Covered seating



2 Informal seating



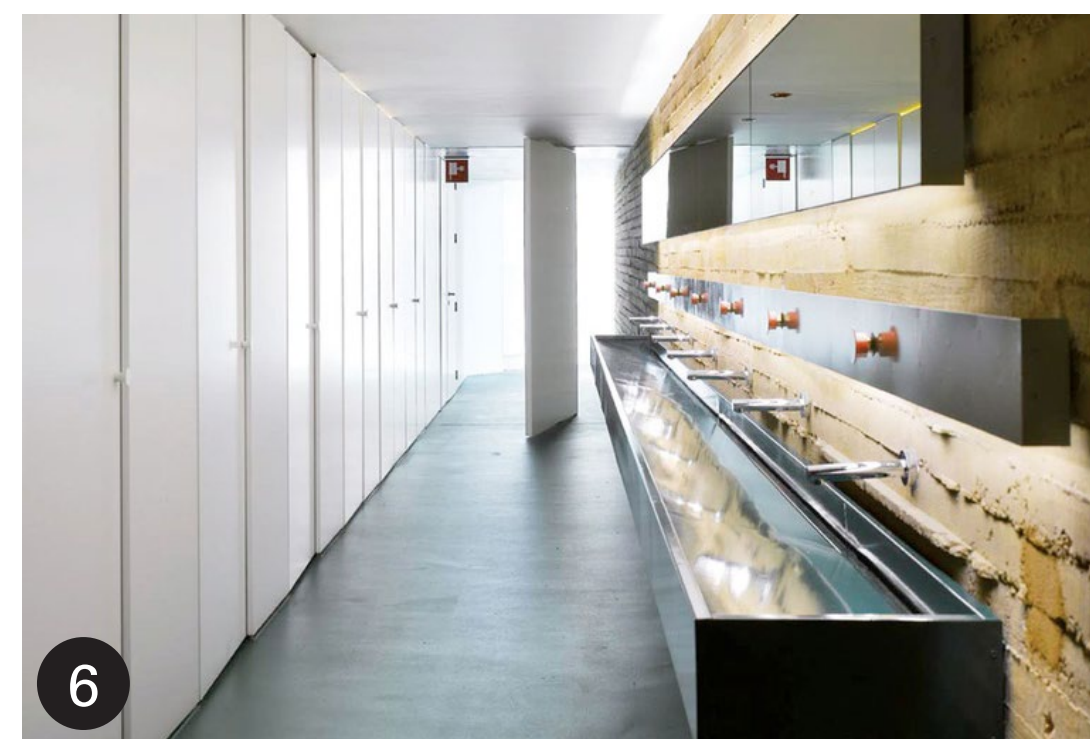
3 Concession



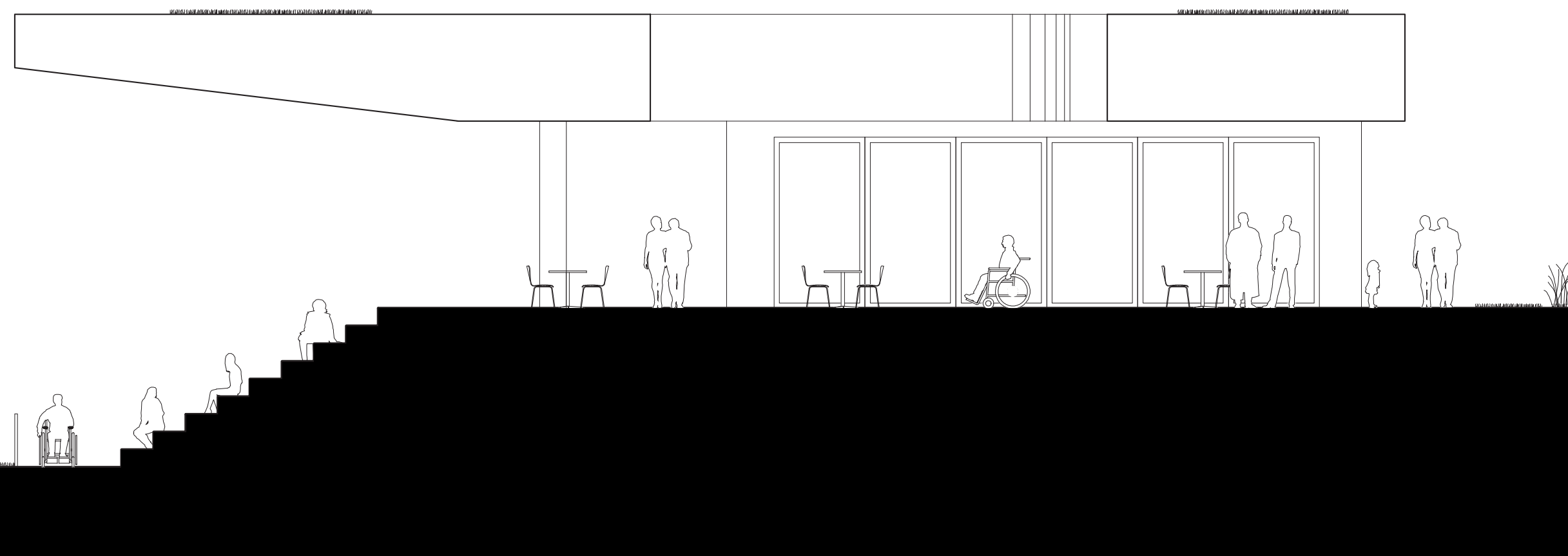
4 Meeting room



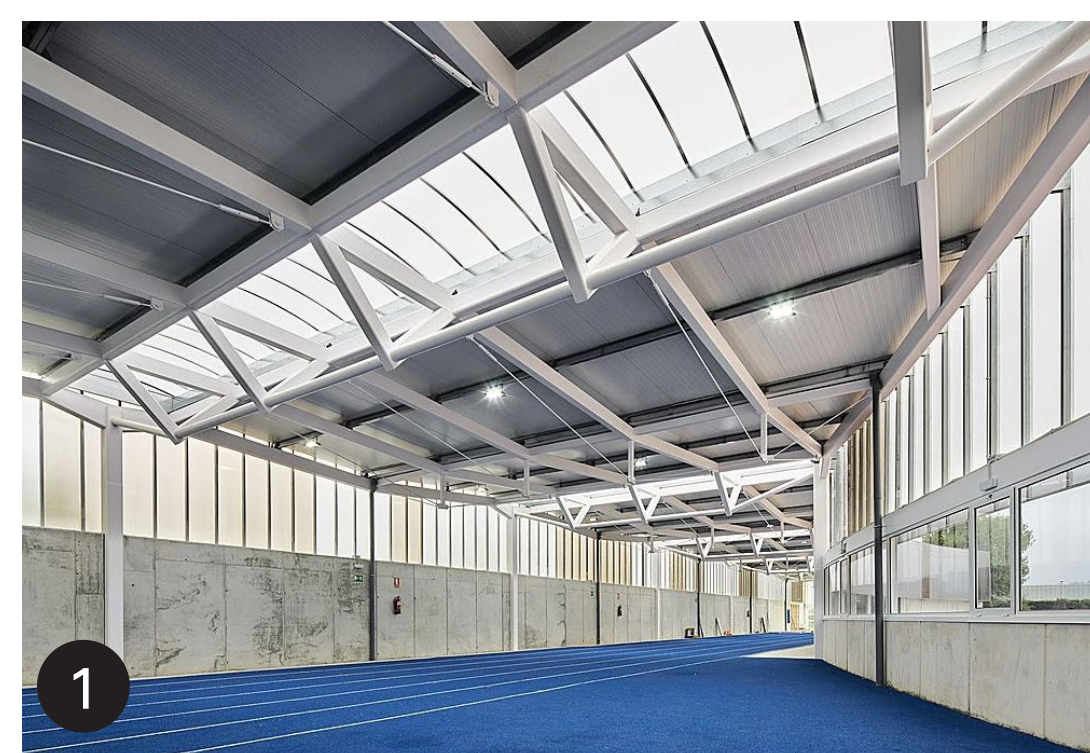
5 Timing booth



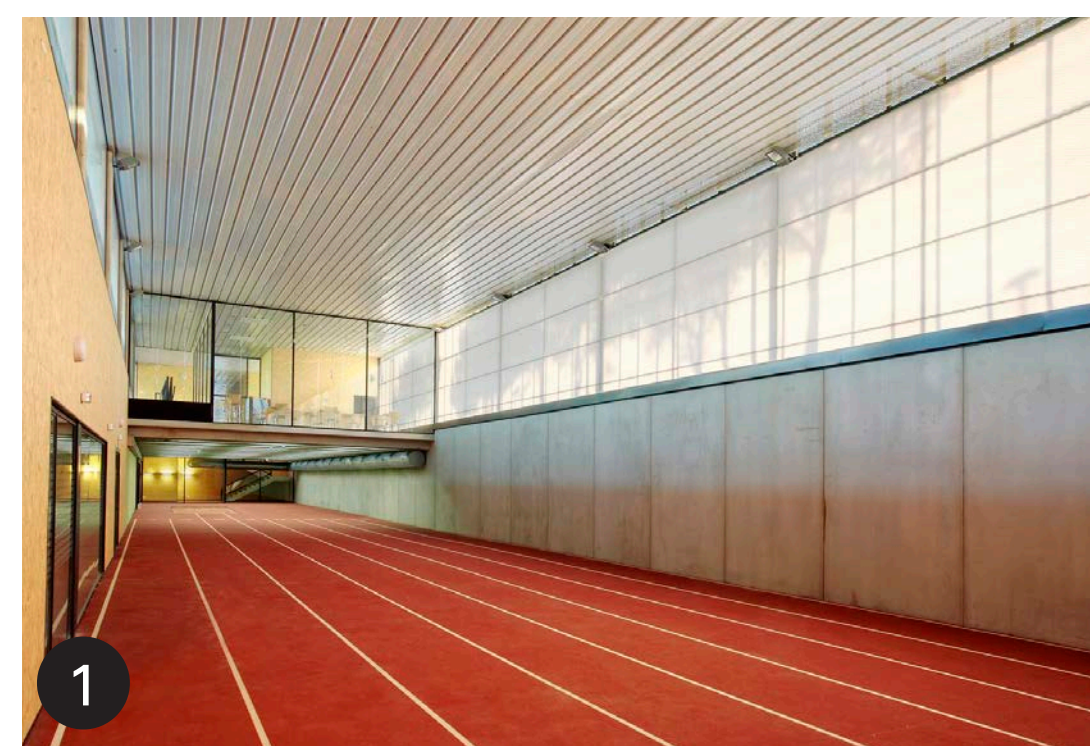
6 Washrooms



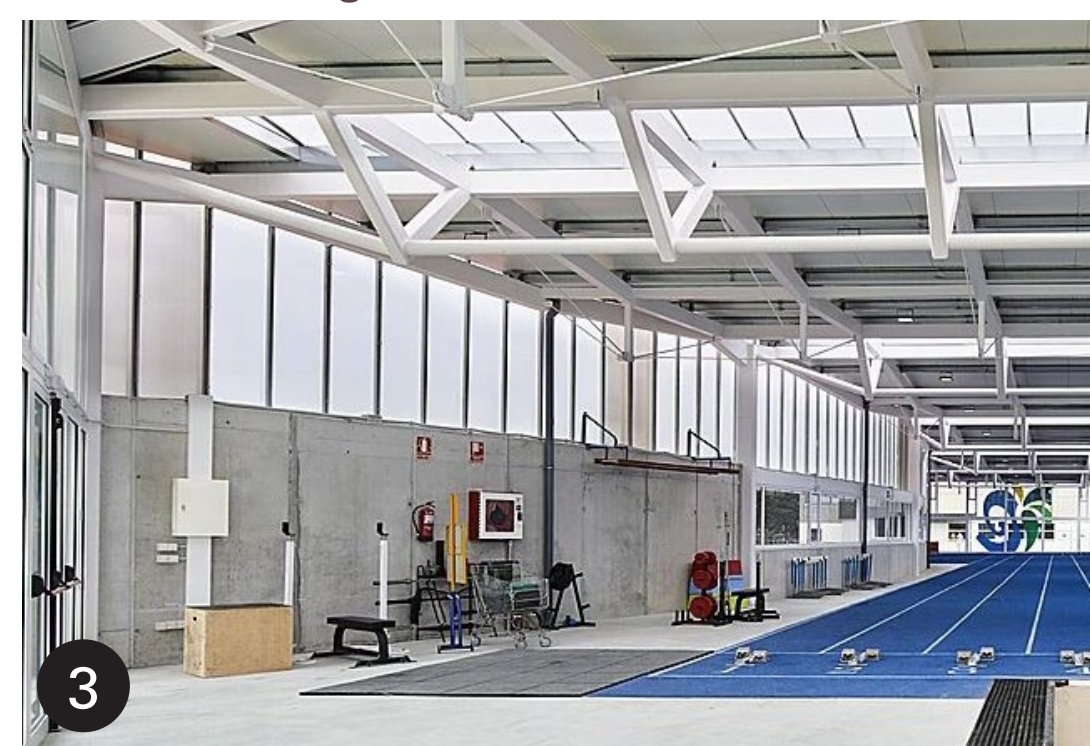
DESTINATION SPORTS FACILITY FACILITY CONCEPT



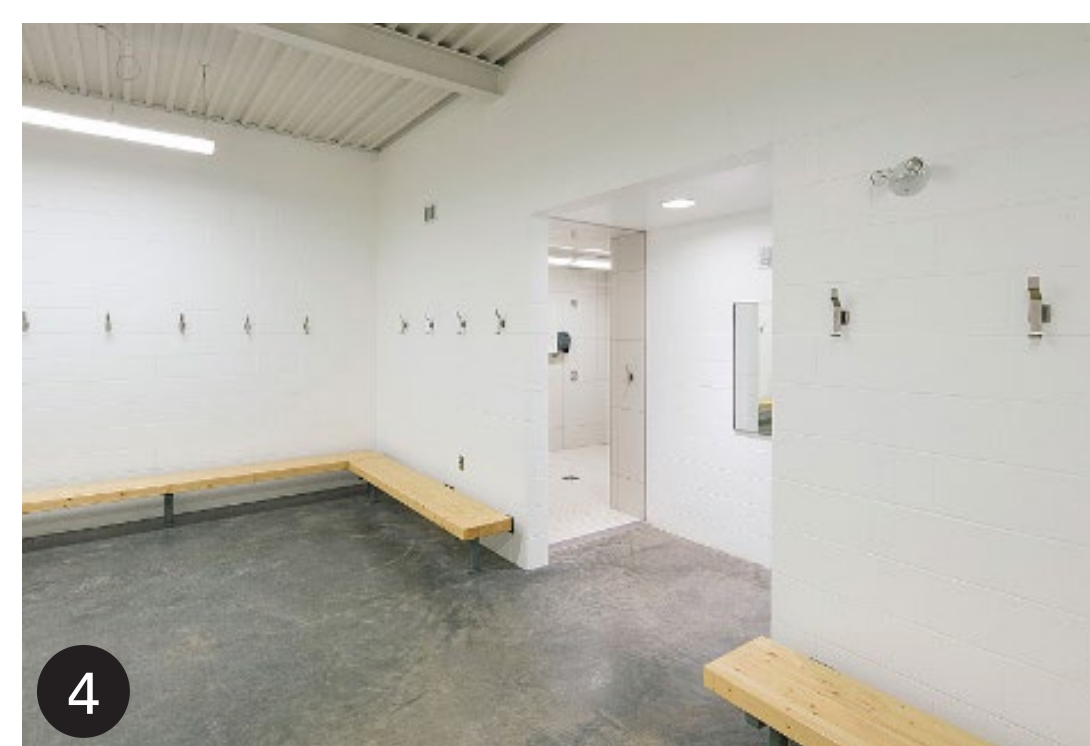
Indoor training



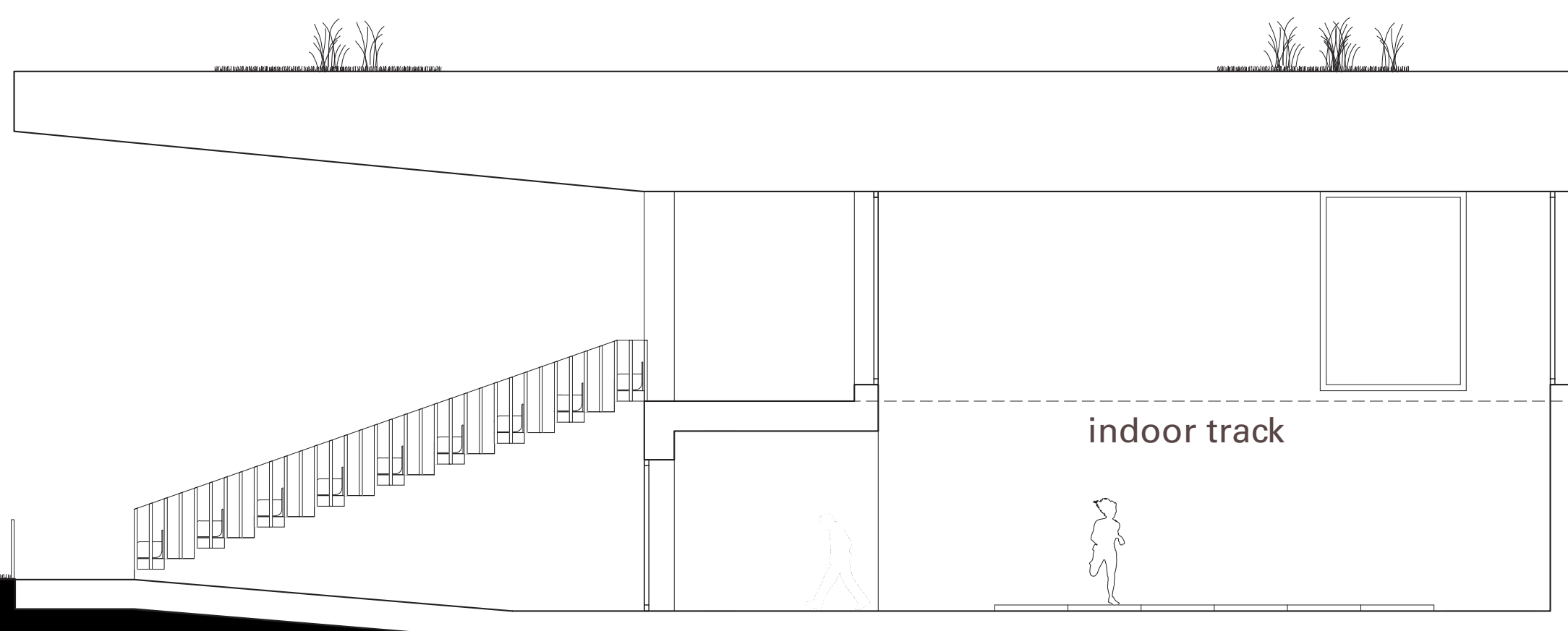
Indoor training



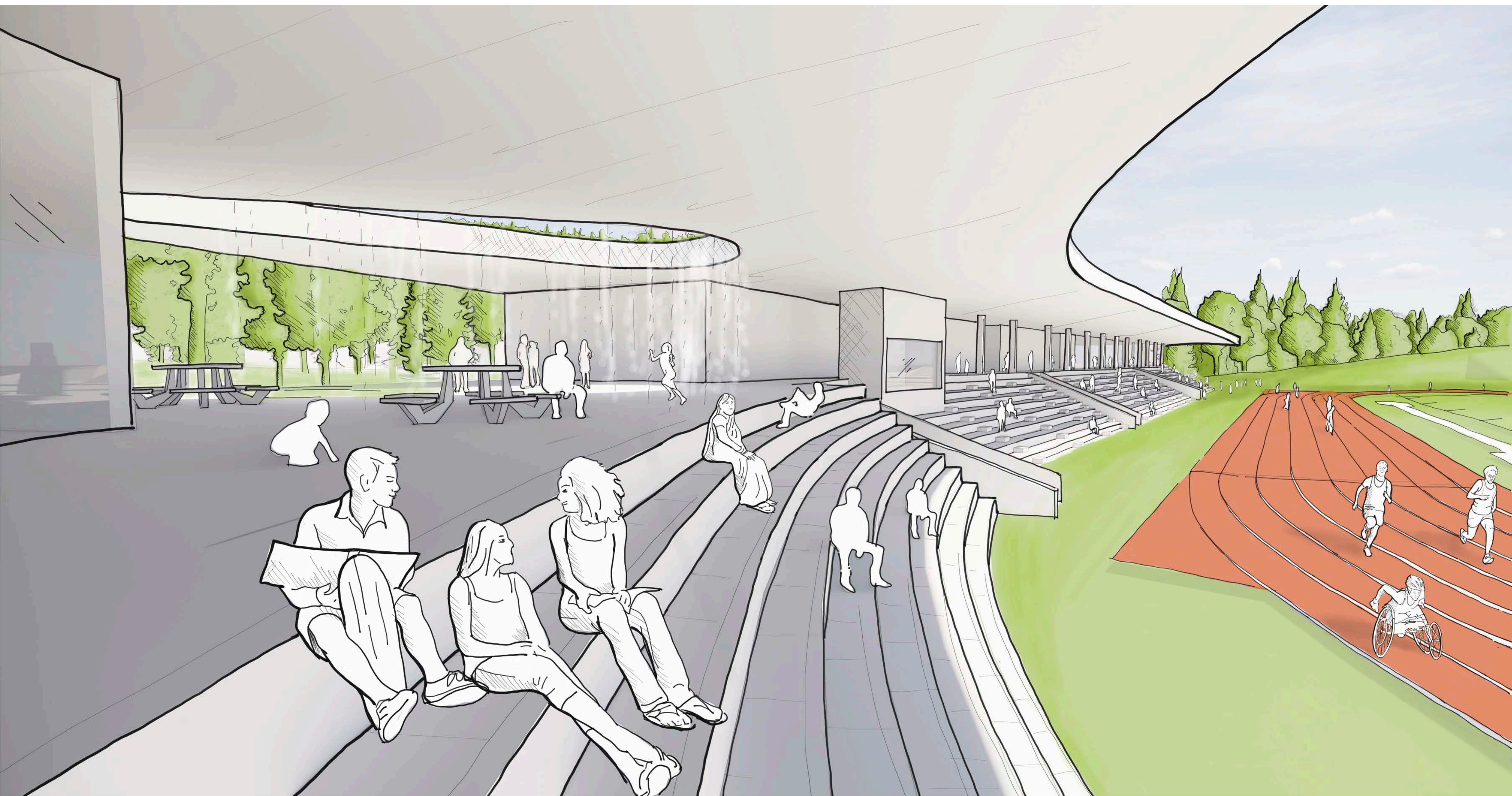
Indoor fitness



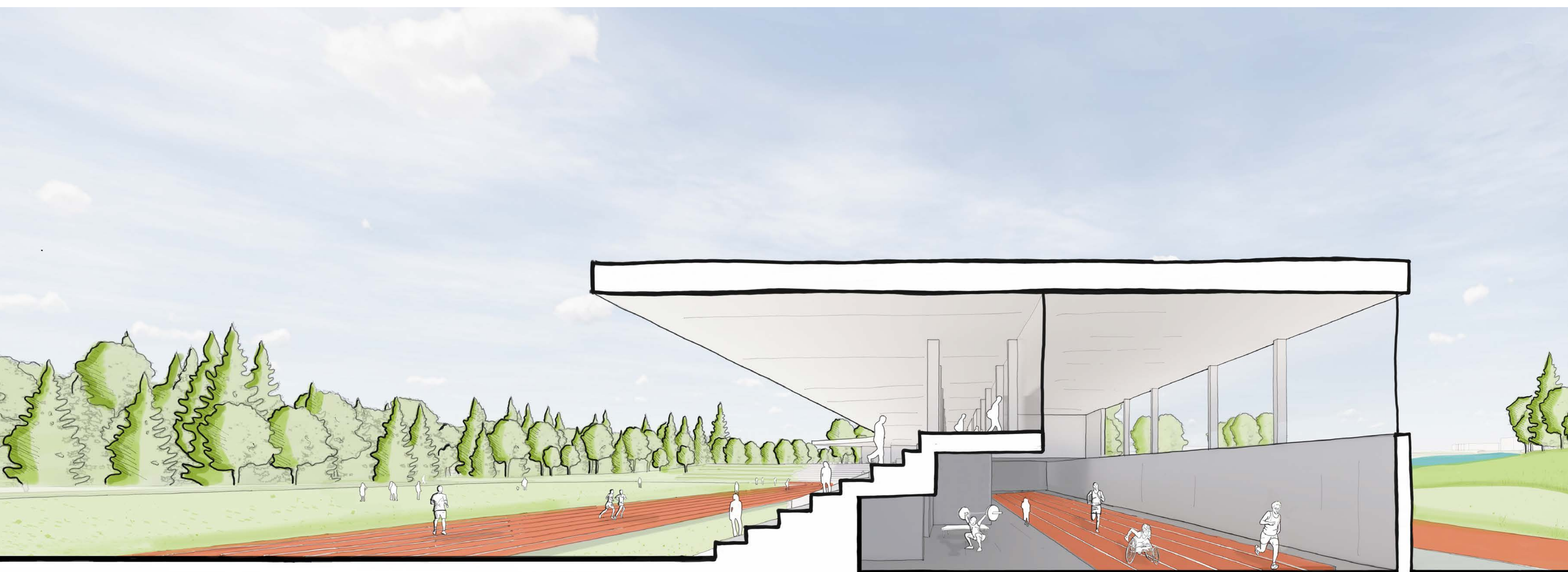
Team changerooms



DESTINATION SPORTS FACILITY FACILITY CONCEPT

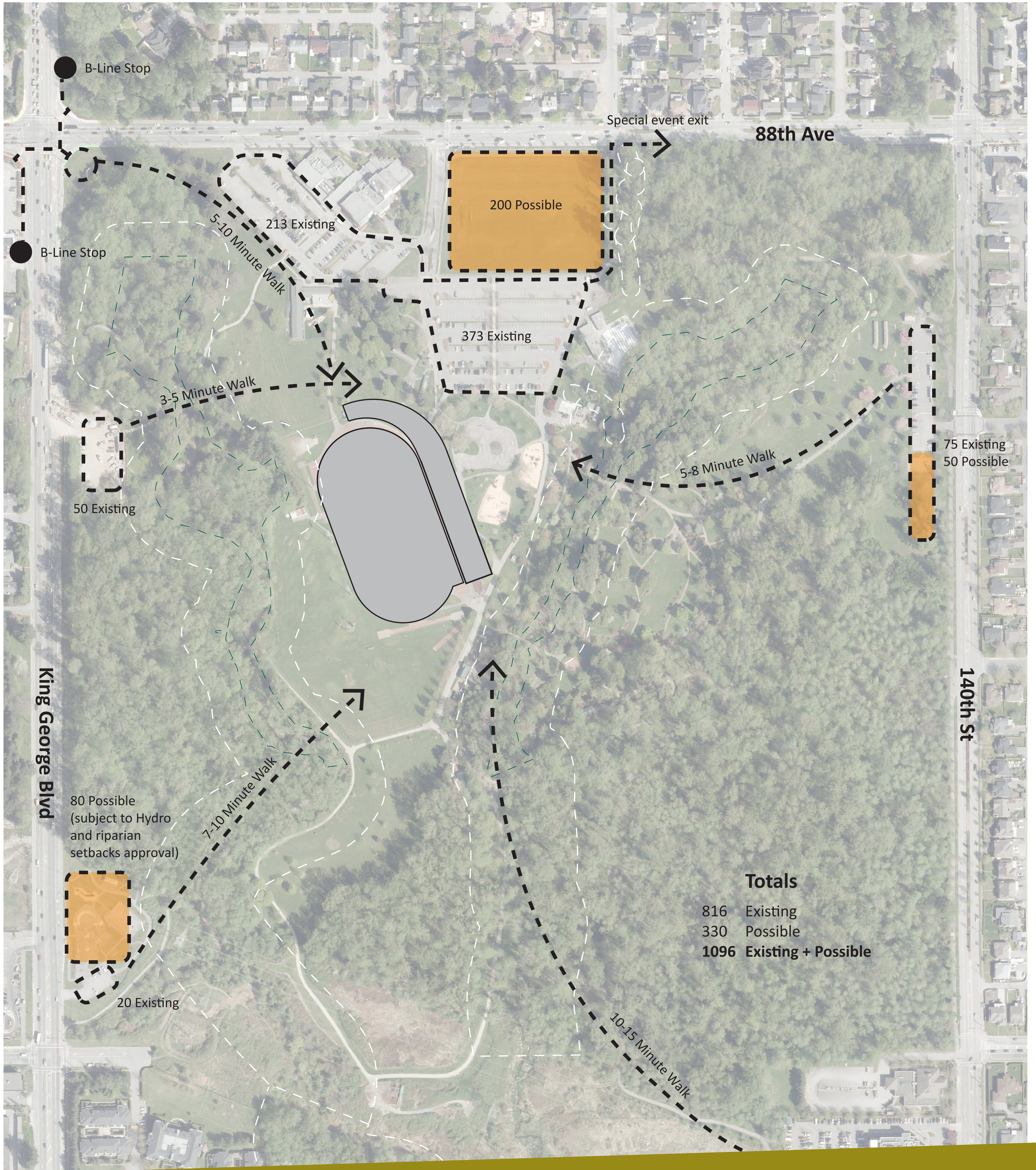


View from informal seating



Sectional perspective of grandstand and indoor track and field facilities

DESTINATION SPORTS FACILITY PARKING STUDY



DESTINATION SPORTS FACILITY

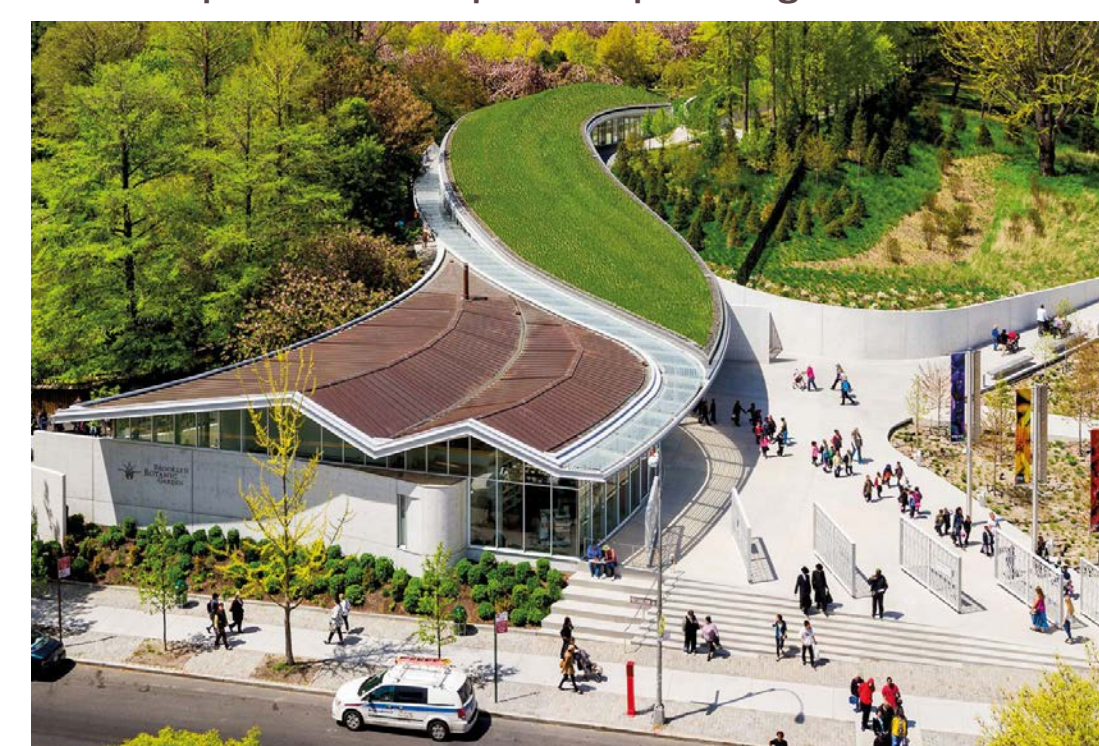
ENVIRONMENTAL INITIATIVES

Environmental initiatives in the project:

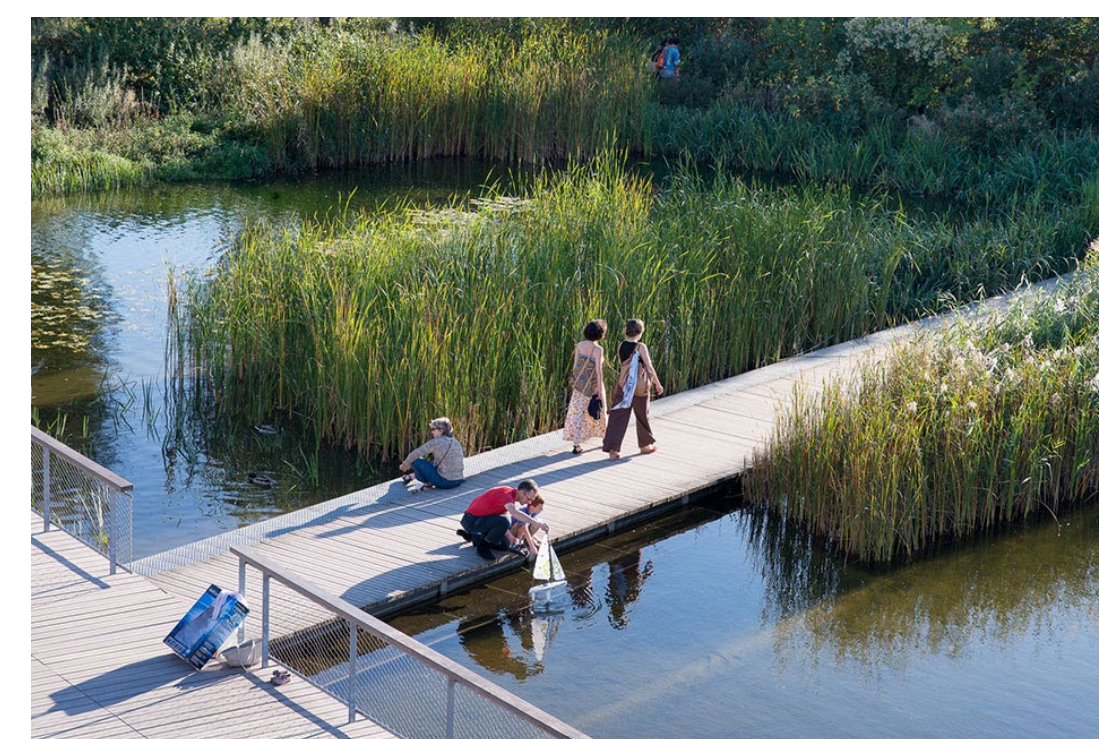
- + Improved stormwater management through a green roof, rain gardens, swales, Low Impact Development (LID) parking
- + Keeping track, lighting and stadium in current footprint, minimizing disturbance on other areas of the park
- + Restoration of stream corridor by converting grass areas back to stream habitat
- + Improve biodiversity of site with native and pollinator plants
- + Explore low carbon building solutions including advanced building designs, new construction methods, and efficient components
- + Improve efficiency of waterpark including grey water reuse



Low Impact Development parking



Green roof



Stormwater management



Rain garden

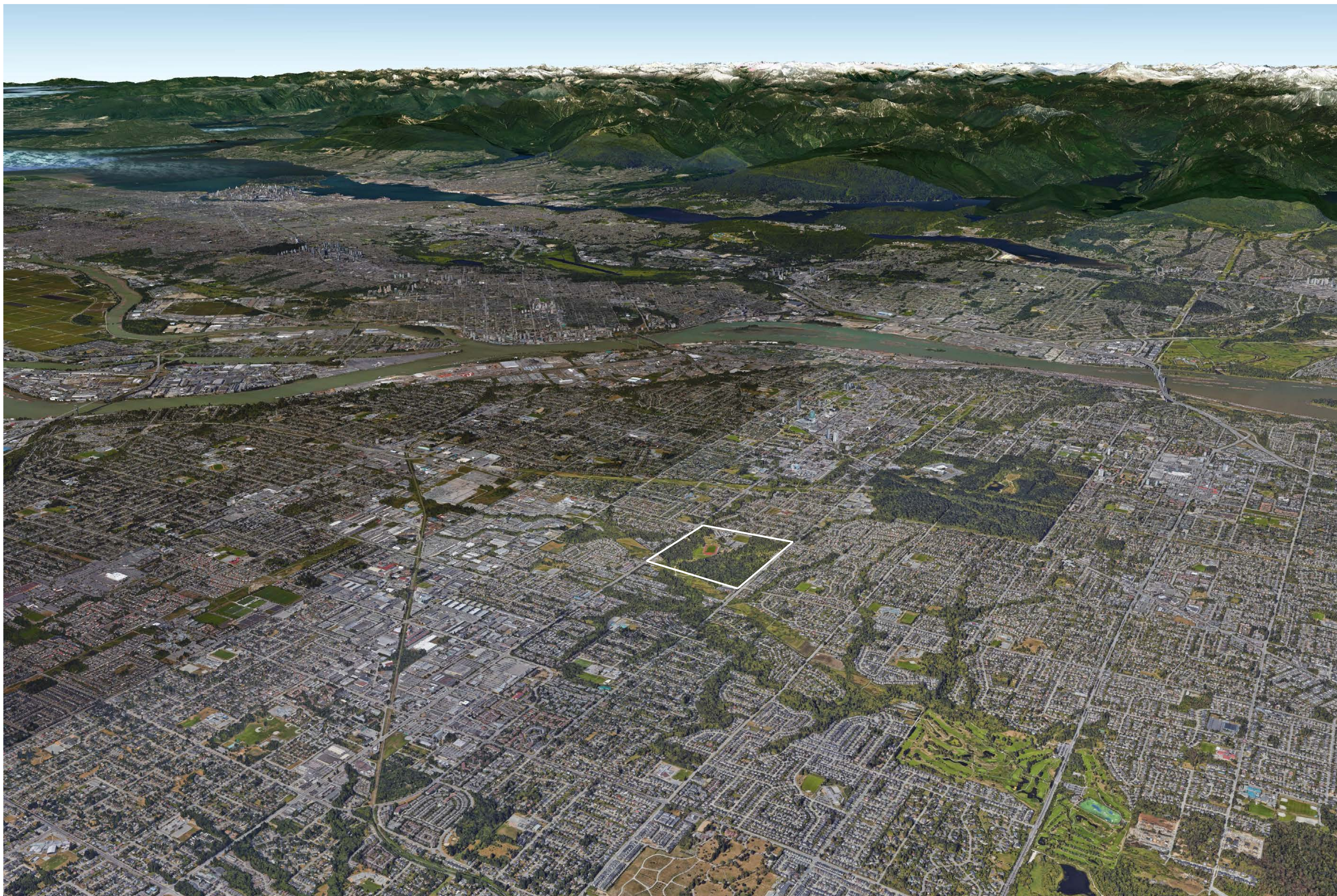


Pollinator plants

DESTINATION SPORTS FACILITY

SHARE YOUR THOUGHTS

Fill out the survey here or online at your own convenience.



ACCESS SURVEY ONLINE surrey.ca/newparks

FOR MORE INFO:

604.501.5050

surrey.ca/newparks / [#surreyparks](https://twitter.com/surreyparks) /  

