

Revised March 7, 2014

File: 0251-001

## UPDATED INFORMATION

TO: All Building Contractors / Owners

There has been considerable damage to City services (i.e., curbs, sidewalks and boulevard crossings) by construction works on private property over the past several years. We urge you to take the necessary steps to instruct your sub-trades to take more care when crossing or parking on curbs and sidewalks in order to reduce the risk of damage.

It may be necessary for you to protect the areas behind the curb and sidewalk to ensure equal support when equipment is entering the lot. Leaving driveways at gravel/sand stage and permitting traffic over curb or sidewalk will increase the chance of damage. Furthermore, placing gravel and other construction materials on the curb and/or sidewalk has proven to cause scarring of the concrete surface. The concrete will require replacement at the builder's cost. All reported / marked damage to City services must be repaired or replaced.

To do this or any work in City rights-of-way, a City Road & Right-of-Way Use Permit must be taken out at Engineering Counter Services. The Building Division will not grant Final Occupancy or release the damage deposit until these works have been accepted by the City.

### REMINDER:

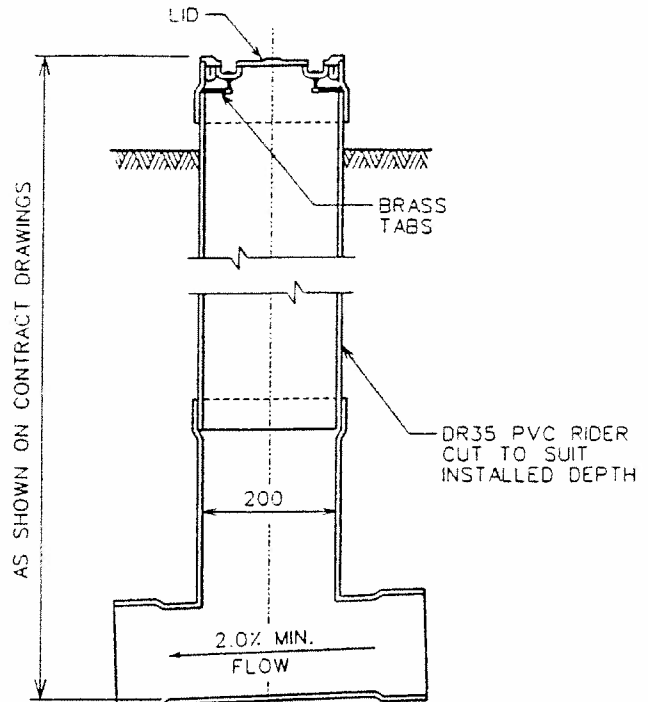
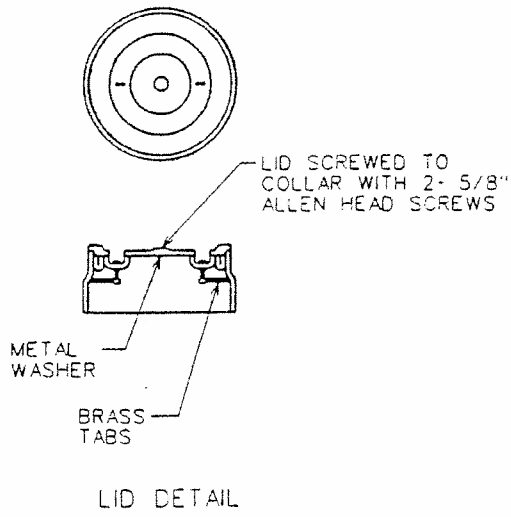
**The Building Contractor/Owner is responsible to:**

1. **Ensure that service connections within a driveway are protected with the appropriate, approved concrete pull boxes. This applies to the water meter and water curb stop shut-off as well as both the sanitary and storm inspection chambers. Refer to attached drawings SSD-D.18; S-9 and SSD.W.1, Note (4).**
2. **Ensure that the private, on-site driveway matches the location and width of an existing curb and sidewalk letdown on the City side.**
3. **Ensure that no materials of any kind are stored or stockpiled on the boulevards or roads.**

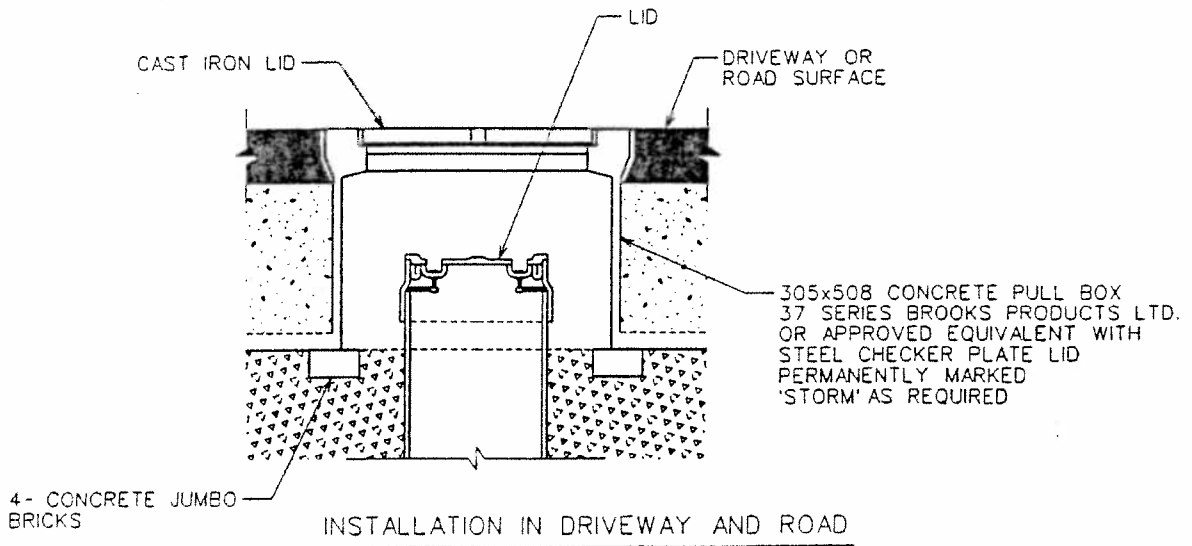


Doug Mossey, P.Eng.  
Inspection Services Manager


DVM/ha  
Attachments

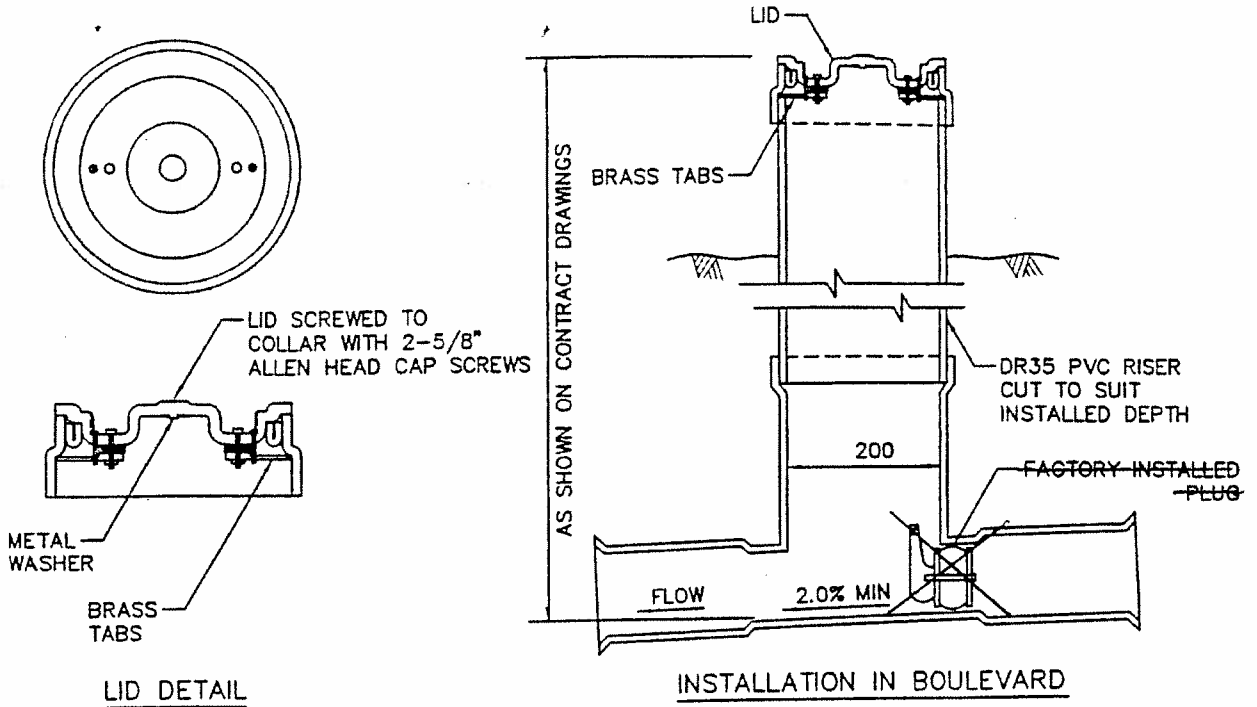


INSTALLATION IN BOULEVARD



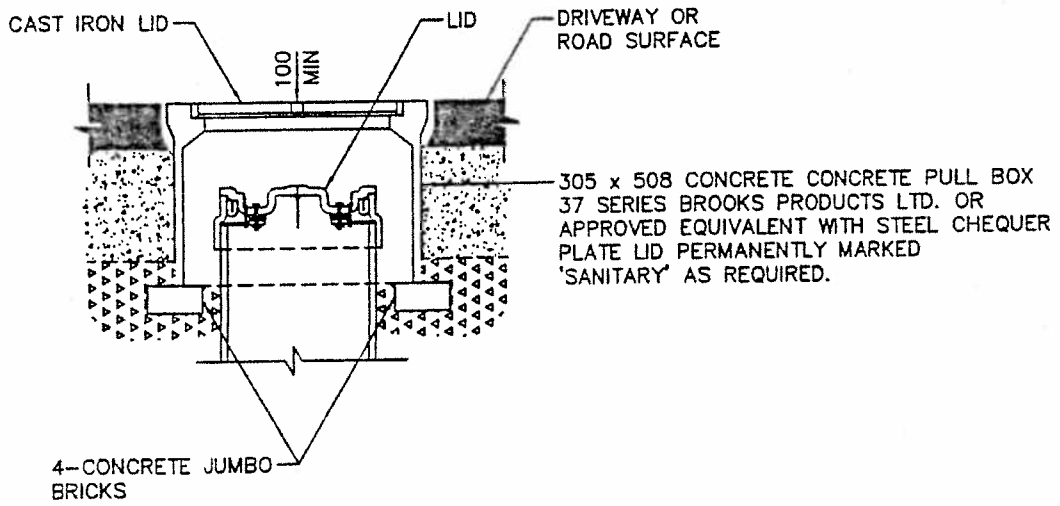
NOTE: 1) REFER TO DRAWING SSD-S7 FOR INSTALLATION REQUIREMENTS.  
 2) INSPECTION CHAMBER TO BE APPROVED MANUFACTURED FITTING.  
 3) REFER TO CONTRACT DRAWINGS FOR SITE SPECIFIC DIMENSIONS AND SECTION 02731 FOR DETAILED SPECIFICATIONS.

3		All Dimensions Shown In Millimetres, Unless Otherwise Noted	
2			
1			
	Revision Date	Approved	Title INSPECTION CHAMBER FOR 100 TO 200 STORM SEWER CONNECTION
 <b>SURREY</b> CITY OF PARKS		SUPPLEMENTARY STANDARD DRAWINGS	Approved
			Date July 1999
			Drawn By Surrey Engineering
			DRAWING NUMBER <b>SSD-D.18</b>



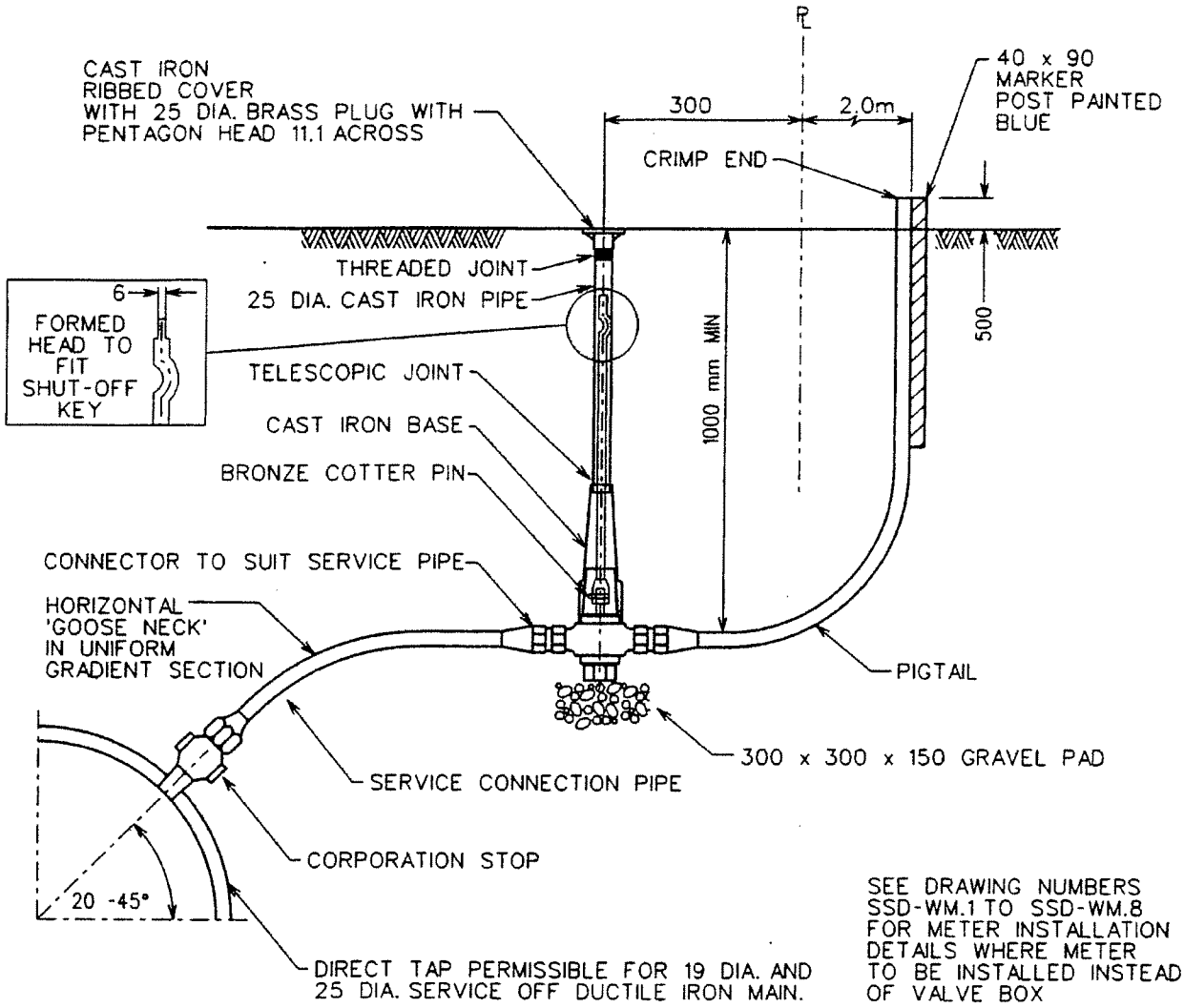
LID DETAIL

INSTALLATION IN BOULEVARD



INSTALLATION IN DRIVEWAY AND ROAD

- NOTE:
1. REFER TO DRAWING S7 FOR INSTALLATION REQUIREMENTS.
  2. INSPECTION CHAMBER TO BE APPROVED MANUFACTURED FITTING.
  3. REFER TO CONTRACT DRAWINGS FOR SITE SPECIFIC DIMENSIONS AND SECTION 02731 FOR DETAILED SPECIFICATIONS.



SEE DRAWING NUMBERS  
SSD-WM.1 TO SSD-WM.8  
FOR METER INSTALLATION  
DETAILS WHERE METER  
TO BE INSTALLED INSTEAD  
OF VALVE BOX

DOUBLE STRAP SADDLE REQUIRED FOR  
SERVICES OFF DUCTILE IRON MAIN GREATER  
THAN 25 DIA.

- NOTES: (1) THIS DETAIL FOR SERVICES 19mm TO 50mm ONLY.  
 (2) PVC SADDLES TO MMCD SECTION 02666.  
 (3) INSTALL SERVICE PIPE WITH 'GOOSE NECK' IN HORIZONTAL POSITION.  
 (4) WHEN CURB STOP INSTALLED IN DRIVEWAY PLACE COVER IN CHAMBER.  
 MARK 'WATER' SEE MMCD DRAWING S9 FOR TYPICAL DETAIL.  
 (5) REFER TO CONTRACT DRAWINGS AND MMCD SECTION 02666 FOR DETAILED SPECIFICATIONS.  
 (6) OPERATING ROD DIAMETERS - 14mm FOR 25mm OR SMALLER CURB STOPS  
 - 19mm FOR 32mm TO 50mm CURB STOPS

3	DECEMBER 2003	
2	OCTOBER 2002	LISA OLIVIER
1	JULY 2002	
	Revision Date	Approved

All Dimensions Shown In Millimetres,  
Unless Otherwise Noted

Title  
WATER SERVICE CONNECTION



Approved	
Date	FEBRUARY 2002
Drawn By	Surrey Engineering

DRAWING NUMBER  
SSD-W.1