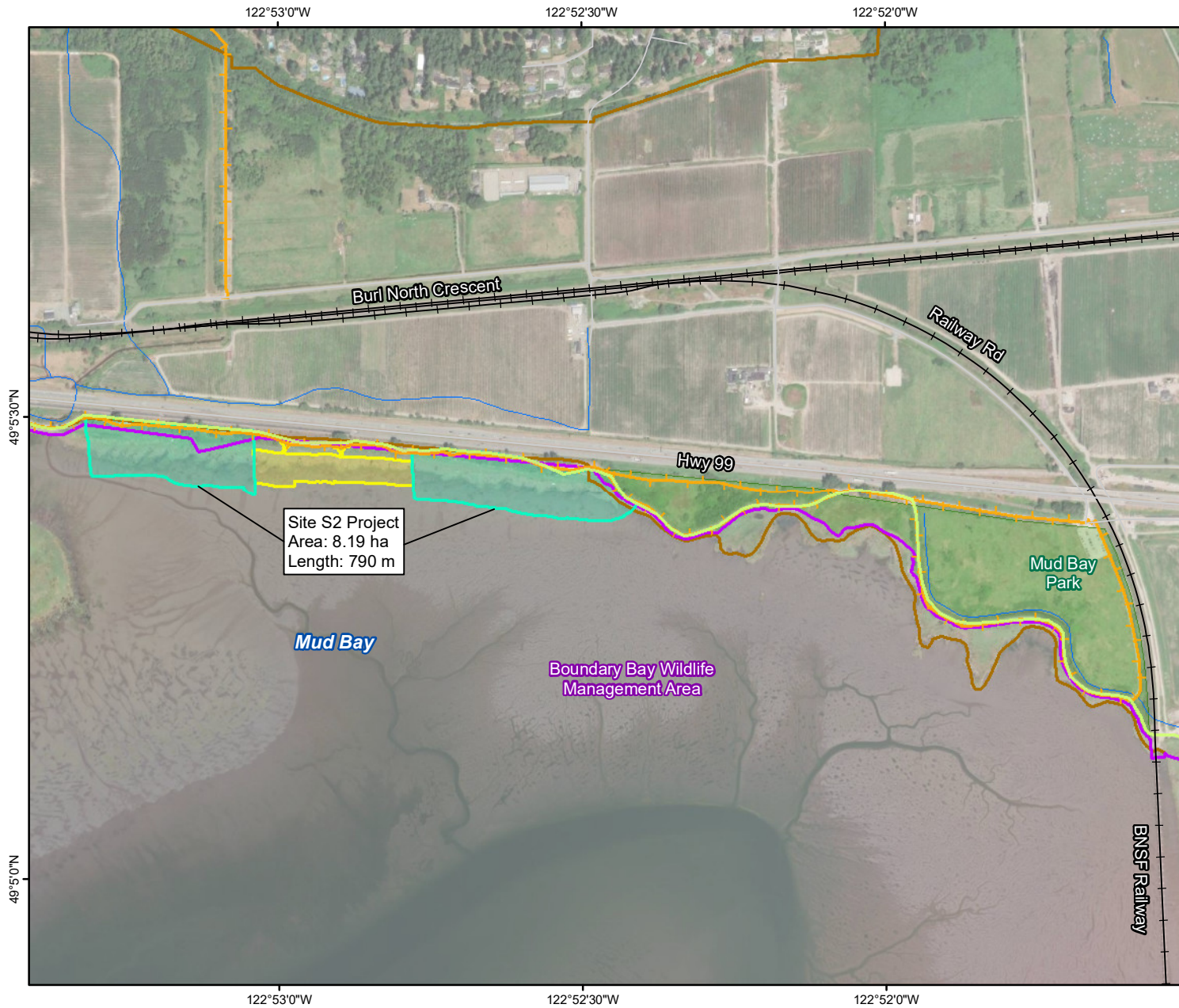


Figure 2 Mud Bay Nature-Based Foreshore Enhancements Full-Scale Project, Site S2.



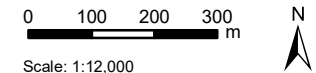
Legend

- Existing Colebrook Dyke
- Recreational Trail
- S1 Pilot Site
- Site S2 (the Project)
- Wildlife Management Area (WMA)
- Agricultural Land Reserve

Base Features

- Watercourse
- Road
- Railway
- Parks

National Topographic System (NTS) map number: 092G02



Scale: 1:12,000

Projection: NAD 1983 UTM Zone 10N

Data Sources:

- a) S2 site, created by Hatfield using buffers around KWL site data 2022.
- b) S1 pilot site, KWL 2022.
- c) Hydrography, Fresh Water Atlas 2011.
- d) Roads, park, dyke, and trails, City of Surrey 2020-2022.
- e) Wildlife Management Area, FLNRO 2020.
- f) Aerial Imagery 10cm, 15 January, 2017, Esri Online Service.

