

Welcome!



Help Make **FRASER VIEW PARK** A Better Place For People and Dogs



This open house focuses on the first stage of planning and design of a dog off-leash area at Fraser View Park. Please share your ideas and comments to help shape the design of the park.

1

Sign in at the front desk

2

Take a comment form and view the displays

We encourage you to provide your ideas and input by completing the form.

3

Place a coloured dot on the map to indicate where you live

If you live outside the map area, place your dot in the adjacent white space

4

Place coloured dots on the dog amenities you'd like to see

Using your 3 dots provided, vote on your top 3 amenities you'd like the dog off-leash area to include

Staff are available to provide you with information and answer your questions.



Context

Show Us Where You Live



Place a coloured dot on the map to indicate where you live. If you live outside the map area, place your dot in the adjacent white space.



Project Description

Overview



 Park Boundary  Forested Area  Passive Open Grass

Overview

Fraser View Park is an existing 6 hectare (16 acre) park in Fraser Heights with approximately 1.5 hectares (3.7 acres) of open space. The park contains a mixture of open grass and forested area and is heavily forested along the steep slope to the north of the park. Other than passive open grass, there are no amenities in Fraser View Park.

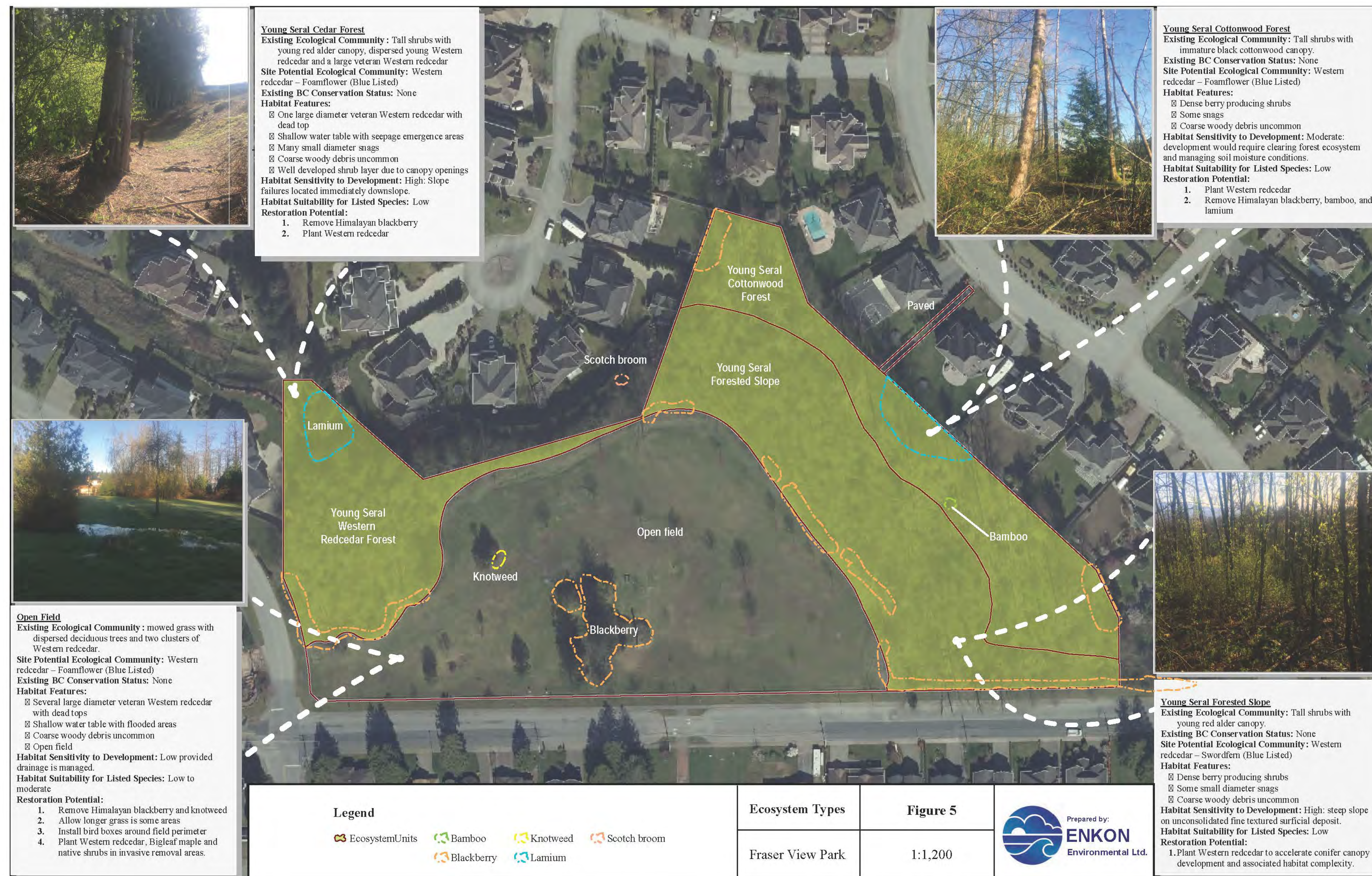
The City has money to build a dog off-leash area in Fraser Heights and has identified Fraser View Park as the ideal location.

Challenges & Opportunities

- 1 Parking** - Currently no available street parking adjacent to Fraser View Park.
 - As part of the project, the north side of 112th Ave can be opened for parking.
- 2 Drainage** - Soils in the open field are poorly drained and remain saturated during winter.
 - As part of the project, work will be completed to improve drainage in the park.
- 3 Invasive Species** - Edges of forested area and centre grove dominated by invasive species.
 - As part of the project, invasive species will be removed and natural areas restored with native species.
- 4 Size of Dog off-leash area** - Recommended minimum size of dog off-leash area is 1 acre.
 - Upgrades outside of the dog off-leash area will be included in the project.



Environmental Context



Varied Forest Types

The forest canopy is a mix of coniferous and deciduous trees, mostly red cedar, maple and red alder. There is a diversity of forest and ecosystem types, each providing unique environmental conditions which add to the ecological value of the park. Three cedars in the centre cluster of trees have thinning or dead crowns but are non-hazardous and are recommended for retention.

Drainage

Soils in the open field are poorly drained and remain saturated during the winter months. The Environmental Report recommends locating the dog off-leash area on the eastern portion of the site where soils are seasonally drier.

Invasive Species

The edges of the forested area and the cluster of trees in the centre of the park are heavily dominated by invasive species, including *Himalayan Blackberry* and *Knotweed*.

Habitat Restoration

Recommendations for restoration include:

- allowing grass to grow longer in some areas
- installing nest boxes at perimeter of open field
- removing invasive species
- planting big leaf maple, red cedar and other native species







Dogs in Surrey

Dog Off-Leash Area Strategy







Concept plan for Fraser View Park (Dog Off-Leash Area Strategy)

Benefits of Off-leash Areas

-  Providing space for dogs to socialize & exercise
-  Promoting responsible dog ownership
-  Building community by providing space to socialize
-  Discouraging conflict

Design Guidelines

-  **Park Amenities**
Number and type of amenities weighted based on classification of off-leash area
-  **Fencing**
Use fencing to enclose off-leash area and to separate large dog and small dog areas
-  **Environmental Design**
Using varied terrain, retaining and protecting existing trees, and providing vegetated areas for shade and screening
-  **Signage**
Signage to identify off-leash area and to promote communication and education among dog owners



Thank You

For Sharing Your Ideas

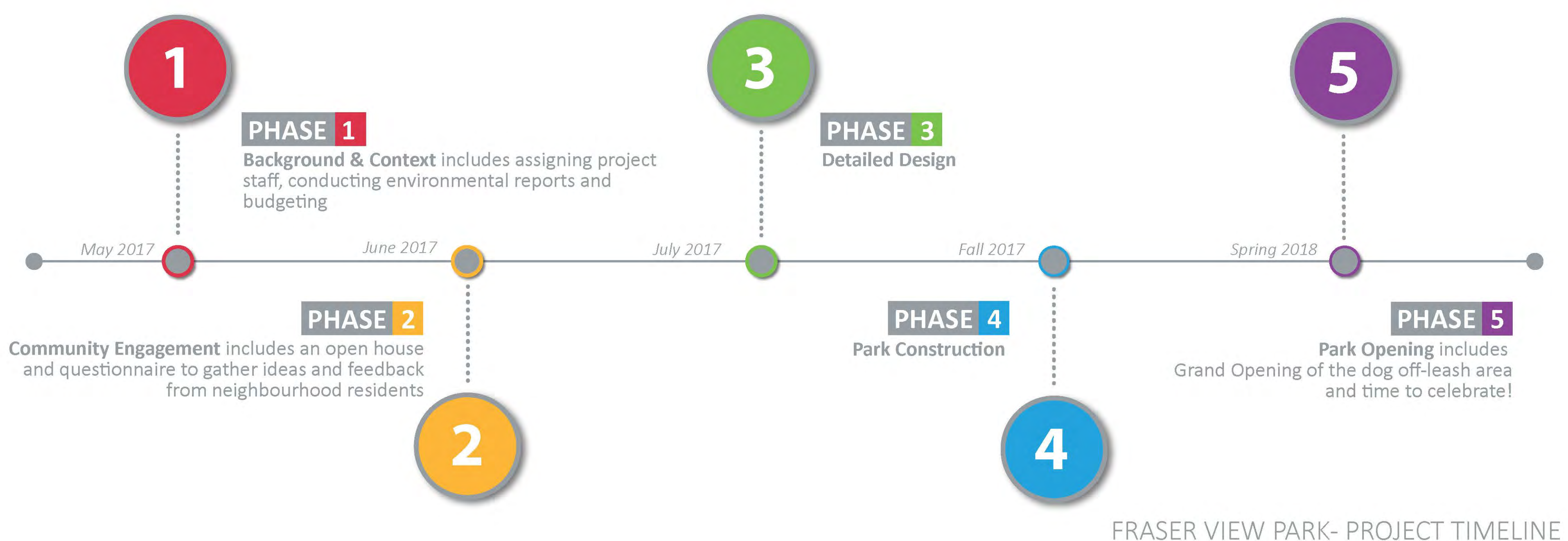


What's Next?

Following this Open House, staff will review feedback and ideas generated to determine the demand for a dog off-leash area at Fraser View Park. A summary of ideas and feedback gathered will be posted on the City's website in June (www.surrey.ca/newparks)

If the dog off-leash area idea is supported, staff will begin detailed design with a scheduled completion date for Spring 2018.

Project Timeline (subject to plan approval)



How Do I Stay Involved?

- ✓ Visit the project website at: www.surrey.ca/newparks
- ✓ Email Doug Merry, Parks Planner at: djmerry@surrey.ca
- ✓ Call 604.501.5050
- ✓ Voice your opinion by completing the provided questionnaire or online at www.surrey.ca/newparks

Stay tuned and visit www.surrey.ca/newparks for updates along the way

