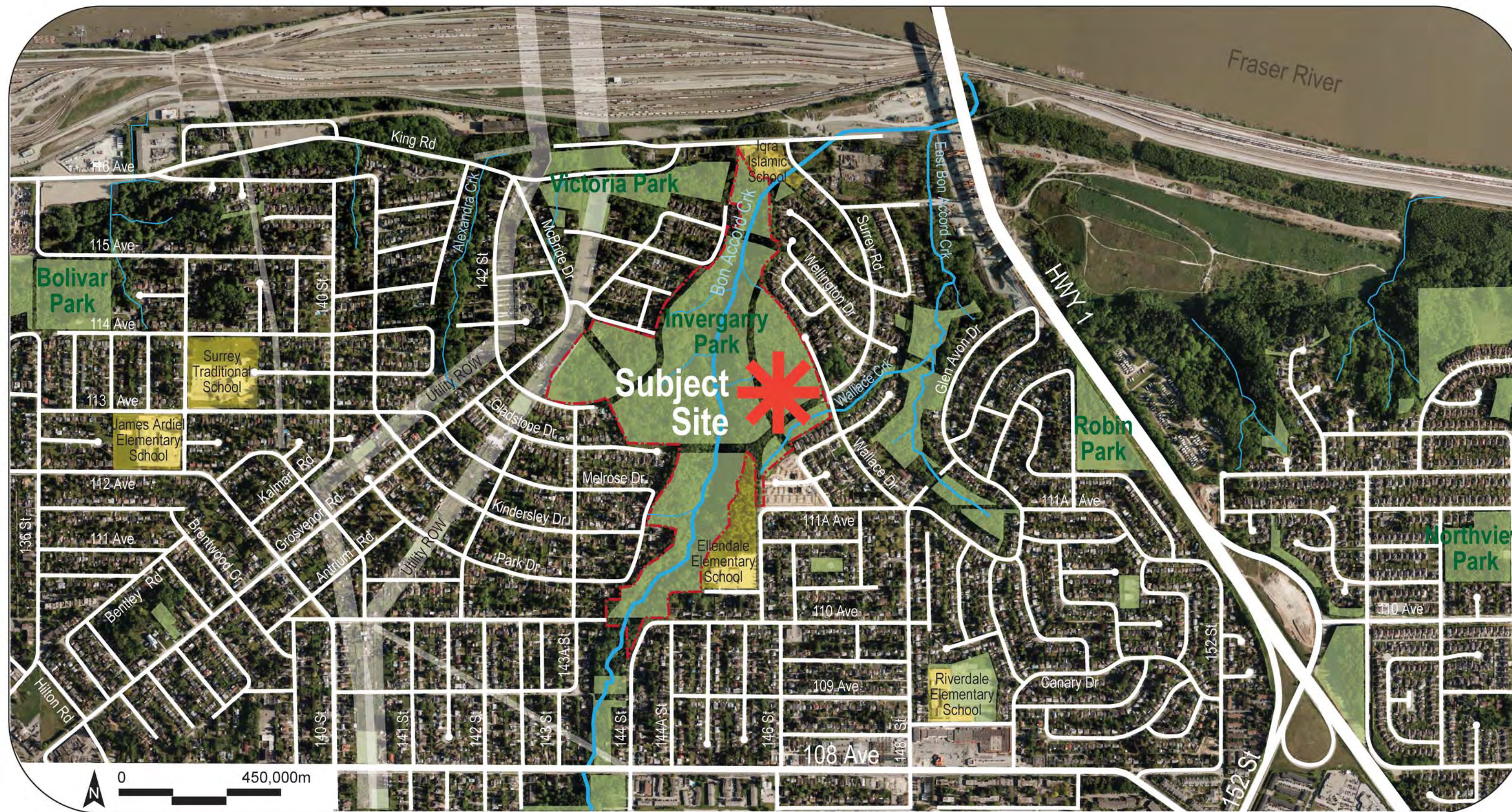


Welcome to the Invergarry Bike Park Open House

We are here to present a draft concept plan for the east side of Invergarry Park which includes bike facilities, natural area management, and walking trails.



Context Plan

LEGEND

- Invergarry Park Boundary
- Watercourses
- Park
- School

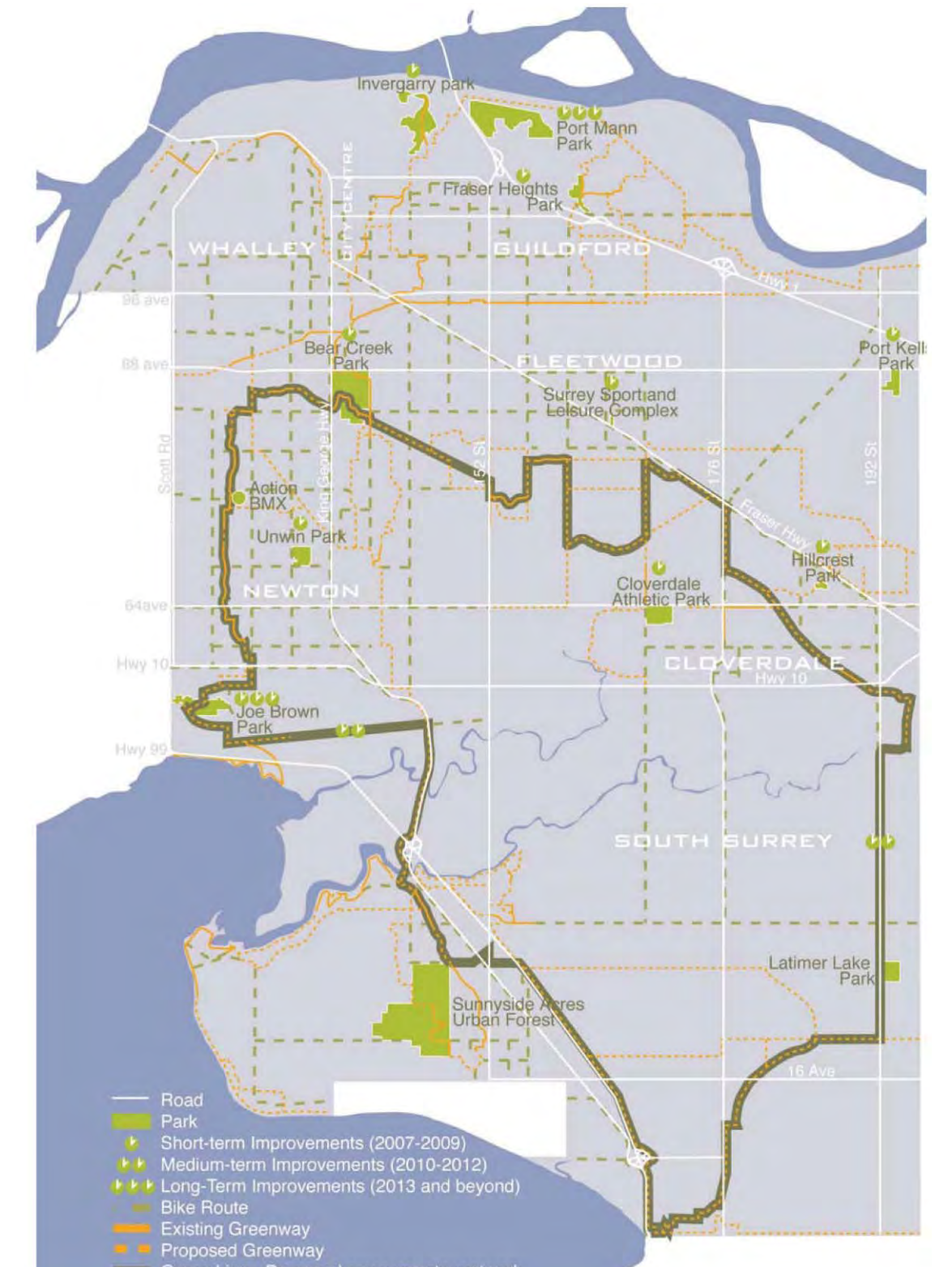
Aerial Photo: May 2010
Printed: April 2011

Why Bike Facilities in this park?

The City of Surrey is experiencing growing demands for non-traditional bicycle recreation, including off-road mountain biking and BMX riding. With few formal facilities in our city, the riding community has developed informal or "rogue" facilities throughout Surrey's parks. To help better manage this growing sport and reduce the number of informal facilities in Surrey, the **Bicycle Recreation Facilities Strategy** was developed in 2007 to provide guidelines for the provision of new facilities, the upgrade of existing non-traditional facilities, and the maintenance and operating requirements of these facilities for the future. Through research, surveys, and public involvement, a number of bike facility sites were chosen for improvements, including Invergarry Park.



Bike Facility Service Areas



Bike Facility Strategy

As part of the Bike Strategy, a preliminary bike facility concept plan was prepared for Invergarry Park, and included a free-ride area, small skills park, and dirt jumps. More recent meetings with community bike park users have determined that there is less of a desire for a trials/skills area in this park, and more of a desire for...

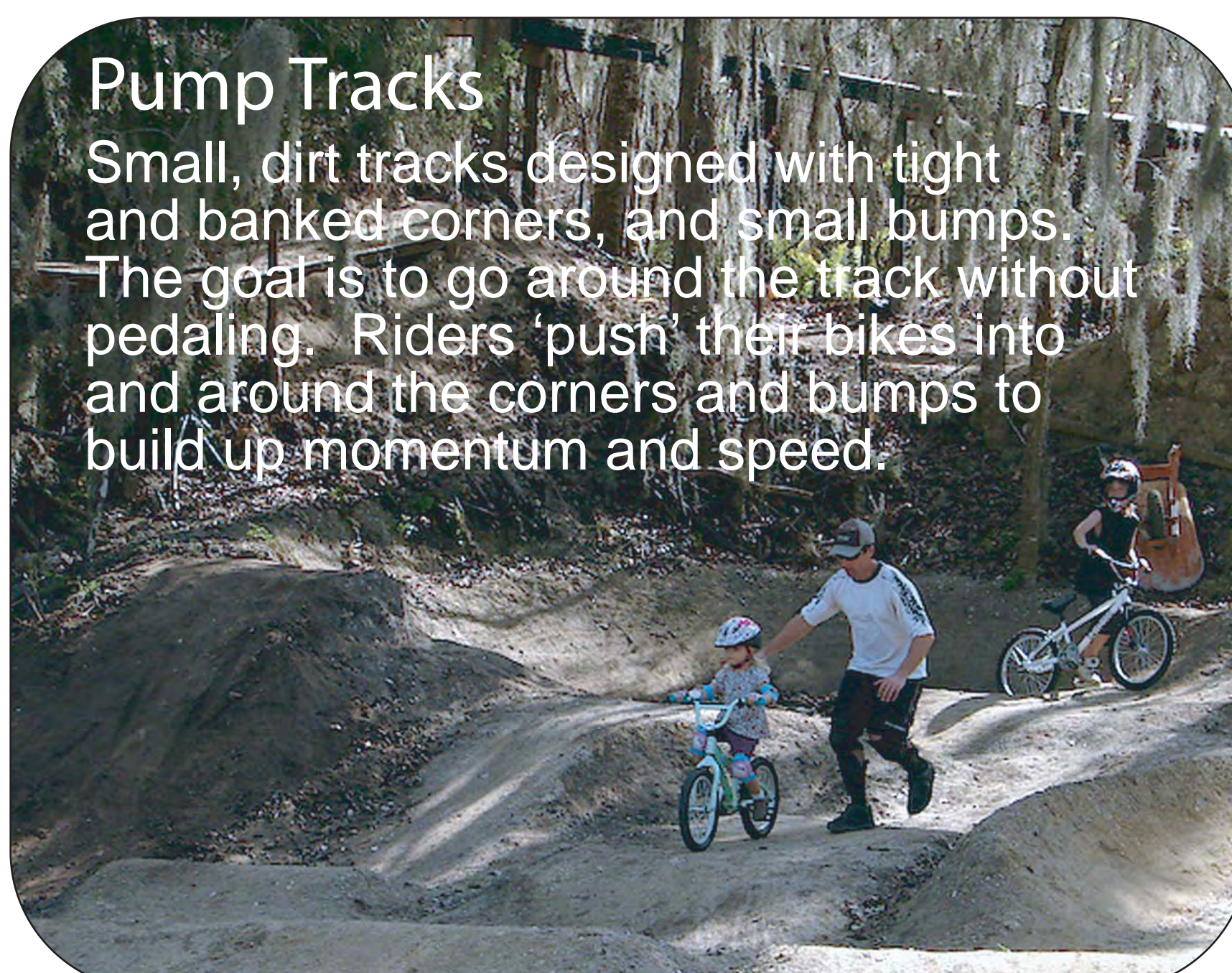
Dirt Jumps



Launching a bike over large, man-made dirt jumps, attempting aerial tricks in the process

Pump Tracks

Small, dirt tracks designed with tight and banked corners, and small bumps. The goal is to go around the track without pedaling. Riders 'push' their bikes into and around the corners and bumps to build up momentum and speed.



Downhill Trail Riding

Riding down steep and technical gradients on a one way trail. In free-riding, trails may include a variety of obstacles and jumps which are creatively navigated.



Invergarry Park Background and Research

Invergarry Park is a **City-level** park, which means it will support destination park facilities for Surrey, and is a good location for a bike park.

As a natural area park, an **Environmental Assessment** was completed to determine if the site is suitable for active recreation facilities, such as a bike park.

A **Survey** was undertaken for the subject site to map existing trails, watercourses, significant trees, bike jumps, and topography. Wherever possible, the new concept plan uses these existing features to **minimize disturbance** to the natural area.

Bon Accord Creek is a **“Class A” (fish bearing) watercourse**. A riparian setback is required to **protect the integrity of the stream** so as not to result in harmful alteration, disruption, or destruction of fish habitat.

Bon Accord Creek is located at the bottom of a steep ravine. A **15m top of bank setback** will ensure the future stability of the ravine and prevent erosion and slope failure.

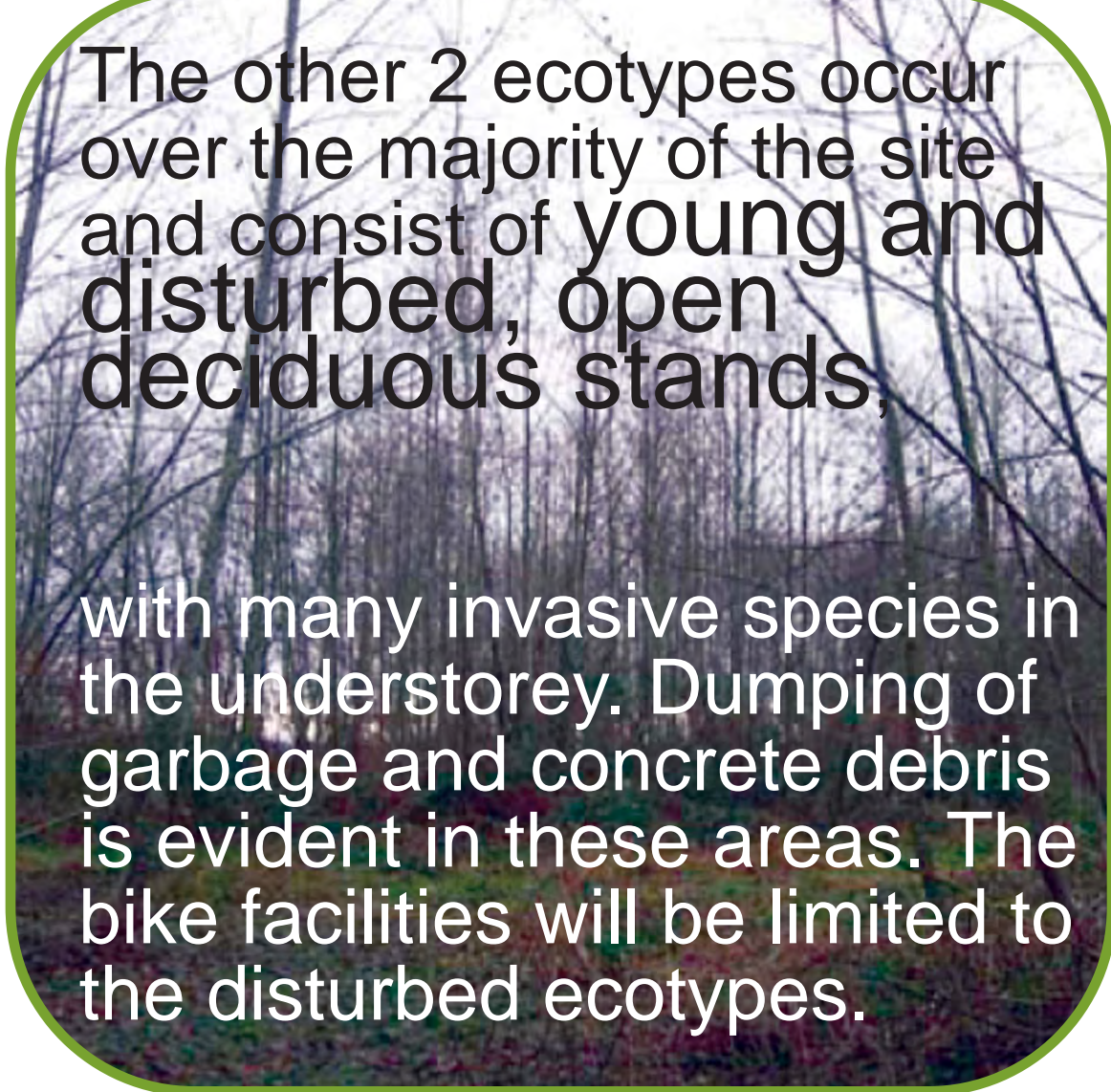
Wallace Creek is a **“Class B” (provides food and nutrients to downstream fish habitats) watercourse** and will be protected with a 15m setback.

Existing trails currently support conflicting uses. The concept plan creates **separate walking and biking trails**.

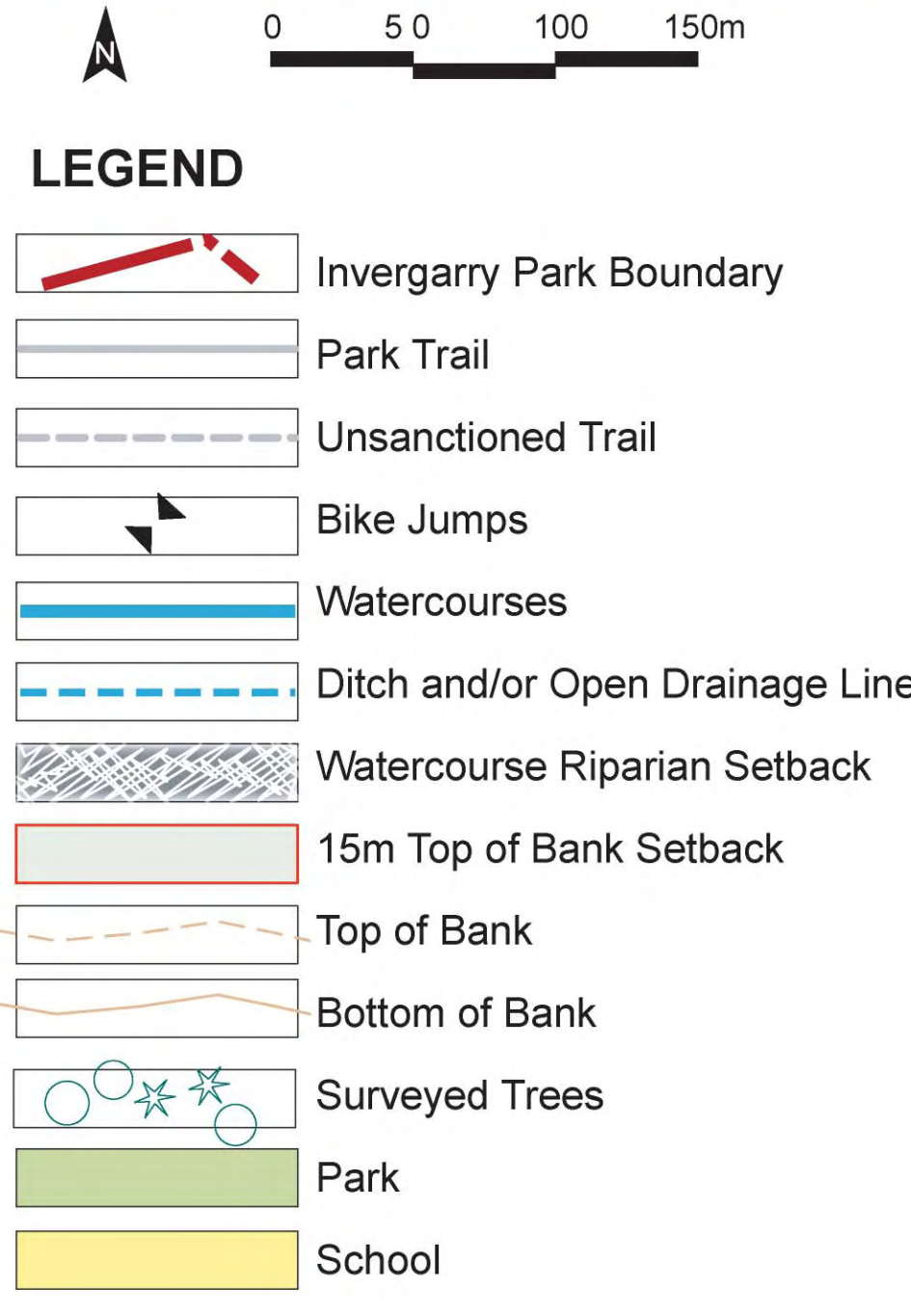
Unsanctioned trails within the riparian and 15m setbacks will be **decommissioned** where possible and the setback area **restored**. Remaining trails within the setbacks will be carefully monitored and maintained to ensure they do not cause detrimental impacts to the stream and slope.

Invergarry Park supports a variety of wildlife including **birds, amphibians, reptiles, and mammals**, such as the Black-Tailed Deer.

4 ecotypes have been identified in the subject site:



Existing Conditions



Aerial Photo: May 2010
Printed: April 2011

Invergarry Bike Park Concept and Staging Plan

The proposed park improvements will be completed in 2 stages.

DRAFT
for discussion purposes



Concept Plan

0 15 30 45m

LEGEND

- Invergarry Park Boundary
- Walking Trail
- Bike Trail
- Bike Jumps
- Fence/Natural Barrier (Stage 1)
- Watercourse
- Ditch and/or Open Drainage Line
- Watercourse Riparian Setback
- 15m Top of Bank Setback
- Top of Bank
- Bottom of Bank
- 1m Contours
- Natural Area
- Existing Trees
- Proposed Specimen Trees

Aerial Photo: May 2010
Printed: April 2011