



**presents**

# CASCADIA

a juried exhibition of  
West Coast Flora and Fauna

August 23 – November 16, 2014

organized by the Arts Council of Surrey and  
presented with the assistance of the



## **President's Perspective**

Cascadia is a juried exhibition with art works of painting, collage, printmaking and photography. The competition invited artists to consider contemporary issues by representing the particular environment of the Pacific Northwest. This exhibition is presented in conjunction with the fall exhibition Flora and Fauna: 400 Years of Artists Inspired by Nature from the National Gallery of Canada.

The display of art work is fascinating, lovely and sometimes disturbing. The range of styles is amazing. You will find graphite, mixed media, pastel, oil, watercolour and photography. Visual artists excelled in showing how they see the natural world around them.

I want to thank all the artists who entered with vision and desire to express themselves through their work produced so many outstanding pieces of art for consideration. Congratulations to all the artists whose works are in the show.

We extend heartfelt thanks to the jurors' for this competition. The Cascadia jurors were Elizabeth Barnes, Kwantlen Polytechnic University Fine Art; Jordan Strom, Curator, Surrey Art Gallery; and Pamela Yokome, Dart's Hill Garden. We appreciate their commitment to excellence in adjudicating this special art event.

Our appreciation goes to the staff at the Surrey Art Gallery for their continued support, and to the volunteer committee members Leah McCullough, Kay Vandeventer, Brian Foreman and Jennifer Wyatt.

Carol Girardi,  
President, Arts Council of Surrey

---

The Arts Council of Surrey has been working on behalf of the arts community for more than forty years and each year continues to expand its scope of service and influence. It exists to create awareness, appreciation and pride in the artistic and cultural achievements of our community. The Arts Council is a registered non-profit organization under the direction of a voluntary Board and a part-time executive director appointed in 2006.

As part of our community outreach program, the ACS often seeks partnership with other entities such as the Surrey Arts Centre, City Tourism, the School Board, Board of Trade, and sponsors from the business sector.

### 1<sup>st</sup> Place

**Narissa Ng**

#### *Faith – Hope – Love*

*I see in you a thousand images,  
Your loveliness expressed.  
There exist no words to describe,  
How my soul catches sight of you.*

*I see in you a thousand images,  
Your power and strength expressed.  
Eternity is what you show,  
As you reveal the glory of our Lord.*



### 2<sup>nd</sup> Place

**Tracie Stewart**

#### *Pathways of the Past - Newton from the Top*

Artist's Statement: You are up in the top of a canopy. The sun filters thru the foliage of the big leaf maple and the strong breeze catches the edge of the leaves exposing the undersides. The spongy, drippy moss plays host to the liquorice fern; a place for connecting ecosystems and contemplation. This is what you'd find on a B.C. Hydro Substation Topographical map of Newton from 1967. The Top of a Canopy.



### 3<sup>rd</sup> Place

**Lesley Tannen**

#### *Damn Tree*

Artist's Statement: This 100 foot beauty was one of 7 mature firs taken out by a neighbour in White Rock. He had been warned that if he waited too long a new bylaw might make it a much more expensive project. Ha! Damn Tree.



### **Honourable Mention**

**Barry Makela**

#### ***One Leaf***

This work is part of an ongoing series exploring the many shapes and colours of the maple leaf. It is crafted from paper then painted and embossed to create a realistic texture.

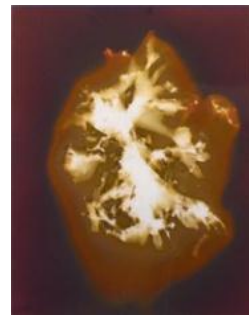


### **Honourable Mention**

**Phyllis Schwartz**

#### ***Midsummer Spanish Banks Impression 1* (July 15 2014)**

Artist's Statement: MidSummer Spanish Banks Impression1 is a Lumen Print, which is a hybrid print made by a contact printing process that leaves traces and shadows on photosensitive surfaces. Plant enzymes and atmospheric conditions also interact with the surface to produce unexpected results on the surface of the paper or sheet film, leaving x-ray like marks of both their shapes and interiors. These impressions of the westcoast plant life hover on the cusp of abstract imagery and poetry.



### **Honourable Mention**

**Elizabeth Topham**

#### ***Rubus armeniacus, study #3***

Artist's Statement: This painting explores my continued curiosity with our relationship to the Himalayan Blackberry\*. Introduced to North America in 1885 for the cultivation of its succulent black fruit, it quickly became naturalized and is currently listed as an invasive species. The wild becomes cultivated, the cultivated becomes wild.

\* *Rubus armeniacus*, *R. procerus*, *R. discolor*



Mary Frances Batut	<i>Skimming Across the Surface of Life</i>	acrylic	6350
Lynn Budny	<i>Bowen 2 - Arbutus</i>	oil on canvas	425
Elizabeth Carefoot	<i>Sea Form (Kamish Bay)</i>	acrylic	400
Krystle Coughlin	<i>Dogwood</i>	acrylic	250
John Cranswick	<i>Reflections/Great Blue Heron</i>	acrylic	1000
Katherine Garratt	<i>The Trumpet Flower Calls to the Hummingbird</i>	acrylic and clay on canvas	3000
Tammas Grogan	<i>Fritillaria affinis in French Blue I</i>	linocut print collage	400
Reet Herder	<i>Ducking for Lunch</i>	oil	200
Linda Johner	<i>Summer Butterfly</i>		95
David Kilpatrick	<i>Shadow Walker</i>	acrylic	1800
Melanie Lastoria	<i>Beauty and the Beast</i>	photo	120
Kyung Hee Lee	<i>Field of Feels</i>	oriental colour paint on rice paper	NFS
Barry Makela	<i>One Leaf</i>	mixed media	NFS
Liane McLaren Varnam	<i>The Signal Fish: Wild</i>	mixed media	390
Sheron Meyer	<i>Dragonfly Etudes II</i>	acrylic	1200
Leah Murray	<i>As Above So Below</i>	digital photo imaging	190
Nerrisa Ng	<i>Faith-Hope-Love</i>	charcoal	3500
Kathryn O'Regan	<i>Through the Blowhole I</i>	photo on aluminum	1000
Denise Paluck	<i>Digitalis Purpurea - Common Foxglove</i>	scratchboard & ink	NFS

Melissa Peacock	<i>Wild</i>	watercolour, charcoal, acrylic	250
Leah Philcox	<i>Mermaid Money</i>	mixed media	80
Deborah Putman	<i>Totem: Coyote's Glance</i>	acrylic & wasp nest	2500
Deb Reny	<i>Modernity</i>	digital	400
Roland Rihela	<i>Swan Red and White at Twilight</i>	photo	195
John Russell	<i>Erythronium II</i>	photo	200
Phyllis Schwartz	<i>Midsummer Spanish Banks Impression 1 (July 15 2014)</i>	lumen print on fibre	400
Silke Spodzieja	<i>Ode to Qualicum</i>	acrylic	750
Gail Stephan	<i>Here's Looking at You, Heron, Stanley Park, Vancouver</i>	photo	100
Tracie Stewart	<i>Pathways of the Past - Newton from the Top</i>	graphite & acrylic on Velum	1400
Paul Stilwell	<i>Stump Culture</i>	oil	400
Deborah Strong	<i>Where the Forest Meets the Shore (Northwestern Crows)</i>	hand painted silk	1100
Lynn Sykes	<i>Rhodonendron</i>	oil on canvas	850
Lesley Tannen	<i>Damn Tree</i>	pastel	180
Elizabeth Topham	<i>Rubus armeniacus, study #3</i>	oil	4900
Kameko Walker	<i>Surprise Landing</i>	photo	325
Jeff Wilson	<i>Skagit Valley</i>	acrylic	2400

If you are interested in purchasing a work from this exhibition please contact the Arts Council of Surrey at 604.594.2700.

## **Jurors' Statement**

Cascadia is the name given to the bioregion that extends up and down the coastline of North America's northwest, from southern Alaska to Northern California, between the Coast Mountains and the Pacific Ocean. This juried exhibition presents a set of artworks that responds to its biological diversity and ecology. As with the flora and fauna of this expansive region, the artworks are diverse, and they benefit from this varied nature. While a painting of a flowering plant may make a powerful statement on its own, its proximity to a large assortment of other works such as a photograph of an insect or a collage of a flock of birds, makes for a far stronger more evocative environment.

The images are also lush like our climate. The rainy, wet winters, sunny summers and cool autumns of our Pacific temperate rain forest produce a soft rich array of colours and textures. The choices made by the artists—whether it is a particular choice of materials or the method of applying the paint—reflect the rich variety and types of surfaces and textures found in the region.

Artworks range from representations of the unique regional species of plant and animal life, the human impact on the environment or celebrate the wonders of nature and the landscape of the Pacific Northwest.

As the jury we elected to maintain a balanced representation of styles and subject matter. We were particularly interested in work that conveyed evidence of the artists' personal creative explorations, artistic commitment and expression related to the concept of the Cascadia call.

While the jury paid careful attention to the way artists sought to represent regional plant and animal species of Cascadia, we were also interested in various works that included non-indigenous species such as the blackberry bushes, and the yellow flowered Achillea that have become such pervasive parts of this landscape. Also of interest to us were the artworks that represented not only plant and animal life but the human intervention into the worlds, whether through industrial agriculture or mechanical deforestation. The exhibition is not only a reminder that the natural world is a constant wellspring for artistic inspiration, but also that it is tremendously fragile and at risk of destruction.

We would like to extend our gratitude to all of the artists who submitted work, and we would like to thank the Arts Council of Surrey staff and volunteers — and particularly Kay Vanderventer and Leah McCullough — for their dedicated work to make this exhibition a come alive.

Elizabeth Barnes, Jordan Strom, Pamela Yokome

## About the Jurors

Elizabeth Barnes is a painter and educator living in Vancouver, British Columbia. She teaches at Kwantlen University and the Emily Carr University of Art + Design. Her work centres on questions as to the nature of contemporary painting in its relationship to history, time, materiality, corporeity, language, technology and process.

Jordan Strom is the Curator of Exhibitions and Collections at the Surrey Art Gallery. Prior to arriving at the Surrey Art Gallery in 2009, Jordan worked in various curatorial capacities at the Kamloops Art Gallery, Vancouver Art Gallery and the Presentation House Gallery. He is the Founding Editor of *Fillip*, a Vancouver-based magazine of writing on contemporary art.

Pamela Yokome is Vice Chair of Darts Hill Trust Society, a Darts Hill Guide, one of the co-ordinators of the Propagation Group and a Master Gardener. She is also involved in the BC Bonsai Society and the Alpine Garden Club. Pam is retired after nearly 40 years in Engineering working as a piping designer and draughtsman.



13750 – 88 Avenue  
Surrey, BC V3W 3L1  
604-501-5566  
artgallery@surrey.ca  
www.arts.surrey.ca

The Gallery thanks the following for their continuing financial support



Canada Council  
for the Arts

Conseil des Arts  
du Canada

