

NO: R042

COUNCIL DATE: March 7, 2022

REGULAR COUNCIL

TO: **Mayor & Council** DATE: **February 24, 2022**

FROM: **General Manager, Engineering** FILE: **5600-15**

SUBJECT: **Proposed Amendments to Drinking Water Conservation Plan By-law, 2004, No. 15454**

RECOMMENDATION

The Engineering Department recommends that Council:

1. Receive this report for information;
2. Approve proposed amendments to the *Drinking Water Conservation Plan By-law, 2004, No. 15454*, as documented in Appendix “I” of this report; and
3. Authorize the City Clerk to bring forward the necessary amendment bylaw for the required readings.

INTENT

The purpose of this report is to obtain Council’s approval to adopt amendments to the *Drinking Water Conservation Plan By-law, 2004, No. 15454* (the “Bylaw”), as documented in Appendix “I”, in response to recent changes in watering restrictions adopted by Metro Vancouver.

BACKGROUND

Metro Vancouver’s Drinking Water Conservation Plan (“DWCP”) is a regional policy developed by Metro Vancouver following consultation with member municipalities and other relevant stakeholders. The main purpose of the DWCP is to manage the use of drinking water during periods of high-water demand, water shortage and/or emergencies.

There are four stages of watering restrictions in the DWCP, as outlined below:

- Stage 1: reduces demand in summer months and is automatically in effect on May 1 until October 15 each year.
- Stages 2 and 3: activated and deactivated by the Greater Vancouver Water District (“GVWD”) Commissioner, are likely to be activated during unusually hot and dry conditions to maximize conservation.

- Stage 4: activated and deactivated by the GVWD Commissioner during an emergency to immediately limit water use to essential needs only.

Each member municipality elects whether to adopt the restrictions outlined in DWCP as a bylaw to allow for their enforcement. Traditionally, every member municipality has revised their bylaw to incorporate updates to the DWCP in an effort to have consistent region-wide restrictions. In fall 2021, the Metro Vancouver Board approved amendments to the DCWP and the City's Bylaw requires amendments to reflect Metro Vancouver's changes.

DISCUSSION

Lawn watering accounts for one of the largest components in summer water consumption. Metro Vancouver's last major update to the DWCP and related Bylaw was done in 2018, where the main changes were to reduce lawn sprinkling from three days a week to two days a week under Stage 1, and to further reduce it to one day a week under Stage 2. Following the reduction of lawn watering frequency implemented in 2018, from three days to two days a week, the City saw approximately 4% reduction in peak summer water consumption.

Last summer, the region experienced a record-breaking heat wave and it led to an unusually high water demand as shown in Figure 1. Despite this condition, unlike the conditions in summer 2015, the source water storage level was maintained within the normal range, and Metro Vancouver remained in Stage 1 of the DWCP.

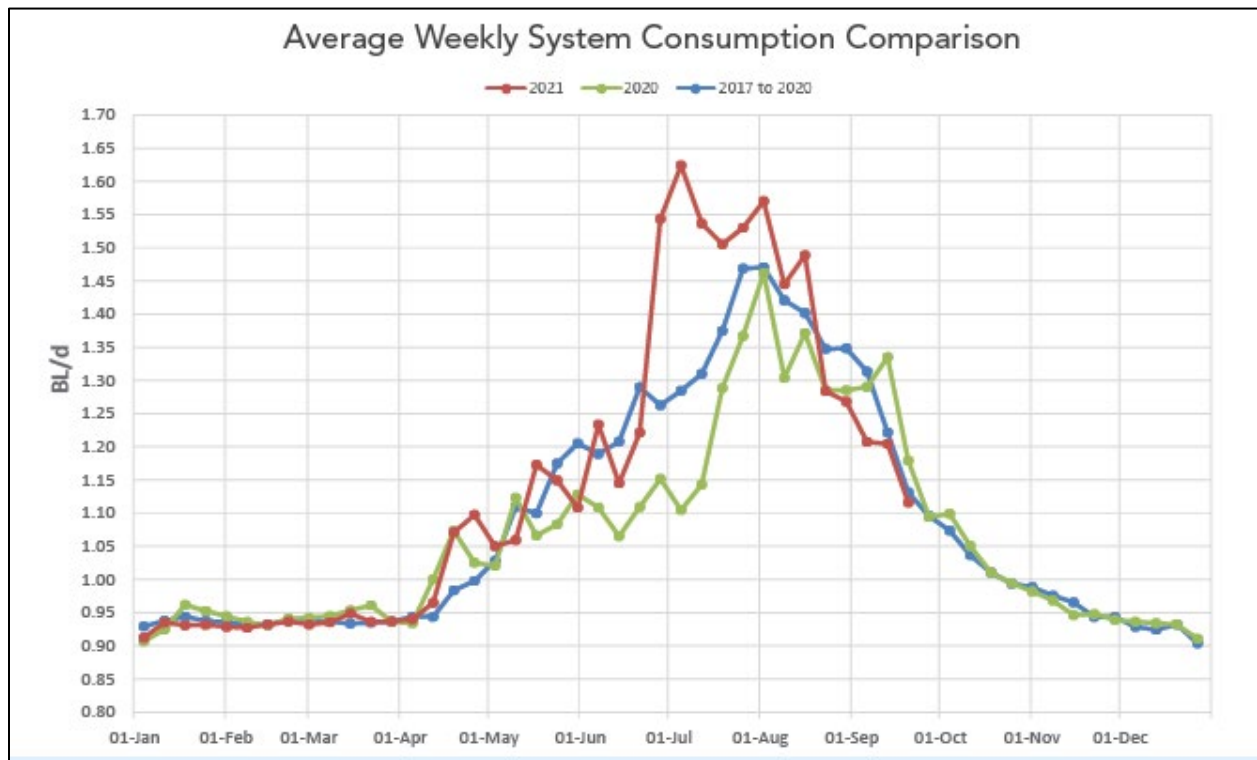


Figure 1 – Average Weekly Regional Water Demand (source: Metro Vancouver)

Lawn Watering Frequency (Stage 1 and Stage 2)

The Metro Vancouver Board has approved reducing the Stage 1 lawn watering frequency from two days a week to one day a week and changing the Stage 2 lawn watering frequency from one day a week to no lawn watering.

It should be noted that the reduction in lawn watering frequency by itself was not successful in managing the increase in water demand when the weather was extremely warm, as evidenced in summer 2021. This suggests that further reduction in lawn watering frequency, as currently proposed, may or may not result in lower peak summer water consumption as weather conditions could play a significant role in the overall water demand.

Nevertheless, the reduction in lawn watering frequency supports the overall water conservation effort and encourages responsible usage of treated drinking water in the region.

Lawn Watering Timeline (Stage 1)

Metro Vancouver has approved changing the Stage 1 lawn watering timeline as follows:

| Lawn Watering Method | Current By-Law | Metro Vancouver’s Approved Amendments | |
|----------------------|----------------|---------------------------------------|-----------------|
| | | Residential | Non-Residential |
| Automatic sprinkler | 4 am – 9 am | 5 am – 7 am | 4 am – 6 am |
| Handheld device | | 6 am – 9 am | 6 am – 9 am |

The intent of this proposed change is to flatten or spread out the overall peak water demand in the region, and to reduce the risk of capacity issues in both Metro Vancouver’s and municipalities’ water systems. The proposed amendment will promote consistent region-wide restrictions.

Flower, Shrub and Tree Watering (Stage 1 and 2), Excluding Edible Plants

Metro Vancouver has approved changing the Stage 1 and Stage 2 flower, shrub and tree watering timeline as follows:

| Flower, Shrub and Tree Watering Method | Current By-law | | Metro Vancouver’s Approved Amendments | |
|--|----------------|-----------------|---------------------------------------|-----------------|
| | Residential | Non-Residential | Residential | Non-Residential |
| Automatic sprinkler | 4 am – 9 am | 1 am – 9 am | 5 am – 9 am | 4 am – 9 am |
| Handheld device | anytime | anytime | anytime | anytime |

The intent of this proposed change is to align the watering timeline with that allowed for lawn watering for the purpose of spreading out the peak water demand.

Communication/ Education Strategy

To introduce the proposed amendments, Metro Vancouver and City staff have prepared a comprehensive communication/education strategy as summarized below:

| Jurisdiction | Communication Strategy | Timeline |
|-----------------|---|--------------------|
| Metro Vancouver | <ul style="list-style-type: none">- Send emails to relevant industry associations- Issue news release and social media advisory- Send postcards to all homes with lawn | April 2022 |
| City of Surrey | <ul style="list-style-type: none">- Webpage update- Issue news release and social media advisory- Digital message or Traffic sign boards- Info tower in Recreation Centres/Libraries | April and May 2022 |

Additionally, Metro Vancouver and some member municipalities, including Surrey, are developing an outreach strategy to employ co-op students to visit select neighborhoods and provide educational information on these proposed changes.

Enforcement Strategy

For summer 2022, the enforcement approach will be focused on providing educational information on the proposed changes. Staff will continue to monitor the number of violations reported, especially repeated violations from the same address, and discuss the appropriate enforcement strategy with the Bylaw Services division accordingly.

Housekeeping Amendments

In addition to the recommended changes outlined above, staff recommend a number of housekeeping amendments to ensure consistent wording throughout the Bylaw, as documented in Appendix "I".

Legal Services Review

Legal Services has reviewed this report and the related Bylaw amendments and have no concerns.

SUSTAINABILITY CONSIDERATIONS

The work of the proposed Bylaw amendments supports the objectives of the City's Sustainability Charter 2.0. In particular, this work relates to the Sustainability Charter 2.0 themes of Infrastructure and Health and Wellness. Specifically, this work supports the following Desired Outcomes ("DO's") and Strategic Direction ("SD"):

- Water DO15: All water is used efficiently, and per capita water use is decreasing year over year;
- All Infrastructure DO3: Infrastructure systems are designed to protect human health, preserve environmental integrity, and be adaptable to climate change impacts; and
- Water SD12: Continue to explore, develop and implement policies and tools to support water conservation and recovery.

CONCLUSION

The proposed Bylaw amendments, as documented in this report, will ensure that the City's *Drinking Water Conservation Plan By-law, 2004, No. 15454* is aligned with Metro Vancouver's Drinking Water Conservation Plan to help ensure a consistent regional approach to managing water resources.

Scott Neuman, P. Eng.
General Manager, Engineering

Appendix "I": Proposed Amendments to Drinking Water Conservation Plan By-law, 2004, No. 15454

[https://surreybc.sharepoint.com/sites/eng.administration/wp_docs/2022/admin/cr/final/march 7/proposed amendments to drinking water conservation plan bylaw.docx](https://surreybc.sharepoint.com/sites/eng.administration/wp_docs/2022/admin/cr/final/march%207/proposed%20amendments%20to%20drinking%20water%20conservation%20plan%20bylaw.docx)
JHS 3/3/22 9:41 AM

**Proposed Amendments to
*Drinking Water Conservation Plan By-Law No.15454***

The following amendments are proposed to *Drinking Water Conservation Plan By-law No. 15454*, as amended:

1. In Section 2.1 DEFINITIONS add the following definition as new Section (a.1):

“Automatic Watering” means applying water using an automated water delivery system that requires only minimal human intervention or supervision and typically employs mechanical, electronic or other components and devices, including but not limited to timers, sensors, computers or mechanical appliances.
2. In Section 2.1 DEFINITIONS add the following definition as new Section (e.2):

“Manual Watering” means applying water using a device or tool that is manually held or operated by a human being, without automatic watering.
3. In Section 5.1 (a), delete the words "or Stage 2 Restrictions".
4. In Section 5.1 (b), delete the words "or Stage 2 Restrictions".
5. In Section 5.1, replace the words “Stage 3” with “Stage 2” and replace the words “Stage 4” with “Stage 3 and Stage 4”.
6. In Section 5.6, replace the words “Stage 3” with “Stage 2” and delete the words “or Stage 2 Restrictions”.
7. In Section 5.7, replace the words “Stage 4” with “Stage 3 and Stage 4”.
8. In Section 1.1 (a) (i) in Schedule 1, delete the words “Wednesdays and” and replace the words “4:00 a.m. and 9:00 a.m.” with “5:00 a.m. and 7:00 a.m. with Automatic Watering, or 6:00 a.m. and 9:00 a.m. with Manual Watering”.
9. In Section 1.1 (a) (ii) in Schedule 1, delete the words “Thursdays and” and replace the words “4:00 a.m. and 9:00 a.m.” with “5:00 a.m. and 7:00 a.m. with Automatic Watering, or 6:00 a.m. and 9:00 a.m. with Manual Watering”.
10. In Section 1.1 (a) (iii) in Schedule 1, replace the words “between the hours of 1:00 a.m. and 6:00 a.m. and on Fridays between the hours of 4:00 a.m. and 9:00 a.m.” with “between the hours of 4:00 a.m. and 6:00 a.m. with Automatic Watering, or 6:00 am to 9:00 am with Manual Watering”.
11. In Section 1.1 (a) (iv) in Schedule 1, replace the words “between the hours of 1:00 a.m. and 6:00 a.m. and on Fridays between the hours of 4:00 a.m. and 9:00 a.m.” with “between the hours of 4:00 a.m. and 6:00 a.m. with Automatic Watering, or 6:00 am to 9:00 am with Manual Watering”.
12. In Section 1.1(c)(ii) in Schedule 1, replace the words “4:00 a.m.” with “5:00 a.m.”.

13. In Section 1.1(c)(iii) in Schedule 1, replace the words “1:00 a.m.” with “4:00 a.m.”.
14. Delete Section 2.1(a)(i) to 2.1(a)(iv) in Schedule 1.
15. Add the following new Section 2.1 (a)(vi):

“with a valid Special Sprinkling Permit issued in Stage 1”.
16. In Section 2.1(e)(ii) in Schedule 1, replace the words “4:00 a.m.” with “5:00 a.m.”.
17. In Section 2.1(e)(iii) in Schedule 1, replace the words “1:00 a.m.” with “4:00 a.m.”.
18. Add the following new Section 2.1 (h):

“Water City and school lawns, parks, and grassed boulevards.”.
19. In Section 2.2(a) in Schedule 1, add the words “issued in Stage 1” immediately following the words "Natural Pest Control".
20. In Section 2.2(b)(ii) in Schedule 1, delete the words “Fairway watering is allowed anytime on any one day in a 7-day period, except if operating under and approved Water Use Plan”.
21. In Section 3.1(a)(i) in Schedule 1, delete the words “, except the Person who waters a Lawn with a valid and subsisting Special Sprinkling Permit – New Lawn or Special Sprinkling Permit – Natural Pest Control provided the Permit was issued prior to the announcement of Stage 3 Restrictions and the Person is and has been at all times in compliance with the Permit”.
22. In Section 3.1(a)(ii) in Schedule 1, delete the word “and”.
23. In Section 3.1(a)(iv) in Schedule 1, delete the words “unless if operating under approved Water Use Plan” and add a semicolon after the word "boulevards".
24. In Schedule 2, replace the words “4 AM to 9 AM” with “5 AM to 7 AM with Automatic Watering, 6 AM to 9 AM with Manual Watering” from the first bullet point.
25. In Schedule 2, delete the words “Wednesdays and” and “Thursdays and” from the second bullet point.
26. In Schedule 2, replace the words “1 AM to 6 AM” with “4 AM to 6 AM with Automatic Watering, 6 AM to 9 AM with Manual Watering.” in the third bullet point and delete the words “and on Fridays from 4 AM to 9 AM.”.
27. In Schedule 2, replace the words “1 AM to 6 AM” with “4 AM to 6 AM with Automatic Watering, 6 AM to 9 AM with Manual Watering.” in the fourth bullet point and delete the words “and on Fridays from 4 AM to 9 AM.”.
28. In Schedule 2, replace the words “4 AM” with “5 AM” and replace the word “1 AM” with “4 AM” in the seventh bullet point.

29. In Schedule 3, replace the words “allowed at all premises only one day per week” in the first bullet point with “prohibited”.
30. In Schedule 3, delete the second bullet point in its entirety.
31. In Schedule 3, delete the words “That even-numbered non-residential addresses, including mixed-use building (combined residential and commercial usages), City and school properties may water only on Mondays from 1 AM to 6 AM, and that odd-numbered non-residential addresses, including mixed-use building (combined residential and commercial usages), City and school properties may water only on Tuesdays from 1 AM to 6 AM.” from the third bullet point.
32. In Schedule 3, replace the words “4 AM” with “5 AM” and “1 AM” with “4 AM” in the eleventh bullet point.
33. Add following new bullet points to Schedule 3:
 - “That watering City and school lawns, parks and grass boulevards is not allowed”
 - “That no new Special Sprinkling Permits will be issued; existing permits applied for under Stage 1 are still valid until the expiry date stated on the permit.”
34. In Schedule 4, delete the words “, unless if operating under an approved Water Use Plan” from the second bullet point.
35. Add following new bullet point to Schedule 4:
 - “All Special Sprinkling Permits issued for lawn watering are invalidated”.
36. In Schedule 6, replace the words “Stage 4” with “Stage 3”.
37. In Schedule 6, replace the words “4:00” with “5:00”.
38. In Schedule 7, replace the words “14 days” with “21 days” each time they appear.
39. In Schedule 7, replace the words “4:00” with “5:00”.
40. In Schedule 7, replace the words “Stage 4” with “Stage 3” each time they appear.

CITY OF SURREY

BY-LAW NO. 15454

Drinking Water Conservation Plan By-law

.....

Amended by: 17588, 03/12/12; 18598, 12/14/15; 18721, 05/16/16; 19530, 04/09/18; 19983, 12/16/19; 20226, 12/21/20; 20512, 12/24/21

THIS IS A CONSOLIDATED BYLAW PREPARED BY THE CITY OF SURREY FOR CONVENIENCE ONLY. THE CITY DOES NOT WARRANT THAT THE INFORMATION CONTAINED IN THIS CONSOLIDATION IS CURRENT. IT IS THE RESPONSIBILITY OF THE PERSON USING THIS CONSOLIDATION TO ENSURE THAT IT ACCURATELY REFLECTS CURRENT BYLAW PROVISIONS.

THE COUNCIL OF the CITY OF SURREY, in open meeting assembled, enacts as follows:

PART 1 : CITATION

1.1 This By-law may be cited as "Drinking Water Conservation Plan By-law, 2004, No. 15454".

PART 2 : DEFINITIONS AND INTERPRETATION

2.1 In this By-law:

(a) "Automatic Shut-off Device" means a device attached to a water hose that shuts off the supply of water automatically unless hand pressure is applied to allow the supply of water.

(a.1) "Automatic Watering" means applying water using an automated water delivery system that requires only minimal human intervention or supervision and typically employs mechanical, electronic or other components and devices, including but not limited to timers, sensors, computers or mechanical appliances.

(b) "City" means the City of Surrey.

(c) "City Engineer" means the General Manager, Engineering for the City or his or her designate.

(d) "Commissioner" means the Commissioner of the Greater Vancouver Water District.

(e) "Drip Irrigation" means a system using irrigation components which consume less than 20 gallons (91 litres) per hour and operate at less than 25 PSI (172 kPa) to deliver Water to the root zone of the plant material being irrigated.

(e.1) "Lawns" includes grass growing on any lot, cemeteries, ornamental lawns at City facilities, and grassed boulevards, whether or not the grass is newly planted.

(e.2) "Manual Watering" means applying water using a device or tool that is manually held or operated by a human being, without automatic watering.

- (f) "Permit" means a permit issued under Part 5.
- (g) "Person" includes a municipality, a regional district, the government of British Columbia, and any body appointed or created under an enactment of Canada or British Columbia.
- (h) "Public Announcement" means one or more advertisements or public service announcements in any one of:
 - (i) a television or radio broadcast from a station that broadcasts to the City;
 - (ii) a newspaper or other publication intended for general circulation, including one that is distributed without charge to the reader, that contains news and advertising, and is distributed within the City at least once per week.
- (i) "Restriction Stage" means Stage 1 Restrictions, Stage 2 Restrictions, Stage 3 Restrictions, or Stage 4 Restrictions.
 - (i.1) "Special Sprinkling Permit – Natural Pest Control" means a permit to grant special relaxation from the sprinkling regulation then in effect to water an existing Lawn after the application of natural pest control (nematode) with certain restrictions defined in the permit.
 - (i.2) "Special Sprinkling Permit – New Lawn" means a permit to grant special relaxation from the sprinkling regulation then in effect to water a newly seeded or sodded Lawn with certain restrictions defined in the permit.
- (j) "Stage 1 Restrictions" means the restrictions on Water use described in sections 1.1 and 1.2 of Schedule 1.
- (k) "Stage 2 Restrictions" means the restrictions on Water use described in sections 2.1 and 2.2 of Schedule 1.
- (l) "Stage 3 Restrictions" means the restrictions on Water use described in sections 3.1 and 3.2 of Schedule 1.
- (m) "Stage 4 Restrictions" means the restrictions on Water use described in sections 4.1 and 4.2 of Schedule 1.
- (n) "Water" used as a noun means water supplied directly or indirectly by Greater Vancouver Water District or the City, whether or not mixed with rain water, gray water or recycled water.
- (o) Deleted by Bylaw 18721.
- (p) "Water" used as a verb, and "Watering", mean the application or distribution of Water (used as a noun) to lands or plants by any means, including but not limited to hoses, sprinklers, or Drip Irrigation.
- (q) "Water Use Plan" means a Water Use Plan approved by the City Engineer under Part 4.

- 2.2 The schedules to this By-law are integral parts of this By-law.
- 2.3 The City Engineer may delegate some or all of his or her powers and duties under this By-law.

PART 3 : DECLARATION AND ANNOUNCEMENT OF RESTRICTION STAGES

- 3.1
 - (a) The Commissioner may, by letter to the City Clerk or other City official, declare that the Greater Vancouver Water District has activated a Restriction Stage.
 - (b) If the Commissioner makes a declaration under subsection (a), the Restriction Stage described in the declaration comes into force in the City 72 hours after the Commissioner or the City Clerk or other City official makes a Public Announcement of the declaration.
 - (c) When a Restriction Stage comes into force under this section, a Restriction Stage that had been in force, if any, ceases to be in force.
- 3.2 If no Restriction Stage is in force on May 1st of any year, Stage 1 Restrictions come into force on that date without prior declaration of the Commissioner or announcement under section 3.3.
- 3.3
 - (a) If the Commissioner declares that the Greater Vancouver Water District has activated Stage 1 Restrictions, a Public Announcement by the City Clerk or other City official or the Commissioner is sufficient for the purposes of paragraph 3.1(b) if it contains substantially the information set out in Schedule "2".
 - (b) If the Commissioner declares that the Greater Vancouver Water District has activated Stage 2 Restrictions, a Public Announcement by the City Clerk or other City official or the Commissioner is sufficient for the purposes of paragraph 3.1(b) if it contains substantially the information set out in Schedule "3".
 - (c) If the Commissioner declares that the Greater Vancouver Water District has activated Stage 3 Restrictions, a Public Announcement by the City Clerk or other City official or the Commissioner is sufficient for the purposes of paragraph 3.1(b) if it contains substantially the information set out in Schedule "4".
 - (d) If the Commissioner declares that the Greater Vancouver Water District has activated Stage 4 Restrictions, a Public Announcement by the City Clerk or other City official or the Commissioner is sufficient for the purposes of paragraph 3.1(b) if it contains substantially the information set out in Schedule "5".
- 3.4
 - (a) No Restriction Stage remains in force after October 15th of any year, unless the Commissioner makes a declaration under this section.
 - (b) At any time before or after October 15th of any year the Commissioner may, by letter to the City Clerk or other City official declare that notwithstanding subsection (a), a Restriction Stage will remain in force or come into force after October 15th.

- (c) Subsections 3.1(b), 3.1 (c) and section 3.3 apply to a declaration made under this section, with such changes as are necessary, except that a Public Announcement of a declaration under this section shall state that the Restriction Stage that is continued in force or that comes into force after October 15th will remain in force until further declaration of the Commissioner.
 - (d) The Commissioner may make one or more declarations under this section.
- 3.5
- (a) If at any time the City Engineer deems it to be in the public interest, he or she may direct that any and all less essential services be further reduced or curtailed until such time as the City Engineer deems it advisable to restore any or all of the services.
 - (b) The City Engineer may impose restrictions under paragraph 3.5(a) in any part of the City or all of the City as he or she deems advisable.
 - (c) Any such restrictions will come into force in the City 72 hours after the City Clerk or other City official makes a Public Announcement of the restriction.
 - (d) No Person will act contrary to the restrictions imposed by the City Engineer pursuant to paragraph 3.5(a).

PART 4 : WATER USE PLANS

- 4.1 A representative or operator from a high outdoor consumer of water may apply in writing to the City Engineer for approval of a Water Use Plan stipulating:
- (a) the volume of Water historically consumed from May 1st to October 15th of the last five years;
 - (b) the volume of Water projected to be consumed from May 1st to October 15th of each year under the proposed Water Use Plan;
 - (c) the measures to be followed by the operator to conserve Water and to reduce the use of Water;
 - (d) the schedule for Watering for each Restrictions Stage, except Stage 4;
 - (e) reporting of actual water use to the City Engineer not less than once per month when Stage 1 Restrictions or Stage 2 Restrictions are in force, and not less than once every two weeks when Stage 3 Restrictions are in force; and
 - (f) such other information or commitments, conditions or restrictions as the City Engineer may require.
- 4.2 The City Engineer may approve a proposed Water Use Plan in whole or in part, and may amend the proposed Water Use Plan, or add such other or further commitments, conditions and restrictions as the City Engineer considers advisable.
- 4.3 If the operator consents to adopt a Water Use Plan approved by the City Engineer it shall signify such consent in writing, specifying the date on which the operator will adopt the Water Use Plan, in which case the Water Use Plan shall come into force for that operation

on the later of the date specified in the notice of consent, or the date on which the City Engineer receives the written notice of consent.

- 4.4 If the operator does not consent to adopt the Water Use Plan approved by the City Engineer, the Water Use Plan shall be of no force or effect.
- 4.5 If a Water Use Plan is in force for an operation, the operator shall comply with all conditions and restrictions set out in the Water Use Plan.
- 4.6 The City Engineer may terminate or suspend a Water Use Plan by notifying the operator in writing at least seven days before the termination date.
- 4.7 An operator may terminate a Water Use Plan by notifying the City Engineer in writing, in which case the Water Use Plan is terminated on the later of the date specified in the notice, or the date on which the City Engineer receives the notice.
- 4.8 When a Water Use Plan is terminated pursuant to clause 4.6 and 4.7 of this bylaw, the operator must follow and comply with the prevailing conditions and restriction of this bylaw.

PART 5 : PERMITS

Permits

- 5.1 A Person who:
 - (a) has installed a new Lawn, either by placing sod or turf or by seeding, or who has installed new landscaping on a substantial part of the outdoor portion of a premises may apply to the City Engineer for a Special Sprinkling Permit – New Lawn authorizing the Person to Water the new Lawn and new landscaping when Stage 1 Restrictions ~~or Stage 2 Restrictions~~ are in force, at times specified in the Permit, at the premises described in the Permit, during the currency of the Permit; or
 - (b) uses nematodes to treat European Chafer Beetles on an existing Lawn as natural pest control may apply to the City Engineer for a Special Sprinkling Permit – Natural Pest Control authorizing the Person to Water the Lawn more frequently when Stage 1 Restrictions ~~or Stage 2 Restrictions~~ are in force, at times specified in the Permit, at the premises described in the Permit, during the currency of the Permit.

A Permit under this section 5.1 will remain valid until the stated expiry date if the permit was issued prior to the announcement of Stage ~~32~~ Restrictions. No permit will be issued or renewed after the announcement of Stage ~~23~~ Restrictions. A Permit does not exempt the holder from Stage ~~43 and Stage 4~~ Restrictions.

- 5.2 The City Engineer, upon being satisfied that an applicant qualifies under section 5.1, shall issue to the applicant:

- (a) a Special Sprinkling Permit – New Lawn in the form set out in Schedule 6 upon payment by the applicant of a fee in the amount of \$38.00; or
 - (b) a Special Sprinkling Permit – Natural Pest Control in the form set out in Schedule 7 to the applicant and no fee is payable by the applicant.
- 5.3 A Permit issued under section 5.2 shall be affixed to a post facing the street serving the premises, beside the principal driveway so that it is visible from the street.
- 5.4 A Permit issued under section 5.2 shall expire and be of no force or effect 21 days after the date of its issue, unless the Person has been issued an extension under section 5.5.
- 5.5 Before or after the expiration of a Permit issued under section 5.2 a Person may apply for one extension of the Permit on the same terms and conditions as may be imposed under section 5.2. Such an extension shall end on or before 42 days from the date of the issue of the Permit under section 5.2.
- 5.6 Despite section 5.5, no new Special Sprinkling Permit – New Lawn or Special Sprinkling Permit – Natural Pest Control will be issued or renewed when Stage ~~2~~3 Restrictions are in force. A Special Sprinkling Permit – New Lawn or Special Sprinkling Permit – Natural Pest Control issued under Stage 1 Restrictions ~~or Stage 2 Restrictions~~ will remain valid until the stated expiry date, provided that the conditions of the Permit are met at all times.
- 5.7 Despite section 5.5, any issued Special Sprinkling Permit – New Lawn or Special Sprinkling Permit – Natural Pest Control will no longer be valid when Stage ~~3 and Stage 4~~ Restrictions are in force.

PART 6 : OFFENCES AND PENALTIES

- 6.1 Every Person who violates or contravenes any of the provisions of this By-law, or suffers or allows to be done any act or thing that violates or contravenes this By-law, commits an offence.
- 6.2 A prosecution under this By-law may be commenced by:
- (a) proceedings under Division 3 of Part 8, of the *Community Charter*; or
 - (b) prosecution of the offence in accordance with the *Offence Act*.
- 6.3 Subject to section 6.4, if a prosecution is commenced pursuant to paragraph 6.2(b), upon conviction the offender shall be liable to pay a fine:
- (a) for a first conviction for an offence, of not more than \$10,000 and not less than \$3000; and
 - (b) for a second or subsequent conviction for an offence, of not more than \$10,000 and not less than \$5000 for each offence.
- 6.4 Where a prosecution is commenced pursuant to paragraph 6.2(b) against a Person unlawfully using Water in a commercial operation while Stage 4 Restrictions are in effect,

whether or not a Water Use Plan had been obtained for the commercial operation, upon conviction that Person shall be liable to pay a fine of not less than \$5000.

- 6.5 Paragraph 6.3(b) applies whether or not a second or subsequent conviction is for conduct that preceded the conduct that is the subject matter of the prosecution then before the court.
- 6.6 If an offence under this By-law continues for more than one day, separate fines each not exceeding the maximum fine for that offence may be imposed for each day or part thereof in respect of which the offence occurs or continues.
- 6.7 In a prosecution under this By-law the onus of establishing an exemption under subsections 1.2, 2.2, or 3.2 of Schedule 1 lies on the Person claiming the exemption.

PART 7 : DATE OF COMING INTO FORCE

- 7.1 This By-law comes into force and takes effect on the date of its passing.

PASSED THREE READINGS by Council on the 19th day of July, 2004.

RECONSIDERED AND FINALLY ADOPTED, signed by the Mayor and Clerk, and sealed with the Corporate Seal on the 26th day of July, 2004.

_____ Mayor

_____ Clerk

SCHEDULE 1: RESTRICTION STAGES

PART 1: STAGE 1 RESTRICTIONS

- 1.1 Subject to Section 1.2 of this Schedule, when Stage 1 Restrictions are in force, no Person shall:
- (a) Water Lawns, except:
 - (i) at residential premises with even numbered civic addresses, on ~~Wednesdays and~~ Saturdays between the hours of ~~45:00~~ 5:00 a.m. and ~~79:00~~ 9:00 a.m. with Automatic Watering, or 6:00 am and 9:00 am with Manual Watering;
 - (ii) at residential premises with odd numbered civic addresses, on ~~Thursdays and~~ Sundays between the hours of ~~445:00~~ 5:00 a.m. and ~~97:00~~ 9:00 a.m. with Automatic Watering, or 6:00 am and 9:00 am with Manual Watering;
 - (iii) at non-residential premises with even numbered civic addresses, including mixed-use building (combined residential and commercial usages), City and school lawns, parks and grassed boulevards, on Mondays between the hours of 4:00 a.m. and 6:00 a.m. with Automatic Watering, or 6:00 am to 9:00 am with Manual Watering; ~~between the hours of 1:00 a.m. and 6:00 a.m. and on Fridays between the hours of 4:00 a.m. and 9:00 a.m.~~ Exemption may be granted to the City and school if operating under an approved Water Use Plan;
 - (iv) at non-residential premises with odd numbered civic addresses, including mixed-use building (combined residential and commercial usages), City and school lawns, parks and grassed boulevards, on Tuesdays between the hours of 4:00 a.m. and 6:00 a.m. for Automatic Watering, or 6:00 am to 9:00 am for Manual Watering; ~~between the hours of 1:00 a.m. and 6:00 a.m. and on Fridays between the hours of 4:00 a.m. and 9:00 a.m.~~ Exemption may be granted to the City and school if operating under an approved Water Use Plan;
 - (b) use a hose providing Water to wash boats or motor vehicles, driveways, sidewalks, parkades, walls, roofs or other outdoor surfaces, unless the hose is equipped with an Automatic Shut-off Device.
 - (c) Water flowers, planters, shrubs and trees, excluding edible plants, except:
 - (i) by using handheld hose with Automatic shut-off device, soaker hose, water container or drip irrigation;
 - (ii) by using sprinkler at residential premises between the hours of ~~54:00~~ 5:00 a.m. and 9:00 a.m.;
 - (iii) by using sprinkler at non-residential premises, including within mixed-use building (combined residential and commercial usages), City and school properties, between the hours of ~~41:00~~ 4:00 a.m. and 9:00 a.m. Exemption may

be granted to the City and school if operating under an approved Water Use Plan; or

- (d) Water sand-based and soil-based playing fields, except:
 - (i) between the hours of 7:00 p.m. and 9:00 a.m.;
 - (ii) if Watering newly seeded fields with a valid and subsisting Special Sprinkling Permit – New Lawn;
 - (iii) if operating under an approved Water Use Plan.

1.2 Section 1.1 of this Schedule does not apply to:

- (a) a Person who waters a Lawn with a valid and subsisting Special Sprinkling Permit – New Lawn or Special Sprinkling Permit – Natural Pest Control, at premises described in the Permit, provided the Person is and has been at all times in compliance with the Permit;
- (b) Watering:
 - (i) Deleted by Bylaw 19530
 - (ii) Deleted by Bylaw 19530
 - (iii) golf courses, provided that the City may ask golf course operators to cut Water use on fairways by as much as possible;
 - (iv) turf at turf farms;
 - (v) artificial turf or outdoor tracks where Watering is required for dust control or safety; and
 - (vi) edible plants ;
- (c) Water Play Parks;
- (d) ornamental fountains and water features;
- (e) pools, spas and garden ponds;
- (f) pressure washing; or
- (g) indoor commercial car washes.

PART 2: STAGE 2 RESTRICTIONS

2.1 Subject to Section 2.2 of this Schedule, when Stage 2 Restrictions are in force, no Person shall:

- (a) Water Lawns, except:
 - (i) ~~Deleted. at residential premises with even numbered civic addresses, on Wednesdays between the hours of 4:00 a.m. and 9:00 a.m.;~~
 - (ii) ~~Deleted. at residential premises with odd numbered civic addresses, on Thursdays between the hours of 4:00 a.m. and 9:00 a.m.;~~
 - (iii) ~~Deleted. at non-residential premises with even numbered civic addresses, including mixed-use building (combined residential and commercial usages), City and school lawns, parks and grassed boulevards, on Mondays between the hours of 1:00 a.m. and 6:00 a.m. Exemption may be granted to The City and school if operating under an approved Water Use Plan;~~
 - (iv) ~~Deleted. at non-residential premises with odd numbered civic addresses, including mixed-use building (combined residential and commercial usages), City and school lawns, parks and grassed boulevards, on Tuesdays between the hours of 1:00 a.m. and 6:00 a.m. Exemption may be granted to the The City and school if operating under an approved Water Use Plan;~~
 - (v) fairways of golf courses, restricted to one day per week except if operating under an approved Water Use Plan;
 - (vi) with a valid Special Sprinkling Permits issued in Stage 1;
- (b) use a hose providing Water to wash boats or motor vehicles, unless the hose is equipped with an Automatic Shut-off Device;
- (c) use a hose providing Water to wash driveways, sidewalks, parkades, walls, roofs or other outdoor surfaces, unless the hose is equipped with an Automatic Shut-off Device;
- (d) fill or top-up ornamental fountains or water features;
- (e) Water flowers, planters, shrubs and trees, excluding edible plants, except:
 - (i) by using handheld hose with Automatic shut-off device, soaker hose, water container or drip irrigation;
 - (ii) by using sprinkler at residential premises between the hours of ~~4~~5:00 a.m. and 9:00 a.m.;
 - (iii) by using sprinkler at non-residential premises, including mixed-use building (combined residential and commercial usages), City and school properties, between the hours of ~~4~~1:00 a.m. and 9:00 a.m. Exemption may be granted to the City and school if operating under an approved Water Use Plan;
- (f) Water sand-based playing fields, except:

- (i) between the hours of 7:00 p.m. and 9:00 a.m.;
 - (ii) if Watering newly seeded fields with a valid and subsisting Special Sprinkling Permit – New Lawn;
 - (iii) if operating under an approved Water Use Plan; or
- (g) Water soil-based playing fields, except:
- (i) if Watering no more than 4 days per week between the hours of 7:00 p.m. and 9:00 a.m.;
 - (ii) if Watering newly seeded fields with a valid and subsisting Special Sprinkling Permit – New Lawn;
 - (iii) if operating under an approved Water Use Plan;

(h) Water City and school lawns, parks, and grassed boulevards.

2.2 Section 2.1 of this Schedule does not apply to:

- (a) a Person who Waters a Lawn with a valid and subsisting Special Sprinkling Permit – New Lawn or Special Sprinkling Permit – Natural Pest Control issued in Stage 1, at premises described in the Permit issued in Stage 1, provided the Person is and has been at all times in compliance with the Permit;
- (b) Watering:
 - (i) Deleted by Bylaw 19530
 - (ii) greens and tee areas of golf courses. ~~Fairway watering is allowed anytime on any one day in a 7-day period, except if operating under and approved Water Use Plan;~~
 - (iii) turf at turf farms;
 - (iv) artificial turf or outdoor tracks where Watering is required for dust control or safety; and
 - (v) edible plants ; or
- (c) Water Play Parks with user-activated switches;
- (d) pools and spas; or
- (e) indoor commercial car washes.

PART 3: STAGE 3 RESTRICTIONS

3.1 Subject to Section 3.1 of this Schedule, when Stage 3 Restrictions are in force, no Person shall:

- (a) Water:
 - (i) Lawns, ~~except the Person who waters a Lawn with a valid and subsisting Special Sprinkling Permit – New Lawn or Special Sprinkling Permit – Natural Pest Control provided the Permit was issued prior to the announcement of Stage 3 Restrictions and the Person is and has been at all times in compliance with the Permit;~~
 - (ii) flowers, decorative planters, shrubs or trees, unless Watering is carried out by hand using containers, a hose equipped with an Automatic Shut-off Device, or drip irrigation and is not carried out using sprinklers or soaker hoses; ~~and~~
 - (iii) fairways of golf courses unless if operating under approved Water Use Plan;
 - (iv) City and school lawns, parks, and grassed boulevards; ~~unless if operating under approved Water Use Plan~~
- (b) use a hose providing Water to wash boats or motor vehicles, unless the hose is equipped with an Automatic Shut-off Device, and the purpose of washing is to maintain visibility of lights or license plates, or the ability to see through windows, or is otherwise required for the safe operation of the boat or motor vehicle;
- (c) at any premises, use a hose or pressure washer providing Water to wash driveways, sidewalks, parkades, walls, roofs or other outdoor surfaces, unless the hose or pressure washer is equipped with an Automatic Shut-off Device and the purpose of washing the surface is:
 - (i) to prepare the surface for painting, sealing, or similar treatment; or
 - (ii) for the health or safety of any Person;
- (d) deleted by Bylaw 18721;
- (e) deleted by Bylaw 18721;
- (f) fill or top-up ornamental fountains or water features;
- (g) use Water to fill or top-up pools, spas or hot tubs, except for pools, spas, and hot tubs with a valid operating permit from the health authority having jurisdiction over pool and hot tub regulation;
- (h) Deleted by Bylaw 19530

- (i) Water sand-based playing fields, except:
 - (i) if Watering no more than 5 days per week between the hours of 7:00 p.m. and 9:00 a.m.;
 - (ii) if Watering newly seeded fields with a valid and subsisting Special Sprinkling Permit – New Lawn;
 - (iii) if operating under an approved Water Use Plan; or
- (j) Water soil-based playing fields, except:
 - (i) if Watering no more than 3 days per week between the hours of 7:00 p.m. and 9:00 a.m.;
 - (ii) if Watering newly seeded fields with a valid and subsisting Special Sprinkling Permit – New Lawn;
 - (iii) if operating under an approved Water Use Plan;

3.2 Section 3.1 of this Schedule does not apply to:

- (a) Watering:
 - (i) Deleted by Bylaw 19530
 - (ii) greens and tee areas of golf courses, limited to the minimum levels required to maintain areas in useable condition;
 - (iii) turf at turf farms;
 - (iv) artificial turf or outdoor tracks where Watering is required for dust control or safety; and
 - (v) edible plants
- (b) Water Play Parks with user-activated switches; or
- (c) indoor commercial car washes.

PART 4: STAGE 4 RESTRICTIONS

4.1 Subject to Section 4.2 of this Schedule, when Stage 4 Restrictions are in force, no Person shall:

- (a) Water:
 - (i) Lawns, whether newly planted or otherwise;

- (ii) flowers or flower gardens, vegetables or vegetable gardens, decorative planters, shrubs or trees;
 - (iii) outdoor tracks; and
 - (iv) City and school lawns, parks, grass boulevards, yards, sports fields, soil- and sand-based playing fields;
- (b) use a hose providing Water to wash boats or motor vehicles, unless the hose is equipped with an Automatic Shut-off Device, and the purpose of washing is to maintain visibility of lights or license plates, or the ability to see through windows, or is otherwise required for the safe operation of the boat or motor vehicle;
 - (c) use a hose or pressure washer providing Water to wash sidewalks, driveways, walls, roofs or other outdoor surfaces, unless the hose is equipped with an Automatic Shut-off Device, and the washing has been ordered by a regulatory authority;
 - (d) operate ornamental fountains or water features;
 - (e) operate a Water Play Park or public pool;
 - (f) use Water to fill or top-up pools, spas, garden ponds or ornamental fountains;
 - (g) operate a car wash, whether or not it is an indoor car wash; or
 - (h) use Water from a hose providing Water unless the hose is equipped with an Automatic Shut-off Device where engaged in an activity not prohibited in paragraphs 4.1(a) through (g) of this Schedule.

4.2 For greater certainty, Section 4.1 of this Schedule applies to all areas of:

- (a) golf courses;
- (b) turf farms and nurseries; and
- (c) cemeteries.

4.3 All Special Sprinkling Permit issued for lawn watering is invalidated.

PART 5: EXEMPTIONS

5.1 The restrictions set out in Parts 1 to 3 of this Schedule do not apply to a Person operating under a valid and subsisting Water Use Plan issued under Part 4 of this By-law, provided that the Person is in compliance with the Water Use Plan.

SCHEDULE 2: INFORMATION FOR PUBLIC ANNOUNCEMENT OF STAGE 1 RESTRICTIONS

A Public Announcement of Stage 1 Restrictions is sufficient for the purposes of Section 3.3 of this By-law if it includes substantially the following information:

- a. That lawn watering is allowed at residential premises only from ~~5~~4 AM to ~~9~~7 AM with Automatic Watering, 6 AM to 9 AM with Manual Watering;
- b. That even-numbered residential addresses may water only on ~~Wednesdays and~~ Saturdays, and that odd-numbered residential addresses may water only on ~~Thursdays and~~ Sundays;
- c. That lawn watering is allowed at non-residential premises, including mixed-use building (combined residential and commercial usages), City and school properties, with even-numbered addresses only on Mondays from ~~1~~4 AM to 6 AM with Automatic Watering, 6 AM to 9 AM with Manual Watering, and on Fridays from 4 AM to 9 AM. Exemption may be granted to the City and school if operating under an approved Water Use Plan;
- d. That lawn watering is allowed at non-residential premises, including mixed-use building (combined residential and commercial usages), City and school properties, with odd-numbered addresses only on Tuesdays from ~~4~~ AM to 6 AM with Automatic Watering, 6 AM to 9 AM with Manual Watering, and on Fridays from 4 AM to 9 AM. Exemption may be granted to the City and school if operating under an approved Water Use Plan;
- e. That edible plant watering is allowed at any time using any devices or tools;
- f. That flowers, shrubs and trees watering is allowed at any time using hand held hose with automatic shut-off device, soaker hose, water container or drip irrigation;
- g. That flower, shrub and tree watering using sprinkler device is allowed on any day from ~~5~~4 AM to 9 AM for residential and from ~~4~~ AM to 9 AM for non-residential, including within mixed-use building (combined residential and commercial usages), City and school properties. Exemption may be granted to City and school if operating under an approved Water Use Plan;
- h. That when washing a boat or motor vehicle other than at commercial car wash, or hosing or pressure washing outdoor surfaces, water hoses must be equipped with an automatic shut-off device (a nozzle that shuts off automatically unless hand pressure is applied); and
- i. That watering sand-based and soil-based playing fields is allowed between 7 PM and 9 AM, except:
 - (i) if watering newly seeded fields with a valid and subsisting Special Sprinkling Permit – New Lawn; or
 - (ii) if operating under an approved Water Use Plan.

SCHEDULE 3: INFORMATION FOR PUBLIC ANNOUNCEMENT OF STAGE 2 RESTRICTIONS

A Public Announcement of Stage 2 Restrictions is sufficient for the purposes of Section 3.3 of this By-law if it includes substantially the following information:

- a. That lawn watering is ~~prohibited; allowed at all premises only one day per week~~ _____
 - ~~That even-numbered residential addresses may water only on Wednesdays from 4 AM to 9 AM, and that odd-numbered residential addresses may water only on Thursdays from 4 AM to 9 AM~~
- b. ~~That even-numbered non-residential addresses, including mixed-use building (combined residential and commercial usages), City and school properties may water only on Mondays from 1 AM to 6 AM, and that odd-numbered non-residential addresses, including mixed-use building (combined residential and commercial usages), City and school properties may water only on Tuesdays from 1 AM to 6 AM.~~ Exemption may be granted to the City and school if operating under an approved Water Use Plan;
- c. That hosing or pressure washing of outdoor surfaces is allowed using a hose or pressure washer that is equipped with an automatic Shut-off Device (a nozzle that shuts off automatically unless hand pressure is applied);
- d. That filling or topping-up decorative water features is prohibited;
- e. That when washing a boat or motor vehicle other than at commercial car wash, water hoses must be equipped with an automatic shut-off device (a nozzle that shuts off automatically unless hand pressure is applied);
- f. That watering of fairways is allowed once a week, except when operating under an approved Water Use Plan;
- g. That operating water spray park is prohibited unless if it is equipped with user-activated switches;
- h. That edible plant watering is allowed at any time using any devices or tools;
- i. That flowers, shrubs and trees watering is allowed at any time using hand held hose with an automatic shut-off device, soaker hose, water container or drip irrigation;
- j. That flower, shrub and tree watering using a sprinkler device is allowed on any day from ~~5~~ 4 AM to 9 AM for residential premises and from ~~4~~ 4 AM to 9 AM for non-residential premises, including within mixed-use building (combined residential and commercial usages), City and school properties. Exemption may be granted to the City and school if operating under an approved Water Use Plan;
- k. That watering sand-based playing fields is allowed between 7 PM and 9 AM, except:

(i) if watering newly seeded fields with a valid and subsisting Special Sprinkling Permit – New Lawn; or

(ii) if operating under an approved Water Use Plan

•l. That watering soil-based playing fields is allowed no more than 4 days per week between 7 PM and 9 AM, except:

(i) if watering newly seeded fields with a valid and subsisting Special Sprinkling Permit – New Lawn; or

(ii) if operating under an approved Water Use Plan;

m. That watering City and school lawns, parks and grass boulevards is not allowed; and

n. That no new Special Sprinkling Permits will be issued; existing permits applied for under Stage 1 are still valid until the expiry date stated on the permit.

SCHEDULE 4: INFORMATION FOR PUBLIC ANNOUNCEMENT OF STAGE 3 RESTRICTIONS

A Public Announcement of Stage 3 Restrictions is sufficient for the purposes of Section 3.3 of this By-law if it includes substantially the following information:

- a. That lawn watering is not allowed by homes or businesses;
- b. That watering City and school lawns, parks and grass boulevard is not allowed; ~~unless if operating under an approved Water Use Plan~~
- c. That -gardens, shrubs, trees and flower beds may only be watered by hand, by containers or by drip irrigation;
- d. That edible plant watering is allowed at any time using any devices or tools;
- e. That pressure washing or hosing is only allowed for health, safety or preparing a surface for painting;
- f. That filling or topping-up decorative water features is prohibited;
- g. That operating water spray park is prohibited unless if it is equipped with user-activated switches;
- h. That washing of vehicles is restricted to features required for safety (windows, lights, licenses), and the hoses used must be equipped with an automatic shut-off device (a nozzle that shuts off automatically unless hand pressure is applied);
- i. That filling or topping-up of swimming pools, spas and hot tubs is prohibited, except for a facility with a valid operating permit from the health authority having jurisdiction over pool and hot tub regulation;
- j. That watering sand-based playing fields is allowed at no more than 5 days per week between 7 PM and 9 AM, except:
 - (i) if watering newly seeded fields with a valid and subsisting Special Sprinkling Permit – New Lawn; or
 - (ii) if operating under an approved Water Use Plan.;
- k. That watering soil-based playing fields is allowed at no more than 3 days per week between 7 PM and 9 AM, except:
 - (i) if watering newly seeded fields with a valid and subsisting Special Sprinkling Permit – New Lawn; or
 - (ii) if operating under an approved Water Use Plan.;
- l. That watering of fairways is prohibited, except when operating under an approved Water Use Plan; and

| •m.All Special Sprinkling Permits issued for lawn watering is invalidated.

SCHEDULE 5: INFORMATION FOR PUBLIC ANNOUNCEMENT OF STAGE 4 RESTRICTIONS

A Public Announcement of Stage 4 Restrictions is sufficient for the purposes of Section 3.3 of this By-law if it includes substantially the following information:

- a. That lawn watering by homes or businesses is prohibited;
- b. All special sprinkling permit issued for lawn watering is invalidated;
- c. That watering of City and school lawns, parks, grass boulevards, yards, sport fields, soil- and sand-based playing fields is prohibited;
- d. That watering of gardens, shrubs, trees, flower beds including edible plants by any method is prohibited;
- e. That drip irrigation is prohibited;
- f. That private and commercial hosing or pressure washing is prohibited except if ordered by a regulatory authority;
- g. That washing of vehicles using any method is prohibited except for features required for safety (windows, lights, licenses), including at commercial car washes;
- h. That filling or topping-up decorative water features is prohibited;
- i. That filling or topping-up spas, hot tubs and swimming pools is prohibited; and
- j. That the operation of water spray parks is prohibited.



Special Sprinkling Permit – New Lawn

Watering of Newly Turfed or Seeded Lawns

This is to confirm that the residence at _____ has been granted a special relaxation from the sprinkling regulations now in effect and the resident is permitted to water the newly seeded/sodded lawn, in accordance with the following time restrictions, for a period of twenty-one (21) calendar days from the date of installation. **Should Stage 34 Restrictions be announced, this Permit is no longer valid.**

Sprinkling Permitted:

Days: Every day for three (3) weeks.

Time: 54:00 a.m. to 9:00 a.m.

Permit Effective Date:

From: _____ To: _____

Non-Refundable administration fee received.
(Receipt No. _____) File: 4520-09

General Manager,
Engineering

OWNER'S/APPLICANT'S STATEMENT:

I acknowledge that:

- a. this Permit is required to be visibly displayed on the lawn of the residence during its term and that it will be an infraction of Drinking Water Conservation Plan By-law, 2004, No. 15454 if this Permit is not so displayed;
- b. this Permit is issued specifically for lawn seeded/sodded within the last three weeks from the date of this application, as supported by an invoice or delivery slip from the professional landscape contractor who installed it;
- c. the permitted watering will be done only during the hours stipulated on this Permit;
- d. the fee paid is non-refundable;
- e. this Permit is issued to the property at this address for a period of 21 days and may be renewed only once for an additional period of 21 days, if required, upon subsequent application to the City;
- f. upon expiry of this Permit, the prevailing watering restrictions or ban will be applicable and observed;
- g. the City may withdraw or nullify this Permit at any time and will be under no obligation to refund the fee or provide any explanations; and
- h. should Stage ~~4~~3 Restrictions be announced, this Permit is no longer valid.

Date of installation of new turf or seeding: _____

(Owner/Applicant)

(Signature)

Special Sprinkling Permit – Natural Pest Control

Watering of Existing Lawn after Application of Natural Pest Control (Nematode)

Property Address:

Permit Effective Date:

From: _____ To: _____

Days: Every day, for the period of 2114 days; Time: 54:00 a.m. to 9:00 a.m.

Irrigation at this property is permitted outside of current water sprinkling restriction until the expiry date mentioned above. **Should Stage 34 Restrictions be announced, this Permit is no longer valid.** This Permit **MUST BE VISIBLY DISPLAYED** at the front of the property during its term.

OWNER'S/APPLICANT'S STATEMENT:

I acknowledge that:

- a. This Permit is required to be visibly displayed on the lawn of the residence during its term and that it will be an infraction of Drinking Water Conservation Plan By-law, 2004, No. 15454 if this Permit is not so displayed;
- b. This Permit is specifically issued for naturally treating European Chafer Beetles in the property lawn by applying nematode treatment;
- c. The permitted watering will be done only during the hours stipulated on this Permit;
- d. This Permit is issued to the property at this address for a period of ~~2114~~ days and may be renewed only once for an additional period of 14 days, if required, upon subsequent application to the City;
- e. Upon expiry of this Permit, the prevailing watering restrictions or ban will be applicable and observed;
- f. The City may withdraw or nullify this Permit at any time and will be under no obligation to provide any explanations; and
- g. Should Stage ~~43~~ Restrictions be announced, this Permit is no longer valid.

(Owner/Applicant)
