

NO: R184

COUNCIL DATE: October 3, 2022

---

## REGULAR COUNCIL

TO: **Mayor & Council**

DATE: **September 29, 2022**

FROM: **Acting General Manager,  
Planning & Development**

FILE: **0430-01**

SUBJECT: **Proposed Reconfiguration of Federal Electoral Districts**

---

## RECOMMENDATION

The Planning & Development Department recommends that Council:

1. Receive this report for information; and
2. Direct the City Clerk to forward a copy of this report, along with the related Council resolution, to the Federal Electoral Boundaries Commission as Surrey's comments regarding the *Proposal of the Federal Electoral Boundaries Commission for the Province of British Columbia* relating to proposed changes to Surrey electoral districts.

## INTENT

The intent of this report is to inform Council of the process being undertaken to reconfigure federal electoral district ("electoral district") boundaries pursuant to the *Electoral Boundaries Readjustment Act* and to identify concerns with the proposed changes.

## BACKGROUND

Federal electoral district boundaries are reconfigured every 10-years. This is done following the completion of the decennial Census, which last occurred in 2021, as is required by the Constitution of Canada. A reconfiguration of the Province's electoral district boundaries is needed to account for population growth, and in this case for the allocation of one additional federal electoral district for British Columbia. The reconfiguration is undertaken with the aim of ensuring that each electoral district's population is close as practicable to the Province's "electoral quota" of 116,300 people per electoral district.

On November 1, 2021, the 2022 Federal Electoral Boundaries Commission for the Province of British Columbia ("the Commission") was established to study and undertake the reconfiguration of electoral district boundaries. The Commission has prepared a proposal that includes recommended adjustments to the Province's electoral map, attached as Appendix "I".

## DISCUSSION

Between 2011 and 2021, British Columbia's population grew by about 600,000 people. Uneven population growth across the Province means that there is significant variance among current electoral district populations. Over the same 10-year period, Surrey alone has grown by 100,000 people.

The Commission's proposal, if adopted, would increase the number of electoral districts for Surrey from the current five to eight, as shown in Appendix "II". This significant increase is not the result of any new electoral districts being added to Surrey, as no additional districts have been added in the Lower Mainland; rather, it is the result of boundary adjustments that would combine portions of Surrey with other municipalities (or portions thereof).

### **Areas of Concern with Proposed Reconfigurations**

#### Electoral Districts Spanning Multiple Municipalities

Given growth and settlement patterns within the Lower Mainland, it is challenging to make changes to electoral boundaries that satisfy the electoral quota and that also avoid boundaries which encompass more than one municipality; however, the proposed changes cause seven of the eight proposed electoral districts in Surrey to include other municipalities, or portions thereof, along with Surrey. This includes Delta, New Westminister, Burnaby (which does not share a border with Surrey), Port Coquitlam, Pitt Meadows, Maple Ridge, Township of Langley, City of Langley, and White Rock.

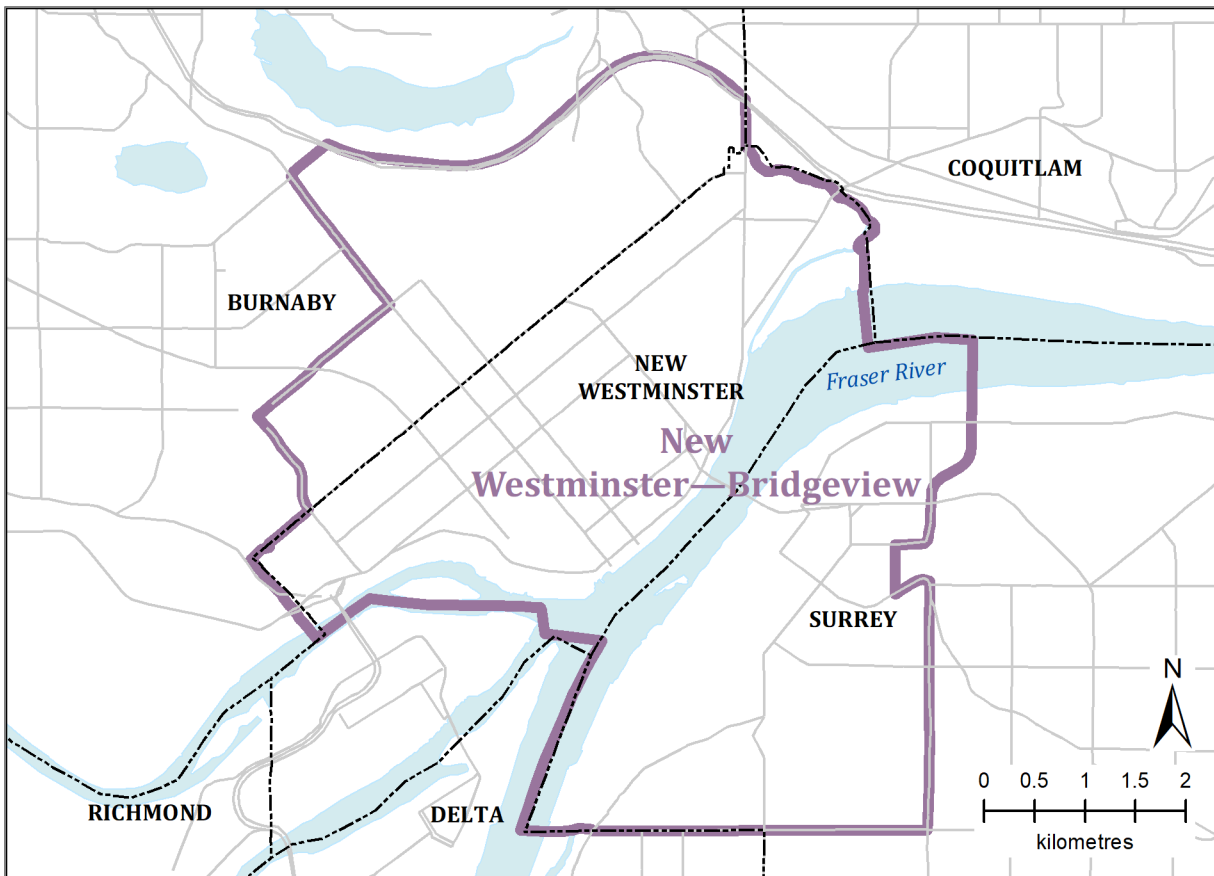
For comparison, the current electoral map, attached as Appendix "II", largely respects Surrey's municipal boundaries, with three of five electoral districts being wholly within Surrey. A fourth district, South Surrey-White Rock, respects Surrey's boundaries apart from the inclusion of White Rock, which nevertheless reflects the shared history and geography of South Surrey and its neighbour.

In a significant departure from the current electoral map, two of the proposed electoral districts for Surrey combine areas from the north side of the Fraser River. This would contravene sub-regional groupings of municipalities that are well-established in regional governance, as well as ignore community identity.

#### *Proposed New Westminister-Bridgeview Electoral District*

The proposed New Westminister-Bridgeview electoral district would combine portions of New Westminister and Burnaby with the Surrey neighbourhoods of Bridgeview, Saint Helen's Park, Royal Heights, and Cedar Hills, currently in the Surrey Centre district. The boundaries proposed by the Commission are shown on Map 1.

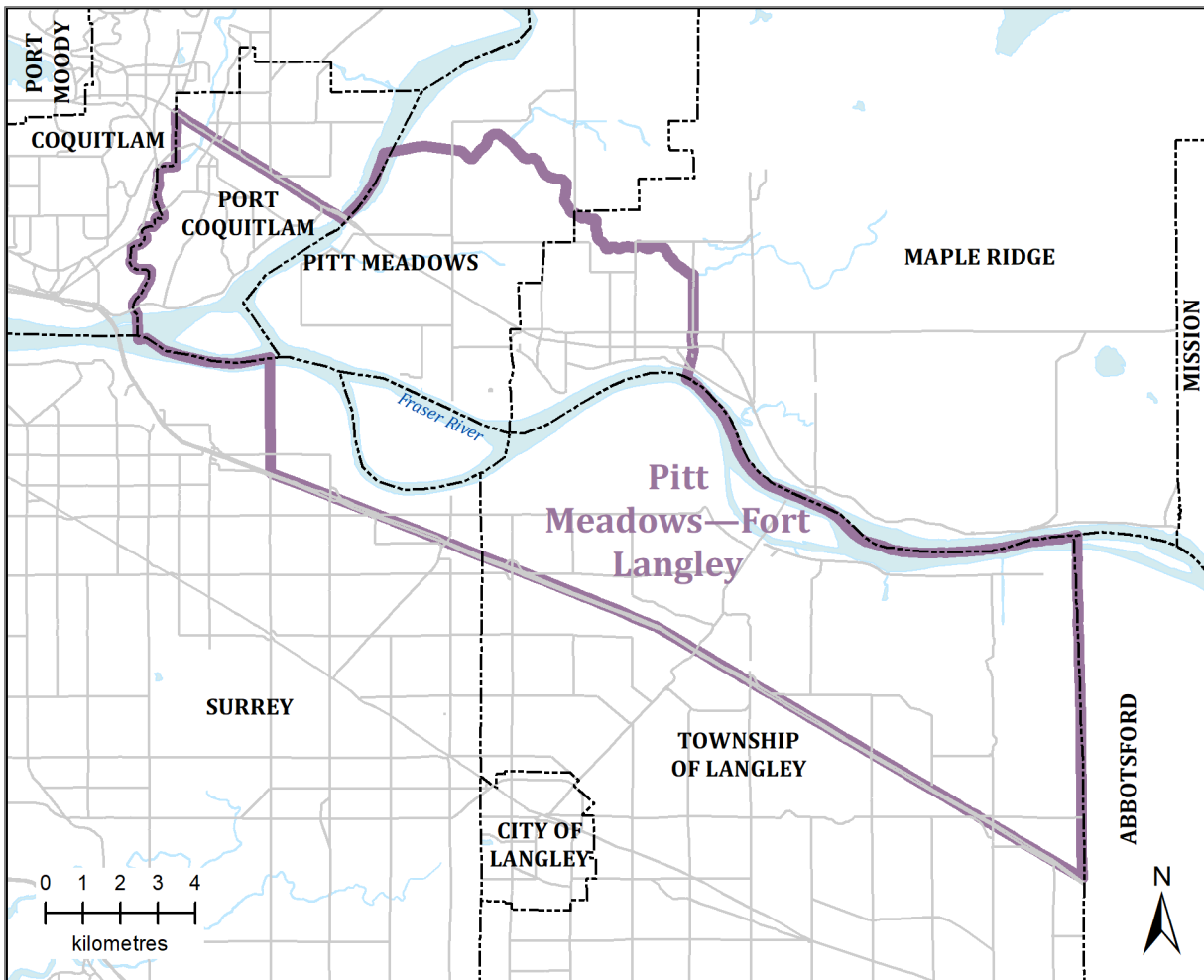
**Map 1: Proposed New Westminster-Bridgeview Electoral District**



*Proposed Pitt Meadows-Fort Langley Electoral District*

Similarly, the proposed Pitt Meadows-Fort Langley electoral district would combine the neighbourhood of Abbey Ridge with portions of four other municipalities north and south of the Fraser River, as shown on Map 2.

**Map 2: Proposed Pitt Meadows-Fort Langley Electoral District**



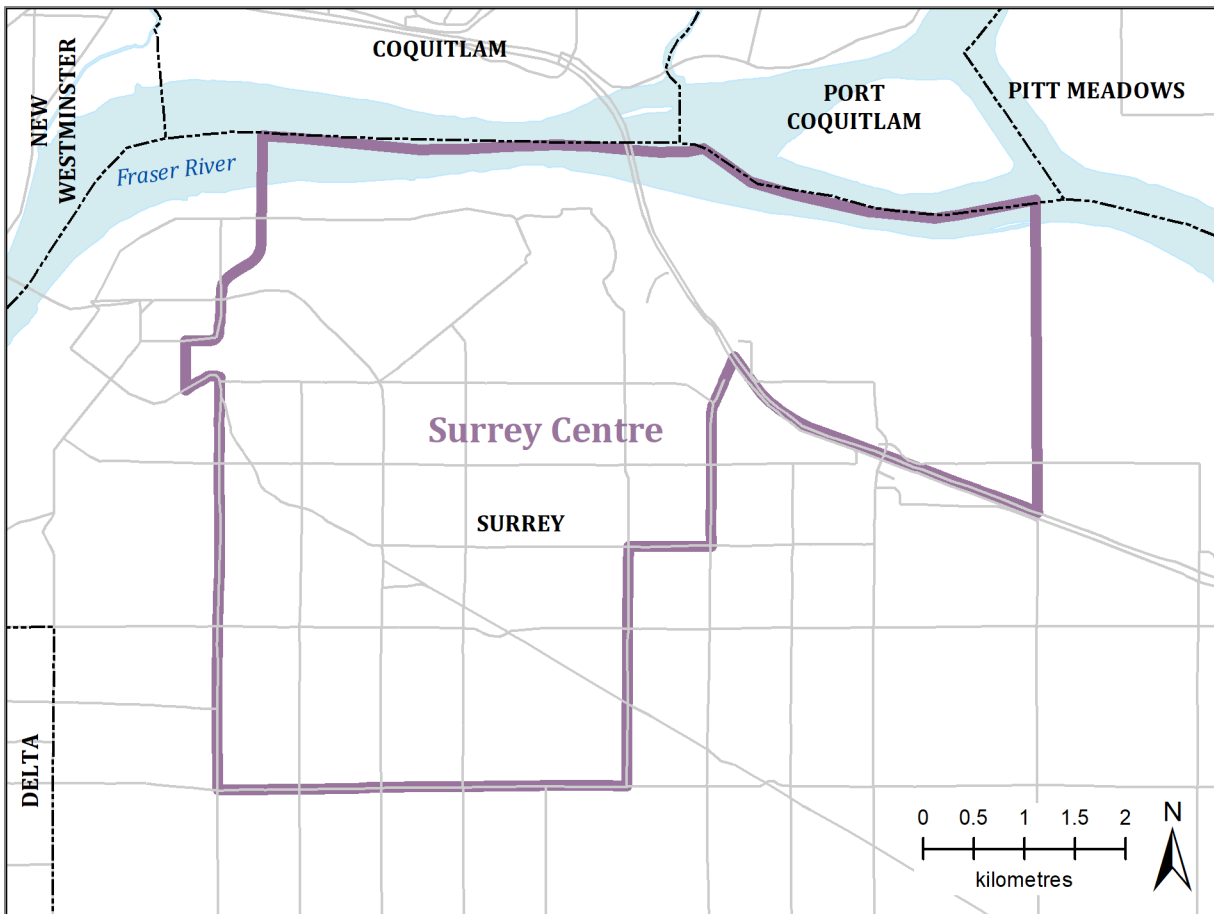
Rapid Growth and Electoral Representation

Another area of concern relates to the impact of rapid growth on electoral representation. Between 2011 and 2021, the Surrey Centre electoral district underwent dramatic growth, adding approximately 20,000 people. Based on current construction activity and the volume of development applications, it is expected that significant growth will continue over the next decade, with the potential to exceed previous growth rates.

*Proposed Surrey Centre Electoral District*

According to the Commission’s proposal, the population of the proposed Surrey Centre electoral district in 2021 was 117,698, already exceeding the electoral quota of 116,300. If growth in Surrey Centre continues as expected, its population would significantly exceed the electoral quota well in advance of the next reconfiguration in 10-years’ time. Staff are concerned that this would result in serious underrepresentation of the electorate in Surrey Centre. The boundaries proposed by the Commission for Surrey Centre are shown on Map 3.

**Map 3: Proposed Surrey Centre Electoral District**



### **Minor Adjustments to Improve Municipal Boundary Alignment**

In addition to the concerns raised above, staff believes that there is potential for better overall alignment with Surrey's municipal boundaries, which could be achieved with relatively minor revisions to several of the proposed electoral districts. The following adjustments are suggested:

1. Two proposed electoral districts (Surrey West and Delta) are each comprised of portions of Surrey and Delta. An exchange of territory between these two electoral districts would result in district boundaries that respect the shared municipal boundary of 120 Street (Scott Road). This could likely be achieved with only minor deviation from the electoral quota for each district. It would also eliminate confusion for some residents stemming from the names of the electoral districts.
2. The proposed eastern boundary of the Fleetwood-Port Kells electoral district at 200 Street could be shifted to the municipal boundary at 196 Street with little impact to district populations.
3. Surrey Bend Park, the Port Kells Industrial Area, and a small portion of Fraser Heights (Abbey Ridge) contribute relatively little population to the Pitt Meadows-Fort Langley electoral district. Reallocation of these areas to the Fleetwood-Port Kells electoral district would have only minor impacts to district populations.

## SUSTAINABILITY CONSIDERATIONS

Effective electoral representation is key to the working of Canadian democracy. The careful and considered reconfiguration of electoral districts is related to the Sustainability Charter 2.0 theme of Inclusion. Specifically, it relates to the following Desired Outcome (“DO”):

- Community Pride and Engagement DO21: All residents have opportunities to be meaningfully engaged in civic issues and to contribute to community life.

## CONCLUSION

The Commission’s proposed reconfiguration of the Province’s federal electoral districts would be significantly impactful to Surrey, both in the number of districts and their extent. In most cases, the reconfigured electoral districts would combine portions of Surrey with portions of other municipalities, including several which are located north of the Fraser River. As a result, the proposed boundaries would not effectively reflect historical patterns or represent existing communities of interest and identity. Furthermore, the proposed electoral district boundaries do not adequately address the rapid growth taking place in Surrey and its impacts on electoral representation.

*Original signed by*  
Jeff Arason, P.Eng.  
Acting General Manager, Planning & Development

JA/AD/ss

Appendix “I” Proposal of the Federal Electoral Boundaries Commission for the Province of  
British Columbia

Appendix “II” Current Federal Electoral Districts for Vancouver and Vicinity



## Proposal of the Federal Electoral Boundaries Commission for the Province of

# British Columbia

Published pursuant to the  
*Electoral Boundaries Readjustment Act*

ISBN 978-0-660-43035-5

Cat. No.: SE3-123/3-2022E-PDF

© Federal Electoral Boundaries Commission for the Province of British Columbia, 2022

All rights reserved



# Table of Contents

<b>Commentary .....</b>	<b>4</b>
Overview of the Proposed Reconfiguration.....	7
<b>Notice of Sitings.....</b>	<b>11</b>
<b>Required Advance Notice of Representation .....</b>	<b>13</b>
<b>Rules .....</b>	<b>14</b>
<b>APPENDIX – Maps, Proposed Boundaries and Names of Electoral Districts.....</b>	<b>16</b>
British Columbia .....	48
Southeastern British Columbia.....	49
Southwestern British Columbia .....	50
Vancouver Island .....	51
City of Abbotsford.....	52
City of Courtenay .....	53
City of Kamloops.....	54
City of Kelowna .....	55
City of Nanaimo.....	56
City of Penticton .....	57
City of Prince George.....	58
City of Vancouver and Vicinity .....	59
City of Victoria and Vicinity.....	60

# Commentary

The 2022 Federal Electoral Boundaries Commission for the Province of British Columbia was established as an independent commission on November 1, 2021, pursuant to the *Electoral Boundaries Readjustment Act*, R.S.C. 1985, c. E-3 (the Act) to reconfigure the boundaries of British Columbia's electoral districts for the election of members of Parliament. It is mandated to provide for **43** electoral districts, an **increase of 1** over the previous allotment.

The process of reconfiguring of electoral district boundaries is required by our Canadian constitution. This takes place every 10 years, after completion of the decennial census. The increase in electoral districts by 1 to 43 is the result of increased population in the province. The 2021 decennial census reports an increase of about 600,000 residents to a current population of 5,000,879. On the basis of 43 electoral districts, this translates into about 116,300 people per electoral district. This number is called the electoral quota.

Three members have been appointed to the Commission: Madam Justice Mary Saunders, a justice of the Court of Appeal for British Columbia; Mr. R. Kenneth Carty; and Mr. Stewart Ladyman. Both Mr. Carty and Mr. Ladyman bring impressive backgrounds and qualifications in education and matters electoral. Mr. Carty is a professor emeritus at the University of British Columbia and has served as a consultant to both provincial and federal commissions of inquiry. He was a member of the 2002 Federal Electoral Boundaries Commission for British Columbia, chaired by Mr. Justice Hutchison. Mr. Ladyman served as a member of the 2006 commission chaired by Mr. Justice Cohen that reconfigured British Columbia's provincial electoral boundaries, and as a member of the 2012 Federal Electoral Boundaries Commission for British Columbia, chaired by Mr. Justice Hall.

## The Statutory Framework

The Act provides that the population of each electoral district should correspond to the electoral quota "as close as reasonably possible" (s. 15(1)(a)). The provision is aimed at promoting equality of voting power in the spirit of "one person, one vote." The Act also recognizes that a number of other factors are important to providing effective representation, and so requires the commission to consider "the community of interest or community of identity in or the historical pattern of an electoral district in the province," as well as "a manageable geographic size for districts in sparsely populated, rural or northern regions of the province" (s. 15(1)(b)). The Act allows deviation from British Columbia's electoral quota by 25 percent or less and allows for the deviation to be greater in extraordinary circumstances (s. 15(2)).

A number of court rulings explain that “effective representation” is key for the working of Canadian democracy and recognize that perfect uniformity to the electoral quota is impossible. Geographic size, historical patterns, and communities of interest and identity play an important role in determining electoral boundaries that allow for effective representation.

## **The British Columbia Challenge**

Two features of British Columbia create particular challenges to configuring the province’s electoral boundaries. These are British Columbia’s uneven distribution of population and its varied and rugged physical geography. Population, sparse in vast tracts of the province, is concentrated and clustered in the southern parts, with highest density in the southwest corner. The varied and rugged physical geography determines the location of many electoral district boundaries.

British Columbia divides naturally into regions that cannot be easily straddled for purposes of creating electoral districts: Vancouver Island, the Lower Mainland Fraser Valley and the Interior (including in this term the northern areas and north coast). The waters between Vancouver Island and the Lower Mainland make it largely impractical to combine their territories into electoral districts, with the exception of North Island—Powell River, and the same is true of the mountains north, east and west of Hope guarding the Interior. Further, within regions, steep topography requires attention to transportation routes and geographic features that will promote, or detract from, effective representation.

## **The Census Information**

The census information received in February records significant, but uneven, population growth in the province. In some electoral districts, population has grown dramatically. In others, including some in the Lower Mainland, population has grown at a slower pace. Some of the fastest growing districts are ones that, even in 2012, were at the higher end of variance from the electoral quota, a feature compounding the effect of the last 10 years’ population growth. An established pattern of rapid growth between the North Shore and the Fraser Valley has continued. Population growth on Vancouver Island is concentrated in the southern portions and Nanaimo. Electoral districts in the Southern Interior, already on the high end, have experienced significant population growth.

## **The Proposal**

Below are our recommendations for reconfiguring British Columbia’s electoral map. These recommendations are made after considerable study of the picture of British Columbia painted by the census information. We have concluded that the growth and redistribution of the population must result in quite a few adjustments to electoral boundaries, in the interest of fairness to voters in the various electoral districts affected and effective representation.

Some of the boundary adjustments that we propose suggest renaming the electoral district to better describe it. In this report, we generally refer to the current name when describing significant adjustments, followed by the recommended name, recognizing that all of what follows is a proposal.

Our first question is the appropriate placement for the new riding. On considering the pattern of electoral district populations, it was apparent that two regions, Vancouver Island and the Southern Interior (from the Fraser Canyon to the Alberta border), would have electoral district population averages either noticeably over or under the provincial electoral quota, depending on whether they receive the new electoral district. The Lower Mainland Fraser Valley's 26 electoral districts have an average population near the provincial electoral quota without adding an electoral district. Analysis shows that the imbalance for the Southern Interior between average population per electoral district and the electoral quota, without the addition of another electoral district, is greater than the same imbalance for Vancouver Island; that is, the average under-representation of the electoral districts in the Southern Interior exceeds the average under-representation of the electoral districts on Vancouver Island. As we considered these regional effects, it became apparent that the new electoral district should be located in the Southern Interior. We propose the creation of a new electoral district in the Southern Interior between Vernon and Kelowna, to be called Vernon—Lake Country, fashioned from North Okanagan—Shuswap and Kelowna—Lake Country.

The second question is how to approach the uneven growth. Neighbouring electoral districts may not have very much room to absorb population; having significant over population in an electoral district creates significant under-representation and a degree of unfairness between its residents and those in other electoral districts.

Historical patterns and communities of interest and identity must be given great weight. Even with this in mind, we have come to the conclusion that the unbalanced effect of the population growth across the province often requires adjustments spreading out over multiple ridings in order to adequately address what was becoming a pattern of serious over- and under-representation.

In the Southern Interior, creation of the new electoral district complicates reconfiguration. Under-representation is quite widespread across the region, and the benefit of the new electoral district should be shared broadly within the constraints of topography, geography and transportation routes. The need to appropriately spread this benefit has created a cascade of boundary change proposals, with a knock-on effect from one electoral district to another.

We are also mindful that British Columbia is home to many Indigenous communities. In the interests of ensuring their proper engagement in the electoral process, we have sought to locate each of these communities within one electoral district, and we have taken the same approach to towns and cities. This has not been possible, however, for certain larger communities, for numerical reasons.

In fashioning this proposal for British Columbians, the Commission has attempted to reduce disparities between electoral districts within the regions, influenced by the factors of historical pattern and community of interest and identity, and with voter fairness and effective

representation in mind. The result has been a significant reduction in over- and under-representation.

The effect of geographic features, roads, municipal boundaries and regional district boundaries has guided our proposals for reconfiguration.

## Overview of the Proposed Reconfiguration

### i) The North

Skeena—Bulkley Valley electoral district occupies the largest territory in the province, at 327,275 square kilometres. It remains under the quota, but any alteration to its boundaries will add only to its size and exacerbate existing challenges to effective representation. We are proposing no changes to it.

The other two northerly ridings, Prince George—Peace River—Northern Rockies and Cariboo—Prince George, are affected by the cascade of changes in the Southern Interior we describe below. We are proposing reconfiguration of Cariboo—Prince George to incorporate a larger part of the Cariboo area from Kamloops—Thompson—Cariboo, and to relinquish an area of the City of Prince George to Prince George—Peace River—Northern Rockies.

### ii) Vancouver Island

On Vancouver Island, two areas have grown most quickly. Nanaimo has experienced exceptional growth and without reconfiguration stands to be under-represented to an undue level. We are proposing that its northern boundary be moved to the south and, for balance, that a portion of the City of Courtenay from Courtenay—Alberni be incorporated in North Island—Powell River, giving Courtenay two electoral districts. For like reasons, we are proposing that Saanich—Gulf Islands incorporate more of the Saanich Peninsula from Esquimalt—Saanich—Sooke. Victoria is unchanged, and we would make only modest changes to Cowichan—Malahat—Langford.

### iii) The Lower Mainland Fraser Valley

South of Burrard Inlet, the western electoral districts have experienced modest growth. We consider that the rapid growth in parts east calls for a general movement of boundaries eastward and are proposing the reconfiguration of electoral boundaries accordingly. This includes the electoral districts of Richmond, which remain, from 2012, under quota.

Looking to the North Shore, West Vancouver—Sunshine Coast—Sea to Sky Country has grown at a great pace. We are proposing reconfiguration of the three ridings of the North Shore by moving boundaries westward, and in Burnaby North—Seymour, northward.

We are proposing a number of new configurations in Burnaby, Port Moody, Coquitlam, Port Coquitlam and New Westminster in response to significant growth in population east of Burnaby, including reconfiguration of New Westminster—Burnaby by moving boundaries eastward and incorporating an area east of the Pattullo Bridge, and reconfiguration of Pitt

Meadows—Maple Ridge to incorporate an area south of the Fraser River and to extend into the Coquitlam area. We recommend that these electoral districts, newly configured, be named New Westminster—Bridgeview and Pitt Meadows—Fort Langley.

From Surrey to the eastern margin of the Fraser Valley, the population has continued to explode. In response, we are proposing considerable changes to existing boundaries. In proposing these changes, we have used the Fraser River, key roads and municipal boundaries to the extent possible to respect the historical patterns and communities of interest. The proposal for this region is detailed and is interlocking, as are the communities affected. In particular, north of the Fraser River, we are proposing to reconfigure Mission—Matsqui—Fraser Canyon to extend from the Agassiz area to Maple Ridge, bringing it entirely north of the Fraser River, and to rename it Mission—Maple Ridge to reflect its geography. This will give Maple Ridge two electoral districts. We consider that the Fraser Canyon and Hope have the location, character and history necessary to fit with electoral districts in the Southern Interior. With these features and their community of interest in transportation, along with population considerations, we are proposing that communities in the Fraser Canyon north to Clinton be incorporated into electoral districts in the Southern Interior. In conjunction, we are proposing that Hope join with communities up to the confluence of the Thompson and Fraser rivers and with Central Okanagan—Similkameen—Nicola in an electoral district newly configured and named Coquihalla, uniting the three key transportation corridors of British Columbia.

#### **iv) Southern Interior**

In the Southern Interior, we are proposing significant alterations to boundaries to accommodate the creation of the province's new additional electoral district, to be called Vernon—Lake Country. The consequent reconfigurations are complex. We are recommending the new electoral district be created from North Okanagan—Shuswap and Kelowna—Lake Country. To remedy the consequential population shortfall in North Okanagan—Shuswap, we are proposing two curative reconfigurations: the incorporation of Revelstoke from Kootenay—Columbia, and the incorporation of a portion of Kamloops—Thompson—Cariboo. To complete the reconfiguration of Kamloops—Thompson—Cariboo, we are also proposing that a portion of the Cariboo in that electoral district be incorporated into Cariboo—Prince George, an extension westward to incorporate areas from Mission—Matsqui—Fraser Canyon as far south as Lytton, and the incorporation of Logan Lake from Central Okanagan—Similkameen—Nicola. We recommend a name change for Kamloops—Thompson—Cariboo to Kamloops—Thompson—Lytton to reflect the adjusted territory.

To remedy the consequential population shortfall in Kelowna—Lake Country, we are proposing that Kelowna's city centre be incorporated into that reconfigured electoral district, from Central Okanagan—Similkameen—Nicola, and that the reconfigured electoral district be renamed Kelowna. We are proposing that Central Okanagan—Similkameen—Nicola, in turn, reconnect Summerland and Penticton by incorporating the western portion of Penticton, relinquish the Keremeos area to South Okanagan—West Kootenay, incorporate Hope from Chilliwack—Hope (to be renamed Chilliwack), and incorporate the southern portion of the Fraser Canyon from Mission—Matsqui—Fraser Canyon, bringing all three key highways, passing through Hope, into the electoral district newly named Coquihalla.

This brings the summary of changes to an end. Along with the changes described in general terms above, the detailed examination of boundaries and blocks of population have prompted many smaller changes.

In making this proposal, we have aspired to honour the principles discussed at the beginning. We recognize that the knock-on effects from adjusting for population changes and from creating a single new electoral district described here are considerable. In particular, many changes required detailed attention to boundaries to ensure individual properties were not stranded in their electoral district. We encourage members of the public to consider the detailed descriptions below, or to view the proposals in detail on our website, with this in mind.

<b>Population by Proposed Electoral District</b>		
<b>Electoral District</b>	<b>2021 Population</b>	<b>Map Number</b>
<b>Abbotsford</b>	117,561	5
<b>Burnaby North—Seymour</b>	116,426	12
<b>Burnaby South</b>	116,363	12
<b>Cariboo—Prince George</b>	117,160	1 and 11
<b>Chilliwack</b>	116,113	2 and 5
<b>Cloverdale—Langley City</b>	118,518	12
<b>Coquihalla</b>	110,820	2 and 10
<b>Coquitlam—Port Coquitlam</b>	114,901	3 and 12
<b>Courtenay—Alberni</b>	123,978	4 and 6
<b>Cowichan—Malahat—Langford</b>	123,679	3 and 4
<b>Delta</b>	117,020	12
<b>Esquimalt—Saanich—Sooke</b>	120,606	4 and 13
<b>Fleetwood—Port Kells</b>	116,776	12
<b>Kamloops—Thompson—Lytton</b>	115,082	1 and 7
<b>Kelowna</b>	109,006	2 and 8
<b>Kootenay—Columbia</b>	111,821	1 and 2
<b>Langley—Aldergrove</b>	117,066	5 and 12
<b>Mission—Maple Ridge</b>	117,178	3 and 5
<b>Nanaimo—Ladysmith</b>	121,508	4 and 9

<b>New Westminster—Bridgeview</b>	118,422	12
<b>North Island—Powell River</b>	125,964	1 and 6
<b>North Okanagan—Shuswap</b>	109,971	2 and 7
<b>North Vancouver</b>	114,310	3 and 12
<b>Pitt Meadows—Fort Langley</b>	116,538	12
<b>Port Moody—Coquitlam</b>	116,740	12
<b>Prince George—Peace River—Northern Rockies</b>	116,962	1 and 11
<b>Richmond East</b>	116,764	12
<b>Richmond West</b>	119,857	12
<b>Saanich—Gulf Islands</b>	122,147	4 and 13
<b>Skeena—Bulkley Valley</b>	89,689	1
<b>South Okanagan—West Kootenay</b>	108,971	2 and 10
<b>South Surrey—White Rock</b>	115,956	12
<b>Surrey Centre</b>	117,698	12
<b>Surrey West</b>	115,780	12
<b>Vancouver Centre</b>	115,964	12
<b>Vancouver East</b>	115,759	12
<b>Vancouver Granville</b>	117,201	12
<b>Vancouver Kingsway</b>	117,209	12
<b>Vancouver Quadra</b>	115,873	12
<b>Vancouver South</b>	117,680	12
<b>Vernon—Lake Country</b>	111,205	2 and 8
<b>Victoria</b>	123,482	13
<b>West Vancouver—Sunshine Coast—Sea to Sky Country</b>	119,155	3 and 12



# Notice of Sittings

The Commission is required by the Act to hold sittings to hear representations by interested parties about the recommended changes to the boundaries of electoral districts. For this purpose, the Commission is scheduled to sit at the following places and times:

Location	Place of hearing	Date of hearing	Time of hearing
<b>Courtenay</b>	Crown Isle Resort 399 Clubhouse Drive	Monday, June 6, 2022	7 p.m.
<b>Nanaimo</b>	Coast Bastion Hotel 11 Bastion Street	Tuesday, June 7, 2022	7 p.m.
<b>Victoria</b>	The Victoria Conference Centre 720 Douglas Street	Wednesday, June 8, 2022	7 p.m.
<b>Delta</b> (Tsawwassen)	Coast Tsawwassen Inn 1665 56 Street	Thursday, June 9, 2022	7 p.m.
<b>Penticton</b>	Penticton Trade and Convention Centre 273 Power Street	Monday, June 13, 2022	7 p.m.
<b>Kelowna</b>	Best Western Plus 2402 Highway 97 North	Tuesday, June 14, 2022	7 p.m.
<b>Vernon</b>	Okanagan Regional Library 2800 30th Avenue	Wednesday, June 15, 2022	1 p.m.
<b>Salmon Arm</b>	Prestige Harbourfront Resort 251 Harbourfront Drive	Wednesday, June 15, 2022	7 p.m.
<b>Kamloops</b>	Coast Kamloops Hotel & Conference Centre, 1250 Rogers Way	Thursday, June 16, 2022	7 p.m.
<b>Cranbrook</b>	Heritage Inn Hotel & Convention Centre 803 Cranbrook Street North	Monday, June 20, 2022	7 p.m.
<b>Prince George</b>	Coast Prince George Hotel 770 Brunswick Street	Wednesday, June 22, 2022	7 p.m.
<b>West Vancouver</b>	West Vancouver Memorial Library 1950 Marine Drive	Thursday, June 23, 2022	5:30 p.m.

<b>North Vancouver</b>	Pinnacle Hotel 138 Victory Ship Way	Monday, June 27, 2022	7 p.m.
<b>Burnaby</b>	Holiday Inn Express Metrotown 4405 Central Boulevard	Tuesday, June 28, 2022	7 p.m.
<b>Richmond</b>	Richmond Olympic Oval 6111 River Road	Monday, Sept 12, 2022	7 p.m.
<b>Surrey</b>	Sheraton Vancouver Guildford Hotel 15269 104 Avenue	Tuesday, Sept 13, 2022	2 p.m.
<b>Surrey</b>	Sheraton Vancouver Guildford Hotel 15269 104 Avenue	Tuesday, Sept 13, 2022	7 p.m.
<b>New Westminster</b>	Inn at the Quay 900 Quayside Drive	Wednesday, Sept 14, 2022	7 p.m.
<b>Vancouver</b>	Segal Centre at Harbour Centre 515 West Hastings Street	Thursday, Sept 15, 2022	2 p.m.
<b>Vancouver</b>	Segal Centre at Harbour Centre, 515 West Hastings Street	Thursday, Sept 15, 2022	7 p.m.
<b>Hope</b>	Hope and District Recreation Centre Conference Room, 1005 6th Avenue	Monday, Sept 19, 2022	1 p.m.
<b>Chilliwack</b>	Coast Hotel 45920 First Avenue	Monday, Sept 19, 2022	7 p.m.
<b>Abbotsford</b>	Sandman Hotel 32720 Simon Avenue	Tuesday, Sept 20, 2022	7 p.m.
<b>Pitt Meadows</b>	Meadow Gardens Golf Club 9675 Meadow Gardens Way	Wednesday, Sept 21, 2022	7 p.m.
<b>Langley</b>	Coast Langley City Hotel & Convention Centre, 20393 Fraser Highway	Thursday, Sept 22, 2022	7 p.m.
<b>Coquitlam</b>	Coquitlam Public Library 1169 Pinetree Way	Tuesday, Sept 27, 2022	7 p.m.
<b>Virtual Hearing</b>	The link will be provided to participants	Wednesday, Sept 28, 2022	7 p.m.

# Required Advance Notice of Representation

Anyone wishing to make a representation at a sitting of the Commission must give notice in writing to the Secretary of the Commission **no later than one week prior to the hearing** at which the person wishes to make the representation. The notice must state the name and address of the person who will make the representation and indicate concisely the nature of the representation and the interest of such person. A person may make a written submission without necessarily appearing at a public hearing.

Notices, submissions and correspondence shall be addressed to:

Secretary  
Federal Electoral Boundaries Commission for British Columbia  
1055 West Hastings Street, Suite 300  
Vancouver, BC V6E 2E9

E-mail: [BC-CB@redecoupage-federal-redistribution.ca](mailto:BC-CB@redecoupage-federal-redistribution.ca)

Toll-free telephone: 1-855-747-7236

TTY: 1-800-361-8935

Notices and submissions may also be sent electronically by filling out the *Public Hearing Notice Form* online or by using the Interactive Mapping Tool at [www.redecoupage-redistribution-2022.ca](http://www.redecoupage-redistribution-2022.ca) (click on “The commissions,” select “British Columbia” and then click on “Public participation”).

Those who wish to make a representation should consult the rules below.

# Rules

1. These rules may be cited as “The Rules of the Federal Electoral Boundaries Commission for British Columbia, 2022.”
2. In these rules:
  - a. “Act” means the *Electoral Boundaries Readjustment Act* (R.S.C. 1985, c. E-3);
  - b. “advertisement” means an advertisement published by the Commission pursuant to subsection 19(2) of the Act;
  - c. “Commission” means the Federal Electoral Boundaries Commission for the Province of British Columbia established following the 2021 decennial census;
  - d. “notice of intention to make a representation” means notice in writing given to the Secretary pursuant to subsection 19(5) of the Act;
  - e. “Secretary” means the Secretary of the Commission;
  - f. “sitting” means a sitting held for the hearing of representations in accordance with section 19 of the Act, and shall include a hearing by way of Internet communications.
3. Only one person shall be heard in the presentation of any single representation at a sitting unless the Commission, in its discretion, decides otherwise.
4. A person giving notice of intention to make a representation shall state in the notice at which of the places, named in the advertisement as a place of sitting, he or she wishes the representation to be heard. If no such notice is given, the Secretary shall ascertain from such person the hearing at which he or she wishes to make a representation. The Commission may in its discretion hear a representation even if previous notice has not been given.
5. If no notice of intention has been submitted at a place, or in the case of a proposed hearing by way of Internet communication, the Commission may cancel the hearing at such place or by such means, provided that the Commission shall hold at least one sitting for purposes of representation, in accordance with section 19 of the Act.
6. Two members of the Commission shall constitute a quorum for the holding of a sitting.

7. If a quorum cannot be present at a place of sitting on the date set out by the advertisement, the Commission may postpone that sitting to a later date.
  - a. In the event of the cancellation or postponement of a sitting, the Secretary shall notify any person who has given notice of intention to make a representation, and who has not been heard, that the sitting has been cancelled or postponed.
  - b. The Commission, in the event of a cancellation or postponement of a sitting, shall give public notice of such postponement or cancellation by such means as the Commission considers adequate in the circumstances.
8. If it appears at a sitting of the Commission that the Commission cannot complete hearing representations within the time allowed, the Commission may adjourn the sitting to a later date at the same place or may, taking into account the convenience of persons whose representations have not been heard or have been only partly heard, adjourn the sitting to a sitting elsewhere.
9. Notwithstanding anything contained in these rules, a person who has given notice of intention to make a representation where the Commission will sit for the hearing of representations may, with the consent of the Commission, be heard at another sitting designated as a place of sitting.
10. At each hearing the Commission shall decide the order in which the representations are heard.
11. Any person wishing to make a representation to the Commission shall advise the Secretary in writing, by one week prior to the hearing at which the person wishes to make the representation, of the official language of preference that person wishes to use and any need for accommodation he or she may have.
12. The Commission will hold one virtual public hearing. In addition to the principles to be applied to in-person public hearings the following procedures and requirements apply to the virtual public hearing:
  - a. the link to the virtual public hearing will be made available only to participants and observers who have registered with the commission and to members of the media;
  - b. participants will have the option to share their screen;
  - c. the video feed from the presenters is optional and they may simply participate by phone.

# APPENDIX – Maps, Proposed Boundaries and Names of Electoral Districts

There shall be in the Province of British Columbia forty-three (43) electoral districts, named and described as follows, each of which shall return one member.

In the following descriptions:

(a) any reference to "road," "highway," "boulevard," "street," "avenue," "drive," "way," "viaduct," "railway," "strait," "channel," "inlet," "bay," "arm," "lake," "creek," "reach," "sound," "passage" or "river" signifies the centre line unless otherwise described;

(b) wherever a word or expression is used to denote a municipal area, a land district or a regional district, such word or expression shall indicate the territorial division as it existed or was bounded on the first day of January 2021;

(c) all cities, towns, villages, district municipalities and Indian reserves lying within the perimeter of the electoral district are included unless otherwise described;

(d) all First Nation territories lying within the perimeter of the electoral district are included unless otherwise described; and

(e) the translation of the terms "street," "avenue" and "boulevard" follows Treasury Board standards, while the translation of all other public thoroughfare designations is based on commonly used terms but has no official recognition.

The population figure of each electoral district is derived from the 2021 decennial census.

---

## Abbotsford

(Population: 117,561)  
(Map 5)

Consists of those parts of the Fraser Valley Regional District comprising:

(a) that part of Fraser Valley Electoral Area G lying southerly of the Fraser River and westerly of the Sumas River; and

(b) that part of the City of Abbotsford commencing at the northwest corner of Matsqui Main Indian Reserve No. 2; thence southerly along the boundary of said reserve to Harris Road; thence southeasterly along said road to Bates Road; thence southerly, westerly and southerly along said road to Olund Road; thence westerly along said road to Townline Road; thence southerly along said road and its production to the Trans-Canada Highway (Highway 1); thence southeasterly, easterly and northeasterly along said highway to the Sumas River; thence generally northeasterly and westerly along said river to the Fraser River; thence generally westerly, southwesterly and northwesterly along said river to the point of commencement.

---

## Burnaby North—Seymour

(Population: 116,426)  
(Map 12)

Consists of those parts of the Metro Vancouver Regional District comprising:

(a) that part of the City of Burnaby lying northerly and westerly of a line described as follows: commencing at the intersection of the westerly limit of the City of Burnaby with Highway 7 (Lougheed Highway); thence easterly along said highway to Lake City Way; thence northerly along said way, Arden Avenue and Greystone Drive to a transmission line at approximate latitude 49°16'03"N and longitude 122°56'14"W; thence generally northerly along said transmission line to Burnaby Mountain Parkway; thence easterly along said parkway to Gaglardi Way; thence generally southeasterly along said way to Broadway; thence easterly along Broadway to the easterly limit of said city;

(b) that part of the District Municipality of North Vancouver lying easterly of a line described as follows: commencing at the intersection of the northerly limit of the District Municipality of North Vancouver with Lynn Creek; thence generally southerly along said creek to a point at approximate latitude 49°22'12"N and longitude 123°02'06"W; thence southerly in a straight line to a point on Mountain Highway at an approximate latitude 49°21'30"N and longitude 123°02'07"W; thence southerly along said highway to Lynn Valley Road; thence southwesterly along said road to the westerly limit of said district municipality; thence southerly, easterly, southerly and westerly along said district municipality to the Trans-Canada Highway (Highway 1); thence southeasterly along said highway to Lynn Creek; thence generally southerly along said creek to the westerly limit of said district municipality; thence southerly along said limit to the southerly limit of said district municipality; and

(c) that part of the City of North Vancouver lying northeasterly of the Trans-Canada Highway (Highway 1).

---

## Burnaby South

(Population: 116,363)  
(Map 12)

Consists of that part of the Metro Vancouver Regional District comprising that part of the City of Burnaby described as follows: commencing at the intersection of the westerly limit of said city with Lougheed Highway (Highway 7); thence southerly along said limit to Moscrop Street; thence easterly along said street to Willingdon Avenue; thence southerly, southwesterly and southerly along said avenue, Willingdon Extension and Patterson Avenue to Rumble Street; thence westerly along said street to the westerly limit of the City of Burnaby; thence southerly, southeasterly, northeasterly, northwesterly and northeasterly along the limit of said city to Griffiths Drive; thence generally northwesterly along said drive to Edmonds Street; thence northeasterly along said street to Canada Way; thence northwesterly along said way to Burris Street; thence northeasterly along said street and its production to the Trans-Canada Highway (Highway 1); thence generally easterly along said highway to North Road; thence northerly along said road to the Lougheed Highway (Highway 7); thence generally northwesterly along said highway to the point of commencement.

---

## Cariboo—Prince George

(Population: 117,160)  
(Map 1 and 11)

### Consists of:

- (a) those parts of the Fraser–Fort George Regional District comprising:
- (i) that part of the City of Prince George lying southerly and westerly of a line described as follows: commencing at the intersection of the westerly limit of said city with the Nechako River; thence generally southeasterly along said river to the Cariboo Highway (Highway 97); thence southerly and southeasterly along said highway to the Fraser River; thence generally southerly along said river to the southerly limit of the City of Prince George;
  - (ii) Fraser–Fort George electoral areas C and E;
- (b) those parts of the Bulkley-Nechako Regional District comprising:
- (i) Bulkley-Nechako Electoral Area F;
  - (ii) the District Municipality of Vanderhoof; and
- (c) the Cariboo Regional District.



---

## Chilliwack

(Population: 116,113)

(Map 2 and 5)

Consists of that part of the Fraser Valley Regional District commencing at the intersection of the production of Gladwin Road and the southern boundary of the Province of British Columbia; thence northerly along said road and its production to the Trans-Canada Highway (Highway 1); thence easterly and northeasterly along said highway to the Sumas River; thence generally northeasterly and northwesterly along said river to the confluence with the Fraser River; thence generally northeasterly along said river to a point along the shore of said river at approximate latitude 49°22'22"N and longitude 121°26'47"W; thence easterly in a straight line to the Crowsnest Highway (Highway 3) at approximate latitude 49°22'23"N and longitude 121°26'30"W; thence southeasterly and southerly along said highway to a point at approximate latitude 49°18'29"N and longitude 121°16'05"W; thence southerly in a straight line to a point at approximate latitude 49°15'24"N and longitude 121°15'58"W; thence easterly in a straight line to a point at approximate latitude 49°15'40"N and longitude 121°11'54"W at the Crowsnest Highway (Highway 3); thence generally southeasterly along said highway to the easterly limit of the Fraser Valley Regional District; thence generally southwesterly and southeasterly along said limit to the southern boundary of the Province of British Columbia; thence westerly along said boundary to the point of commencement.

---

## Cloverdale—Langley City

(Population: 118,518)

(Map 12)

Consists of those parts of the Metro Vancouver Regional District comprising:

(a) the City of Langley;

(b) that part of the Corporation of the Township of Langley bounded as follows: commencing at the intersection of the westerly limit of said township with 72 Avenue; thence easterly along said avenue to 200 Street; thence southerly along said street to the northerly limit of the City of Langley at 62 Avenue; thence generally westerly along said city limit to the westerly limit of the Corporation of the Township of Langley; thence northerly along said limit to the point of commencement; and

(c) that part of the City of Surrey described as follows: commencing at the intersection of the easterly limit of said city with 56 Avenue; thence westerly and southwesterly along said avenue to 192 Street; thence northerly along said street to 56 Avenue; thence westerly along said avenue to 144 Street; thence northerly along said street to 64 Avenue; thence easterly along said avenue to 152 Street; thence northerly along said street to 68 Avenue; thence easterly along said avenue and its production to the Serpentine River; thence generally northeasterly along said river to the Fraser Highway; thence southeasterly along said highway to the intersection with the production of 72 Avenue; thence easterly along said production and

avenue to the eastern limit of the City of Surrey; thence southerly along said city limit to the point of commencement.

---

## Coquihalla

(Population: 110,820)  
(Map 2 and 10)

### Consists of:

- (a) those parts of the Regional District of Central Okanagan comprising:
- (i) the City of West Kelowna;
  - (ii) the District Municipality of Peachland;
  - (iii) the Regional District Electoral Area of Central Okanagan West;
- (b) those parts of the Regional District of Okanagan-Similkameen comprising:
- (i) the District Municipality of Summerland;
  - (ii) the Town of Princeton;
  - (iii) Okanagan-Similkameen electoral areas F and H;
  - (iv) that part of Okanagan-Similkameen Electoral Area I lying northerly and westerly of a line described as follows: commencing at the intersection of the southerly boundary of Keremeos Forks Indian Reserve No. 12 & 12A and Highway 3A; thence northeasterly along said highway to the intersection of said highway with the south boundary of Penticton Indian Reserve No. 1;
  - (v) those parts of Okanagan-Similkameen Electoral Area G lying northerly and westerly of a line described as follows:  
  
commencing at the intersection of the limit of Okanagan-Similkameen Electoral Area G (being the southerly boundary of Keremeos Forks Indian Reserve No. 12 & 12A) and Highway 3A; thence southerly along said highway to a point located at approximate latitude 49°16'09"N and longitude 119°49'49"W; thence easterly in a straight line from said point to Keremeos Creek (approximate latitude 49°16'10"N and longitude 119°49'34"W); thence generally southerly along said creek to a point located at approximate latitude 49°15'27"N and longitude 119°49'39"W; thence westerly in a straight line to Highway 3A; thence southerly along said highway to Keremeos Bypass Road; thence generally southwesterly along said road to Crowsnest Highway (Highway 3); thence westerly along said highway to Ashnola Road; thence westerly and northwesterly along said road to the easterly boundary of Ashnola Indian Reserve No. 10; thence southerly along said easterly boundary to the southerly boundary of said reserve; thence generally westerly along the southerly boundary of said reserve to longitude 120°00'00"W; thence southerly along said meridian of longitude to the southerly limit of Okanagan-Similkameen Electoral Area G at latitude 49°00'00"N;

(vi) that part of the City of Penticton lying westerly of a line described as follows:

commencing at the northwesterly limit of said city at the production of Martin Street; thence southerly along said production to Martin Street; thence southerly along said street to Lakeshore Drive West; thence easterly along Lakeshore Drive West to Main Street; thence southerly along said street to Skaha Lake Road; thence southwesterly and southerly along said road to Lee Avenue; thence easterly along said avenue to Parkview Street; thence southerly along said street and its production to Skaha Lake;

(vii) Penticton Indian Reserve No. 1;

(c) those parts of the Thompson-Nicola Regional District comprising:

(i) the City of Merritt;

(ii) Thompson-Nicola Electoral Area N (Beautiful Nicola Valley-South);

(iii) Thompson-Nicola Electoral Area M (Beautiful Nicola Valley-North) excepting that part lying northwesterly of the Merritt-to-Kamloops Highway (Highway 5A) between the limits of Thompson-Nicola Electoral Area L (Grasslands), said limits having approximate longitudes of 120°20'06"W and 120°19'41"W;

(iv) that part of Thompson-Nicola Electoral Area L (Grasslands) commencing at the southwesterly corner of said electoral area; thence northeasterly along the Merritt-to-Kamloops Highway (Highway 5A) to the limit of said electoral area; thence southerly to the southerly limit of said electoral area; thence westerly to the point of commencement; and

(d) those parts of the Fraser Valley Regional District comprising:

(i) that part of the District of Hope lying northerly and easterly of a line described as follows: commencing at the intersection of the southeasterly limit of said district and the Crowsnest Highway (Highway 3); thence generally westerly along said highway to Water Avenue; thence westerly in a straight line to a point at the Fraser River at approximate latitude 49°22'19"N and longitude 121°27'31"W; thence westerly along said river to the limit of said district;

(ii) those parts of Fraser Valley Electoral Area B lying northerly and easterly of a line described as follows:

commencing at the intersection of the southeasterly limit of Fraser Valley Electoral Area B and the Crowsnest Highway (Highway 3); thence generally northwesterly, southerly and northwesterly along said highway to latitude 49°15'40"N and longitude 121°11'54"W; thence westerly in a straight line to latitude 49°15'24"N and longitude 121°15'58"W; thence northerly in a straight line to a point on the Crowsnest Highway (Highway 3) at approximate latitude 49°18'29"N and longitude 121°16'05"W; thence northwesterly along said highway to the southerly limit of the District Municipality of Hope;

- (iii) those parts of Fraser Valley Electoral Area A and Fraser Valley Electoral Area B lying easterly of a line described as follows: commencing at the northwest corner of the District of Hope at approximate latitude 49°22'56"N and longitude 121°30'12"W; thence northerly in a straight line to the intersection of the Canadian Pacific Railway and the northerly limit of Fraser Valley Electoral Area A.

---

## Coquitlam—Port Coquitlam

(Population: 114,901)  
(Map 3 and 12)

Consists of those parts of the Metro Vancouver Regional District comprising:

(a) that part of the City of Port Coquitlam lying northeasterly of the Lougheed Highway (Highway 7);

(b) that part of Metro Vancouver Electoral Area A lying easterly of Indian Arm and the Indian River; and

(c) those parts of the City of Coquitlam:

- (i) lying northerly of the Lougheed Highway (Highway 7) and the Barnet Highway (Highway 7A);
- (ii) lying southerly of the Barnet Highway (Highway 7A) and the Lougheed Highway (Highway 7) commencing at the intersection of the Lougheed Highway (Highway 7) and the westerly limit of the City of Port Coquitlam; thence generally southerly along said limit to the northerly boundary of the Coquitlam Indian Reserve No. 2; thence generally southerly along said limit and along the westerly limit of the City of Port Coquitlam to the Fraser River; thence westerly along said river to the Trans-Canada Highway (Highway 1); thence northerly along said highway to the northerly shore of the Fraser River at approximate latitude 49°13'27"N and longitude 122°48'53"W; thence northerly in a straight line to the Canadian Pacific Railway at approximate latitude 49°13'39"N and longitude 122°48'57"W; thence northerly and northeasterly along said railway to Colony Farm Road; thence northwesterly along said road to Cape Horn Avenue; thence northwesterly in a straight line to a point on Fern Terrace at approximate latitude 49°14'29"N and longitude 122°49'00"W; thence northwesterly along said road to Mariner Way; thence northeasterly and northerly along said road to Como Lake Avenue; thence westerly along said avenue to approximate latitude 49°15'47"N and longitude 122°49'07"W; thence northerly in a straight line to approximate latitude 49°16'20"N and longitude 122°49'10"W; thence northeasterly in a straight line to a point on a transmission line at approximate latitude 49°16'25"N and longitude 122°48'57"W; thence northerly along said transmission line to the Canadian Pacific Railway; thence westerly along said railway to the limit of the City of Coquitlam; thence northerly along said limit to the Barnet Highway (Highway 7A); thence easterly and southeasterly along said highway to the point of commencement.

---

## Courtenay—Alberni

(Population: 123,978)

(Map 4 and 6)

### Consists of:

- (a) the Regional District of Alberni-Clayoquot;
- (b) those parts of the Regional District of Comox Valley comprising:
  - (i) the Village of Cumberland;
  - (ii) Comox Valley Electoral Area A;
  - (iii) that part of the City of Courtenay lying westerly of the Courtenay River and southerly of the Puntledge River, excluding that part lying southwesterly of Arden Road;
- (c) that part of the qathet Regional District comprising qathet Electoral Area E; and
- (d) those parts of the Regional District of Nanaimo comprising:
  - (i) the Town of Qualicum Beach;
  - (ii) the City of Parksville;
  - (iii) Nanaimo electoral areas E, F, G and H;
  - (iv) that part of Nanaimo Electoral Area C lying northerly and westerly of a line described as follows: commencing at the intersection of the limit of Nanaimo Electoral Area C and Biggs Road; thence generally westerly along said road and Weigles Road to a point on the southerly production of the northerly limit of Nanaimo Electoral Area C at approximate latitude 49°11'57"N and longitude 124°04'55"W; thence northerly along said extension to said limit;
  - (v) the District Municipality of Lantzville;
  - (vi) that part of the City of Nanaimo lying northerly and westerly of a line described as follows: commencing at a point on the shore of the Strait of Georgia in front of Sealand Park at approximate latitude 49°14'35"N and longitude 124°01'07"W; thence southwesterly in a straight line to the easterly end point of Waldbank Road; thence southerly in a straight line to the intersection of Sunset Road and Sealand Road; thence southerly along Sealand Road to Hammond Bay Road; thence westerly along said road and Aulds Road to Nanaimo Parkway; thence generally southerly along said parkway to Mostar Road; thence southerly along said road to Biggs Road; thence generally westerly along said road to the westerly limit of the City of Nanaimo.

## Cowichan—Malahat—Langford

(Population: 123,679)

(Map 3 and 4)

### Consists of:

(a) those parts of the Regional District of Cowichan Valley comprising:

- (i) the City of Duncan;
- (ii) the Town of Lake Cowichan;
- (iii) District Municipality of North Cowichan;
- (iv) Cowichan Valley electoral areas A, B, C, D, E, F and I;
- (v) that part of Cowichan Valley Electoral Area G comprising: Dayman Island, Hudson Island, Leech Island, Miami Islet, Penelakut Island, Ragged Islets, Reid Island, Rose Islets, Scott Island, Tent Island and Thetis Island; and

(b) those parts of the Capital Regional District comprising:

- (i) the District Municipality of Highlands;
- (ii) those parts of the City of Langford described as follows:
  - a. that part lying northerly and westerly of a line described as follows: commencing at the intersection of the limit for the City of Langford with Veterans Memorial Parkway; thence northeasterly along said parkway to Goldstream Avenue; thence easterly along said avenue to the easterly limit of said city;
  - b. that part lying northerly and easterly of a line described as follows: commencing on the corner of the southerly limit of said city located easterly of Sooke Road at approximate latitude 48°25'22"N and longitude 123°33'53"W; thence easterly in a straight line to a point at approximate latitude 48°25'10"N and longitude 123°33'09"W; thence easterly in a straight line to a point at approximate latitude 48°24'56"N and longitude 123°32'27"W; thence southerly in a straight line to a point at approximate latitude 48°24'49"N and longitude 123°32'29"W; thence southerly in a straight line to a corner of the southerly limit of said city located westerly of Happy Valley Road at approximate latitude 48°24'33"N and longitude 123°32'37"W;
- (iii) those parts of Capital Electoral Area Juan de Fuca (Part 1) described as follows:
  - a. that part lying northerly of the district municipalities of Sooke and Metchosin and westerly of Squally Reach;
  - b. that part surrounded by Langford City;
- (iv) Capital Electoral Area Juan de Fuca (Part 2).

---

## Delta

(Population: 117,020)  
(Map 12)

Consists of those parts of the Metro Vancouver Regional District comprising:

- (a) that part of the City of Delta lying westerly and southerly of Highway 99;
- (b) that part of the City of Delta bounded as follows: commencing at the intersection of Highway 99 and South Fraser Perimeter Road; thence northerly, northeasterly and easterly along said road to Highway 91 Connector; thence southeasterly along said connector to Nordel Way; thence southerly and easterly along Nordel Way to Highway 91; thence southerly along said highway to 72 Avenue; thence easterly along said avenue to the easterly limit of the City of Delta; thence southerly along said easterly limit to Highway 99; thence westerly along said highway to the point of commencement; and
- (c) that part of the City of Surrey commencing at the intersection of the limit for said city and 72 Avenue; thence easterly along said avenue to King George Boulevard; thence southerly and southeasterly along said boulevard to the British Columbia Railway; thence westerly along said railway to the westerly limit of the City of Surrey; thence northerly along the limit of said city to the point of commencement.

---

## Esquimalt—Saanich—Sooke

(Population: 120,606)  
(Map 4 and 13)

Consists of those parts of the Capital Regional District comprising:

- (a) the district municipalities of Esquimalt, Metchosin and Sooke;
- (b) the City of Colwood;
- (c) those parts of the City of Langford described as follows:
  - (i) that part lying southerly and westerly of a line described as follows: commencing on the corner of the southerly limit of said city located easterly of Sooke Road at approximate latitude 48°25'22"N and longitude 123°33'53"W; thence easterly in a straight line to a point at approximate latitude 48°25'10"N and longitude 123°33'09"W; thence easterly in a straight line to a point at approximate latitude 48°24'56"N and longitude 123°32'27"W; thence southerly in a straight line to a point at approximate latitude 48°24'49"N and longitude 123°32'29"W; thence southerly in a straight line to a corner of the southerly limit of said city located westerly of Happy Valley Road at approximate latitude 48°24'33"N and longitude 123°32'37"W;

(ii) that part lying easterly and southerly of a line described as follows: commencing at the intersection of the limit of the City of Langford with Veterans Memorial Parkway; thence northeasterly along said parkway to Goldstream Avenue; thence easterly along said avenue to the easterly limit of said city;

(d) the Town of View Royal;

(e) those parts of the Regional District Electoral Area of Juan de Fuca (Part 1) described as follows:

- (i) that part lying easterly of the centre of Squally Reach and northerly of the district municipalities of Highlands and Saanich;
- (ii) that part lying southerly of the district municipalities of Sooke and Metchosin and westerly of a line described as follows: commencing at the southerly intersection of the easterly limit of the District Municipality of Esquimalt with the westerly limit of the City of Victoria; thence southerly along the westerly limit of said city to the southwesternmost point of said limit located westerly of Ogden Point; thence southerly in a straight line to the limit of said regional district electoral area at approximate latitude 48°15'00"N and longitude 123°25'49"W;

(iii) that part lying westerly of the District Municipality of Sooke; and

(f) that part of the District Municipality of Saanich lying westerly of a line described as follows: commencing at the intersection of the northerly limit of said district municipality with Wallace Drive; thence generally southerly along said drive to West Saanich Road; thence generally southeasterly along said road to Quadra Street; thence southeasterly along said street to Patricia Bay Highway; thence southerly along said highway to McKenzie Avenue; thence easterly along said avenue to Quadra Street; thence generally southerly along said street to Cook Street; thence southeasterly along said street to the southerly limit of the District Municipality of Saanich.

---

## Fleetwood—Port Kells

(Population: 116,776)

(Map 12)

Consists of those parts of the Metro Vancouver Regional District comprising those parts of the Township of Langley and the City of Surrey described as follows: commencing at the intersection of the Trans-Canada Highway (Highway 1) and 200 Street; thence southerly along said street to 72 Avenue; thence westerly along said avenue to its production to the Fraser Highway; thence northwesterly along said highway to the Serpentine River; thence generally southwesterly along said river to the intersection with the production of 68 Avenue; thence westerly in a straight line along said production to 68 Avenue; thence westerly along said avenue to 152 Street; thence southerly along said street to 64 Avenue; thence westerly along said avenue to 144 Street; thence northerly along said street to 88 Avenue; thence easterly along said avenue to 148 Street; thence northerly along said street to 100 Avenue; thence



easterly along said avenue to 152 Street; thence generally northerly along said street to the Trans-Canada Highway (Highway 1); thence generally southeasterly along said highway to the point of commencement.

## Kamloops—Thompson—Lytton

(Population: 115,082)

(Map 1 and 7)

### Consists of:

(a) those parts of the Thompson-Nicola Regional District comprising:

- (i) Thompson-Nicola electoral areas A (Wells Gray Country), B (Thompson Headwaters), E (Bonaparte Plateau), I (Blue Sky Country), O (Lower North Thompson) and J (Copper Desert Country);
- (ii) the district municipalities of Clearwater, Barriere and Logan Lake;
- (iii) the villages of Clinton, Lytton, Cache Creek and Ashcroft;
- (iv) the resort municipality of Sun Peaks Mountain;
- (v) Kamloops Indian Reserve No. 1;
- (vi) that part of Thompson-Nicola Electoral Area P (Rivers and the Peaks) lying westerly of a line described as follows: commencing at the southerly corner of Thompson-Nicola Electoral Area O (Lower North Thompson) at approximate latitude  $50^{\circ}55'29''\text{N}$  and longitude  $119^{\circ}48'16''\text{W}$ ; thence southerly in a straight line to a point at approximate latitude  $50^{\circ}45'24''\text{N}$  and longitude  $119^{\circ}48'04''\text{W}$ ; thence southeasterly in a straight line to the South Thompson River at approximate latitude  $50^{\circ}44'23''\text{N}$  and longitude  $119^{\circ}45'48''\text{W}$ ;
- (vii) those parts of the City of Kamloops comprising:
  - a. that portion of said city lying westerly of a line described as follows: commencing at the intersection of the South Thompson River and Highway 5 (Southern Yellowhead Highway); thence generally southwesterly along said highway and the Trans-Canada Highway (Highway 1) to Peterson Creek; thence generally southerly along said creek to a point at approximate latitude  $50^{\circ}38'38''\text{N}$  and longitude  $120^{\circ}19'56''\text{W}$ ; thence westerly in a straight line to a point at approximate latitude  $50^{\circ}38'38''\text{N}$  and longitude  $120^{\circ}20'07''\text{W}$ ; thence southwesterly to a point at approximate latitude  $50^{\circ}38'35''\text{N}$  and longitude  $120^{\circ}20'10''\text{W}$ ; thence northwesterly to a point at approximate latitude  $50^{\circ}38'38''\text{N}$  and longitude  $120^{\circ}20'13''\text{W}$ ; thence westerly in a straight line to the Princeton-Kamloops Highway (Highway 5A) at approximate latitude  $50^{\circ}38'38''\text{N}$  and longitude  $120^{\circ}21'11''\text{W}$ ; thence southeasterly along said highway to a point at approximate latitude  $50^{\circ}37'46''\text{N}$  and longitude  $120^{\circ}20'12''\text{W}$ ; thence southerly in a straight line to a point at approximate latitude  $50^{\circ}37'22''\text{N}$  and longitude  $120^{\circ}20'08''\text{W}$ ; thence easterly in a straight line to the Princeton-Kamloops Highway (Highway 5A) at approximate latitude  $50^{\circ}37'24''\text{N}$

- and 120°19'40"W; thence easterly and southerly along said highway to the southerly limit of the City of Kamloops;
- b. all those portions of said city lying northerly of the South Thompson and Thompson Rivers;
- (viii) that part of Thompson-Nicola Electoral Area L (Grasslands) lying westerly of the Princeton-Kamloops Highway (Highway 5A);
  - (ix) that part of Thompson-Nicola Electoral Area M (Beautiful Nicola Valley-North) lying northwesterly of the Merritt-Kamloops Highway (Highway 5A) between the limits of Electoral Area L (Grasslands), with said limits having approximate longitudes of 120°20'06"W and 120°19'41"W; and
- (b) those parts of the Squamish-Lillooet Regional District comprising:
- (i) Squamish-Lillooet electoral areas A and B;
  - (ii) the District Municipality of Lillooet.

## Kelowna

(Population: 109,006)  
(Map 2 and 8)

Consists of those parts of the Regional District of Central Okanagan comprising:

- (a) Central Okanagan East Electoral Area;
- (b) that part of the District Municipality of Lake Country lying easterly of a line described as follows: commencing at the intersection of the southerly limit of said district municipality and Highway 97 (Highway 97 North); thence northerly and northwesterly along said highway to the production of Pretty Road (approximate latitude 50°03'18"N and longitude 119°24'32"W); thence easterly along said production in a straight line to Wood Lake; thence generally northerly along said lake to the north shore of said lake at approximate latitude 50°06'35"N and longitude 119°22'48"W; thence northerly to a point on Oyama Road at approximate latitude 50°06'36"N and longitude 119°22'48"W; thence northeasterly in a straight line to a point on the southerly shore of Kalamalka Lake at approximate latitude 50°06'53"N and longitude 119°22'38"W; thence generally northerly along said lake to the northerly limit of the District Municipality of Lake Country; and
- (c) that part of the City of Kelowna lying southerly and easterly of Highway 97 (Harvey Avenue, Highway 97 North).

---

## Kootenay—Columbia

(Population: 111,821)  
(Map 1 and 2)

### Consists of:

- (a) the Regional District of East Kootenay;
- (b) those parts of the Regional District of Central Kootenay comprising:
  - (i) the villages of Kaslo and Salmo;
  - (ii) the Town of Creston;
  - (iii) the City of Nelson;
  - (iv) Central Kootenay electoral areas A, B, C, D, E, F and G; and
- (c) those parts of the Columbia-Shuswap Regional District comprising:
  - (i) the Town of Golden
  - (ii) Columbia-Shuswap Electoral area A.

---

## Langley—Aldergrove

(Population: 117,066)  
(Map 5 and 12)

### Consists of:

- (a) that part of the Metro Vancouver Regional District consisting of part of the Corporation of the Township of Langley lying southerly in a line described as follows: commencing at the intersection of 200 Street and the Trans-Canada Highway (Highway 1); thence southeasterly along said highway to the easterly limit of said township; and
- (b) that part of the Fraser Valley Regional District consisting of part of the City of Abbotsford bounded as follows: commencing at the intersection of the westerly limit of the Matsqui Main Indian Reserve No. 2 and Harris Road; thence easterly and southeasterly along said road to Bates Road; thence southerly, westerly and southerly along said road to Olund Road; thence westerly along said road to Townline Road; thence southerly along said road and its production to the Trans-Canada Highway (Highway 1); thence southeasterly and easterly along said highway to the intersection with the production of Gladwin Road; thence southerly along said production and along Gladwin Road to the southerly limit of the City of Abbotsford.

---

## Mission—Maple Ridge

(Population: 117,178)

(Map 3 and 5)

### Consists of:

(a) those parts of the Fraser Valley Regional District comprising:

- (i) the district municipalities of Kent and Mission;
- (ii) the Village of Harrison Hot Springs;
- (iii) Fraser Valley electoral areas C and F;
- (iv) that part of Fraser Valley Electoral Area G lying north of the Fraser River;
- (v) that part of Fraser Valley Electoral Area A lying west of the line described as follows: commencing at the intersection of the northerly limit of Fraser Valley Electoral Area A and the Canadian Pacific Railway (approximate latitude 50°03'08"N and longitude 121°32'51"W); thence southerly in a straight line to a point at approximate latitude 49°42'11"N and longitude 121°31'28"W;
- (vi) that part of Fraser Valley Electoral Area B lying westerly and northerly of a line described as follows: commencing at approximate latitude 49°42'11"N and longitude 121°31'28"W; thence southerly in a straight line to the Fraser River at approximate latitude 49°22'27"N and longitude 121°30'11"W; thence westerly along said river to the easterly limit of the district municipality of Kent; and

(b) those parts of the Metro Vancouver Regional District comprising:

- (i) that part of the City of Pitt Meadows lying north of the Alouette River;
- (ii) that part of the City of Maple Ridge lying northeasterly of the line described as follows: commencing at the intersection of the Alouette River and the westerly limit of the City of Maple Ridge; thence generally southeasterly along said river to 224 Street; thence southerly along said street and its production to the Fraser River; thence generally southeasterly and easterly along said river to the easterly limit of the City of Maple Ridge.

---

## Nanaimo—Ladysmith

(Population: 121,508)

(Map 4 and 9)

### Consists of:

(a) those parts of the Regional District of Cowichan Valley comprising:

- (i) the Town of Ladysmith;

- (ii) Cowichan Valley Electoral Area H;
- (iii) Cowichan Valley Electoral Area G, excepting Dayman Island, Hudson Island, Leech Island, Miami Islet, Penelakut Island, Ragged Islets, Reid Island, Rose Islets, Scott Island, Tent Island and Thetis Island; and

(b) that part of the Regional District of Nanaimo comprising:

- (i) Nanaimo electoral areas A and B;
- (ii) Nanaimo Electoral Area C, excluding that part lying northerly and westerly of a line described as follows: commencing at the intersection of the limit of Nanaimo Electoral Area C and Biggs Road; thence westerly along said road and Weigles Road to a point on the southerly production of the northerly limit of Nanaimo Electoral Area C at approximate latitude 49°11'57"N and longitude 124°04'55"W; thence northerly along said extension to said limit;
- (iii) that part of the City of Nanaimo lying easterly and southerly of a line described as follows: commencing at a point on the shore of the Strait of Georgia in front of Sealand Park at approximate latitude 49°14'35"N and longitude 124°01'07"W; thence southwesterly in a straight line to the easterly end point of Waldbank Road; thence southerly in a straight line to the intersection of Sunset Road and Sealand Road; thence southerly along Sealand Road to Hammond Bay Road; thence westerly along said road and Aulds Road to the Nanaimo Parkway; thence generally southerly along said parkway to Mostar Road; thence southerly along said road to Biggs Road; thence generally westerly along said road to the westerly limit of the City of Nanaimo.

---

## New Westminster—Bridgeview

(Population: 118,422)

(Map 12)

Consists of those parts of the Metro Vancouver Regional District described as follows: commencing at the intersection of the Trans-Canada Highway (Highway 1) and North Road; thence southerly along said road to the northerly limit of the City of New Westminister; thence generally easterly and southerly along said limit to the northerly limit of the City of Surrey; thence easterly along said limit to a point at the Fraser River at the intersection of said limit with the northerly production of 130 Street at approximate latitude 49°13'16"N and longitude 122°51'42"W; thence southerly in a straight line along said production and southerly along 130 Street to South Fraser Perimeter Road; thence generally southerly along Bridgeview Drive and along 128 Street to 110 Avenue; thence westerly along said avenue to 126 Street; thence southerly along said street and its production to Old Yale Road (at approximate latitude 49°11'54"N and longitude 122°52'20"W); thence northeasterly along said road to 128 Street; thence southerly along said street to 96 Avenue; thence westerly along said avenue and along the limit of the City of Surrey to the westerly limit of said city; thence northeasterly along said limit to the City of New Westminister; thence northwesterly along the North Arm (Fraser River)

and south of Poplar Island to the southeasterly production of Fenwick Street, that being the limit of the City of New Westminster; thence generally northwesterly and northeasterly along said limit to Griffiths Drive; thence generally northwesterly along said drive to Edmonds Street; thence northeasterly along said street to Canada Way; thence northwesterly along said way to Burris Street; thence northeasterly along said street and its production to the Trans-Canada Highway (Highway 1); thence generally easterly along said highway to the point of commencement.

---

## North Island—Powell River

(Population: 125,964)  
(Map 1 and 6)

### Consists of:

- (a) the regional districts of Mount Waddington and Strathcona;
- (b) the qathet Regional District, excepting qathet Electoral Area E;
- (c) that part of the Central Coast Regional District lying southerly and easterly of a line described as follows: commencing at the westernmost intersection of the easterly limit of said regional district with 52°00'N latitude; thence westerly along said latitude to Fisher Channel; thence generally southerly along said channel, Fitz Hugh Sound, the South Passage and Queen Charlotte Sound to the southerly limit of said regional district;
- (d) those parts of the Comox Valley Regional District comprising:
  - (i) the Town of Comox;
  - (ii) Comox Valley Electoral Area B (Lazo North) and Comox Valley Electoral Area C (Puntledge-Black Creek);
  - (iii) Pentledge Indian Reserve No. 2 and Comox Indian Reserve No. 1; and
- (e) those parts of the City of Courtenay:
  - (i) lying southwesterly of Arden Road;
  - (ii) lying easterly of the Courtenay River and northerly of the Puntledge River.

## North Okanagan—Shuswap

(Population: 109,971)

(Map 2 and 7)

### Consists of:

- (a) the Regional District of North Okanagan, excluding the areas described as follows:
- (i) that part of the City of Vernon lying westerly of L & A Road;
  - (ii) that part of North Okanagan Electoral Area C lying northerly and westerly of a line described as follows: commencing at the intersection of the westerly limit of said electoral area with Black Rock Road; thence generally southeasterly and southerly along said road and Francis Street to 25 Avenue; thence westerly along said avenue to the westerly limit of North Okanagan Electoral Area C;
  - (iii) that part of North Okanagan Electoral Area C lying southwesterly of Highway 6;
  - (iv) that part of the District Municipality of Coldstream lying westerly of a line described as follows: commencing at the intersection of the northerly limit of said district municipality with Highway 6; thence generally southeasterly along said highway to Kalamalka Road; thence southwesterly and westerly along said road to Howe Drive; thence southerly along said drive to Coldstream Creek; thence generally westerly along said creek to Coldstream Creek Road; thence westerly and northwesterly along said road to Cosens Bay Road; thence southeasterly and southwesterly along said road to the limit of said district municipality;
  - (v) that part of North Okanagan Electoral Area B located southerly of the City of Vernon and the District Municipality of Coldstream; and
  - (vi) that part of North Okanagan Electoral Area B lying southerly and westerly of a line described as follows: commencing at a northwest corner of the City of Vernon at approximate latitude 50°18'14"N and longitude 119°17'06"W; thence generally northerly along the eastern limit of Okanagan Indian Reserve No. 1 to the northerly limit of North Okanagan Electoral Area B; thence easterly along said limit to Highway 97; thence easterly along said highway to latitude 50°20'25"N and longitude 119°14'34"W; thence southeasterly to the intersection of Greenhow Road and Baker Hogg Road; thence southerly along Greenhow Road to Pleasant Valley Road; thence generally southerly along said road to Herry Road; thence easterly and southerly along said road to approximate latitude 50°18'39"N and longitude 119°14'13"W; thence easterly in a straight line to the easterly limit of North Okanagan Electoral Area B (being L & A Road) at approximate latitude 50°18'39"N and longitude 119°13'56"W;
- (b) those parts of the Regional District of Columbia-Shuswap comprising:
- (i) the cities of Salmon Arm and Revelstoke
  - (ii) the District Municipality of Sicamous; and
  - (iii) Columbia-Shuswap electoral areas B, C, D, E and F;

(c) that part of the Regional District of Central Kootenay comprising Central Kootenay Electoral Area K lying west of the Columbia River; and

(d) that part of the Thompson-Nicola Regional District comprising:

- (i) the Village of Chase;
- (ii) that part of Thompson-Nicola Electoral Area L (Grasslands) lying easterly of Highway 5A;
- (iii) that part of Thompson-Nicola Electoral Area P (Rivers and the Peaks) lying northerly and easterly of a line described as follows: commencing at the southerly corner of Thompson-Nicola Electoral Area O (Lower North Thompson) at approximate latitude 50°55'29"N and longitude 119°48'16"W; thence southerly in a straight line to a point at approximate latitude 50°45'24"N and longitude 119°48'04"W; thence southeasterly in a straight line to the South Thompson River at approximate latitude 50°44'23"N and longitude 119°45'48"W; and
- (iv) that part of the City of Kamloops lying southerly of the South Thompson River and easterly of the line described as follows: commencing at the intersection of the South Thompson River and Highway 5; thence southerly and southwesterly along said highway and the Trans-Canada Highway to Peterson Creek; thence southerly along said creek to a point at approximate latitude 50°38'38"N and longitude 120°19'56"W; thence westerly to a point at approximate latitude 50°38'38"N and longitude 120°20'07"W; thence southwesterly to a point at approximate latitude 50°38'35"N and longitude 120°20'10"W; thence northwesterly to a point at approximate latitude 50°38'38"N and longitude 120°20'13"W; thence westerly in a straight line to Princeton-Kamloops Highway (Highway 5A); thence generally southerly along said highway to a point at approximate latitude 50°37'46"N and longitude 120°20'12"W; thence southerly in a straight line to a point at approximate latitude 50°37'22"N and longitude 120°20'08"W; thence easterly in a straight line to the Princeton-Kamloops Highway (Highway 5A); thence southeasterly and southerly along said highway to the southern limit of the City of Kamloops.

---

## North Vancouver

(Population: 114,310)

(Map 3 and 12)

Consists of those parts of the Metro Vancouver Regional District comprising:

(a) all that part of the City of North Vancouver except that portion of said city lying northeasterly of a line described as follows: commencing at the intersection of the easterly limit of said city and the Trans-Canada Highway (Highway 1) at approximate latitude 49°19'38"N and longitude 123°03'05"W; thence southeasterly along said highway to the easterly limit of said city;

(b) those parts of the District Municipality of North Vancouver comprising:



- (i) that part of said district municipality lying westerly and northwesterly of a line described as follows: commencing at the intersection of the northerly limit of said district municipality with Lynn Creek; thence generally southerly along said creek to a point at approximate latitude 49°22'12"N and longitude 123°02'06"W; thence southerly in a straight line to a point on Mountain Highway at an approximate latitude 49°21'30"N and longitude 123°02'07"W; thence southerly along said highway to Lynn Valley Road; thence southwesterly along said road to the Trans-Canada Highway (Highway 1); and
- (ii) that part of said district municipality lying northwesterly of Lynn Creek and southwesterly of the Trans-Canada Highway (Highway 1);

(c) that part of Metro Vancouver Electoral Area A lying easterly of the Capilano River and westerly of the Indian River and Indian Arm, passing to the east of Croker Island; and

(d) that part of the District Municipality of West Vancouver lying southerly and easterly of a line described as follows: commencing at the intersection of the easterly limit of said district municipality and the Trans-Canada Highway (Highway 1, Upper Levels Highway); thence generally northwesterly along said highway to 15th Street; thence southerly along said street and its production to the southerly limit of said district municipality.

---

## Pitt Meadows—Fort Langley

(Population: 116,538)

(Map 12)

Consists of those parts of the Metro Vancouver Regional district comprising:

(a) that part of Metro Vancouver Electoral Area A comprising Barnston Island;

(b) that part of the City of Maple Ridge lying southwesterly of a line described as follows: commencing at the intersection of the westerly limit of said city and the Alouette River; thence generally southeasterly along said river to 224 Street; thence southerly along said street and its production to the southerly limit of said city;

(c) that part of the City of Pitt Meadows lying southwesterly of a line described as follows: commencing at the intersection of the easterly limit of said city and the Alouette River; thence generally northwesterly along said river to the westerly limit of said city;

(d) that part of the City of Port Coquitlam lying southwesterly of a line described as follows: commencing at the intersection of the easterly limit of said city and the Pitt River Bridge; thence northwesterly along said bridge and Lougheed Highway (Highway 7) to the westerly limit of said city;

(e) that part of the City of Surrey lying northerly and easterly of a line described as follows: commencing at the intersection of the easterly limit of said city with the Trans-Canada Highway (Highway 1); thence northwesterly along said highway to its intersection with the production of 168 Street (approximate latitude 49°11'14"N and longitude 122°45'23"W); thence northerly

along said street and its production to 108 Avenue; thence northerly in a straight line to the northerly limit of said city (approximate latitude 49°12'54"N and longitude 122°45'24"); and

(f) that part of the Township of Langley lying northerly of the Trans-Canada Highway (Highway 1).

---

## Port Moody—Coquitlam

(Population: 116,740)

(Map 12)

Consists of those parts of the Metro Vancouver Regional District comprising:

(a) that part of the City of Coquitlam lying southerly and westerly of a line described as follows: commencing at the intersection of the westerly limit of said city and the Canadian Pacific Railway at approximate latitude 49°16'36"N and longitude 122°49'26"W; thence easterly along said railway to a transmission line at approximate latitude 49°16'35"N and longitude 122°48'57"W; thence southerly along said transmission line to approximate latitude 49°16'25"N and longitude 122°48'57"W; thence southwesterly in a straight line to approximate latitude 49°16'20"N and longitude 122°49'10"W; thence southerly in a straight line to Como Lake Avenue at approximate latitude 49°15'47"N and longitude 122°49'07"W; thence easterly along said avenue to Mariner Way; thence southerly and southwesterly along said way to Fern Terrace; thence generally southeasterly along said road to approximate latitude 49°14'29"N and longitude 122°49'00"W; thence southeasterly in a straight line to the intersection of Cape Horn Avenue and Colony Farm Road; thence southeasterly along Colony Farm Road to the Canadian Pacific Railway; thence southwesterly and southerly along said railway to approximate latitude 49°13'39"N and longitude 122°48'57"W; thence southerly in a straight line to the Trans-Canada Highway (Highway 1) at approximate latitude 49°13'27"N and longitude of 122°48'53"W; thence southerly along said highway to the southerly limit of said city;

(b) that part of the City of Burnaby bounded as follows: commencing at the intersection of the easterly limit of the City of Burnaby and Broadway; thence westerly along Broadway to Gaglardi Way; thence generally northwesterly along said road to Burnaby Mountain Parkway; thence westerly along said parkway to a transmission line at approximate latitude 49°16'28"N and longitude 122°56'12"W; thence southerly along said transmission line to Greystone Drive; thence southerly along said drive, Arden Avenue and Lake City Way to Lougheed Highway (Highway 7); thence easterly and southeasterly along said highway to the easterly limit of said city; thence northerly along said limit to the point of commencement;

(c) the City of Port Moody;

(d) the villages of Anmore and Belcarra; and

(e) those parts of Metro Vancouver Electoral Area A comprising:

(i) that part on the north shoreline of Burrard Inlet within the City of Port Moody; and

- (ii) Boulder Island.

---

## Prince George—Peace River—Northern Rockies

(Population: 116,962)

(Map 1 and 11)

### Consists of:

- (a) the Northern Rockies Regional Municipality;
- (b) the Peace River Regional District; and
- (c) those parts of the Regional District of Fraser-Fort George comprising:
  - (i) that part of the City of Prince George lying northerly and easterly of a line described as follows: commencing at the intersection of the westerly limit of said city with the Nechako River; thence generally southeasterly along said river to the Cariboo Highway (Highway 97); thence southerly and southeasterly along said highway to the Fraser River; thence generally southerly along said river to the southerly limit of said city;
  - (ii) Fraser-Fort George electoral areas A, D, F, G and H;
  - (iii) the District Municipality of Mackenzie; and
  - (iv) the villages of McBride and Valemount.

---

## Richmond East

(Population: 116,764)

(Map 12)

Consists of those parts of the Metro Vancouver Regional District comprising:

- (a) that part of the City of Richmond lying easterly and southerly of a line described as follows: commencing at the intersection of the northerly limit of said city with the Oak Street Bridge (Highway 99); thence southeasterly along said bridge and Highway 99 (Fraser-Delta Thruway) to Cambie Road; thence westerly along said road to No. 4 Road; thence southerly along said road to Westminster Highway; thence westerly along said highway to No. 3 Road; thence southerly along said road to Steveston Highway; thence westerly along said highway to No. 2 Road; thence southerly to Moncton Street; thence westerly along said street to Railway Avenue; thence southerly, westerly and southwesterly along said avenue and its production to the limit of said city;
- (b) that part of the City of Delta lying northerly and westerly of a line described as follows: commencing at the northerly limit of said city and Highway 99; thence southeasterly along said highway to South Fraser Perimeter Road; thence northerly, northeasterly and easterly along

said road to Highway 91 Connector; thence southeasterly along said road to Nordel Way; thence southerly and easterly along said way to Highway 91; thence southerly along said highway to 72 Avenue; thence easterly along said avenue to 112 Street; thence northerly along said street to 90 Avenue; thence westerly along said avenue to River Road; thence northerly, northwesterly and northeasterly along said road to the limit of said city; and

(c) that part of the City of New Westminster located on Lulu Island.

---

## **Richmond West**

(Population: 119,857)

(Map 12)

Consists of part of the Metro Vancouver Regional District comprising that part of the City of Richmond lying westerly of a line described as follows: commencing at the intersection of the northerly limit of said city with the Oak Street Bridge (Highway 99); thence southeasterly along said bridge and Highway 99 to Cambie Road; thence westerly along said road to No. 4 Road; thence southerly along said road to Westminster Highway; thence westerly along said highway to No. 3 Road; thence southerly along said road to Steveston Highway; thence westerly along said highway to No. 2 Road; thence southerly along said road to Moncton Street; thence westerly along said street to Railway Avenue; thence southerly, westerly and southwesterly along said avenue and its production to the limit of said city.

---

## **Saanich—Gulf Islands**

(Population: 122,147)

(Map 4 and 13)

Consists of those parts of the Capital Regional District comprising:

(a) the Town of Sidney;

(b) the district municipalities of North Saanich and Central Saanich;

(c) the regional district areas of Saltspring Island and Southern Gulf Islands;

(d) that part of the District Municipality of Saanich lying northerly and easterly of a line described as follows: commencing at the intersection of the northern limit of said district municipality with Wallace Drive; thence generally southerly along said drive to West Saanich Road; thence generally southerly along said road to Quadra Street; thence southeasterly along said street to Patricia Bay Highway; thence southerly along said highway to McKenzie Avenue; thence easterly along said avenue to Quadra Street; thence generally southerly along said street to Cook Street; thence southeasterly along said street to the southern limit of District Municipality of Saanich; and

(e) that part of the Regional District Area of Juan de Fuca (Part 1) lying northwesterly of a line described as follows: commencing at a point on the western limit of said regional district area located at approximate latitude 48°28'38"N and longitude 123°18'02"W; thence northeasterly in a straight line to the northern limit of said regional district area located at approximate latitude 48°30'12"N and longitude 123°16'13"W.

---

## Skeena—Bulkley Valley

(Population: 89,689)

(Map 1)

### Consists of:

- (a) the Stikine Region;
- (b) the Regional District of Kitimat-Stikine and the North Coast Regional District;
- (c) the Regional District of Bulkley-Nechako, excepting: the District Municipality of Vanderhoof, Stony Creek Indian Reserve No.1, Laketown Indian Reserve No.3 and Bulkley-Nechako Electoral Area F; and
- (d) those parts of the Regional District of Central Coast comprising:
  - (i) Central Coast electoral areas C, D and E; and
  - (ii) that part of Central Coast Electoral Area A lying northerly and westerly of a line described as follows: commencing at the most westerly intersection of the easterly limit of said regional district with 52°00'N latitude; thence westerly along said latitude to Fisher Channel; thence generally southerly along said channel, Fitz Hugh Sound, the South Passage and Queen Charlotte Sound to the southerly limit of said electoral area.

---

## South Okanagan—West Kootenay

(Population: 108,971)

(Map 2 and 10)

### Consists of:

- (a) the Regional District of Kootenay Boundary;
- (b) that part of the Regional District of Central Kootenay comprising:
  - (i) Central Kootenay electoral areas H, I and J;
  - (ii) that part of Central Kootenay Electoral Area K lying easterly of the Columbia River; and

(c) those parts of the Regional District of Okanagan-Similkameen comprising:

- (i) that part of the City of Penticton lying easterly of the line described as follows: commencing at the northwestern limit of said city at the production of Martin Street; thence southerly along said production to Martin Street; thence southerly along said street to Lakeshore Drive West; thence easterly along Lakeshore Drive West to Main Street; thence southerly along said street to Skaha Lake Road; thence southwesterly and southerly along said street to Lee Avenue; thence easterly along said avenue to Parkview Street; thence southerly along said street and its production to Skaha Lake;
- (ii) Okanagan-Similkameen electoral areas A, B, C, D and E;
- (iii) that part of Okanagan-Similkameen Electoral Area I lying southeasterly of a line described as follows: commencing at the intersection of the southern boundary of Keremeos Forks Indian Reserve No. 12 & 12A and Highway 3A; thence northeasterly along said highway to the intersection of said highway with the south boundary of Penticton Indian Reserve No. 1; and
- (iv) those parts of Okanagan-Similkameen Electoral Area G lying southerly and easterly of the line described as follows: commencing at the intersection of the limit of Okanagan-Similkameen Electoral Area G (being the south boundary of Keremeos Forks Indian Reserve No. 12 & 12A) and Highway 3A; thence southerly along said highway to a point located at approximate latitude 49°16'09"N and longitude 119°49'49"W; thence easterly in a straight line from said point to Keremeos Creek (approximate latitude 49°16'10"N and longitude 119°49'34"W); thence generally southerly along said creek to a point located at approximate latitude 49°15'27"N and longitude 119°49'39"W; thence westerly in a straight line to Highway 3A; thence southerly along said highway to Keremeos Bypass Road; thence generally southwesterly along said road to Crowsnest Highway (Highway 3); thence westerly along said highway to Ashnola Road; thence westerly and northwesterly along said road to the easterly limit of Ashnola Indian Reserve No. 10; thence southerly along the eastern boundary to the south boundary of said reserve; thence generally westerly along the southern boundary of said reserve to longitude 120°00'00"W; thence southerly to the southern limit of Okanagan-Similkameen Electoral Area G at latitude 49°00'00"N.

---

## South Surrey—White Rock

(Population: 115,956)

(Map 12)

Consists of those parts of the Metro Vancouver Regional District comprising:

(a) the City of White Rock;

(b) that part of the City of Surrey lying southerly of a line described as follows: commencing at the intersection of the westerly limit of said city with the British Columbia Railway; thence easterly along said railway to King George Boulevard; thence northerly and northwesterly along said boulevard to 56 Avenue; thence generally easterly along said avenue to 192 Street; thence

southerly along said street to 56 Avenue; thence easterly along said avenue to the easterly limit of said city; and

(c) Semiahmoo Indian Reserve.

---

## Surrey Centre

(Population: 117,698)

(Map 12)

Consists of those parts of the Metro Vancouver Regional District comprising that part of the City of Surrey bounded as follows: commencing at the intersection of the northern limit of said city and the northerly production of 130 Street at approximate latitude 49°13'16"N and longitude 122°51'42"W; thence southerly in a straight line along the production of 130 Street to 130 Street; thence southerly along said street to South Fraser Perimeter Road; thence southerly and southwesterly along Bridgeview Drive and along 128 Street to 110 Avenue; thence westerly along said avenue to 126 Street; thence southerly along said street and its production to Old Yale Road (approximate latitude 49°11'54"N and longitude 122°52'20"W); thence northeasterly along said road to 128 Street; thence southerly along said street to 88 Avenue; thence generally easterly along said avenue to 148th Street; thence northerly along said street to 100 Avenue; thence easterly along said avenue to 152 Street; thence northerly along said street to the Trans-Canada Highway (Highway 1); thence generally southeasterly along said highway to the intersection of the production of 168 Street at approximate latitude 49°11'14"N and longitude 122°45'23"W; thence northerly in a straight line along the production of 168 Street to 168 Street; thence northerly along said street to 108 Avenue; thence northerly in a straight line to the northerly limit of said city; thence westerly following said northerly limit to the point of commencement.

---

## Surrey West

(Population: 115,780)

(Map 12)

Consists of those parts of the Metro Vancouver Regional District comprising:

(a) that part of the City of Surrey bounded as follows: commencing at the intersection of 120 Street with 96 Avenue; thence easterly along said avenue to 128 Street; thence southerly along said street to 88 Avenue; thence easterly along said avenue to 144 Street; thence southerly along said street to 56 Avenue; thence westerly along said avenue to King George Boulevard; thence northwesterly and northerly along said boulevard to 72 Avenue; thence westerly along said avenue to 120 Street; thence northerly along said street to the point of commencement; and

(b) that part of the City of Delta bounded as follows: commencing at the intersection of 120 Street with 96 Avenue; thence westerly along said avenue and its production to River Road at approximate latitude 49°10'38"N and longitude 122°54'47"W; thence southwesterly and southerly along said road to 90 Avenue; thence easterly along said avenue to 112 Street; thence southerly along said street to 72 Avenue; thence easterly along said avenue to 120 Street; thence northerly along said street to the point of commencement.

---

## Vancouver Centre

(Population: 115,964)

(Map 12)

Consists of that part of the Metro Vancouver Regional District comprising that part of the City of Vancouver bounded as follows: commencing at the intersection of a corner of the District of North Vancouver and the northerly limit of the City of Vancouver at approximate latitude 49°18'05"N and longitude 123°06'10"W; thence southwesterly to latitude 49°17'22"N and longitude 123°06'25"W; thence southwesterly along a straight line to the intersection of Waterfront Road West and the Heliport Access Road; thence southerly in a straight line to Cambie Street; thence southerly along said street to Dunsmuir Street; thence southeasterly and easterly along said street to Main Street; thence southerly along said street to 2nd Avenue East; thence westerly along said avenue to 2nd Avenue West; thence westerly and southwesterly along said avenue to Cambie Street; thence northerly along said street and Cambie Bridge to the centre line of False Creek; thence westerly along said centre line to the mouth of English Bay at approximate latitude 49°17'00"N and longitude 123°09'00"W; thence westerly in a straight line to the westerly limit of said city; thence northerly, easterly and southeasterly along the westerly and northerly limits of said city to the point of commencement.

---

## Vancouver East

(Population: 115,759)

(Map 12)

Consists of that part of the Metro Vancouver Regional District comprising that part of the City of Vancouver bounded as follows: commencing at the intersection of the southwesterly corner of the District of North Vancouver and the northerly limit of the City of Vancouver at approximate latitude 49°18'05"N and longitude 123°06'10"W; thence southwesterly in a straight line to the intersection of Waterfront Road West and the Heliport Access Road at approximate latitude 49°17'10"N and longitude 123°06'32"W; thence southerly in a straight line to the northern end of Cambie Street; thence southerly along said street to Dunsmuir Street; thence southeasterly and easterly along Dunsmuir Street to Main Street; thence southerly along said street to 16th Avenue East; thence easterly along said avenue to Knight Street; thence northerly along said street to 15th Avenue East; thence easterly along said avenue and its production to 16th Avenue East; thence easterly along said avenue to Victoria Drive; thence northerly along said drive to 15th Avenue East; thence easterly along said avenue and its intermittent production to



Nanaimo Street; thence northerly along said street to Grandview Highway South; thence easterly along said highway and Grandview Highway to the easterly limit of the City of Vancouver; thence northerly along said city limit to the northeast corner of the City of Vancouver; thence westerly and northwesterly following the northerly limit of the City of Vancouver to the point of commencement.

---

## Vancouver Granville

(Population: 117,201)  
(Map 12)

Consists of those parts of the Metro Vancouver Regional District comprising that part of the City of Vancouver bounded as follows: commencing at the intersection of the southerly limit of said city with the southerly production of Cambie Street; thence northerly along said production and Cambie Street to 41st Avenue West; thence easterly along said avenue and 41st Avenue East to Main Street; thence northerly along said street to 2nd Avenue East; thence westerly along said avenue to 2nd Avenue West; thence southwesterly along said avenue to Cambie Street; thence northerly along said street to False Creek; thence westerly along said creek to Granville Street; thence southwesterly along said street to 4th Avenue West; thence westerly along said avenue to Arbutus Street; thence southerly along said street to 37th Avenue West; thence easterly along said avenue to the Arbutus Greenway (formerly Canadian Pacific Railway); thence southerly and southeasterly along said greenway to the Canadian Pacific Railway; thence southeasterly along said railway to Marine Drive Southwest; thence southerly along said drive to the southerly limit of said city; thence generally easterly along said limit to the point of commencement.

---

## Vancouver Kingsway

(Population: 117,209)  
(Map 12)

Consists of those parts of the Metro Vancouver Regional District comprising:

(a) that part of the City of Vancouver bounded as follows: commencing at the intersection of Grandview Highway with the easterly limit of said city (Boundary Road); thence southerly along said limit (Boundary Road) to Kingsway; thence westerly and northwesterly along Kingsway to Joyce Street; thence southwesterly along said street to 41st Avenue East; thence westerly along said avenue to Main Street; thence northerly along said street to 16th Avenue East; thence easterly along said avenue to Knight Street; thence northerly along said street to 15th Avenue East; thence easterly along said avenue and its production to 16th Avenue East; thence easterly along said avenue to Victoria Drive; thence northerly along said drive to 15th Avenue East; thence easterly along said avenue and its intermittent production to Nanaimo Street; thence northerly along said street to Grandview Highway South; thence easterly along said highway and Grandview Highway to the point of commencement; and

(b) that part of the City of Burnaby bounded as follows: commencing at the intersection of Moscrop Street and the westerly limit of said city (Boundary Road); thence southerly along said limit (Boundary Road) to Kingsway; thence easterly along Kingsway to Grange Street; thence easterly and southeasterly along said street to Willingdon Avenue; thence northerly along said avenue to Moscrop Street; thence westerly along said street to the point of commencement.

---

## Vancouver Quadra

(Population: 115,873)  
(Map 12)

Consists of those parts of the Metro Vancouver Regional District comprising:

(a) that part of the City of Vancouver lying westerly and southerly of a line described as follows: commencing at the intersection of the southerly limit of said city with Marine Drive Southwest; thence northerly along said street to the Canadian Pacific Railway; thence northwesterly along said railway to the Arbutus Greenway (formerly Canadian Pacific Railway); thence northwesterly and northerly along said greenway to 37th Avenue West; thence westerly along said avenue to Arbutus Street; thence northerly along said street to 4th Avenue West; thence easterly along said avenue to Granville Street; thence northerly and northeasterly along said street to False Creek; thence northwesterly following the southern shoreline of said creek to English Bay; thence westerly following the southern shoreline of said bay to the westerly limit of said city;

(b) the University Endowment Lands and the University of British Columbia lying westerly of the westerly limit of the City of Vancouver; and

(c) Musqueam Indian Reserve No. 2.

---

## Vancouver South

(Population: 117,680)  
(Map 12)

Consists of those parts of the Metro Vancouver Regional District comprising:

(a) that part of the City of Burnaby bounded as follows: commencing at the intersection of Willingdon Avenue and Grange Street; thence northwesterly and westerly along said street to Kingsway; thence westerly along Kingsway to the westerly limit of the City of Burnaby (Boundary Road); thence southerly along said limit to Rumble Street; thence easterly along said street to Patterson Avenue; thence northerly along said avenue to Willingdon Extension; thence northerly and northeasterly along said extension to Willingdon Avenue; thence northeasterly along said avenue to the point of commencement; and

(b) that part of the City of Vancouver bounded as follows: commencing at the intersection of the easterly limit of said city (Boundary Road) with Kingsway; thence westerly and northwesterly along Kingsway to Joyce Street; thence southwesterly along said street to 41st Avenue East; thence westerly along said avenue and 41st Avenue West to Cambie Street; thence southerly along said street and its southerly production to the southerly limit of the City of Vancouver in the Fraser River; thence generally easterly along said limit (Fraser River) to the westerly limit of the City of Burnaby (Boundary Road and its southerly production); thence northerly along said westerly limit to the point of commencement.

---

## Vernon—Lake Country

(Population: 111,205)

(Map 2 and 8)

### Consists of:

(a) those parts of the North Okanagan Regional District comprising:

- (i) the City of Vernon excluding those parts lying easterly of L & A Road;
- (ii) those parts of North Okanagan Electoral Area B comprising the following:
  - a. that part of North Okanagan Electoral Area B located southerly of the City of Vernon and the District Municipality of Coldstream; and
  - b. that part of North Okanagan Electoral Area B lying southerly and westerly of a line described as follows: commencing at a northwest corner of the City of Vernon at approximate latitude 50°18'14"N and longitude 119°17'06"W; thence generally northerly along the eastern limit of Okanagan Indian Reserve No. 1 to the northerly limit of North Okanagan Electoral Area B; thence easterly along said limit to Highway 97; thence easterly along said highway to latitude 50°20'25"N and longitude 119°14'34"W; thence southeasterly to the intersection of Greenhow Road and Baker Hogg Road; thence southerly along Greenhow Road to Pleasant Valley Road; thence southerly along said road to Herry Road; thence easterly and southerly along said road to approximate latitude 50°18'39"N and longitude 119°14'13"W; thence easterly in a straight line to the easterly limit of North Okanagan Electoral Area B (being L & A Road) at approximate latitude 50°18'39"N and longitude 119°13'56";
- (iii) that part of the District Municipality of Coldstream lying westerly of a line described as follows: commencing at the intersection of the northerly limit of said district municipality with Highway 6; thence generally southeasterly along said highway to Kalamalka Road; thence southwesterly and westerly along said road to Howe Drive; thence southerly along said drive to Coldstream Creek; thence generally westerly along said creek to Coldstream Creek Road; then westerly and northwesterly along said road to Cosens Bay Road; thence southeasterly and southwesterly along said road to the limit of said district municipality; and

- (iv) those parts of North Okanagan Electoral Area C comprising the following:
- a. that part of North Okanagan Electoral Area C lying westerly and northerly of a line described as follows: commencing at the intersection of the westerly limit of said electoral area with Black Rock Road; thence southeasterly and southerly along said road and Francis Street to 25 Avenue; thence westerly along said avenue to the westerly limit of North Okanagan Electoral Area C; and
  - b. that part of North Okanagan Electoral Area C lying southwesterly of Highway 6; and

(b) those parts of the Regional District of Central Okanagan comprising:

- (i) that part of the District Municipality of Lake Country lying westerly of a line described as follows: commencing at the intersection of the southerly limit of said district municipality and Highway 97 North; thence northerly and northwesterly along said highway to the production of Pretty Road (approximate latitude 50°03'18"N and longitude 119°24'32"W); thence easterly along said production in a straight line to Wood Lake; thence generally northerly along said lake to the north shore of said lake at approximate latitude 50°06'35"N and longitude 119°22'48"W; thence northerly to a point on Oyama Road at approximate latitude 50°06'36"N and longitude 119°22'48"W; thence northeasterly in a straight line to a point on the southern shore of Kalamalka Lake at approximate latitude 50°06'53"N and longitude 119°22'38"W; thence generally northerly along said lake to the northerly limit of the District Municipality of Lake Country; and
- (ii) that part of the City of Kelowna lying northerly and westerly of Highway 97 (Harvey Avenue, Highway 97 North).

---

## Victoria

(Population: 123,482)

(Map 13)

Consists of those parts of the Capital Regional District comprising:

- (a) the City of Victoria;
- (b) the District Municipality of Oak Bay;
- (c) that part of the District Municipality of Saanich lying easterly and southerly of a line described as follows: commencing at the intersection of the southerly limit of said district municipality with Shelbourne Street; thence northerly along said street to McKenzie Avenue; thence easterly and southeasterly along said avenue to Finnerty Road; thence northeasterly along said road to Arbutus Road; thence northerly along said road to Hollydene Place; thence northeasterly and northwesterly to the end of said place; thence northeasterly in a straight line to the easterly limit of said district municipality at approximate latitude 48°28'38"N and longitude 123°18'02"W; and

(d) those parts of the Regional District Electoral Area of Juan de Fuca (Part 1) comprising:

- (i) that part lying southeasterly of a line described as follows: commencing at a point on the westerly limit of said Regional District Electoral Area located at approximate latitude 48°28'38"N and longitude 123°18'02"W; thence northeasterly in a straight line to the northerly limit of said regional district electoral area located at approximate latitude 48°30'12"N and longitude 123°16'13"W; and
- (ii) that part lying easterly of a line described as follows: commencing at the southerly intersection of the easterly limit of the District Municipality of Esquimalt with the westerly limit of the City of Victoria; thence southerly along the westerly limit of said city to the southwesternmost point of said limit located westerly of Ogden Point; thence southerly in a straight line to the southerly limit of said regional district electoral area at approximate latitude 48°15'00"N and longitude 123°25'49"W.

---

## West Vancouver—Sunshine Coast—Sea to Sky Country

(Population: 119,155)  
(Map 3 and 12)

### Consists of:

(a) the Sunshine Coast Regional District;

(b) that part of the Squamish-Lillooet Regional District comprising: the Resort Municipality of Whistler, the Village of Pemberton, Squamish-Lillooet electoral areas C and D and the District Municipality of Squamish; and

(c) that part of the Metro Vancouver Regional District lying westerly and northerly of a line described as follows: commencing at the intersection of northerly limit of said regional district with the Capilano River; thence generally southerly along said river to the northerly limit of the District Municipality of West Vancouver; thence easterly and generally southerly along the limit of said district municipality to the Trans-Canada Highway (Highway 1, Upper Levels Highway); thence generally northwesterly along said highway to 15th Street; thence generally southerly along said street and its production to the southerly limit of the District Municipality of West Vancouver.

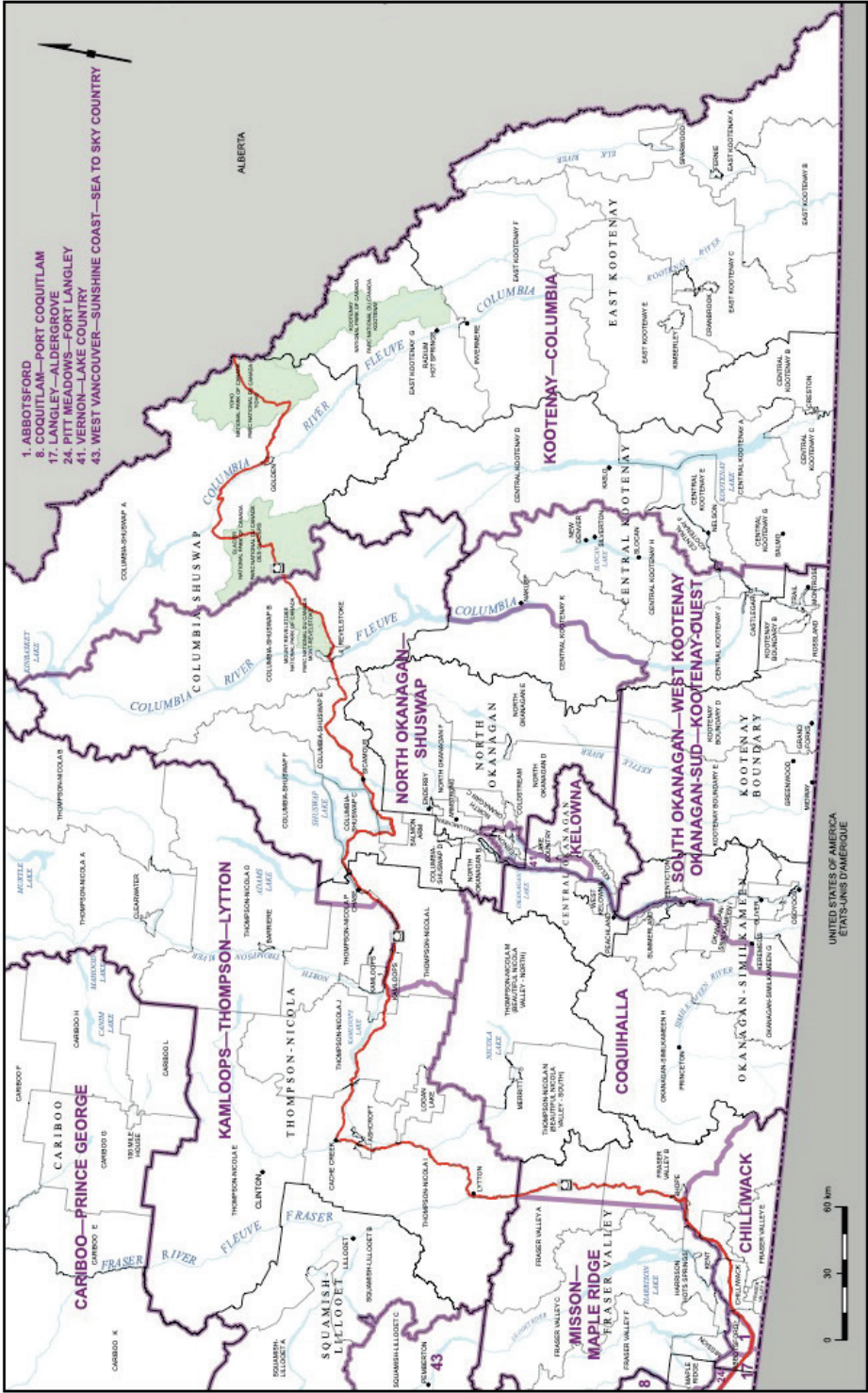
# Map 1

# British Columbia



# Map 2

# Southeastern British Columbia

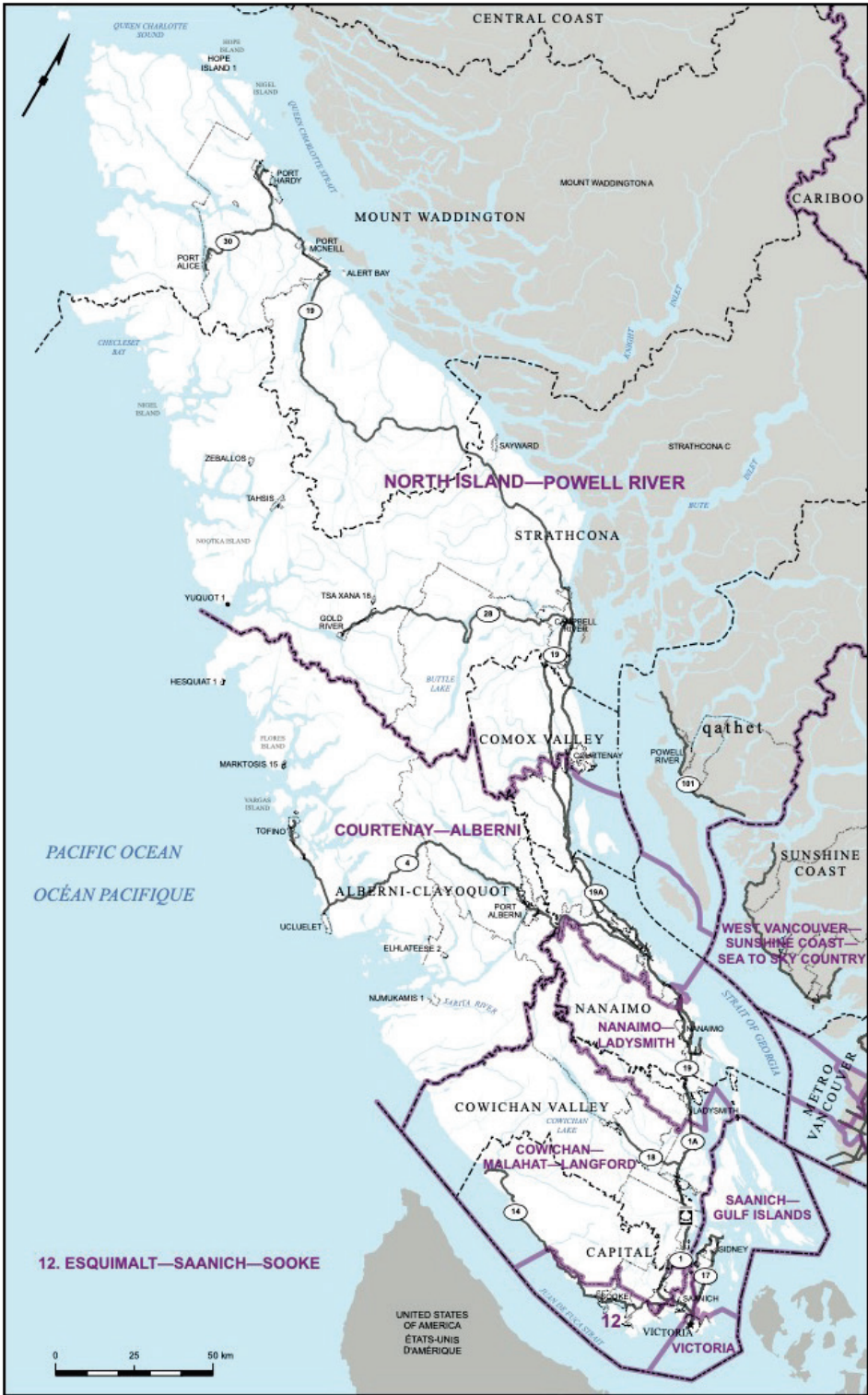






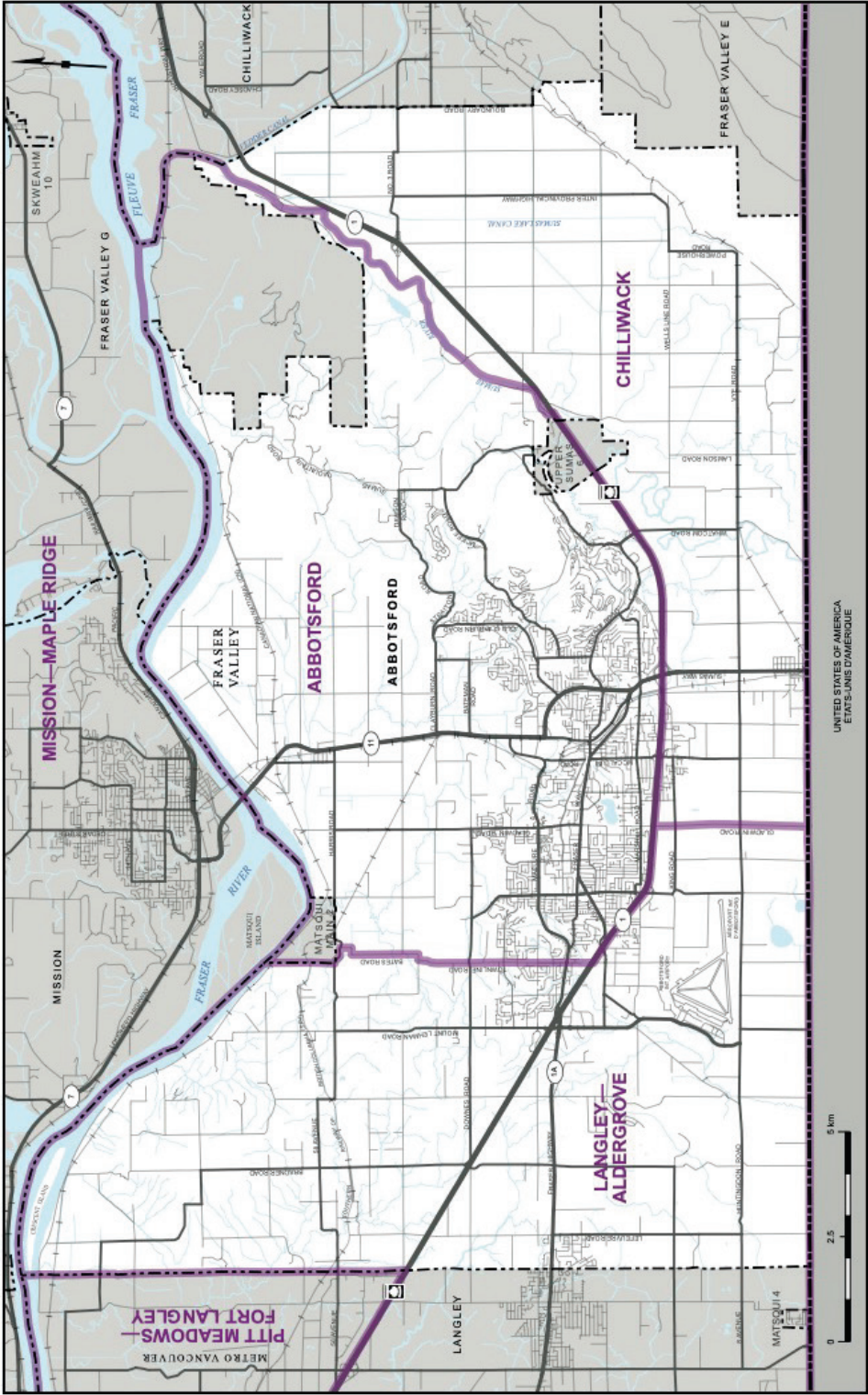
Map 4

# Vancouver Island



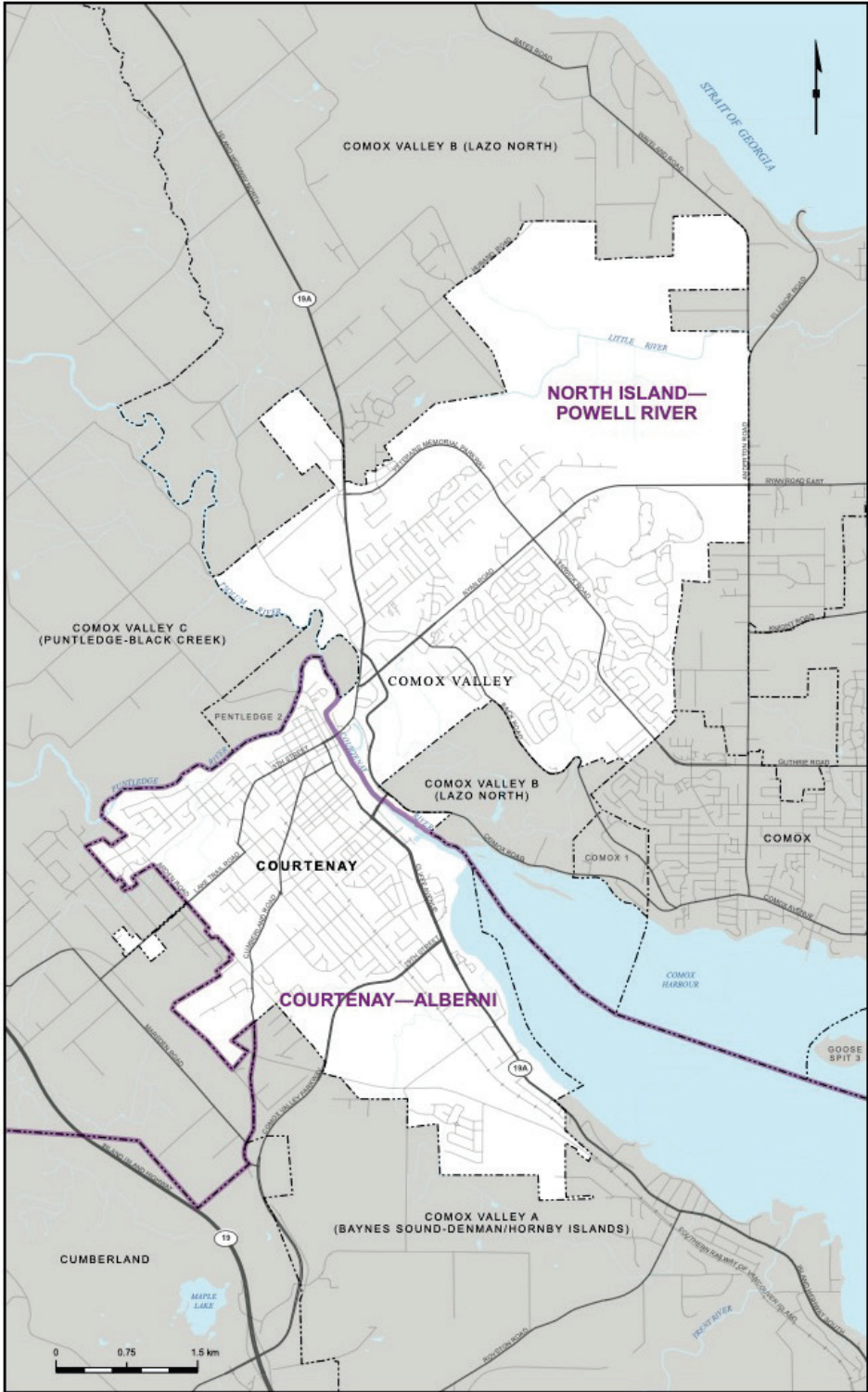
# Map 5

# City of Abbotsford



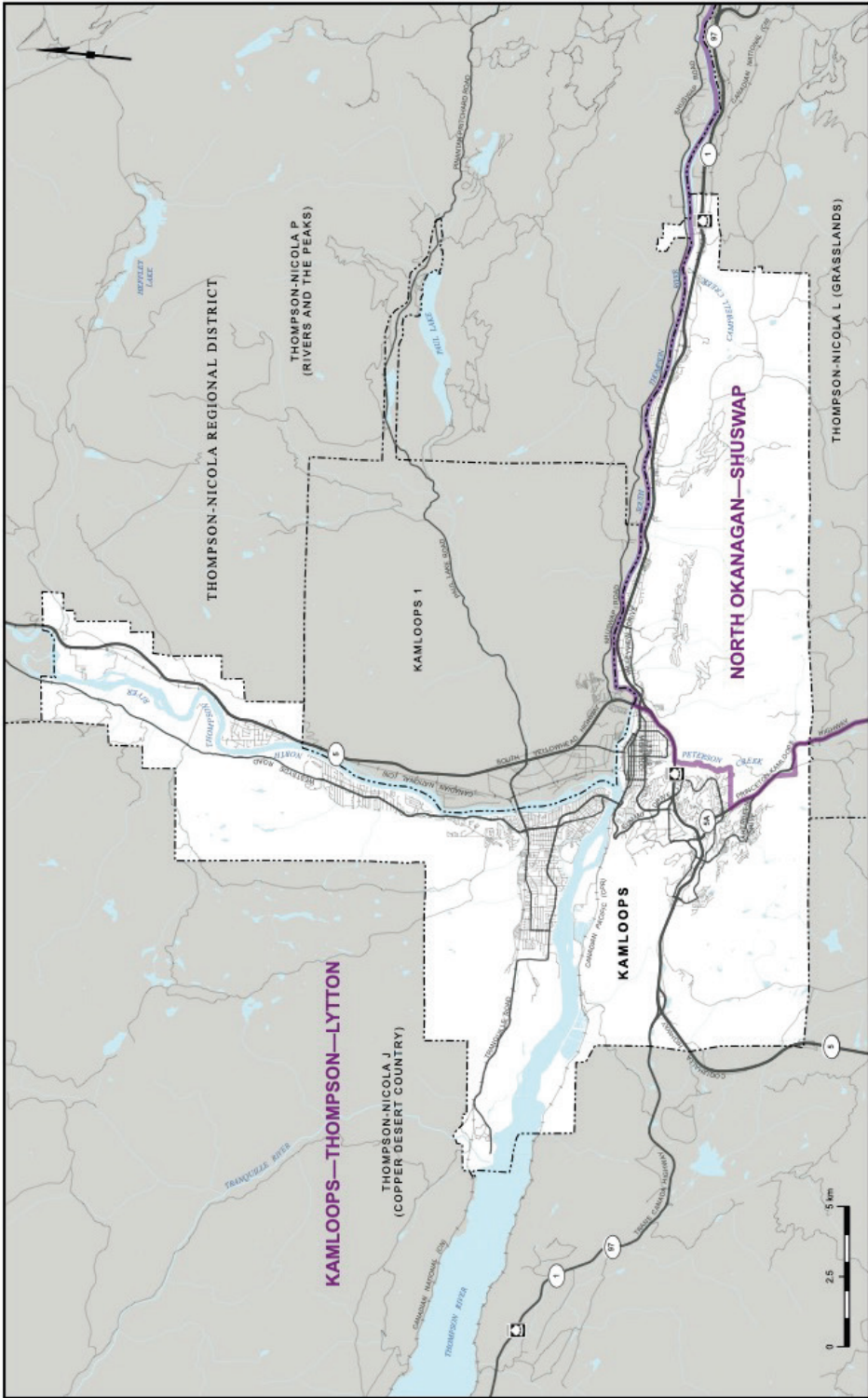
Map  
6

# City of Courtenay



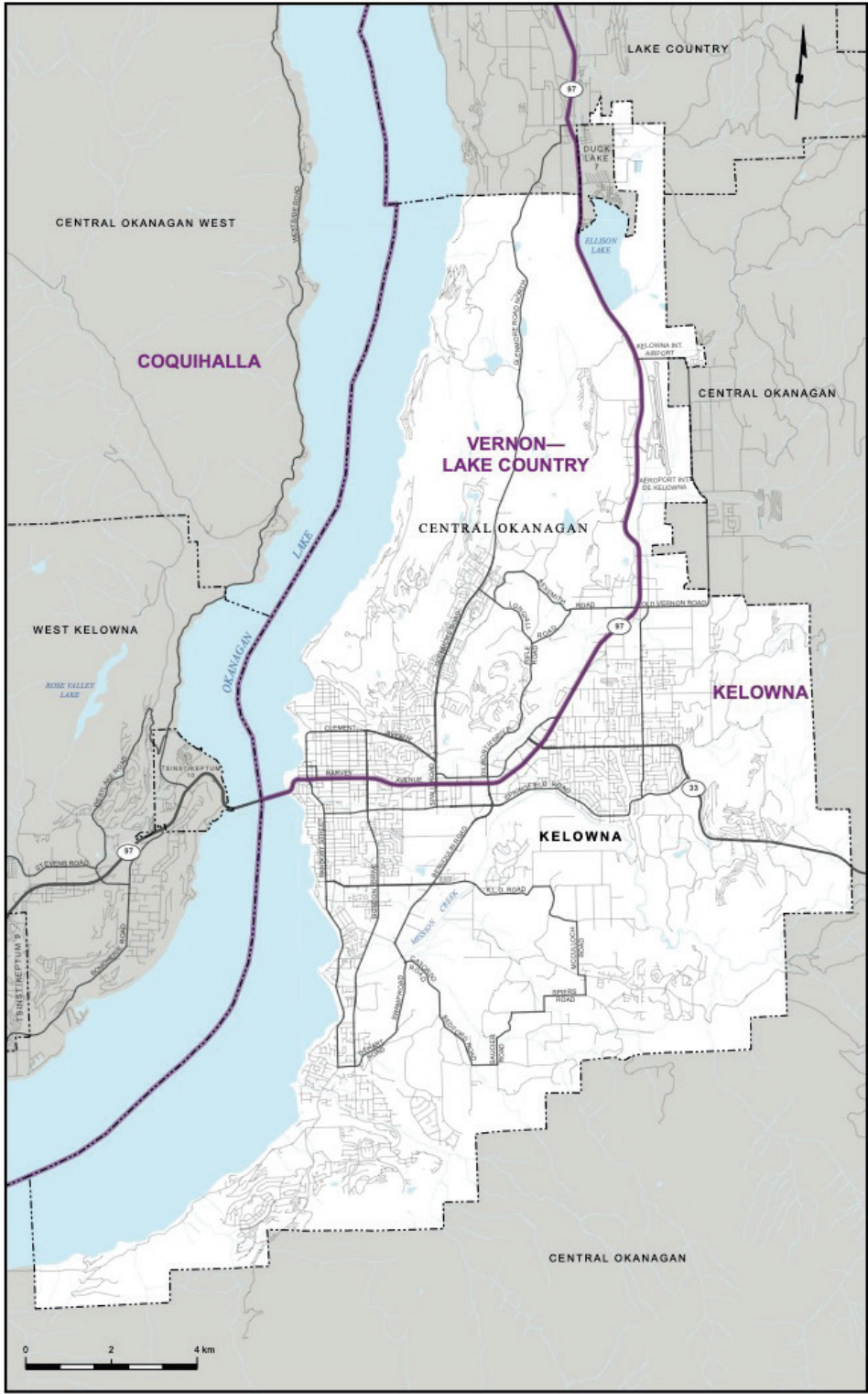
Map  
7

# City of Kamloops



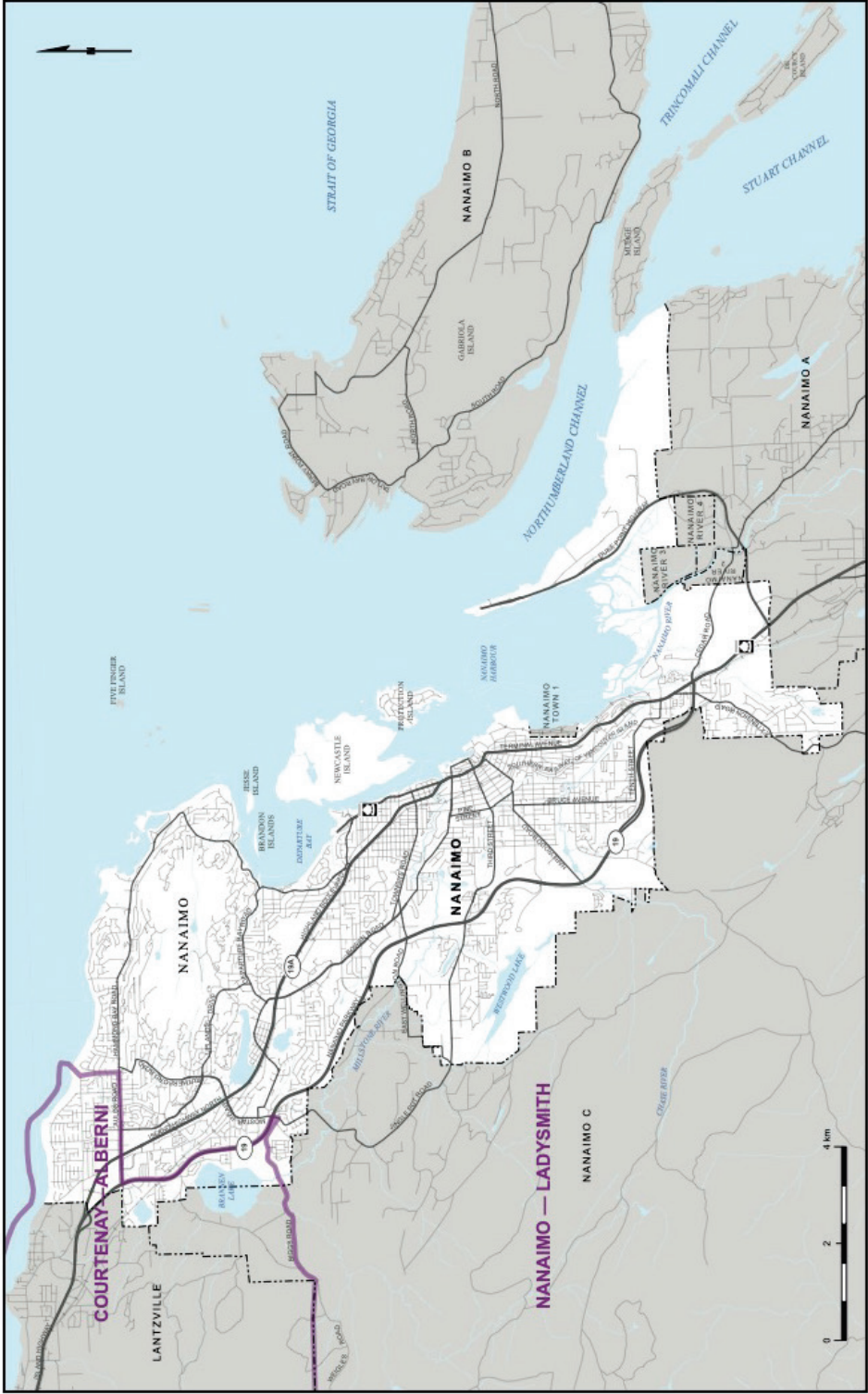
Map  
8

# City of Kelowna



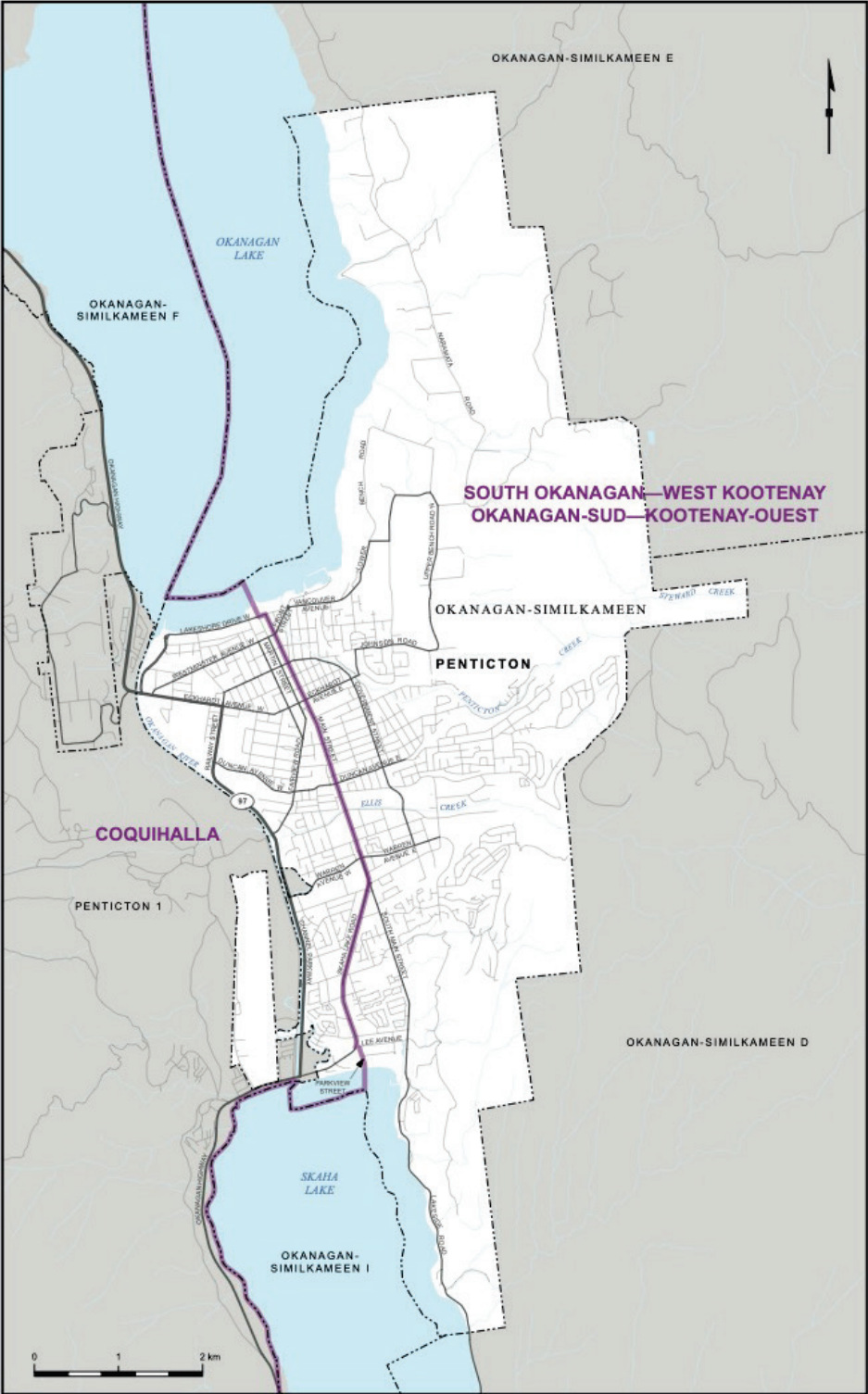
# Map 9

# City of Nanaimo

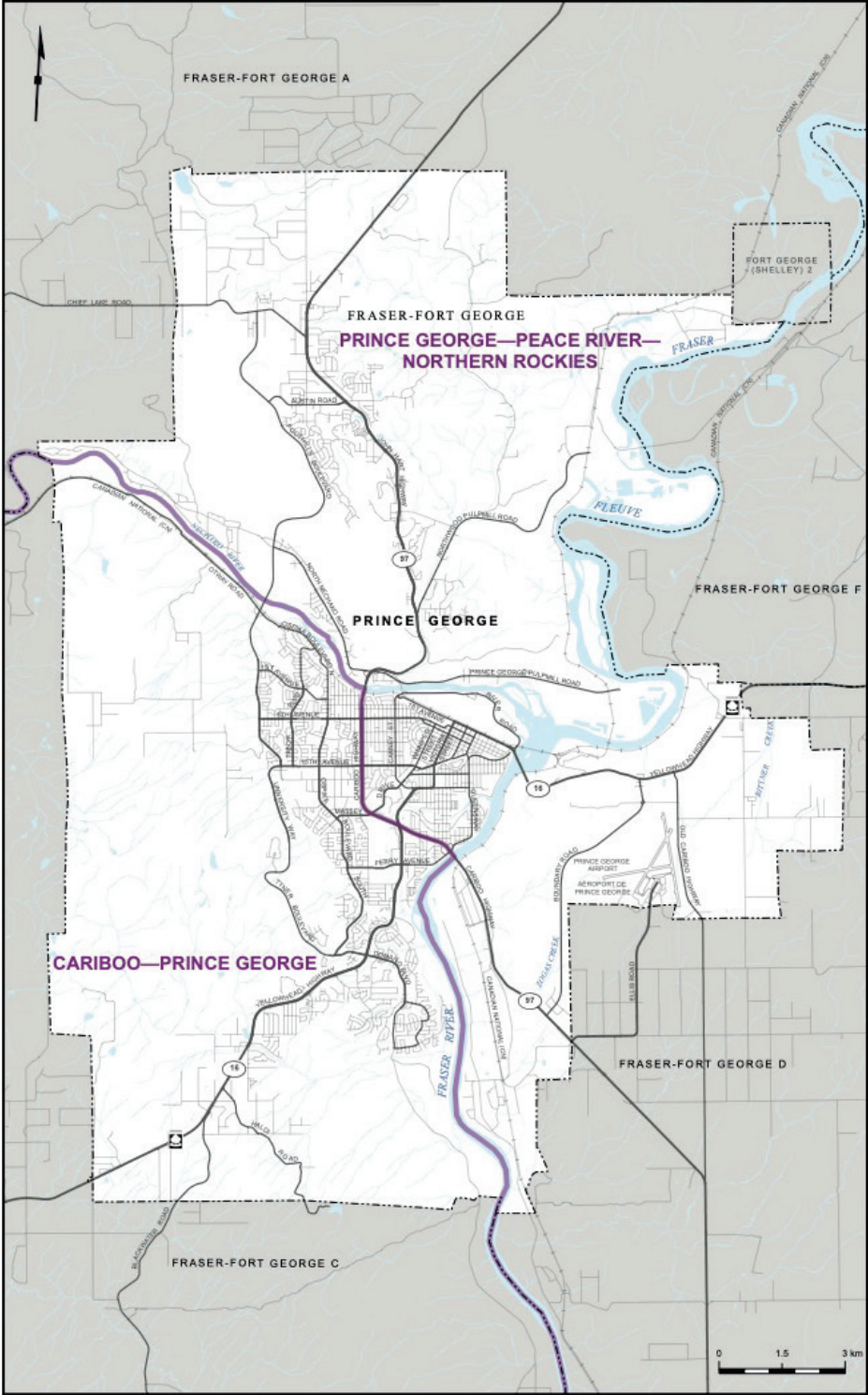


Map  
10

# City of Penticton

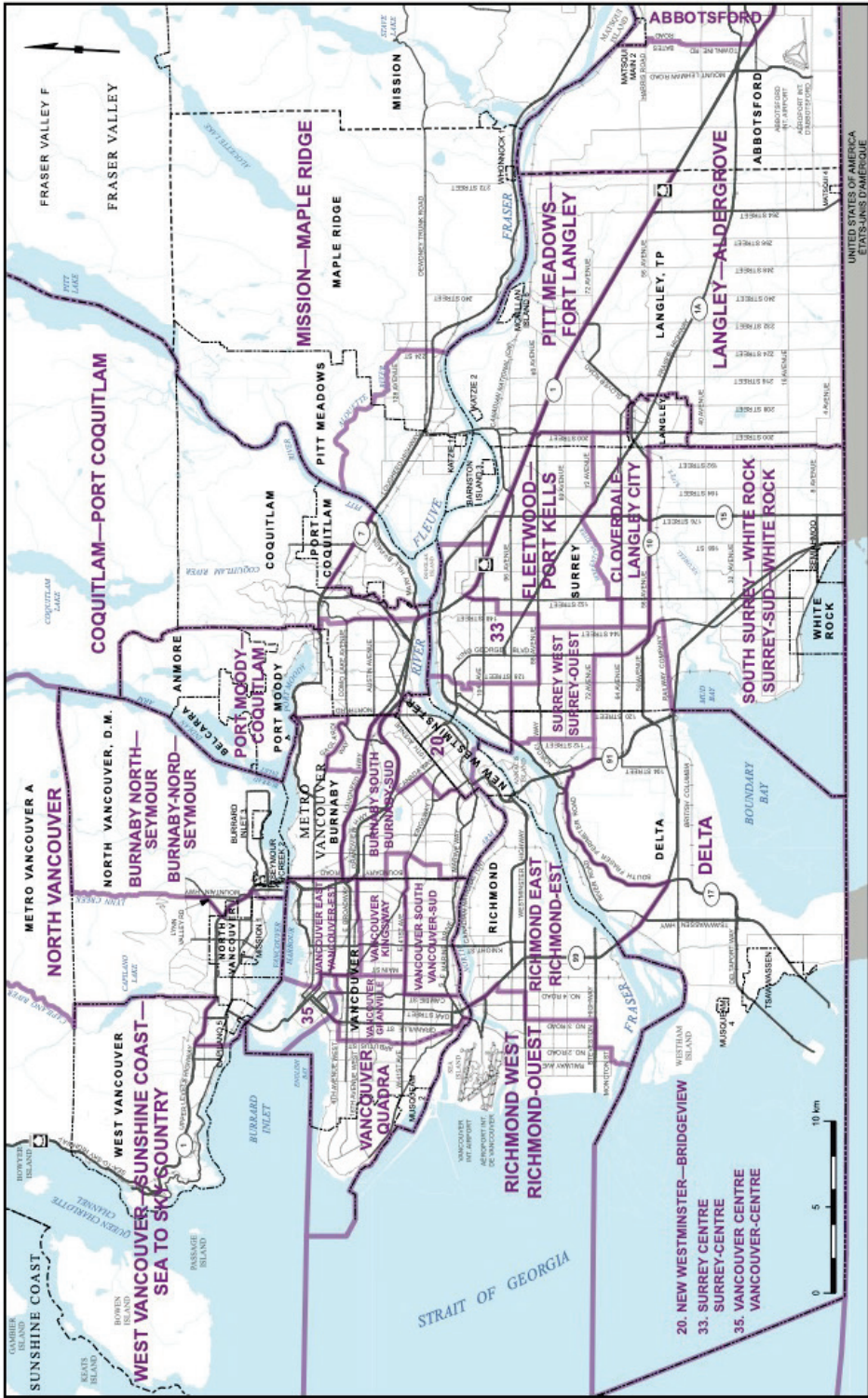


# City of Prince George





# City of Vancouver and Vicinity



# Map 13

# City of Victoria and Vicinity

