





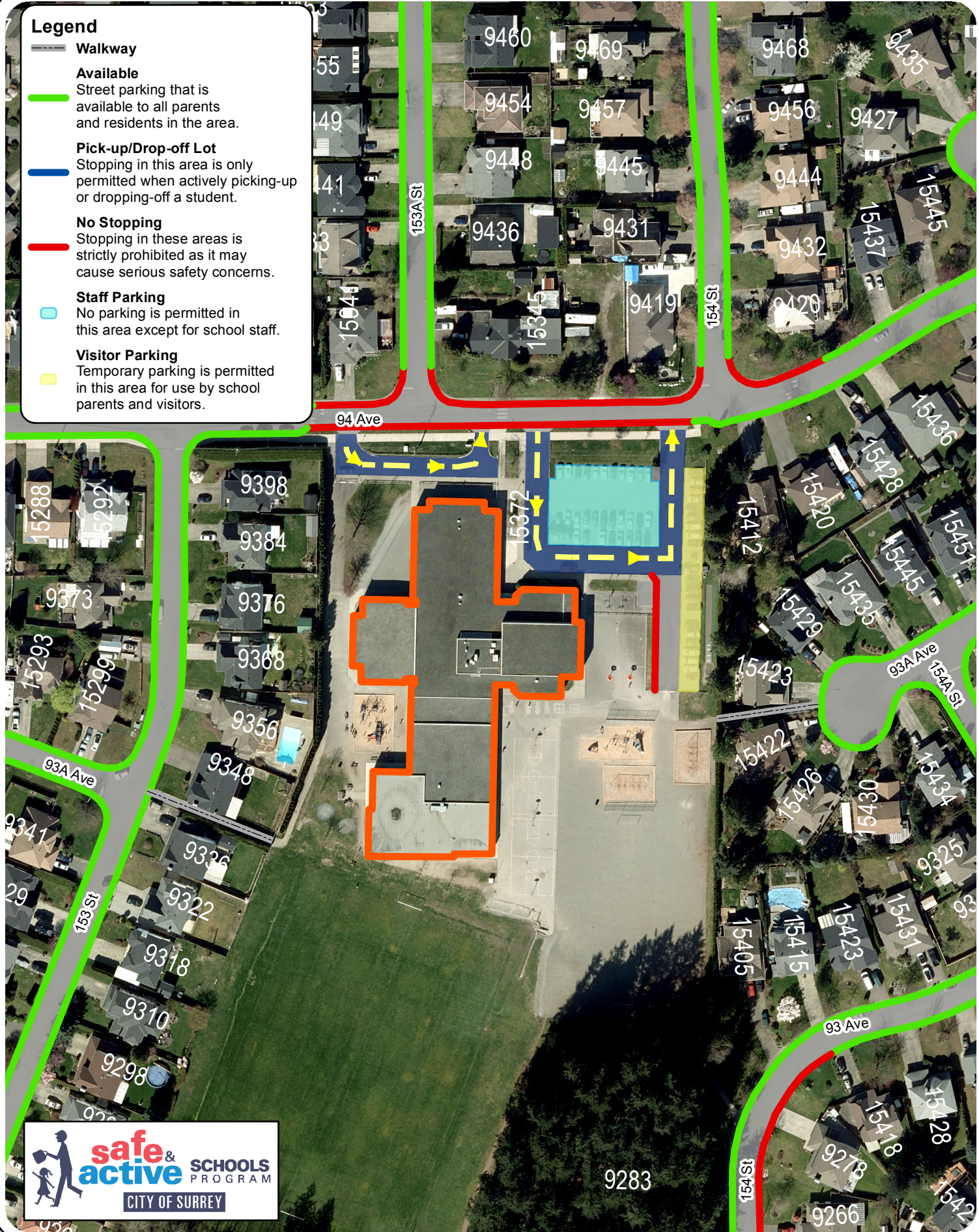
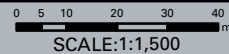


**Legend**

-  **Walkway**
-  **Available**  
Street parking that is available to all parents and residents in the area.
-  **Pick-up/Drop-off Lot**  
Stopping in this area is only permitted when actively picking-up or dropping-off a student.
-  **No Stopping**  
Stopping in these areas is strictly prohibited as it may cause serious safety concerns.
-  **Staff Parking**  
No parking is permitted in this area except for school staff.
-  **Visitor Parking**  
Temporary parking is permitted in this area for use by school parents and visitors.



**Berkshire Park Elementary School**



The data provided is compiled from various sources and IS NOT warranted as to its accuracy or sufficiency by the City of Surrey. This information is provided for information and convenience purposes only. Lot sizes, legal descriptions and encumbrances must be confirmed at the Land Title Office.

Date of Aerial Photograph: March 30, 2016