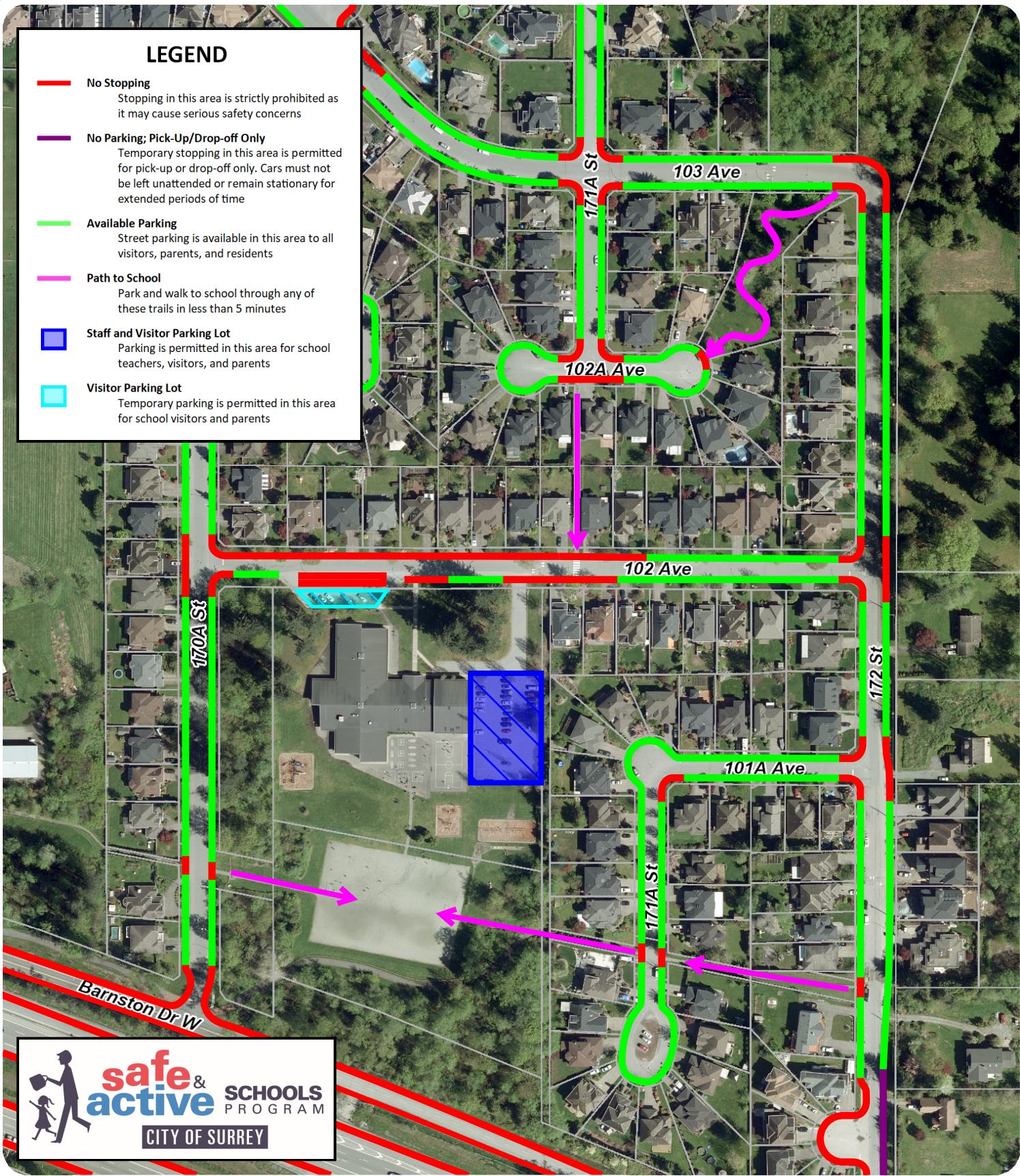


## LEGEND

- **No Stopping**  
Stopping in this area is strictly prohibited as it may cause serious safety concerns
- **No Parking; Pick-Up/Drop-off Only**  
Temporary stopping in this area is permitted for pick-up or drop-off only. Cars must not be left unattended or remain stationary for extended periods of time
- **Available Parking**  
Street parking is available in this area to all visitors, parents, and residents
- **Path to School**  
Park and walk to school through any of these trails in less than 5 minutes
- **Staff and Visitor Parking Lot**  
Parking is permitted in this area for school teachers, visitors, and parents
- **Visitor Parking Lot**  
Temporary parking is permitted in this area for school visitors and parents



# Parking Regulations: Bothwell Elementary School



The data provided is compiled from various sources and IS NOT warranted as to its accuracy or sufficiency by the City of Surrey. This information is provided for information and convenience purposes only. Lot sizes, legal descriptions and encumbrances must be confirmed at the Land Title Office.

Date of Aerial Photograph: March 2017