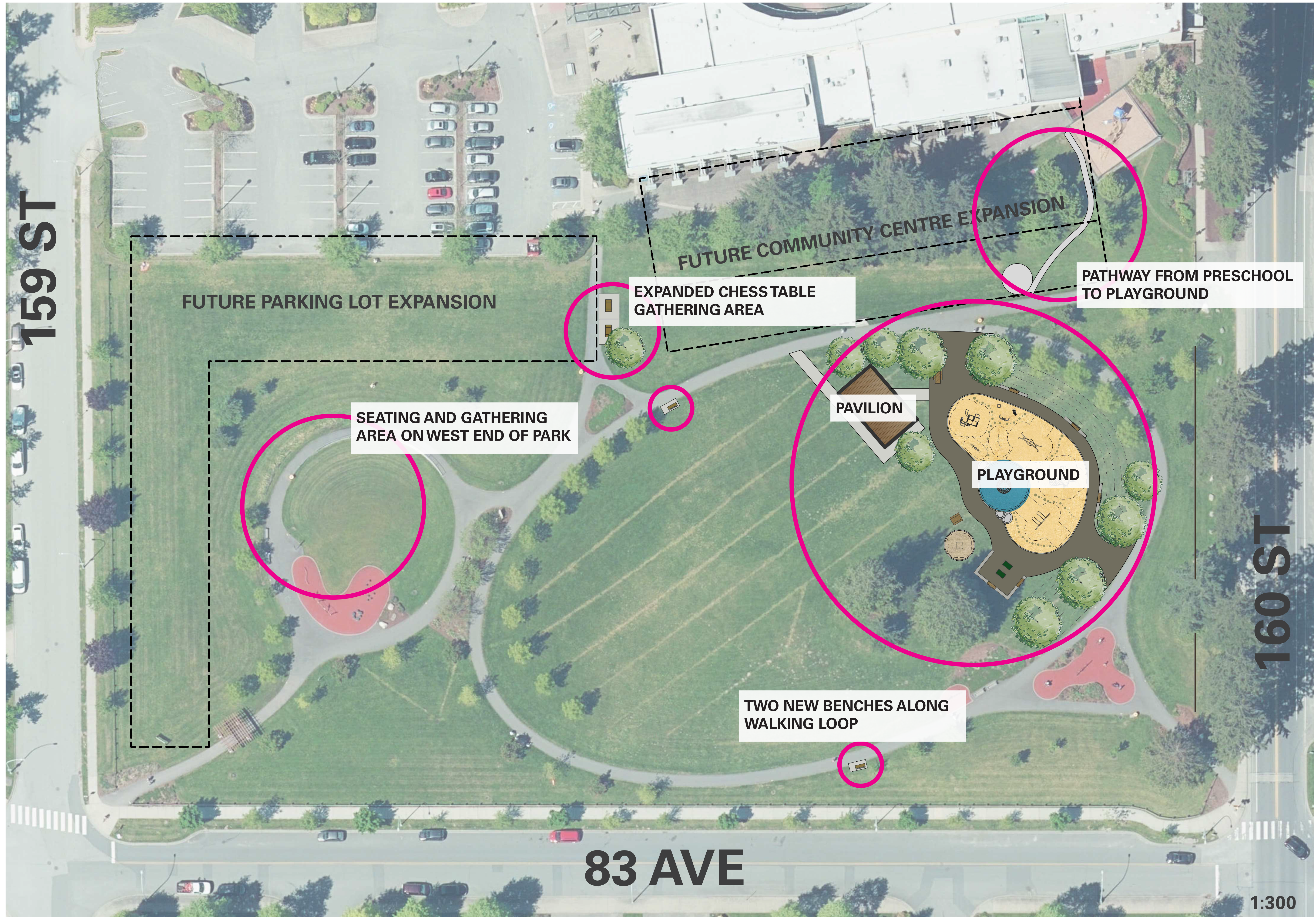


# Francis Park Playground and Pavilion

- Proposed Park Additions -



## EXAMPLES



**A PING PONG**

- multi-age
- popular in community centre
- seating nook



**B WOOD CLIMBER/  
PARKOUR ELEMENTS**

- tot sized wood climbing elements
- balance beam
- somersault bar
- platforms



**C LOG STEPPERS**

- lava game (don't step on the ground)
- lead from one area to another and through playground



**D SAND PLAY**

- concrete curb or robinia log edging
- shaded by and located near mature trees
- surrounded by grass
- bench nearby
- sand table



**E EARTH BERM**

- 0.75 - 1.00m tall
- Max 15% slope
- act as barrier for playground
- natural play elements, like rock steps



**F FORMAL SEATING**

- concrete retaining seat wall, with bench tops
- bench with end and middle arm rests
- recess underneath seat
- straight for ease of construction/cost effective



**G PICNIC / BENCH**

- accessible picnic table
- benches

# Francis Park Playground and Pavilion

- Detailed Concept Plan -



\* Images are for conceptual use only as specific products have not yet been selected.

## EXAMPLES



**H DUNE BUGGY**

- imaginative and exploratory play
- climbing (for tots)



**I LARGE SPINNER**

- central focal element
- accessible
- many ways to play: swinging, spinning, pushing, climbing, sitting, observing
- on rubber play surfacing for best accessibility



**J SWINGS**

- tot/preschool and youth swings
- dish swing for all ages (accessible)
- 1 belt, 1 bucket seat
- facing other play equipment and open lawn



**K TOT HOUSE**

- imaginative and exploratory play
- small slide for tots
- wood/metal combo
- open sitelines



**L YOUTH STRUCTURE**

- small tower structure with slide, rope/net climber and multiple ways up
- open for sitelines
- stainless steel slide



**M MUSIC**

- 1 Xylophone
- 2 Drum
- 3 Chimes

- ensure music isn't too loud
- tot/preschool size
- position in semicircle