

1 Welcome!

Francis Park Playground and Performance Space Open House

Background Information

This open house focuses on the planning and design of a playground and performance space at Francis Park. Please share your ideas and comments to help shape these new park spaces!

1. Sign in, take a comment form and view the displays.

We encourage you to provide your ideas and input by completing the comment form.

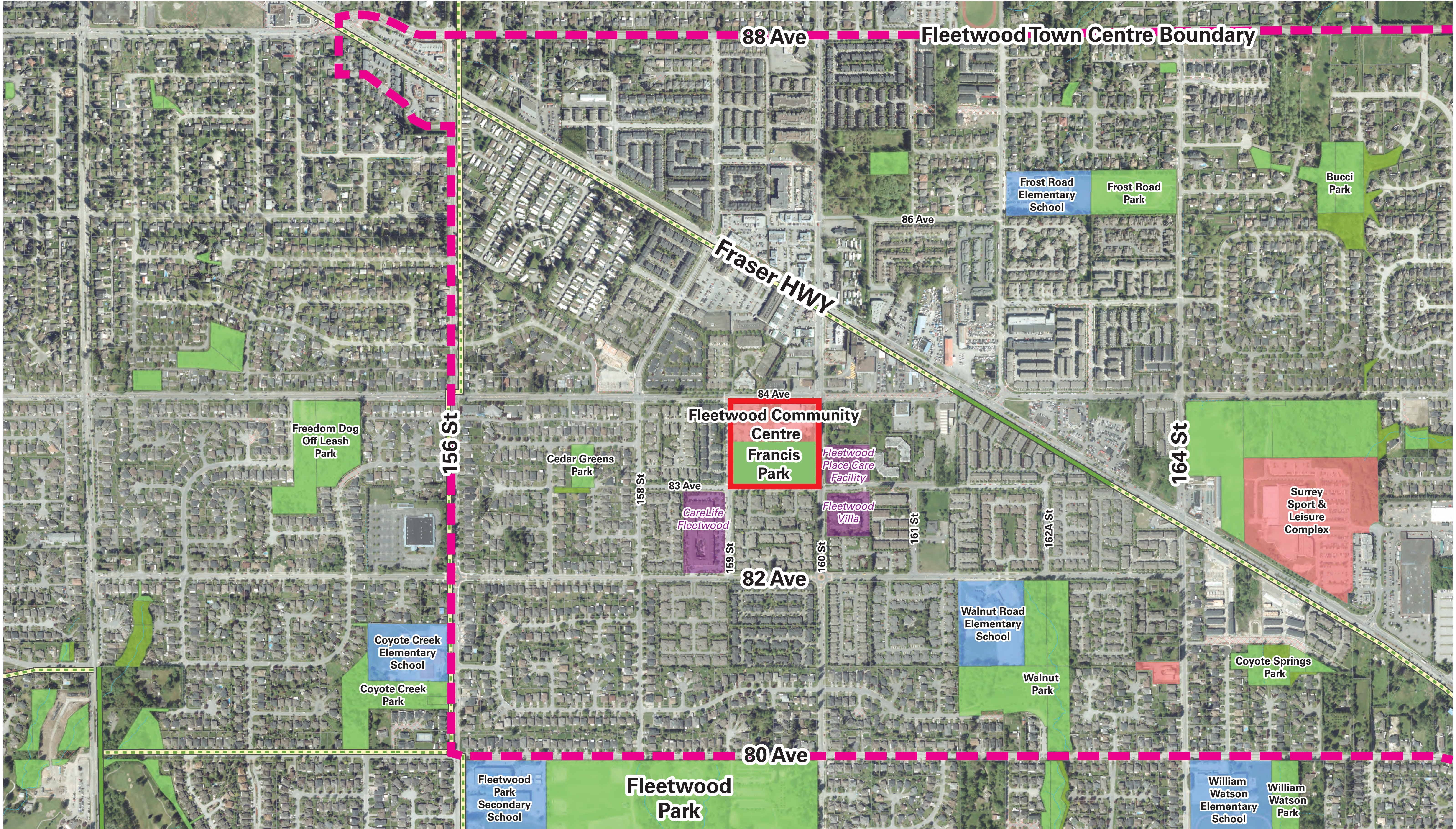
Project team members are available to provide you with information and to answer your questions about these new park spaces.

2. On Board #2, place a coloured dot to indicate where you live on the map.



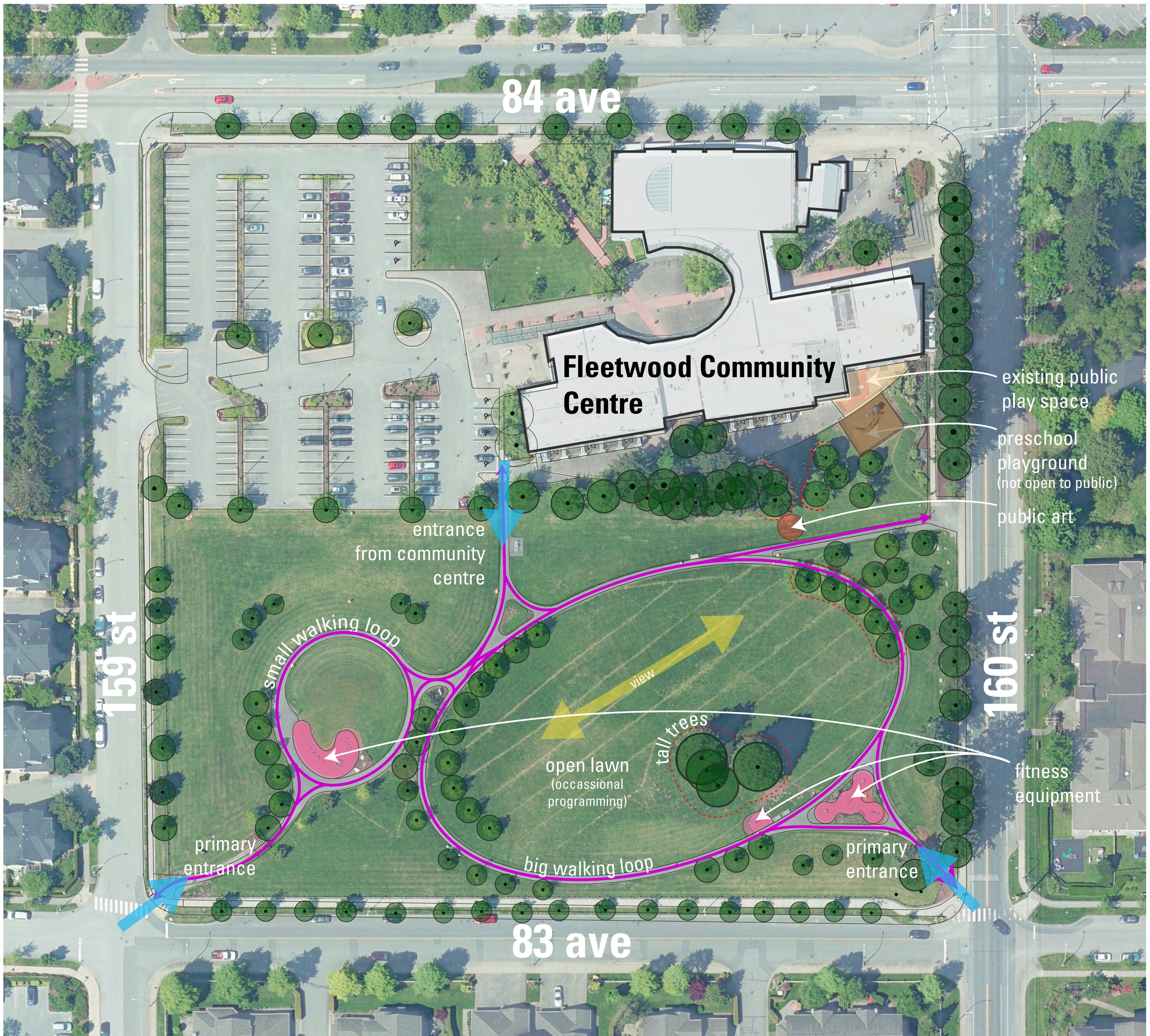
Show us Where you Live

Place a coloured dot to indicate approximately where you live on the map. If you live outside the area shown on the map, please place your dot in the white space around the map.



Site Analysis

Since Francis Park is already developed and actively used, there are considerations to take into account when designing the playground and performance space.



Opportunities

- playground and performance space will support Community Centre programs and the Fleetwood Community Festival
- multifunctional performance space
- shade from large coniferous trees
- open lawn for audience space

Constraints

- playground and performance space should be near and connect to preschool playground and Community Centre respectively
- care required around root zones of all trees
- buffer space required between walking loop and playground because loop is very active
- orientation is limited (possible sun blindness for performers or audience)

Concept Plan



Playground

North east corner of the open lawn

- a) easy to access from Community Centre & pre-school
- b) shaded by mature trees
- c) allows large half of the lawn open to remain

Possible Characteristics:

- play zones
- tot, youth, accessible/inclusive and multigenerational elements
- separated from walking loop by berm

Performance Space

OPTION 1

South side of lawn

- a) nestled by mature trees
- b) separate from playground
- c) close to road for loading/unloading

OPTION 2

East side of lawn

- a) west facing (potential sun issue)
- b) close to playground
(use as shaded seating for playground)

OPTION 3

North side of lawn

- a) easy access from Community Centre
- b) separate from playground

Possible Characteristics:

- permanent structure
- shelter from wind and rain
- raised stage
- structural form that amplifies sound
- power
- hanging bar for lights with power
- ramp & stairs
- multi-functional
- built-in seating
- storage
- temporary loading zone
- surface game pattern on stage floor

Potential Playground Elements

The Fleetwood Community Centre and the community have expressed interest in having a playground in Francis Park.

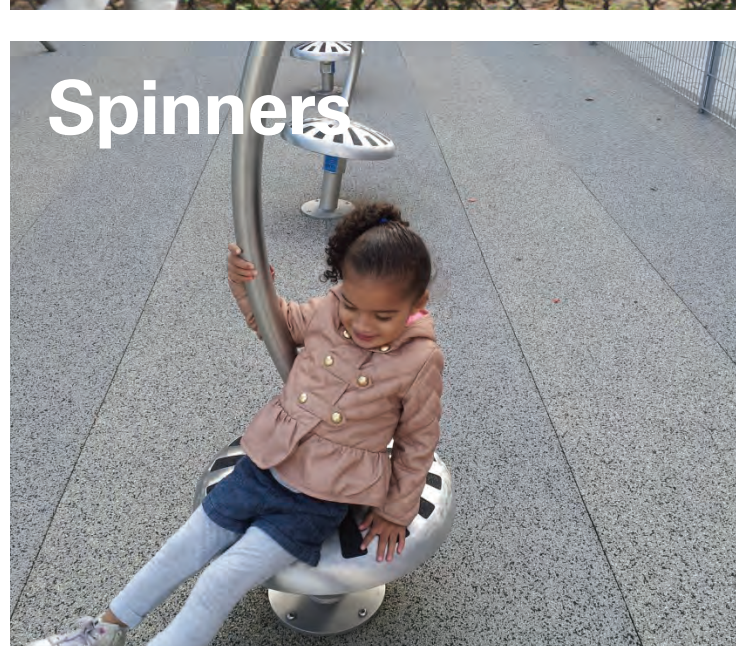
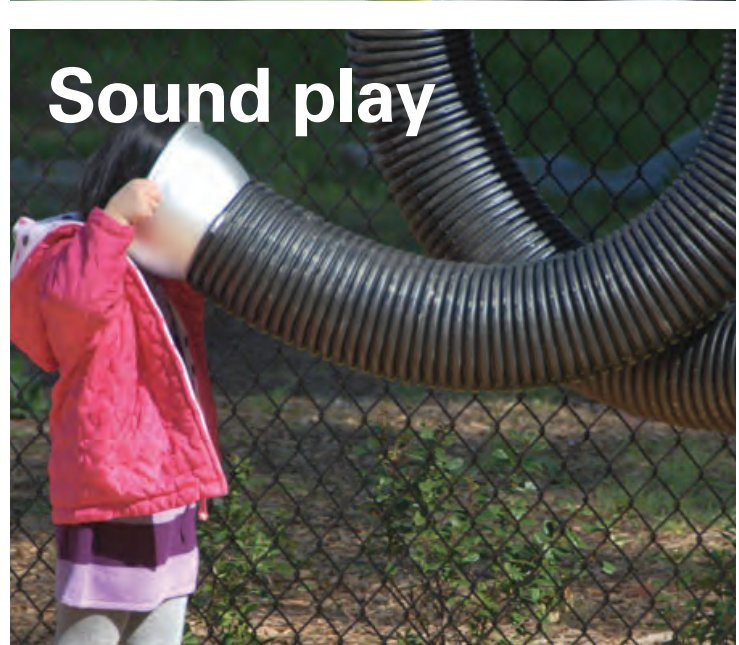
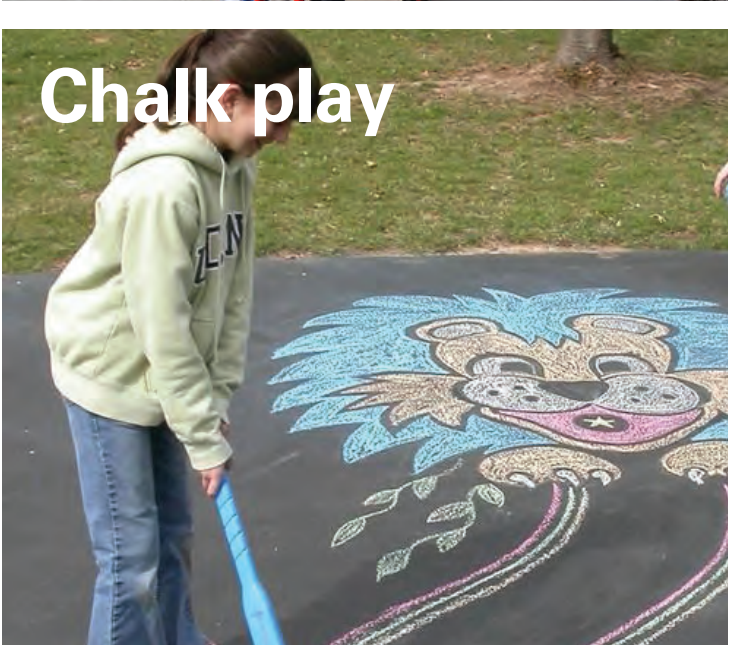
We propose a playground with multiple play zones, including tot, youth, accessible/inclusive and multigenerational play elements.

With this in mind, what kind of elements would you like to see in this playground? Tell us when filling out your comment form.

Youth Elements



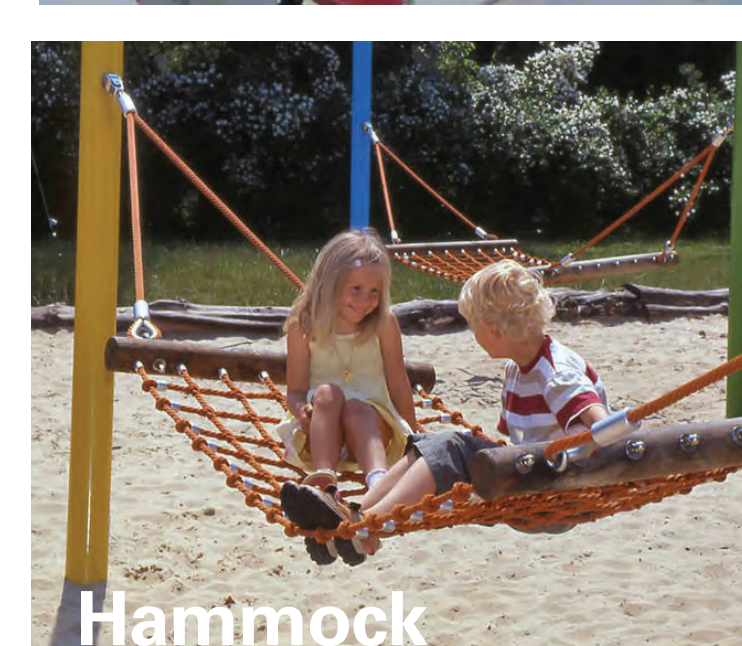
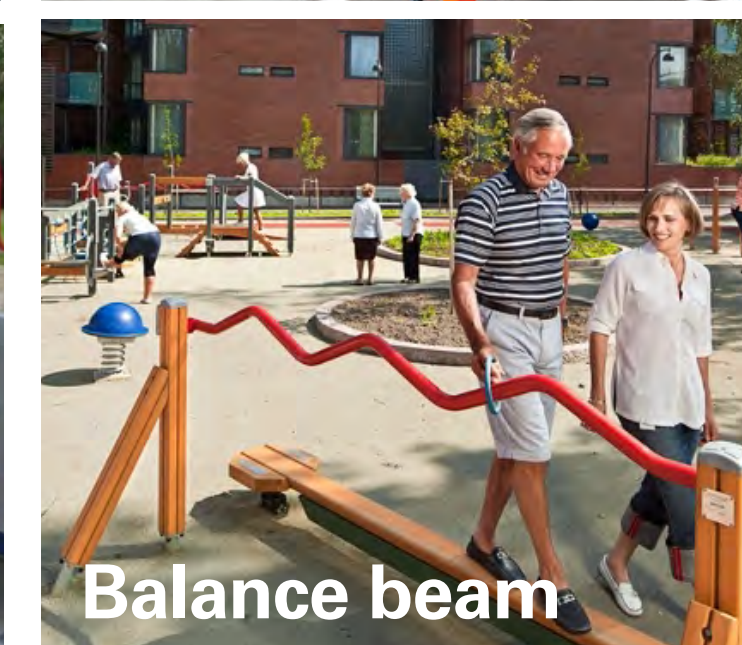
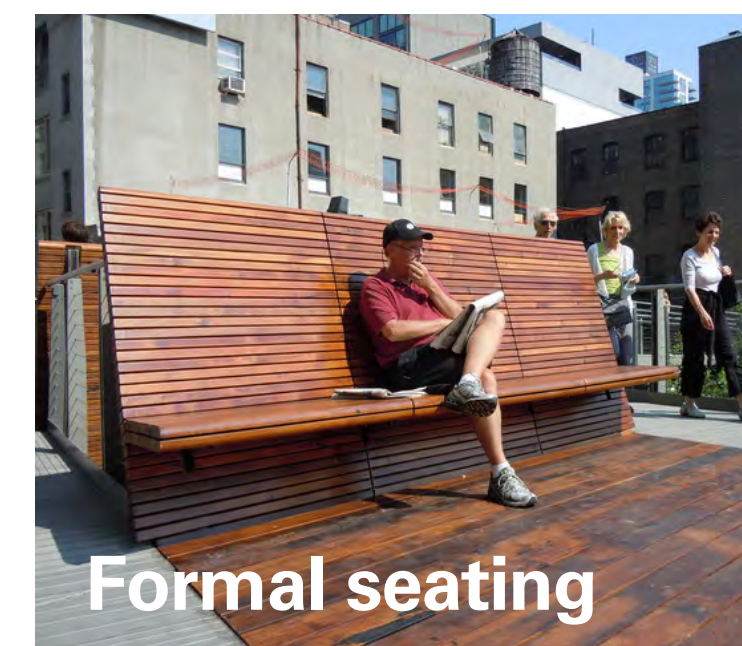
Tot Elements



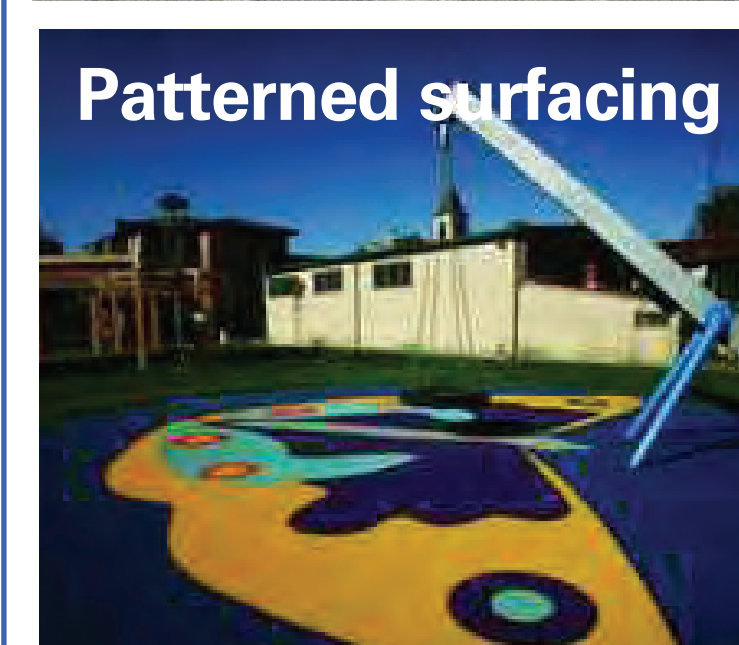
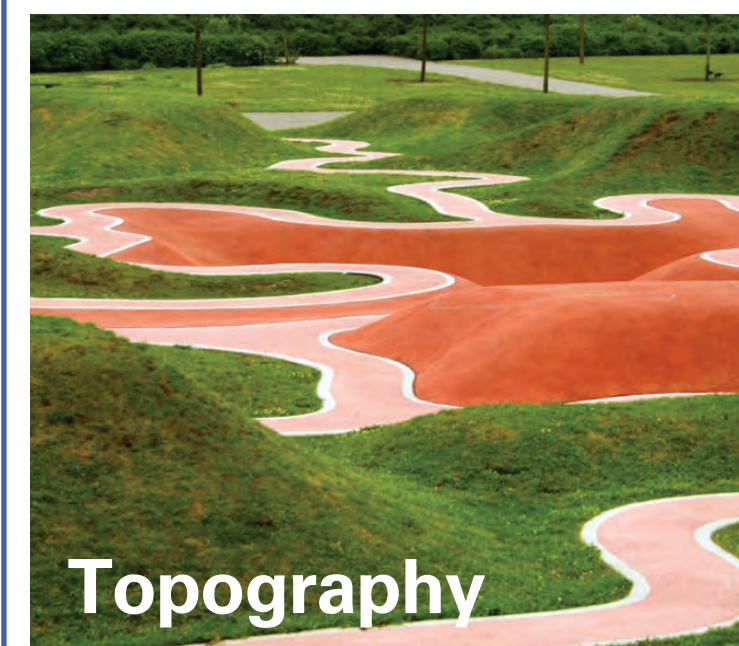
Accessible Elements



Multigenerational Elements



Other Elements

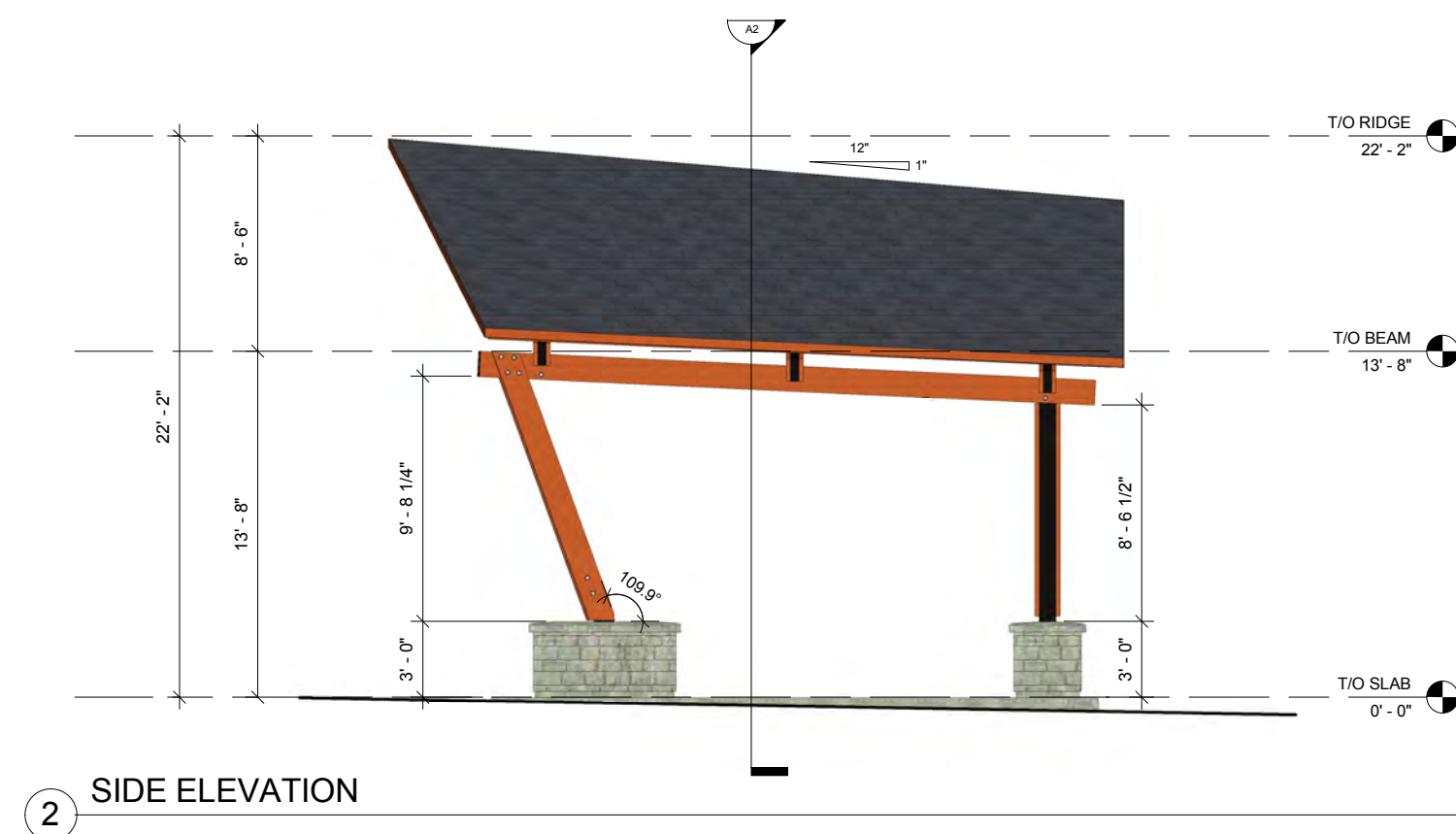


Bandstand History

Where it all began

In 2015, the Fleetwood Community Association and community members approached the City about developing a Bandstand in Francis Park. They wanted a small structure that would support intimate programs such as a weekly seniors meet up group to play music and socialize. They proposed the preliminary design and technical considerations below.

Proposed preliminary design



Community Feedback

When reaching out to the community, the Fleetwood Community Association received the following feedback which will be taken into consideration in the detailed design and coordination of events.

Support

- "provide many opportunities for the community, young and old, to gather and celebrate the cultural and social fabric of the neighbourhood"
- "it will truly benefit our seniors and the Fleetwood community as a whole"
- "this Bandstand aligns well with the general uses and purpose of this park and would be a good cultural addition to the community"

Concerns

- vandalism or undesirable use at night
- operational management challenges
- frequency of use
- volume control
- types of music and events
- parking/traffic issues (congestion and increased volume) during event times

Pending public approval, staff will carry out detail design incorporating feedback.

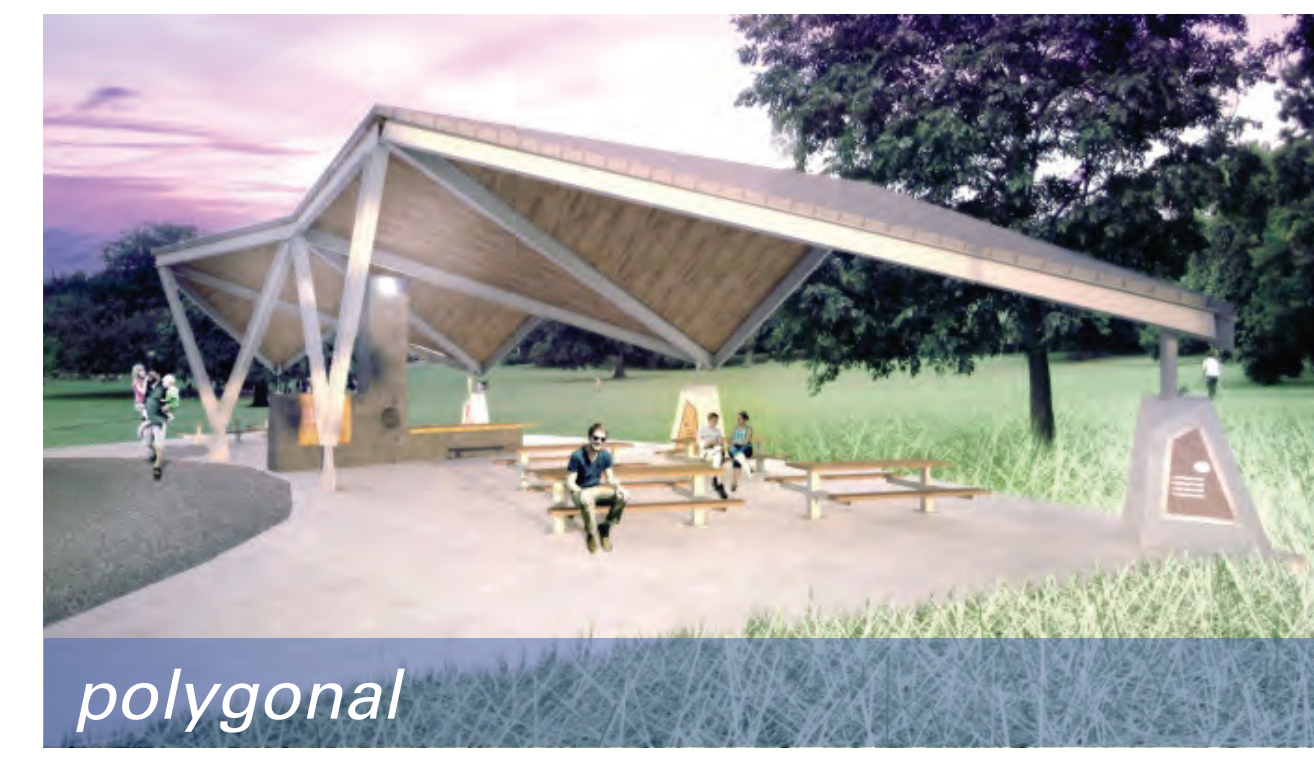
Technical Considerations

- 40' x 24' at-grade slab floor
- minimal electrical service
- vandal-proof design
- no bird roosting areas
- gutter, splash pan & water leader
- similar aesthetic to existing Trellis
- wood and steel roof structure
- hidden wiring
- granite clad columns under 3' tall to provide sight lines for people sitting in a chair

Performance Space Ideas

Building on the 2015 design presented by the Fleetwood Community Association and the community’s feedback, we propose a multifunctional structure for small to medium performances and social/community gatherings.

POSSIBLE STYLES *What architectural style do you like?*



POSSIBLE CHARACTERISTICS *What characteristics would you like to see included in the performance space?*

SIZE

- small size
- medium size

STRUCTURE

- permanent structure
- raised stage
- stairs double as seating
- accessible ramp
- acoustic structure (amplification)
- storage
- electrical & conduit for wiring
- built-in seating
- surface game pattern on floor (i.e. chess)
- double sided

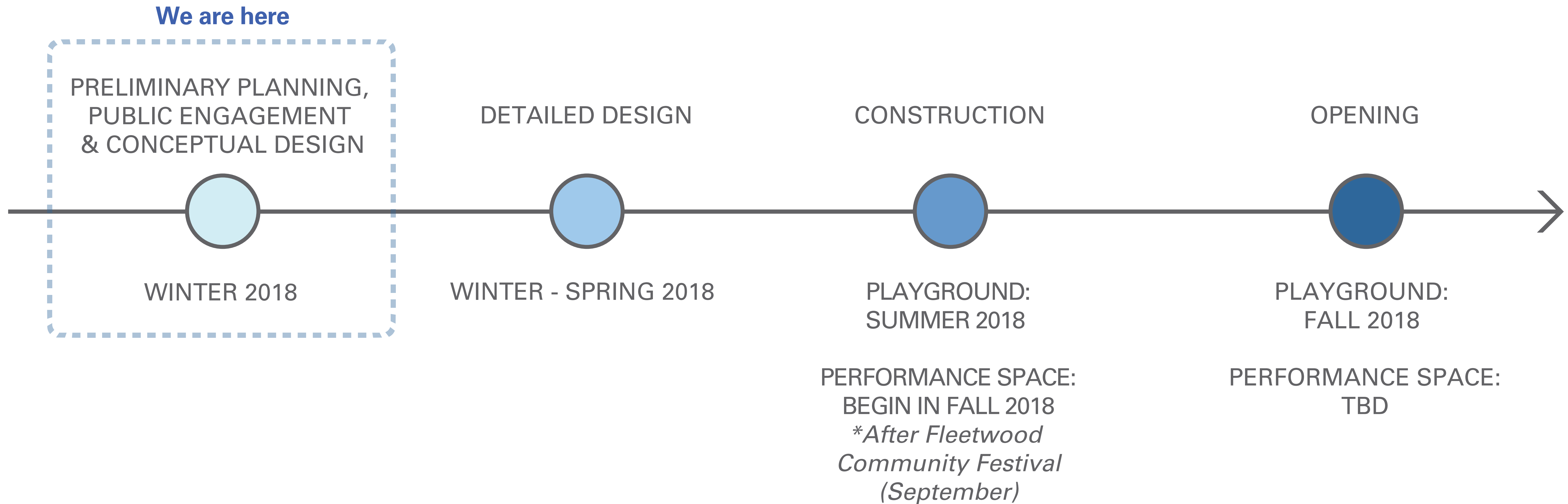
POTENTIAL PROGRAMS

- Seniors Jammers
- Community gatherings
- Fleetwood Community Festival
- Theatre performances
- Live music
- Movie night
- Farmers Market
- Seasonal events (i.e. Remembrance Day)
- Games gatherings
- Tea parties

OTHER

- north or west facing (to avoid sun blindness for performers)
- sheltered from the elements
- temporary loading/unloading zone

What is next?



BEFORE YOU LEAVE

Remember to fill out a comment form. Your suggestions and ideas are greatly appreciated and will form the basis for our detailed design phase going forward.

In a rush? Drop off or mail your comment form to City Hall (13450 104 Avenue, Surrey, BC, V3T 1V8) **by February 20**.
Or, fill in the comment form online at www.surrey.ca/newparks.

WANT TO STAY INVOLVED?

Write your contact info on the sign up sheet to get updates about the project.

For more info:

Visit www.surrey.ca/newparks

Email parksrecculture@surrey.ca

Call 604-501-5050