

CITY OF SURREY

BY-LAW NO. 13439

A by-law to amend Surrey Zoning By-law, 1993, No. 12000,  
as amended.

.....

The Council of the City of Surrey, in open meeting assembled, ENACTS AS FOLLOWS:

1. Surrey Zoning By-law, 1993, No. 12000, as amended, is hereby further amended, pursuant to the provisions of Section 903 of the Municipal Act R.S.B.C. 1996 Chapter 323, as amended, by changing the classification of the following parcels of land, presently shown upon the maps designated as the Zoning Maps and marked as Schedule "A" under Part 3 of Surrey Zoning By-law, 1993, No. 12000, as amended, as follows:

FROM "ONE-ACRE RESIDENTIAL ZONE (RA)" TO  
"HALF-ACRE RESIDENTIAL GROSS DENSITY ZONE (RH-G)"

All or portions of the lands shown in heavy outline on Survey Plan attached hereto and forming a part of this By-law as Schedule A, certified correct by Allan Olsen, B.C.L.S., on the 25th day of May, 1998, and containing 16,717 square metres, and called Blk. 'A', and more particularly described as follows:

Parcel Identifier: 023-491-728  
Lot 12 Section 17 Township 1 New Westminster District Plan  
LMP29186; and

(13210 - 24 Avenue)

Part Road dedicated on Plan 7239 Section 17 Township 1  
New Westminster District.

(Portion of 132 Street)

2. This By-law shall be cited for all purposes as "Surrey Zoning By-law, 1993, No. 12000, Amendment By-law, 1998, No. 13439."

PASSED FIRST AND SECOND READING on the 1st day of June, 1998.

PUBLIC HEARING HELD thereon on the 29th day of June, 1998.

PASSED THIRD READING on the 29th day of June, 1998.

RECONSIDERED AND FINALLY ADOPTED, signed by the Mayor and Clerk, and sealed with the Corporate Seal on the 13th day of September, 1999.

\_\_\_\_\_MAYOR

\_\_\_\_\_CLERK

h:\by-laws\by-laws\clk13439.blw

Schedule A

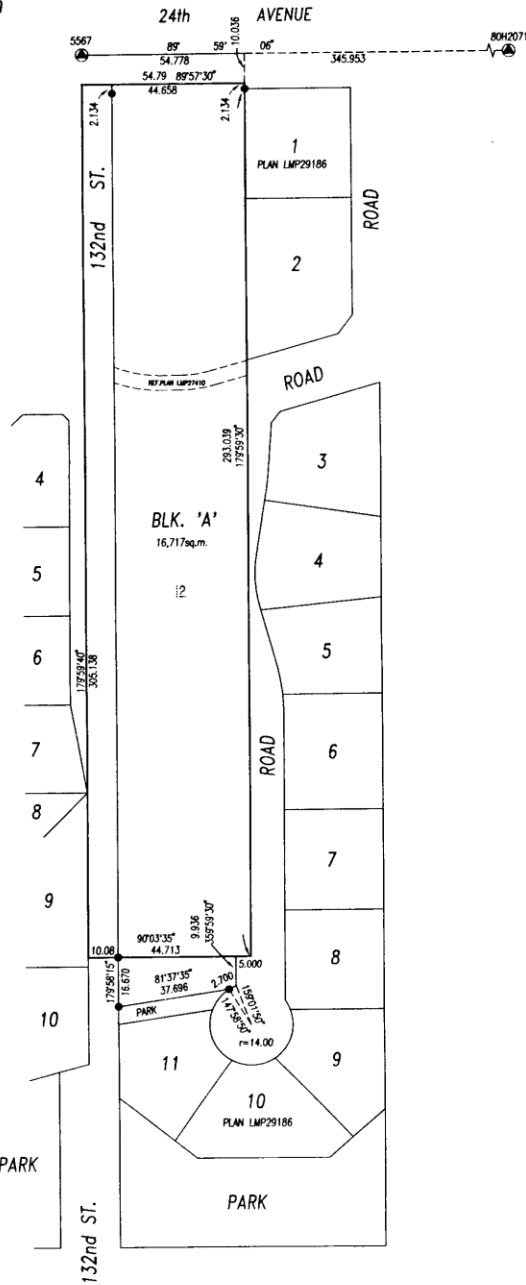
SURVEY PLAN TO ACCOMPANY CITY OF SURREY BYLAW NUMBER 13439 OF LOT 12 LMP29186 AND PORTIONS OF ROAD DEDICATED ON PLAN 7239 ALL OF SEC. 17 Tp.1 N.W.D.

SCALE - 1:1250



INTEGRATED SURVEY AREA No 1, SURREY, B.C.  
GRID BEARINGS ARE DERIVED FROM OBSERVATIONS  
BETWEEN CONTROL MONUMENTS 5567 AND 8042071.

THIS PLAN SHOWS GROUND LEVEL MEASURED DISTANCES.  
PRIOR TO COMPUTATION OF UTM COORDINATES,  
MULTIPLY BY THE COMBINED FACTOR 0.9995910.



- LEGEND
- INDICATES OLD IRON POST FOUND
  - OLD LEAD PLUG FOUND
  - IRON POST SET
  - LEAD PLUG SET
  - ⊙ OLD CONTROL MONUMENT FOUND
  - U UNREGISTERED
  - sq. m SQUARE METRES
  - ha. HECTARES

*Alan O. ...*

CERTIFIED CORRECT  
Dated this 25<sup>th</sup> day of MAY, 1998  
THIS DOCUMENT IS NOT VALID UNLESS  
ORIGINALLY SIGNED AND SEALED. ©