

CITY OF SURREY

BY-LAW NO. 15544

A By-law to close and to remove the dedication
of a highway of portions of 180 Street at 69/70 Avenues.

.....

WHEREAS pursuant to Subsection 40(1)(a) of the *Community Charter*, S.B.C. 2003, c. 26, the Council may, by by-law, close all or part of a highway that is vested in the municipality to all or some types of traffic;

AND WHEREAS pursuant to Section 40(2) of the *Community Charter*, S.B.C. 2003, c. 26, the Council may, by by-law, remove the dedication of a highway that has been closed by a by-law under Subsection 40(1)(a).

NOW THEREFORE the Council of the City of Surrey in open meeting assembled, ENACTS as follows:

1. Those portions of road lying in Section 17, Township 8, New Westminster District shown outlined in heavy black line and hatched on a Reference Plan attached hereto, and forming part of this by-law, duly signed by the Mayor and Clerk, prepared by Grant Butler, B.C.L.S. on the 30th day of June, 2004, and more particularly described as follows:

That portion of road dedicated on Reference Plan 14568, containing 122 square metres and called Parcel "1";

That portion of road dedicated on Plan 1510, containing 35.5 square metres and called Parcel "2";

That portion of road dedicated on Plan 1510, containing 31.2 square metres and called Parcel "3";

That portion of road dedicated on Plan 1510, containing 41.0 square metres and called Parcel "4";

That portion of road dedicated on Plan 1510, containing 117 square metres and called Parcel "5"

(hereinafter referred to as those portions of 180 Street)

shall be closed to traffic.

2. The dedication as highway be removed of said portions of 180 Street.
3. This By-law may be cited for all purposes as "Surrey Close and Remove the Dedication of Highway of Portions of 180 Street at 69/70 Avenues By-law, 2004, No. 15544".

READ A FIRST, SECOND AND THIRD TIME on the 15th day of November, 2004.

NOTICE OF INTENTION

ADVERTISED on the 20th and 21st day of November and on the 27th and 28th day of November, 2004, in the SURREY LEADER/PEACE ARCH Community newspaper.

RECONSIDERED AND FINALLY ADOPTED, signed by the Mayor and Clerk, and sealed with the Corporate Seal on the 29th day of November, 2004.

_____ **MAYOR**

_____ **CLERK**

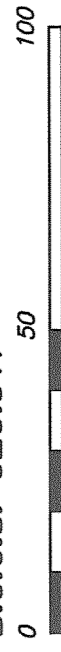
PLAN BCP

**REFERENCE PLAN TO ACCOMPANY CITY OF SURREY
HIGHWAY DEDICATION CANCELLATION BYLAW No. 15544
OF PART OF ROAD DEDICATED ON PLAN 14568
AND PART OF ROAD DEDICATED ON PLAN 1510
ALL OF SECTION 17 TOWNSHIP 8
NEW WESTMINSTER DISTRICT**

DEPOSITED IN THE LAND TITLE OFFICE
AT NEW WESTMINSTER, B.C.,
THIS _____ DAY OF _____ 2004.

PURSUANT TO SECTION 120 OF THE LAND TITLE ACT
AND SECTION 40 OF THE COMMUNITY CHARTER
B.C.G.S. 92G.017

REGISTRAR



SCALE 1 : 1250 DISTANCES ARE METRIC
INTEGRATED SURVEY AREA NO. 1 (SURREY)
NAD83(CSRS)

THIS PLAN SHOWS HORIZONTAL GROUND-LEVEL MEASURED DISTANCES
EXCEPT WHERE OTHERWISE NOTED. TO COMPUTE GRID DISTANCES,
MULTIPLY GROUND-LEVEL DISTANCES BY COMBINED FACTOR 0.9996020

LEGEND

GRID BEARINGS ARE DERIVED FROM OBSERVATIONS BETWEEN
GEODETIC CONTROL MONUMENTS 80H2074 AND 5698

FOUND PLACED

- DENOTES CONTROL MONUMENT
- DENOTES LEAD PLUG
- ▲ DENOTES ANGLE IRON
- DENOTES IRON POST
- Fd. DENOTES FOUND, (NO RECORD)
- Wt DENOTES WITNESS
- m2 DENOTES SQUARE METRES

CITY OF SURREY

MAYOR: DOUGLAS McCALLUM

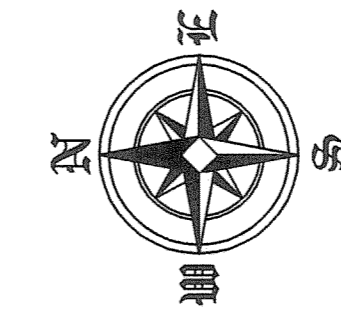
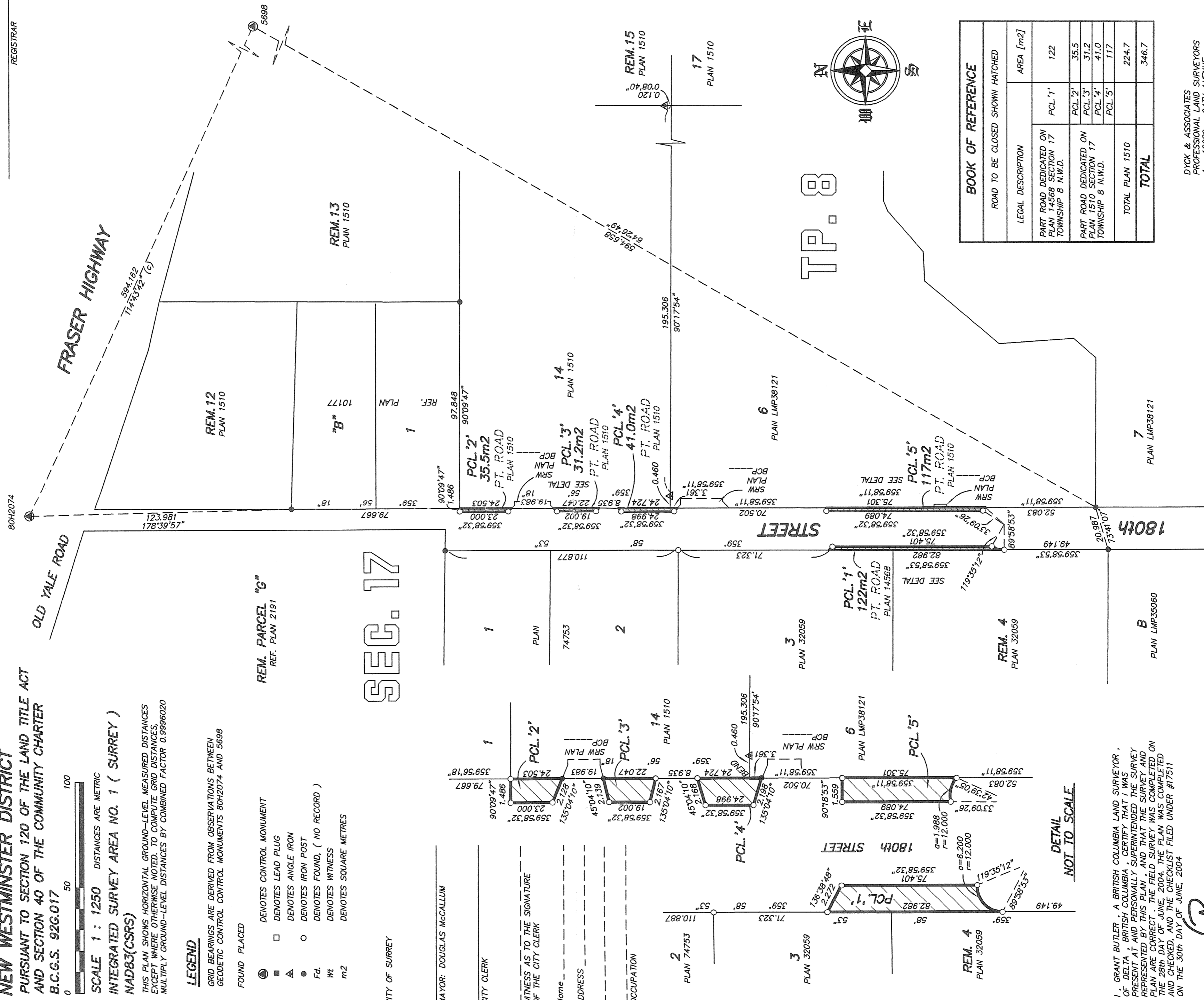
CITY CLERK

WITNESS AS TO THE SIGNATURE
OF THE CITY CLERK

Name _____

ADDRESS _____

OCCUPATION _____



BOOK OF REFERENCE	
LEGAL DESCRIPTION	AREA [m ²]
ROAD TO BE CLOSED SHOWN HATCHED	
PART ROAD DEDICATED ON PLAN 14568 SECTION 17 TOWNSHIP 8 N.W.D.	PCL '1' 122
PART ROAD DEDICATED ON PLAN 1510 SECTION 17 TOWNSHIP 8 N.W.D.	PCL '2' 35.5
	PCL '3' 31.2
	PCL '4' 41.0
	PCL '5' 117
TOTAL PLAN 1510	224.7
TOTAL	346.7

DETAIL
NOT TO SCALE

I, GRANT BUTLER, A BRITISH COLUMBIA LAND SURVEYOR,
OF DELTA, BRITISH COLUMBIA, CERTIFY THAT I WAS
PRESENT AT AND PERSONALLY SUPERINTENDED THE SURVEY
REPRESENTED BY THIS PLAN, AND THAT THE SURVEY AND
PLAN ARE CORRECT. THE FIELD SURVEY WAS COMPLETED ON
THE 28th DAY OF JUNE, 2004. THE PLAN WAS COMPLETED
AND CHECKED, AND THE CHECKLIST FILED UNDER #17511
ON THE 30th DAY OF JUNE, 2004.

GRB

B.C.L.S.

THIS PLAN LIES WITHIN THE GREATER VANCOUVER REGIONAL DISTRICT

DYCK & ASSOCIATES
PROFESSIONAL LAND SURVEYORS
4 - 19089 - 94TH AVENUE
SURREY, B.C. V4N 3S4
TEL: 604-513-9811 FAX: 604-513-2202
FILE: 2702-2
DWG: 2702-2-RD1 REV.2