

CITY OF SURREY

BY-LAW NO. 15774

A by-law to amend "Surrey Zoning By-law, 1993, No. 12000,"
as amended.

.....

The Council of the City of Surrey, in open meeting assembled, ENACTS AS FOLLOWS:

1. Surrey Zoning By-law, 1993, No. 12000, as amended, is hereby further amended pursuant to the provisions of Section 903 of the *Local Government Act*, R.S.B.C. 1996, c.323, as amended, by changing the classification of the following parcels of land, presently shown upon the maps designated as the Zoning Maps and marked as Schedule "A" under Part 3 of Surrey Zoning By-law, 1993, No. 12000, as amended, as follows:

FROM: ONE-ACRE RESIDENTIAL ZONE (RA)
TO: HALF-ACRE RESIDENTIAL GROSS DENSITY ZONE (RH-G)

Parcel Identifier: 011-242-639
Lot 30 Section 16 Township 1 New Westminster District Plan 7336

(13637 - 20 Avenue)

Parcel Identifier: 002-293-307
Lot 31 Section 16 Township 1 New Westminster District Plan 7336

(13617 - 20 Avenue)

Those portions of Road dedicated on Plan 7336, lying in Section 16, Township 1, New Westminster District, shown on a Survey Plan attached hereto and forming part of this by-law as Schedule A, certified correct by R.J. Esson, B.C.L.S. on the 9th day of June, 2005, containing 1,096 square metres and 1,933 square metres and more particularly described as follows:

(Portions of 136 Street)

2. This By-law shall be cited for all purposes as "Surrey Zoning By-law, 1993, No. 12000, Amendment By-law, 2005, No. 15774."

PASSED FIRST AND SECOND READING on the 13th day of June, 2005.

PUBLIC HEARING HELD thereon on the 27th day of June, 2005.

PASSED THIRD READING on the 27th day of June, 2005.

RECONSIDERED AND FINALLY ADOPTED, signed by the Mayor and Clerk, and sealed
with the Corporate Seal on the 30th day of January, 2006.

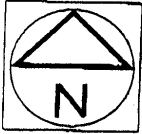
_____ MAYOR

_____ CLERK

SURVEY PLAN SHOWING PORTIONS OF ROAD TO BE CLOSED, DEDICATED ON PLAN 7336, SITUATED IN SECTION 16, TOWNSHIP 1, NEW WESTMINSTER DISTRICT

0 10 20 40 60

SCALE - 1:2000

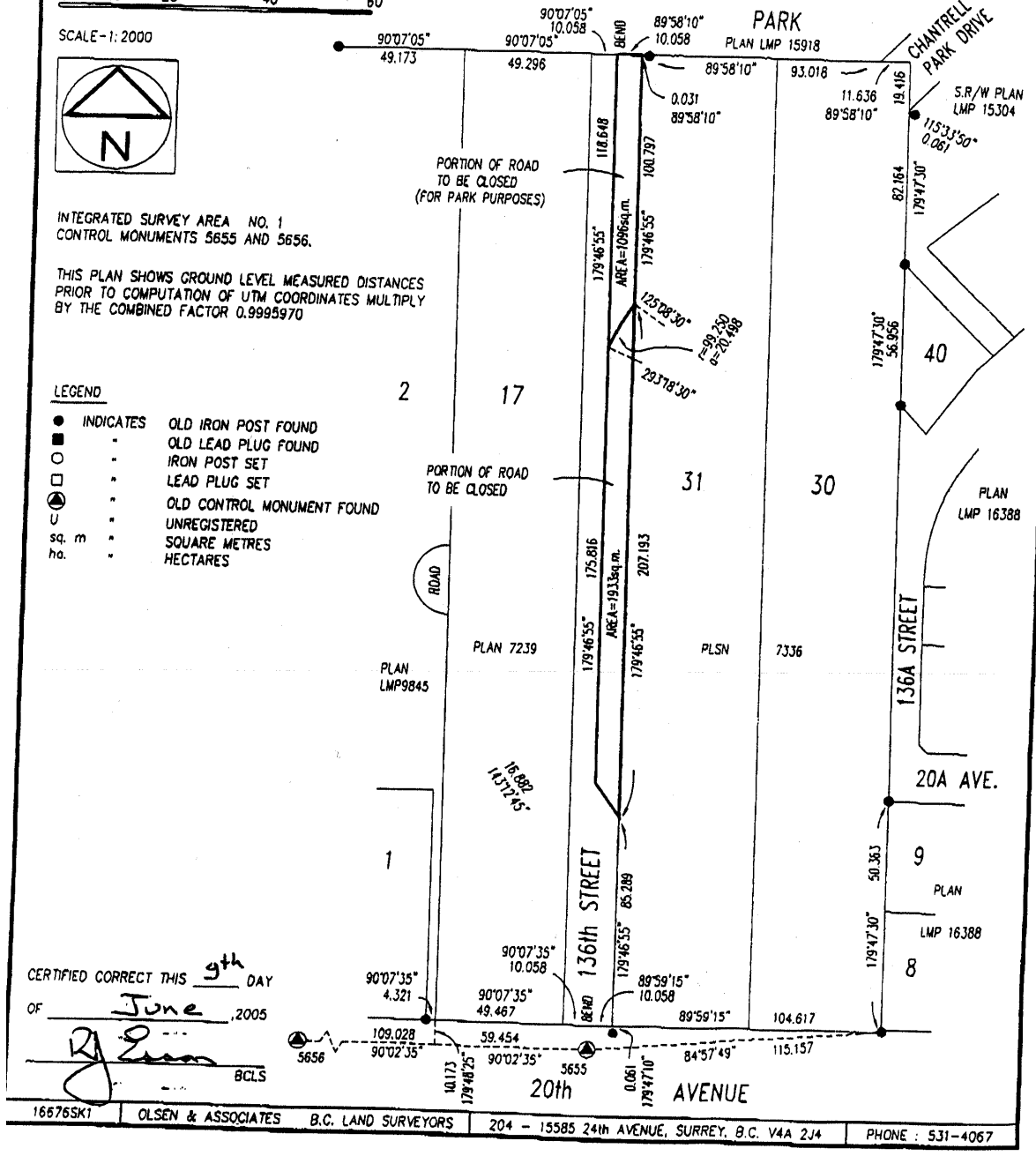


INTEGRATED SURVEY AREA NO. 1
CONTROL MONUMENTS 5655 AND 5656.

THIS PLAN SHOWS GROUND LEVEL MEASURED DISTANCES
PRIOR TO COMPUTATION OF UTM COORDINATES MULTIPLY
BY THE COMBINED FACTOR 0.9995970

LEGEND

- INDICATES OLD IRON POST FOUND
- " OLD LEAD PLUG FOUND
- " IRON POST SET
- " LEAD PLUG SET
- ⊙ " OLD CONTROL MONUMENT FOUND
- U " UNREGISTERED
- sq. m " SQUARE METRES
- ha. " HECTARES



CERTIFIED CORRECT THIS 9th DAY
OF June, 2005
[Signature]
BCLS