

CITY OF SURREY

BY-LAW NO. 16070B

A by-law to amend "Surrey Zoning By-law, 1993, No. 12000,"
as amended.

.....

The Council of the City of Surrey, in open meeting assembled, ENACTS AS FOLLOWS:

1. Surrey Zoning By-law, 1993, No. 12000, as amended, is hereby further amended pursuant to the provisions of Section 903 of the *Local Government Act*, R.S.B.C. 1996, c.323, as amended, by changing the classification of the following parcels of land, presently shown upon the maps designated as the Zoning Maps and marked as Schedule "A" under Part 3 of Surrey Zoning By-law, 1993, No. 12000, as amended, as follows:

FROM: ONE-ACRE RESIDENTIAL ZONE (RA)
TO: HALF-ACRE RESIDENTIAL GROSS DENSITY ZONE (RH-G)

Portion of 135 Street shown on a Survey Plan, attached hereto and forming part of this by-law as Schedule A, certified correct by John Onderwater, B.C.L.S. on the 13th day of July, 2006, containing 370.5 square metres, called Block C and more particularly described as follows:

(Portion of 135 Street)

2. This By-law shall be cited for all purposes as "Surrey Zoning By-law, 1993, No. 12000, Amendment By-law, 2006, No. 16070B".

PASSED FIRST AND SECOND READING on the 24th day of July, 2006.

PUBLIC HEARING HELD thereon on the 11th day of September, 2006.

PASSED THIRD READING on the 14th day of September, 2006.

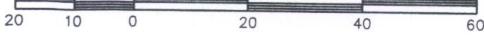
RECONSIDERED AND FINALLY ADOPTED, signed by the Mayor and Clerk, and sealed with the Corporate Seal on the 26th day of June, 2007.

_____ MAYOR

_____ CLERK

**SURVEY PLAN TO ACCOMPANY CITY OF SURREY REZONING BYLAW 160703
OF PART ROAD DEDICATED BY PLAN 15499,
SECTION 17 TOWNSHIP 1 N.W.D.**

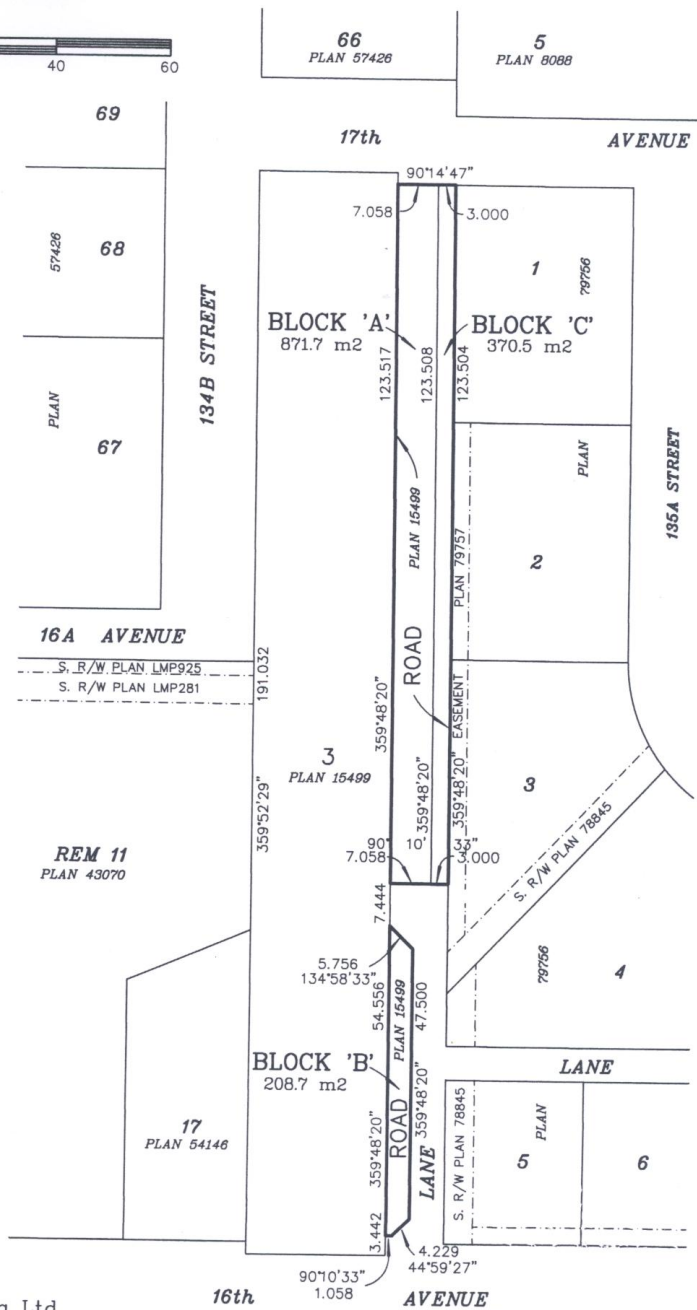
SCALE 1:1000



All Distances are in Metres.

CITY OF SURREY

GRID BEARINGS ARE DERIVED
FROM OCMS 5474 & 5475



SCHEDULE A

Onderwater Land Surveying Ltd.
B.C. Land Surveyors
#104 - 5830 176 'A' STREET
Cloverdale, B.C.
FILE: JS0545_RZ2

*This Plan Lies Within The
Greater Vancouver Regional District*

This plan is certified correct
this 13th day of July, 2006.

© *[Signature]*
B.C.L.S.