

CITY OF SURREY

BY-LAW NO. 16071

A by-law to amend "Surrey Zoning By-law, 1993, No. 12000,"
as amended.

.....

The Council of the City of Surrey, in open meeting assembled, ENACTS AS FOLLOWS:

1. Surrey Zoning By-law, 1993, No. 12000, as amended, is hereby further amended pursuant to the provisions of Section 903 of the *Local Government Act*, R.S.B.C. 1996, c.323, as amended, by changing the classification of the following parcels of land, presently shown upon the maps designated as the Zoning Maps and marked as Schedule "A" under Part 3 of Surrey Zoning By-law, 1993, No. 12000, as amended, as follows:

FROM: ASSEMBLY HALL 1 ZONE (PA-1)
TO: SINGLE FAMILY RESIDENTIAL ZONE (RF)

Portions of land shown on a Survey Plan attached hereto and forming part of this by-law as Schedule A, certified correct by Ken W. Schuurman, B.C.L.S. on the 14th day of July, 2006, and more particularly described as follows,

That Portion of Parcel Identifier: 014-665-204, Parcel A (Reference Plan 1319) Except: Part on SRW Plan 32554 Block C Section 20 Block 5 North Range 2 West New Westminster District, called Block B and containing 567.9 square metres,

(Portion of 12469 - 104 Avenue)

That Portion of Parcel Identifier: 014-665-204, Parcel A (Reference Plan 1319) Except: Part on SRW Plan 32554 Block C Section 20 Block 5 North Range 2 West New Westminster District, called Block B and containing 3,192.3 square metres,

(Portion of 12469 - 104 Avenue)

FROM: ASSEMBLY HALL 1 ZONE (PA-1)
TO: SINGLE FAMILY RESIDENTIAL (12) ZONE (RF-12)

Portion of Parcel Identifier: 014-665-204, Parcel A (Reference Plan 1319) Except: Part on SRW Plan 32554 Block C Section 20 Block 5 North Range 2 West New Westminster District, shown on a Survey Plan attached hereto and forming part of this by-law as Schedule A, certified correct by Ken W. Schuurman, B.C.L.S. on the 14th day of July, 2006,

called Block C and containing 1,215.7 square metres and more particularly described as follows,

(Portion of 12469 - 104 Avenue)

2. This By-law shall be cited for all purposes as "Surrey Zoning By-law, 1993, No. 12000, Amendment By-law, 2006, No. 16071."

PASSED FIRST AND SECOND READING on the 24th day of July, 2006.

PUBLIC HEARING HELD thereon on the 11th day of September, 2006.

PASSED THIRD READING on the 11th day of September, 2006.

RECONSIDERED AND FINALLY ADOPTED, signed by the Mayor and Clerk, and sealed with the Corporate Seal on the 11th day of June, 2007.

_____ MAYOR

_____ CLERK

**SURVEY PLAN TO ACCOMPANY CITY OF SURREY
REZONING BYLAW NO. 1621 OF LOT A (REFERENCE PLAN 1319)
EXCEPT: PART ON STATUTORY RIGHT OF WAY PLAN 32554, BLOCK C
SECTION 20, BLOCK 5 NORTH, RANGE 2 WEST, N.W.D.**

CITY OF SURREY, B.C.G.S. 92G.016



SCALE - 1 : 500
All distances are in metres

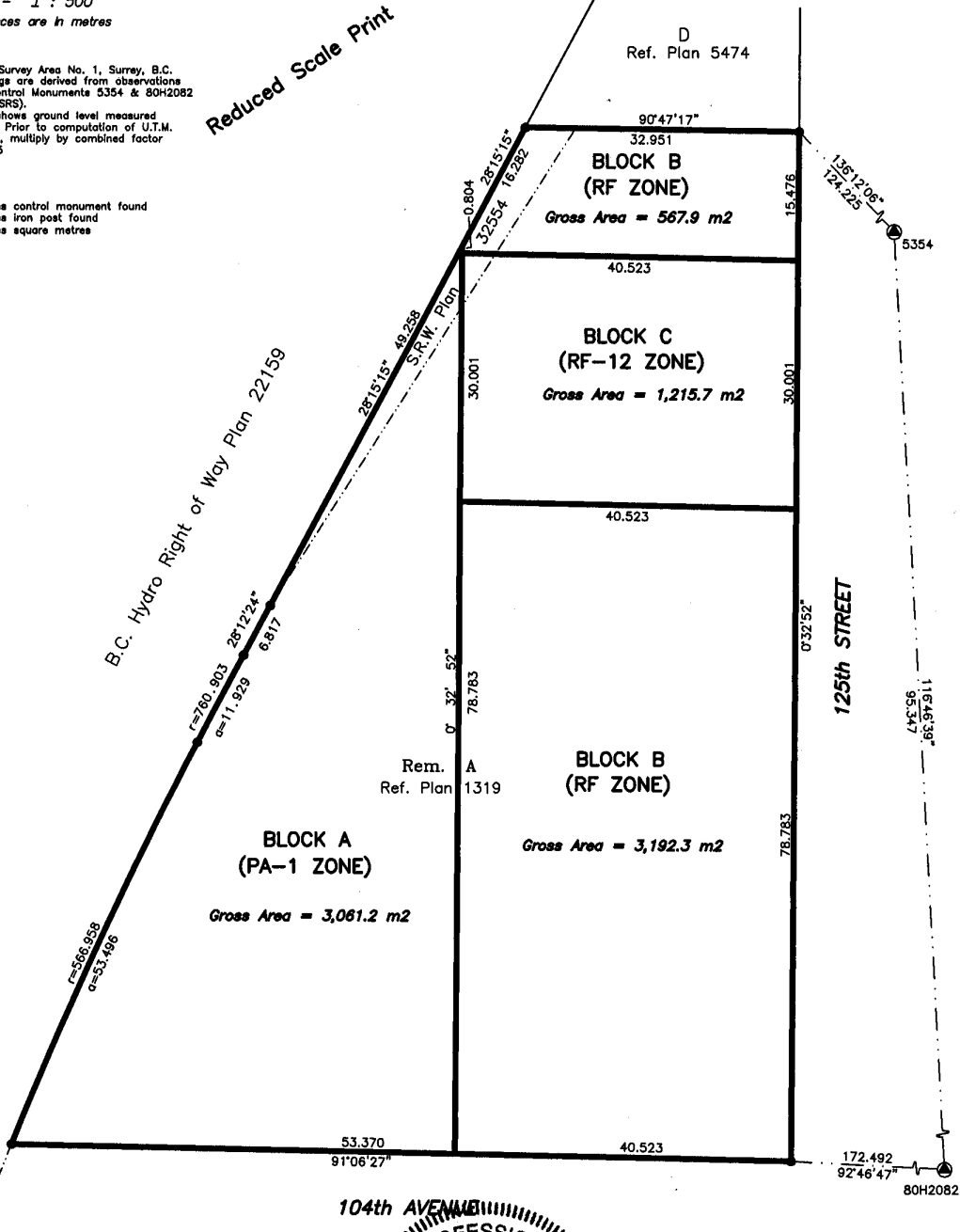
Integrated Survey Area No. 1, Surrey, B.C.
Grid bearings are derived from observations
between Control Monuments 5354 & 80H2082
NAD 83 (CSRS).
This Plan shows ground level measured
distances. Prior to computation of U.T.M.
coordinates, multiply by combined factor
0.99958395

Legend:

- Denotes control monument found
- Denotes iron post found
- m2 Denotes square metres



Reduced Scale Print



104th AVENUE

125th STREET



Cameron Land Surveying Ltd.
B.C. Land Surveyors
Unit 203-6333-148th St.
Surrey, B.C. V3S 3C3
Phone: 604-597-3777
Fax: 604-597-3783

Certified correct this 14th day of July, 2006.

Ken W. Schuurman
Ken W. Schuurman

B.C.L.S.

This plan lies within the Greater Vancouver Regional District

File: 4331-ZON