

CITY OF SURREY

BY-LAW NO. 16097

A by-law to amend "Surrey Zoning By-law, 1993, No. 12000,"
as amended.

.....

The Council of the City of Surrey, in open meeting assembled, ENACTS AS FOLLOWS:

1. Surrey Zoning By-law, 1993, No. 12000, as amended, is hereby further amended pursuant to the provisions of Section 903 of the *Local Government Act*, R.S.B.C. 1996, c.323, as amended, by changing the classification of the following parcels of land, presently shown upon the maps designated as the Zoning Maps and marked as Schedule "A" under Part 3 of Surrey Zoning By-law, 1993, No. 12000, as amended, as follows:

FROM: SINGLE FAMILY RESIDENTIAL ZONE (RF)

TO: SINGLE FAMILY RESIDENTIAL OCEANFRONT ZONE (RF-O)

Portion of Parcel Identifier: 009-315-977

Lot 18 Section 18 Township 1 New Westminster District Plan 24197,
shown on a Survey Plan attached hereto and forming part of this by-law as
Schedule A, certified correct by G.A. Rowbotham, B.C.L.S. on the 28th
day of June, 2006, called Block "A", containing 0.520 hectares and more
particularly described as follows:

(Portion of 2215 - 123 Street)

2. This By-law shall be cited for all purposes as "Surrey Zoning By-law, 1993, No. 12000, Amendment By-law, 2006, No. 16097."

PASSED FIRST AND SECOND READING on the 11th day of September, 2006.

PUBLIC HEARING HELD thereon on the 25th day of September, 2006.

PASSED THIRD READING on the 25th day of September, 2006.

RECONSIDERED AND FINALLY ADOPTED, signed by the Mayor and Clerk, and sealed with the Corporate Seal on the 30th day of April, 2007.

_____MAYOR

_____CLERK

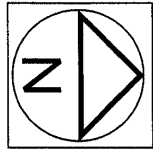
h:\by-laws\adopted bylaws\2007\16097.doc
M 6/17/10 10:37 AM

SCHEDULE A

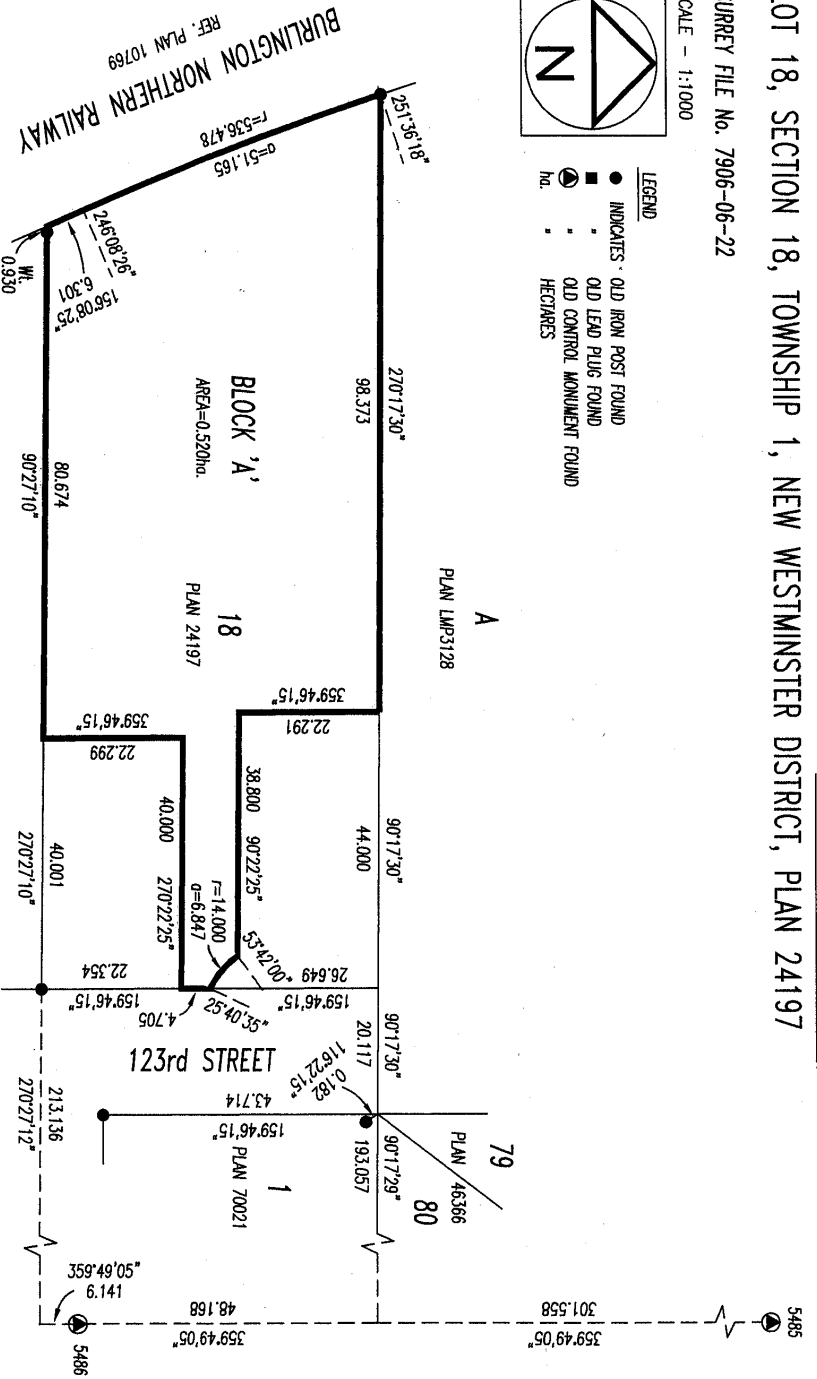
SURVEY PLAN TO ACCOMPANY CITY OF SURREY BYLAW No. 16097, OF A PORTION OF LOT 18, SECTION 18, TOWNSHIP 1, NEW WESTMINSTER DISTRICT, PLAN 24197

SURVEY FILE No. 7906-06-22

SCALE - 1:1000



- LEGEND
- INDICATES OLD IRON POST FOUND
 - OLD LEAD PILING FOUND
 - OLD CONTROL MONUMENT FOUND
 - HECTARES



OISEN & ASSOCIATES
B.C. LAND SURVEYORS
204-15565 24th AVE.
SURREY, B.C. V4A 2J4
Phone : 531-4067
Fax : 531-5811

GRD BEARINGS ARE DERIVED FROM OLD CONTROL MONUMENTS 5485 AND 5486
THIS PLAN SHOWS GROUND LEVEL MEASURED DISTANCES PRIOR TO COMPUTATION OF UTM COORDINATES MULTIPLY BY THE COMBINED FACTOR 0.9999974

CERTIFIED CORRECT
Dated this 28th day of JUNE, 2006
THIS DOCUMENT IS NOT VALID UNLESS ORIGINALLY SIGNED AND SEALED. ©

C. P. Rowbottom

Our File - 16832BYLAW