

CITY OF SURREY

BY-LAW NO. 16228

A by-law to amend "Surrey Zoning By-law, 1993, No. 12000,"  
as amended.

.....

The Council of the City of Surrey, in open meeting assembled, ENACTS AS FOLLOWS:

1. Surrey Zoning By-law, 1993, No. 12000, as amended, is hereby further amended pursuant to the provisions of Section 903 of the *Local Government Act*, R.S.B.C. 1996, c.323, as amended, by changing the classification of the following parcels of land, presently shown upon the maps designated as the Zoning Maps and marked as Schedule "A" under Part 3 of Surrey Zoning By-law, 1993, No. 12000, as amended, as follows:

FROM: ONE-ACRE RESIDENTIAL ZONE (RA)  
TO: SINGLE FAMILY RESIDENTIAL ZONE (RF)

Portion of Parcel Identifier: 002-190-621  
Lot 4 Section 32 Block 1 North Range 1 East New Westminster District  
Plan 6323, shown on a Survey Plan attached hereto and forming part of  
this by-law as Schedule A, certified correct by John Onderwater, B.C.L.S.  
on the 5th day of January, 2007, called Block "A", containing 1749.1  
square metres and more particularly described as follows:

(Portion of 17351 - 0 Avenue)

2. This By-law shall be cited for all purposes as "Surrey Zoning By-law, 1993, No. 12000, Amendment By-law, 2007, No. 16228."

PASSED FIRST AND SECOND READING on the 22nd day of January, 2007.

PUBLIC HEARING HELD thereon on the 12th day of February, 2007.

PASSED THIRD READING on the 12th day of February, 2007.

RECONSIDERED AND FINALLY ADOPTED, signed by the Mayor and Clerk, and sealed  
with the Corporate Seal on the 12th day of February, 2007.

\_\_\_\_\_MAYOR

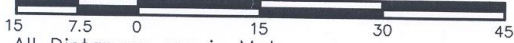
\_\_\_\_\_CLERK

h:\by-laws\adopted bylaws\2007\16228.doc  
M 6/17/10 11:46 AM

**SURVEY PLAN TO ACCOMPANY CITY OF SURREY  
 REZONING BYLAW 16228, OF A PART OF LOT 4  
 SECTION 32 BLOCK 1 NORTH RANGE 1 EAST  
 N.W.D PLAN 6323.**

**SCHEDULE A**

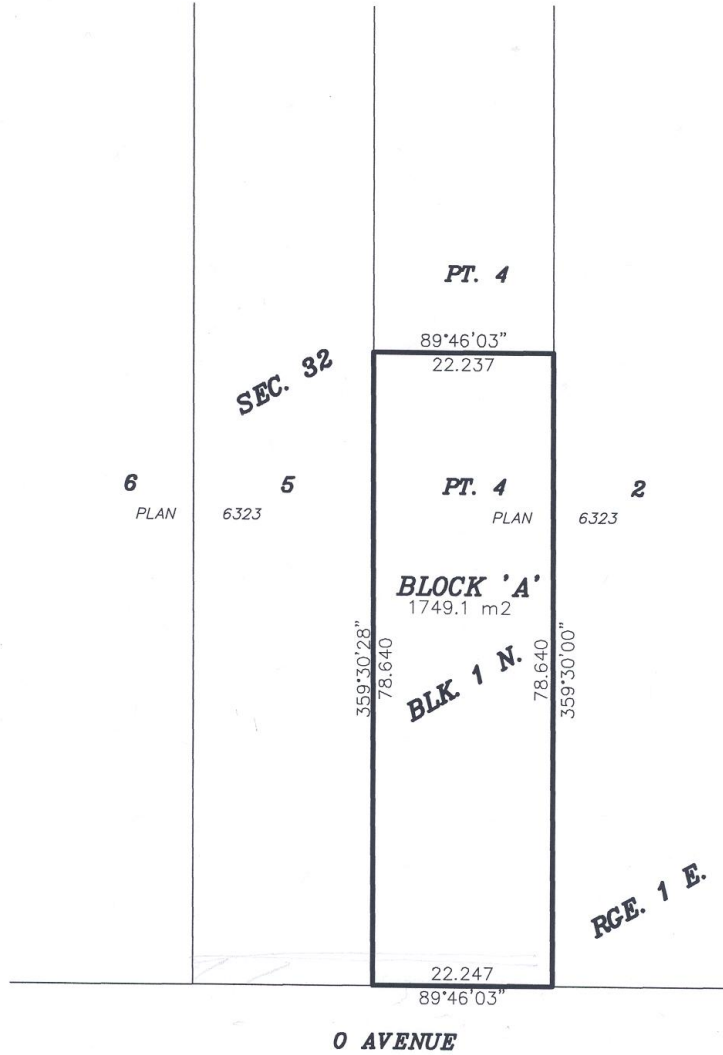
SCALE 1:750



All Distances are in Metres.

CITY OF SURREY

Grid Bearings are derived from  
 OCMS 86H1278 & 79H0034



Onderwater Land Surveying  
 B.C. Land Surveyors  
 #104-5830 176A Street  
 Cloverdale BC.

FILE: JS0484\_RZ4

© Certified correct, completed on  
 the 5th day of January, 2007.

*This Plan Lies Within The  
 Greater Vancouver Regional District*

*[Signature]*  
 B.C.L.S.