

CITY OF SURREY

BY-LAW NO. 16244

A by-law to amend "Surrey Zoning By-law, 1993, No. 12000,"
as amended.

.....

The Council of the City of Surrey, in open meeting assembled, ENACTS AS FOLLOWS:

1. Surrey Zoning By-law, 1993, No. 12000, as amended, is hereby further amended pursuant to the provisions of Section 903 of the *Local Government Act*, R.S.B.C. 1996, c.323, as amended, by changing the classification of the following parcels of land, presently shown upon the maps designated as the Zoning Maps and marked as Schedule "A" under Part 3 of Surrey Zoning By-law, 1993, No. 12000, as amended, as follows:

FROM: ONE-ACRE RESIDENTIAL ZONE (RA)

TO: SPECIAL SINGLE FAMILY RESIDENTIAL (9) ZONE (RF-9S)

Portion of Parcel Identifier: 005-779-359 Lot 2 Section 16 Township 8 New Westminster District Plan 73388, shown on a Survey Plan attached hereto and forming part of this by-law as Schedule A, certified correct by Paul Bartlett, B.C.L.S. on the 27th day of June, 2006, containing 1.195 hectares and more particularly described as follows:

0

(Portion of 19080 - 68 Avenue)

2. This By-law shall be cited for all purposes as "Surrey Zoning By-law, 1993, No. 12000, Amendment By-law, 2007, No. 16244."

PASSED FIRST AND SECOND READING on the 22nd day of January, 2007.

PUBLIC HEARING HELD thereon on the 12th day of February, 2007.

PASSED THIRD READING on the 12th day of February, 2007.

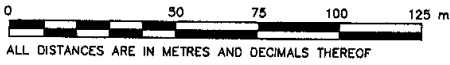
RECONSIDERED AND FINALLY ADOPTED, signed by the Mayor and Clerk, and sealed with the Corporate Seal on the 11th day of February, 2008.

_____ MAYOR

_____ CLERK

SCHEDULE A

SURVEY PLAN TO ACCOMPANY CITY OF SURREY BYLAW NUMBER 16244
 LOT 2,
 SECTION 16, TOWNSHIP 8,
 NEW WESTMINSTER DISTRICT,
 PLAN 73388. **THIS PLAN IS AT A
 REDUCED SCALE**
 B.C.G.S. 926.017
 SCALE 1 : 1250

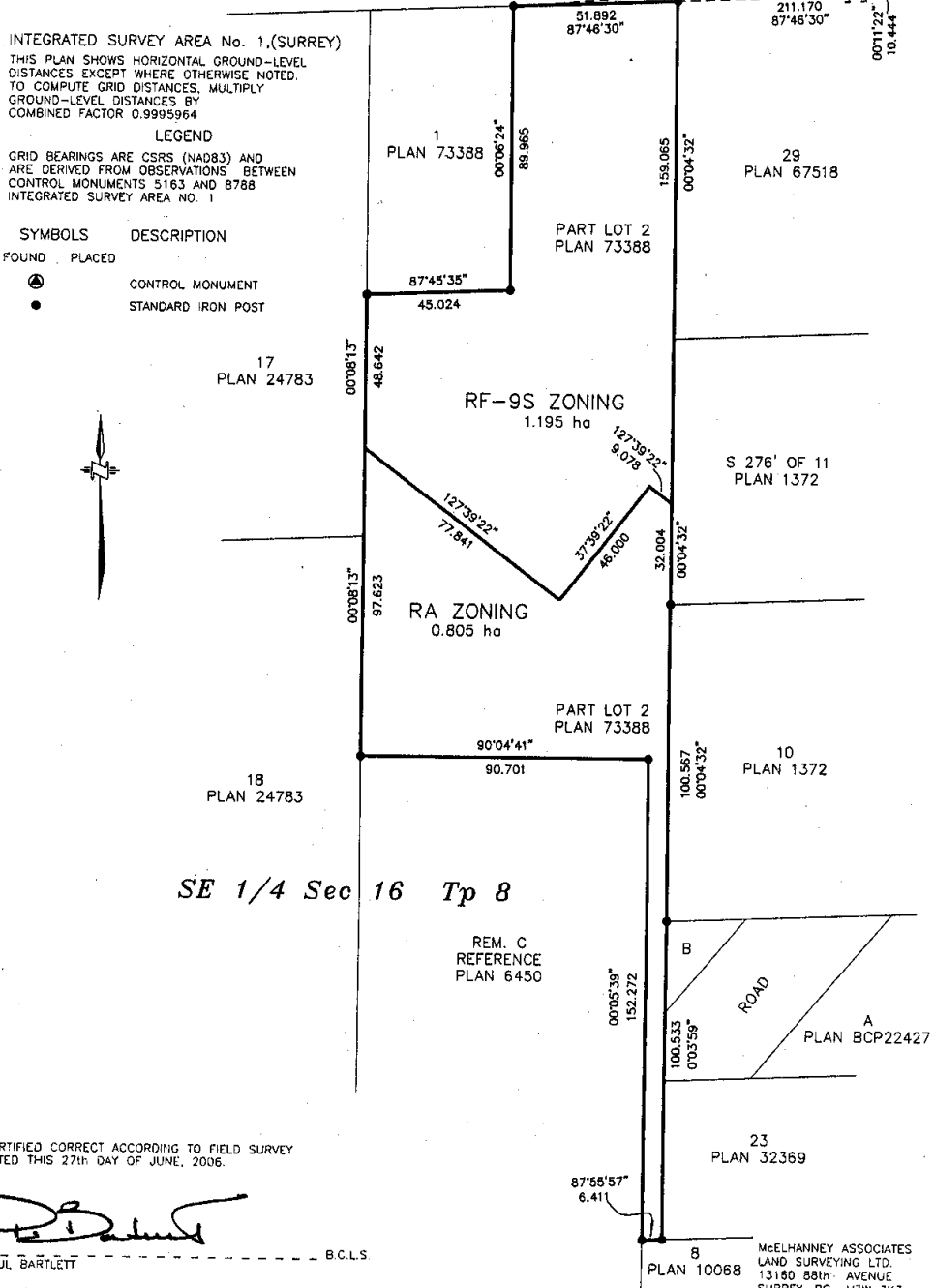


ALL DISTANCES ARE IN METRES AND DECIMALS THEREOF

INTEGRATED SURVEY AREA No. 1.(SURREY)
 THIS PLAN SHOWS HORIZONTAL GROUND-LEVEL DISTANCES EXCEPT WHERE OTHERWISE NOTED. TO COMPUTE GRID DISTANCES, MULTIPLY GROUND-LEVEL DISTANCES BY COMBINED FACTOR 0.9995964

LEGEND
 GRID BEARINGS ARE CSRS (NAD83) AND ARE DERIVED FROM OBSERVATIONS BETWEEN CONTROL MONUMENTS 5163 AND 8788
 INTEGRATED SURVEY AREA NO. 1

SYMBOLS	DESCRIPTION
FOUND PLACED	
●	CONTROL MONUMENT
●	STANDARD IRON POST



CERTIFIED CORRECT ACCORDING TO FIELD SURVEY
 DATED THIS 27th DAY OF JUNE, 2006.

Paul Bartlett
 PAUL BARTLETT

B.C.L.S.

THIS PLAN LIES WITHIN THE GREATER VANCOUVER REGIONAL DISTRICT - CITY OF SURREY

McELHANNAY ASSOCIATES
 LAND SURVEYING LTD.
 13150 88th AVENUE
 SURREY, BC V3W 3K3
 TEL: 604-596-0391
 FILE: 2112 62320-02.REV.1