

CITY OF SURREY

BY-LAW NO. 16248

A by-law to amend the provisions of "Surrey Official
Community Plan By-law, 1996, No. 12900," as amended.
.....

The Council of the City of Surrey, in open meeting assembled, ENACTS AS FOLLOWS:

1. That portion of the map designated as Schedule A. Land Use Designation Map, Division A of "Surrey Official Community Plan By-law, 1996, No. 12900," as amended as shown outlined black on the plan attached hereto and designated as "Amendment to Schedule A, Land Use Designation Map" is hereby amended as follows:

FROM: SUBURBAN (SUB)

TO: MULTIPLE RESIDENTIAL (RM)

Parcel Identifier: 008-270-457

East Half of the North Half Legal Subdivision 7 Section 23 Township 1 Except: Part subdivided by Plan 39503 New Westminster District

(15714 - 28 Avenue)

Parcel Identifier: 008-626-251

Lot 21 Section 23 Township 1 New Westminster District Plan 39503

(15760 - 28 Avenue)

Parcel Identifier: 008-626-243

Lot 20 Section 23 Township 1 New Westminster District Plan 39503

(15780 - 28 Avenue)

2. This By-law shall be cited for all purposes as "Surrey Official Community Plan By-law, 1996, No. 12900, No. 162 Amendment By-law, 2007, No. 16248."

PASSED FIRST AND SECOND READING on the 22nd day of January, 2007.

PUBLIC HEARING HELD thereon on the 12th day of February, 2007.

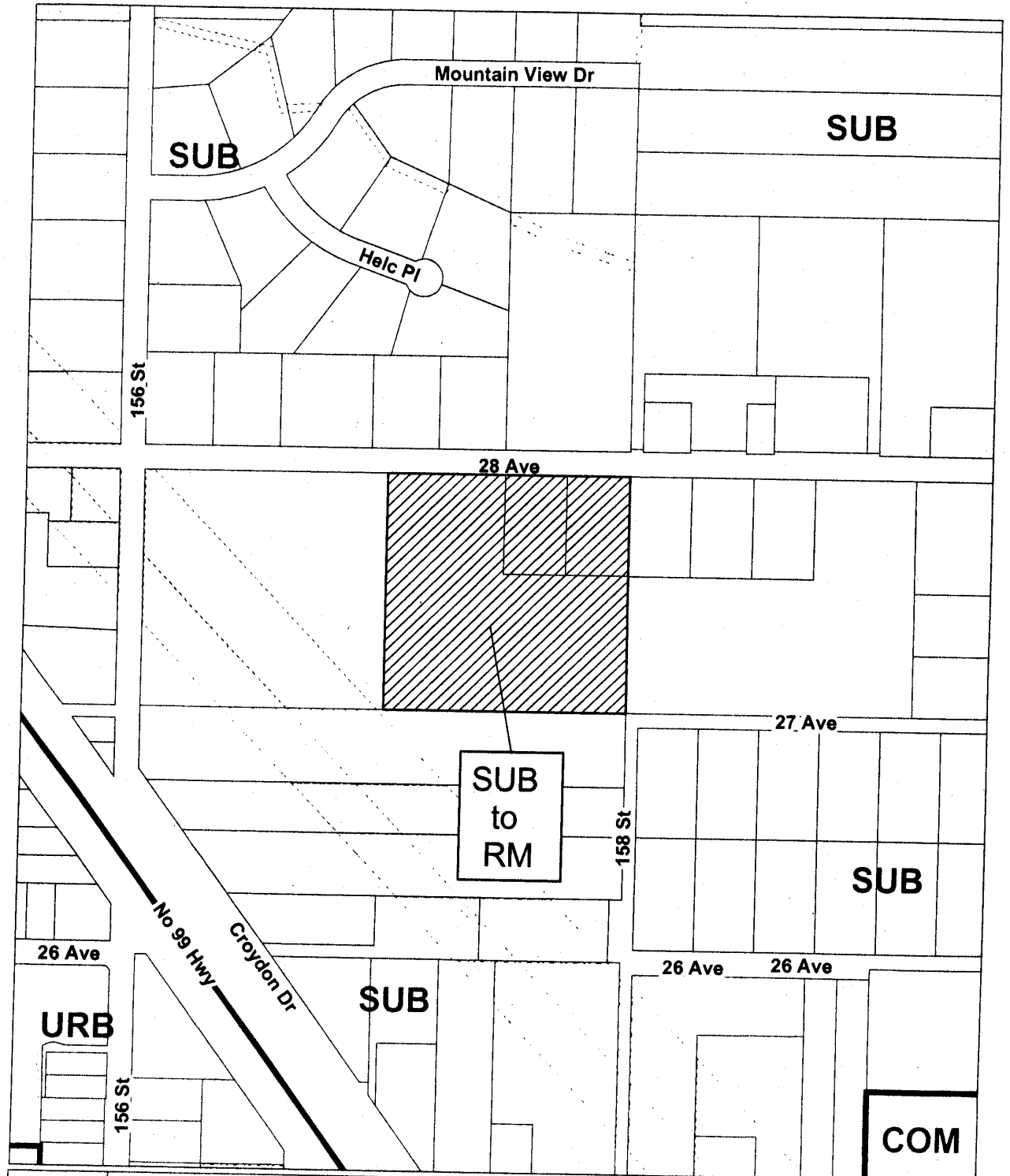
PASSED THIRD READING on the 12th day of February, 2007.

RECONSIDERED AND FINALLY ADOPTED, signed by the Mayor and Clerk, and sealed with the Corporate Seal on the 11th day of June, 2007.

_____ MAYOR

_____ CLERK

h:\by-laws\adopted bylaws\2007\16248.doc
M 6/17/10 1:23 PM



OCP Amendment

Proposed amendment from Suburban to Multiple Residential

