

CITY OF SURREY

BY-LAW NO. 16293

A by-law to amend "Surrey Zoning By-law, 1993, No. 12000,"
as amended.

.....

The Council of the City of Surrey, in open meeting assembled, ENACTS AS FOLLOWS:

1. Surrey Zoning By-law, 1993, No. 12000, as amended, is hereby further amended pursuant to the provisions of Section 903 of the *Local Government Act*, R.S.B.C. 1996, c.323, as amended, by changing the classification of the following parcels of land, presently shown upon the maps designated as the Zoning Maps and marked as Schedule "A" under Part 3 of Surrey Zoning By-law, 1993, No. 12000, as amended, as follows:

FROM: ONE-ACRE RESIDENTIAL ZONE (RA)

TO: SPECIAL SINGLE FAMILY RESIDENTIAL (9) ZONE (RF-9S)

Portion of Parcel Identifier: 011-082-984, Lot 2 Except: Part shown on Statutory Right of Way Plan 4500 Section 16 Township 8 New Westminster District Plan 4195, shown on a Survey Plan attached hereto and forming part of this by-law as Schedule A, certified correct by G.A. Hol, B.C.L.S. in June, 2006, called Block A, containing 5,127.4 square metres and more particularly described as follows:

(Portion of 18951 Fraser Highway)

2. This By-law shall be cited for all purposes as "Surrey Zoning By-law, 1993, No. 12000, Amendment By-law, 2007, No. 16293."

PASSED FIRST AND SECOND READING on the 26th day of February, 2007.

PUBLIC HEARING HELD thereon on the 12th day of March, 2007.

PASSED THIRD READING on the 12th day of March, 2007.

RECONSIDERED AND FINALLY ADOPTED, signed by the Mayor and Clerk, and sealed with the Corporate Seal on the 25th day of June, 2007.

_____ MAYOR

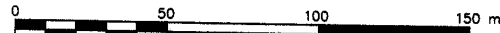
_____ CLERK

SCHEDULE A

BLOCK SURVEY PLAN TO ACCOMPANY CITY OF SURREY REZONING BYLAW NO. 16283 OF PART OF LOT 2 EXCEPT: PART SHOWN ON STATUTORY RIGHT OF WAY PLAN 4500; SECTION 16 TOWNSHIP 8 NEW PLAN 4195

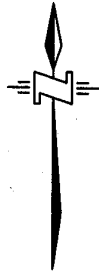
B.C.G.S. 92G.017

SCALE 1 : 1500



ALL DISTANCES ARE IN METRES AND DECIMALS THEREOF

Block A:
Area= 5,127.4 m2
From RA to RF-9S



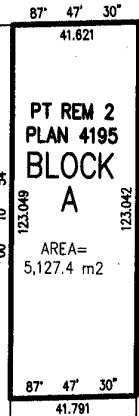
REM 5
PLAN 1372

REM 1
PLAN 4195

PT REM 2
PLAN 4195

A
EX PLAN 33101

REM 7
PLAN 1372



FRASER HIGHWAY

CERTIFIED CORRECT ACCORDING TO SURVEY
JUNE, 2006.

G.A. HOL  B.C.L.S.

McELHANNEY ASSOCIATES
LAND SURVEYING LTD.
13160 88th AVENUE
SURREY, BC V3W 3K3
TEL: 604-596-0391
FILE: 2112-62386-02 REV.1