

CITY OF SURREY

BY-LAW NO. 16405B

A by-law to amend "Surrey Zoning By-law, 1993, No. 12000,"
as amended.

.....

The Council of the City of Surrey, in open meeting assembled, ENACTS AS FOLLOWS:

1. Surrey Zoning By-law, 1993, No. 12000, as amended, is hereby further amended pursuant to the provisions of Section 903 of the *Local Government Act*, R.S.B.C. 1996, c.323, as amended, by changing the classification of the following parcels of land, presently shown upon the maps designated as the Zoning Maps and marked as Schedule "A" under Part 3 of Surrey Zoning By-law, 1993, No. 12000, as amended, as follows:

FROM: ONE-ACRE RESIDENTIAL ZONE (RA)
TO: SINGLE FAMILY RESIDENTIAL (12) ZONE (RF-12)

Portion of Parcel Identifier: 008-359-695 Lot 12 Section 32 Block 1 North Range 1 East New Westminster District Plan 37342, shown on a Survey Plan attached hereto and forming part of this by-law as Schedule A, certified correct by John Onderwater, B.C.L.S. on the 9th day of May, 2007, called Block 3 and containing 10,982.5 square metres and more particularly described as follows:

(Portion of 17414 - 4 Avenue)

2. This By-law shall be cited for all purposes as "Surrey Zoning By-law, 1993, No. 12000, Amendment By-law, 2007, No. 16405B."

PASSED FIRST AND SECOND READING on the 28th day of May, 2007.

PUBLIC HEARING HELD thereon on the 11th day of June, 2007.

PASSED THIRD READING on the 11th day of June, 2007.

RECONSIDERED AND FINALLY ADOPTED, signed by the Mayor and Clerk, and sealed with the Corporate Seal on the 9th day of March, 2009.

_____MAYOR

_____CLERK

h:\by-laws\adopted bylaws\2009\byl 16405b.doc

SCHEDULE A

**SURVEY PLAN TO ACCOMPANY CITY OF SURREY
REZONING BYLAW 16405B OF LOT 12 SECTION 32
BLOCK 1 NORTH RANGE 1 EAST N.W.D PLAN 37342**

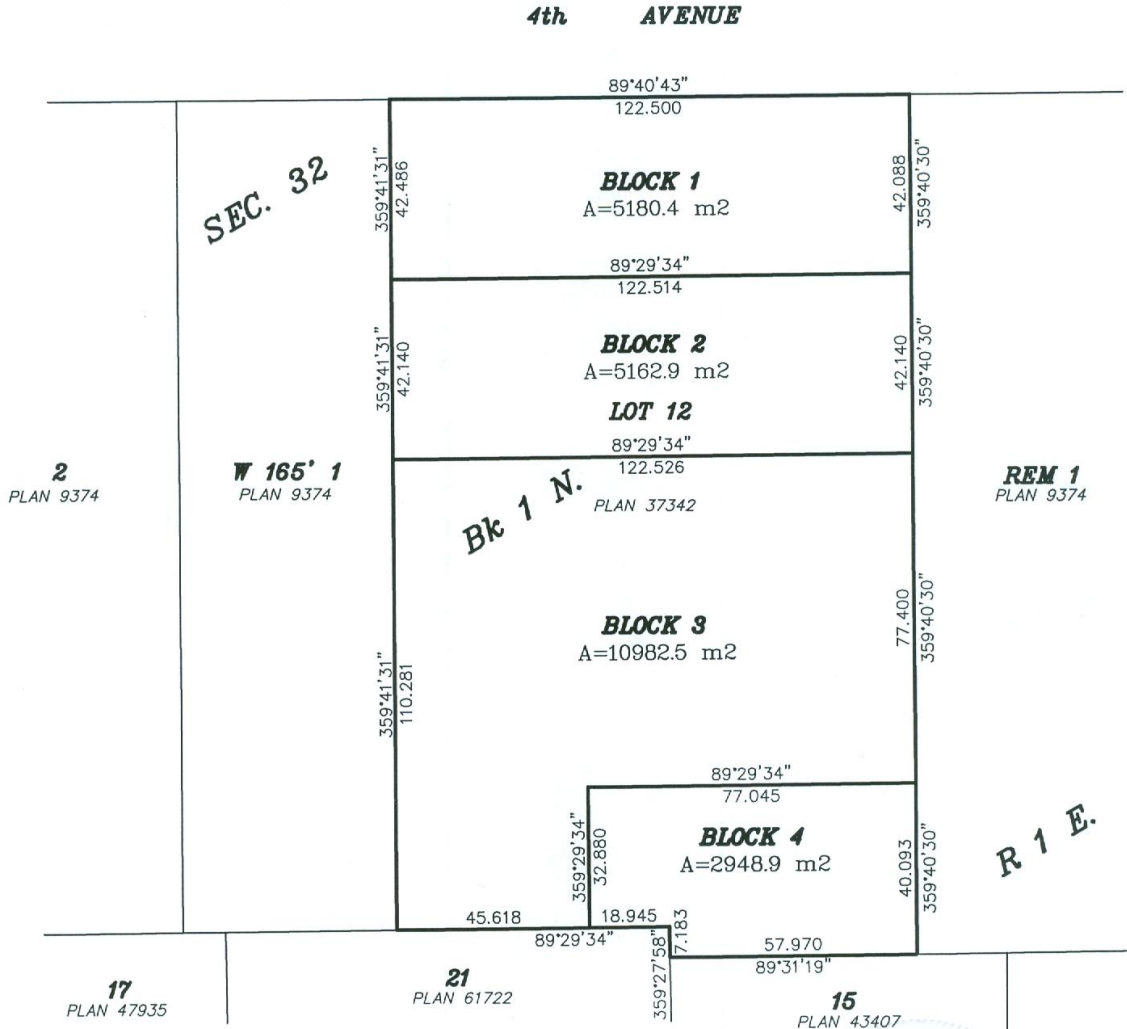
SCALE 1:1500



All Distances are in Metres.

CITY OF SURREY

Grid Bearings are derived from
OCMS 84H0576 & 86H1285.



Onderwater Land Surveying
B.C. Land Surveyors
#104-5830 176A Street
Cloverdale B.C.

FILE: JS0712_RZ

© Certified correct, completed on
the 9th day of May, 2007.

*This Plan Lies Within The
Greater Vancouver Regional District*

[Signature]

B.C.L.S.