

CITY OF SURREY

BY-LAW NO. 16411

A by-law to amend "Surrey Zoning By-law, 1993, No. 12000,"
as amended.

.....

The Council of the City of Surrey, in open meeting assembled, ENACTS AS FOLLOWS:

1. Surrey Zoning By-law, 1993, No. 12000, as amended, is hereby further amended pursuant to the provisions of Section 903 of the *Local Government Act*, R.S.B.C. 1996, c.323, as amended, by changing the classification of the following parcels of land, presently shown upon the maps designated as the Zoning Maps and marked as Schedule "A" under Part 3 of Surrey Zoning By-law, 1993, No. 12000, as amended, as follows:

FROM: LOCAL COMMERCIAL ZONE (C-4)
TO: NEIGHBOURHOOD COMMERCIAL ZONE (C-5)

Parcel Identifier: 004-938-178 Lot 233 Section 32 Township 2
New Westminster District Plan 51486

(9059 King George Highway)

FROM: COMBINED SERVICE GASOLINE STATION ZONE (CG-2)
TO: NEIGHBOURHOOD COMMERCIAL ZONE (C-5)

Parcel Identifier: 000-948-829 Lot 5 Section 32 Township 2
New Westminster District Plan 19543

(9085 King George Highway)

FROM: LOCAL COMMERCIAL ZONE (C-4)
AND: COMBINED SERVICE GASOLINE STATION ZONE (CG-2)
TO: NEIGHBOURHOOD COMMERCIAL ZONE (C-5)

Portion of road lying in Section 32 Township 2 New Westminster District, dedicated on Plan 19543 and Plan 51486, shown on a Survey Plan attached hereto and forming part of this by-law as Schedule A, certified correct by Gene Paul Nikula, B.C.L.S. on the 7th day of June, 2007, containing 455.3 square metres, called Block "A" and more particularly described as follows:

(Portion of Lane)

2. This By-law shall be cited for all purposes as "Surrey Zoning By-law, 1993, No. 12000, Amendment By-law, 2007, No. 16411."

PASSED FIRST AND SECOND READING on the 11th day of June, 2007.

PUBLIC HEARING HELD thereon on the 25th day of June, 2007.

PASSED THIRD READING on the 25th day of June, 2007.

RECONSIDERED AND FINALLY ADOPTED, signed by the Mayor and Clerk, and sealed with the Corporate Seal on the 14th day of December, 2009.

_____MAYOR

_____CLERK

SCHEDULE A

**SURVEY PLAN TO ACCOMPANY CITY OF SURREY BYLAW NO. 16411
OF A PORTION OF ROAD DEDICATED ON PLAN 18543 AND PLAN 51486
OF SECTION 32 TOWNSHIP 2 NEW WESTMINSTER DISTRICT**

FOR THE PURPOSE OF REZONING

CITY OF SURREY
LEGEND

SCALE 1:500

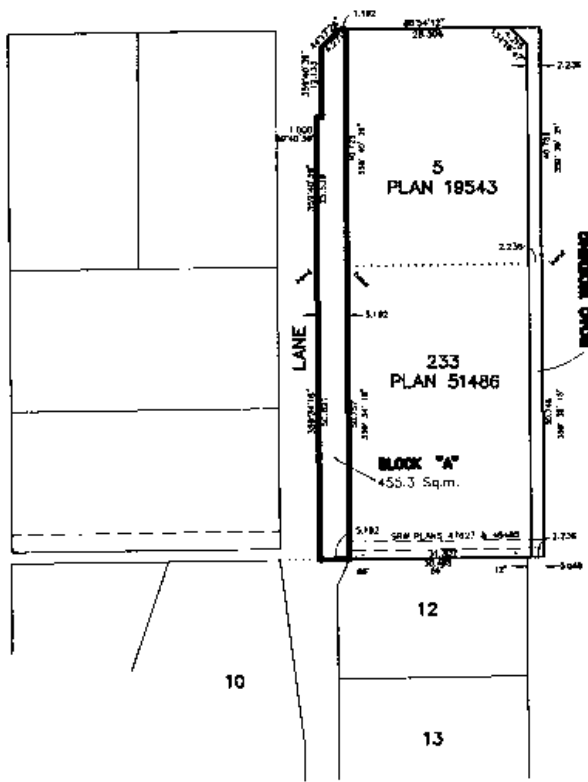


(All distances are in metres)

Note

All dimensions are in metres.

91 AVENUE



KING GEORGE HWY

**DHAJIRAL & ASSOCIATES
LAND SURVEYING INC.**
121 12140 90th Avenue
Surrey, B.C.
V3W 5G2
(604) 504-2011-2186
(F) 604 501-6189
FAX : 6048089-201.016

