

CITY OF SURREY

BY-LAW NO. 16631

A by-law to amend "Surrey Zoning By-law, 1993, No. 12000,"
as amended.

.....

The Council of the City of Surrey, in open meeting assembled, ENACTS AS FOLLOWS:

1. Surrey Zoning By-law, 1993, No. 12000, as amended, is hereby further amended pursuant to the provisions of Section 903 of the *Local Government Act*, R.S.B.C. 1996, c.323, as amended, by changing the classification of the following parcels of land, presently shown upon the maps designated as the Zoning Maps and marked as Schedule "A" under Part 3 of Surrey Zoning By-law, 1993, No. 12000, as amended, as follows:

FROM: ONE-ACRE RESIDENTIAL ZONE (RA)
TO: SINGLE FAMILY RESIDENTIAL ZONE (RF)

Portion of Parcel Identifier: 008-580-332
Parcel "A" (Explanatory Plan 12728) Lot 27 Except: Part Dedicated Road on Plan BCP12671 Section 7 Township 2 New Westminster District Plan 2378, shown on a Survey Plan attached hereto and forming part of this by-law as Schedule A, certified correct by Kenneth W. Schuurman, B.C.L.S. on the 13th day of March, 2008, called Block A, containing 0.268 hectares and more particularly described as follows:

Portion of 6045 - 128 Street

FROM: ONE-ACRE RESIDENTIAL ZONE (RA)
SINGLE FAMILY RESIDENTIAL (12) ZONE (RF-12)

Portion of Parcel Identifier: 008-580-332
Parcel "A" (Explanatory Plan 12728) Lot 27 Except: Part Dedicated Road on Plan BCP12671 Section 7 Township 2 New Westminster District Plan 2378, shown on a Survey Plan attached hereto and forming part of this by-law as Schedule A, certified correct by Kenneth W. Schuurman, B.C.L.S. on the 13th day of March, 2008, called Block B, containing 0.203 hectares and more particularly described as follows:

Portion of 6045 - 128 Street

2. This By-law shall be cited for all purposes as "Surrey Zoning By-law, 1993, No. 12000, Amendment By-law, 2008, No. 16631."

PASSED FIRST AND SECOND READING on the 14th day of April, 2008.

PUBLIC HEARING HELD thereon on the 28th day of April, 2008.

PASSED THIRD READING on the 28th day of April, 2008.

RECONSIDERED AND FINALLY ADOPTED, signed by the Mayor and Clerk, and sealed with the Corporate Seal on the 9th day of March, 2009.

_____MAYOR

_____CLERK

h:\by-laws\adopted bylaws\2009\byl 16631.doc

**SURVEY PLAN TO ACCOMPANY CITY OF SURREY ZONING BYLAW NO. 16631
OF PARCEL A (EXPLANATORY PLAN 12728) LOT 27, EXCEPT PART DEDICATED
ROAD ON PLAN BCP 12671, SECTION 7, TOWNSHIP 2, N.W.D., PLAN 2378**

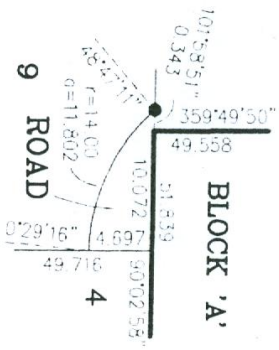
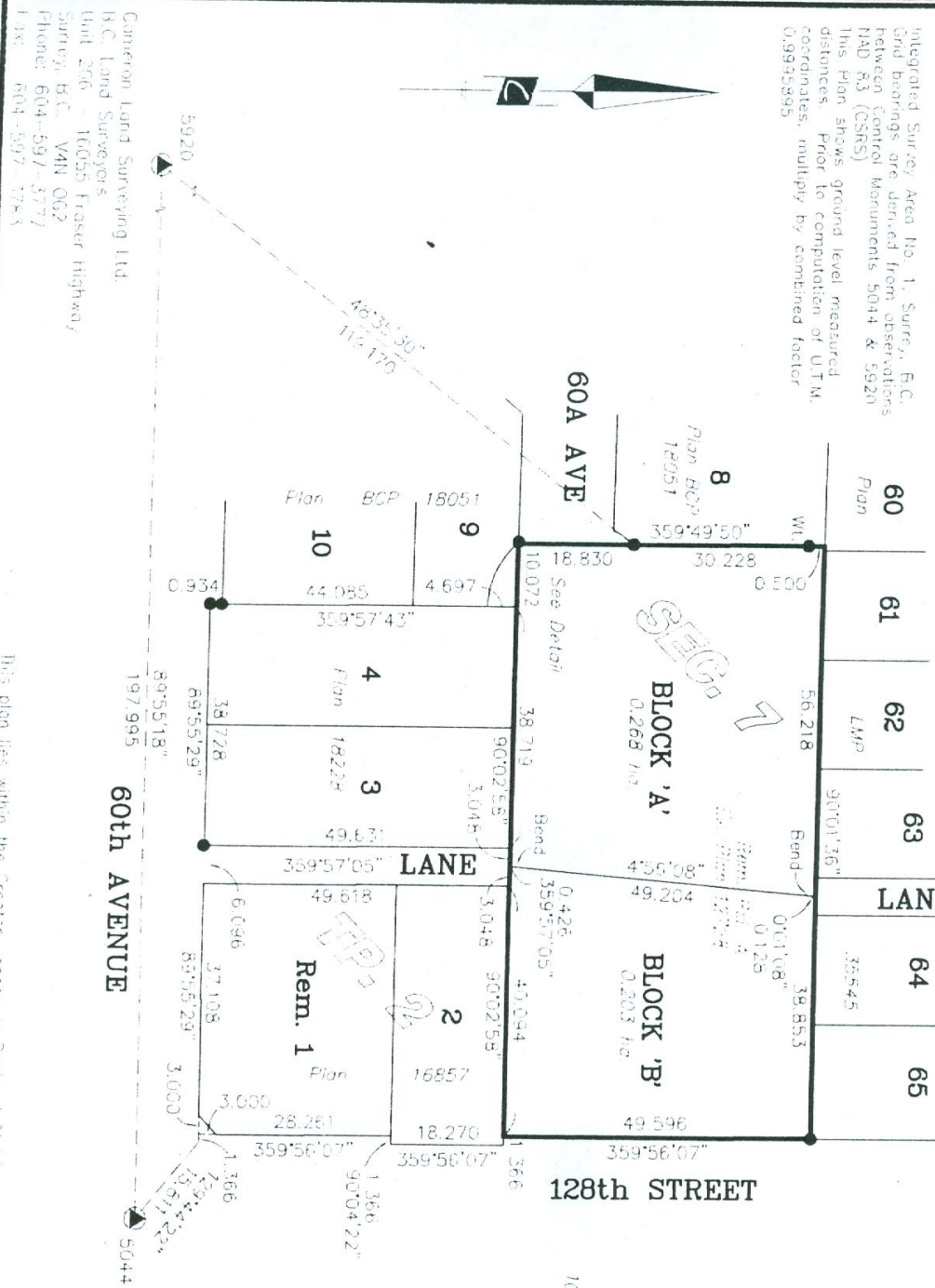
City of Surrey BCGS 926.016

61st AVENUE

SCALE 1 : 1000

All distances are in metres

Integrated Survey Area No. 1, Surrey, B.C. Grid bearings are derived from observations between Control Monuments 5044 & 5920 NAD 83 (CSRS). This Plan shows ground level measured distances. Prior to computation of UTM coordinates, multiply by combined factor 0.9935945



Legend:
 ▲ Denotes control monument found
 ● Denotes iron post found
 na. Denotes hectares

SCHEDULE A

Cameron Land Surveying Ltd.
 B.C. Land Surveyors
 Unit 206 - 16055 Fraser Highway
 Surrey, B.C. V4N 0G2
 Phone: 604-597-3777
 Fax: 604-597-1783

This plan lies within the Greater Vancouver Regional District

Certified correct this 13th day
 of March, 2009.

K. S. [Signature]
 B.C.L.S.
 File: 4415-ZONING