

CITY OF SURREY

BY-LAW NO. 16757

A by-law to amend "Surrey Zoning By-law, 1993, No. 12000,"
as amended.

.....

The Council of the City of Surrey, in open meeting assembled, ENACTS AS FOLLOWS:

1. Surrey Zoning By-law, 1993, No. 12000, as amended, is hereby further amended pursuant to the provisions of Section 903 of the *Local Government Act*, R.S.B.C. 1996, c.323, as amended, by changing the classification of the following parcels of land, presently shown upon the maps designated as the Zoning Maps and marked as Schedule "A" under Part 3 of Surrey Zoning By-law, 1993, No. 12000, as amended, as follows:

FROM: ONE-ACRE RESIDENTIAL ZONE (RA)

TO: SINGLE FAMILY RESIDENTIAL (g) COACH HOUSE ZONE (RF-gC)

Portion of Parcel Identifier: 000-639-257, Lot 15 Section 22 Township 8 New Westminster District Plan 2600, shown on a Survey Plan attached hereto and forming part of this by-law as Schedule A, certified correct by Ken W. Schuurman, B.C.L.S. on the 7th day of January, 2008, called Block A, containing 0.530 hectares and more particularly described as follows:

Portion of 7354 - 194 Street

2. This By-law shall be cited for all purposes as "Surrey Zoning By-law, 1993, No. 12000, Amendment By-law, 2008, No. 16757."

PASSED FIRST AND SECOND READING on the 8th day of September, 2008.

PUBLIC HEARING HELD thereon on the 29th day of September, 2008.

PASSED THIRD READING on the 29th day of September, 2008.

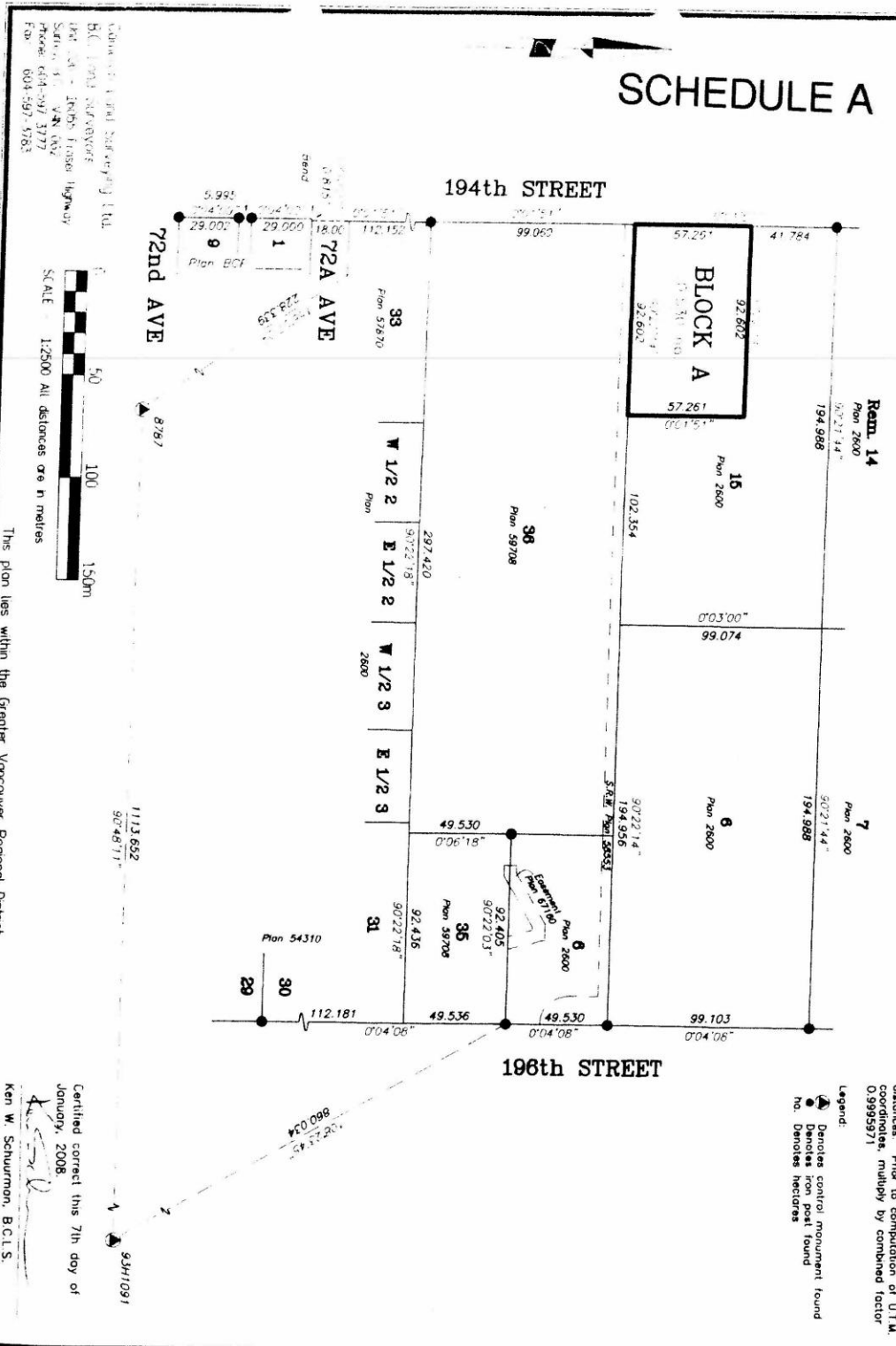
RECONSIDERED AND FINALLY ADOPTED, signed by the Mayor and Clerk, and sealed with the Corporate Seal on the 28th day of November, 2011.

_____MAYOR

_____CLERK

BYLAW NO. 16151 OF LOT 15, SECTION 22, TOWNSHIP 8, N.W.D., PLAN 2600
 City of Surrey B.C.G.S. 92G.017

SCHEDULE A

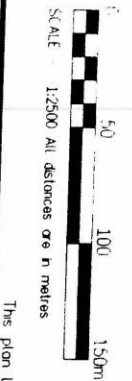


Legend:
 ▲ Denotes control monument found
 ● Denotes from post found
 ◉ Denotes hectares

Integrated Survey Area No. 1, Surrey, B.C. Grid bearings derived from observations between Control Monument 8787 & 93H1091 MAD 83 (CSRS). This Plan shows ground level measured distances. Prior to compilation of UTM coordinates, multiply by combined factor 0.9995971.

Certified correct this 7th day of January, 2008
 Ken W. Schuurman, B.C.L.S.
 File: 4521-ZONING

Advertisement: Rural Surveying Ltd.
 B.C. 1993 ADVISORY
 The City of Surrey
 Phone: 604-597-3777
 Fax: 604-597-3783



This plan lies within the Greater Vancouver Regional District