

CITY OF SURREY

BY-LAW NO. 17103

A by-law to amend "Surrey Zoning By-law, 1993, No. 12000,"
as amended.

.....

The Council of the City of Surrey, in open meeting assembled, ENACTS AS FOLLOWS:

1. Surrey Zoning By-law, 1993, No. 12000, as amended, is hereby further amended pursuant to the provisions of Section 903 of the *Local Government Act*, R.S.B.C. 1996, c.323, as amended, by changing the classification of the following parcels of land, presently shown upon the maps designated as the Zoning Maps and marked as Schedule "A" under Part 3 of Surrey Zoning By-law, 1993, No. 12000, as amended, as follows:

FROM: ONE-ACRE RESIDENTIAL ZONE (RA)
TO: MULTIPLE RESIDENTIAL 30 ZONE (RM-30)

Portion of Parcel Identifier: 010-765-905
Lot 7 Except: Part Red on Statutory Right of Way Plan 6363
Block 1 Section 9 Township 2 New westminster District Plan 2840
as shown on the Survey Plan attached hereto and forming part of this By-law
as Schedule A, certified correct by Gene Paul Nikula B.C.L.S. on the 10th day of
December 2009, containing 12105 square metres and called Block A

(Portion of 6109 – 138 Street)

Parcel Identifier: 008-360-570
Lot 20 Except: Part Dedicated Road on Plan BCP23188
Section 9 Township 2 New Westminster District Plan 37281

(6059 – 138 Street)

Parcel Identifier: 008-360-588
Lot 21 Section 9 Township 2 New Westminster District Plan 37281

(6089 – 138 Street)

2. This By-law shall be cited for all purposes as "Surrey Zoning By-law, 1993, No. 12000, Amendment By-law, 2009, No. 17103."

PASSED FIRST AND SECOND READING on the 14th day of December, 2009.

PUBLIC HEARING HELD thereon on the 11th day of January, 2010.

PASSED THIRD READING on the 11th day of January, 2010.

RECONSIDERED AND FINALLY ADOPTED, signed by the Mayor and Clerk, and sealed with the Corporate Seal on the 28th day of November, 2011.

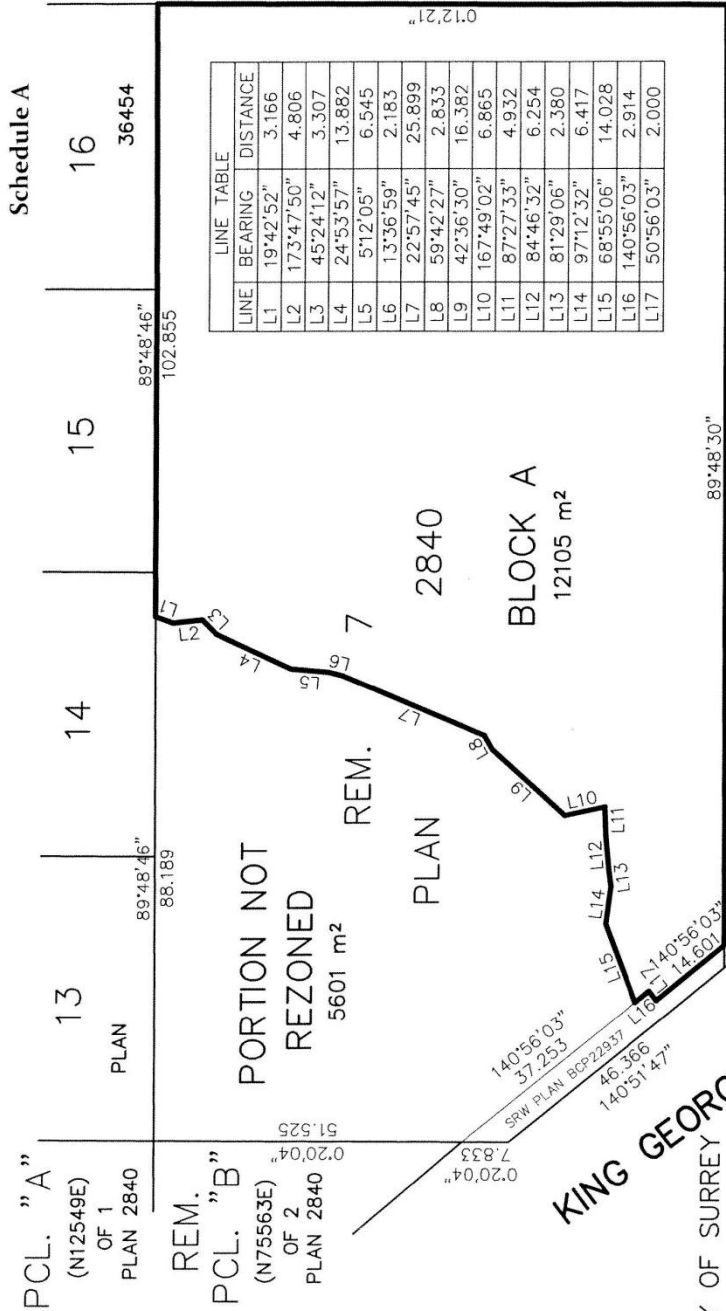
_____MAYOR

_____CLERK

h:\by-laws\adopted bylaws\2011\byl 17103.docx

SCHEDULE A

**BLOCK PLAN TO ACCOMPANY CITY OF SURREY ZONING BYLAW NO. 17103
OVER LOT 7 EXCEPT: PART RED ON S.R.W. PLAN 6363 BLK. 1 SECTION 9
TOWNSHIP 2 NEW WESTMINSTER DISTRICT PLAN 2840**



LINE	BEARING	DISTANCE
L1	19°42'52"	3.166
L2	173°47'50"	4.806
L3	45°24'12"	3.307
L4	24°53'57"	13.882
L5	51°2'05"	6.545
L6	13°36'59"	2.183
L7	22°57'45"	25.899
L8	59°42'27"	2.833
L9	42°36'30"	16.382
L10	167°49'02"	6.865
L11	87°27'33"	4.932
L12	84°46'32"	6.254
L13	81°29'06"	2.380
L14	97°12'32"	6.417
L15	68°55'06"	14.028
L16	140°56'03"	2.914
L17	50°56'03"	2.000

Certified correct according to LTO records
this 10th day of December, 2009

Gene Paik
GENE PAIK, R.I.K.U.L.A. (C) 88 B.C.L.S. 803

**THIS DOCUMENT IS NOT VALID UNLESS
ORIGINALLY SIGNED AND SEALED**

REM. 21
PLAN 37281

CITY OF SURREY
SCALE 1:1000

© COPYRIGHT
DHALIWAL AND ASSOCIATES
LAND SURVEYING INC.
121-13140 80th Avenue
Surrey, B.C. V3W 3E2
Phone: 604 501-6188
Fax: 604 501-6189
File: 0609006-Z01.DWG

Schedule A