

CITY OF SURREY

BY-LAW NO. 16441

A by-law to amend "Surrey Zoning By-law, 1993, No. 12000,"
as amended.

.....

The Council of the City of Surrey, in open meeting assembled, ENACTS AS FOLLOWS:

1. Surrey Zoning By-law, 1993, No. 12000, as amended, is hereby further amended pursuant to the provisions of Section 903 of the *Local Government Act*, R.S.B.C. 1996, c.323, as amended, by changing the classification of the following parcels of land, presently shown upon the maps designated as the Zoning Maps and marked as Schedule "A" under Part 3 of Surrey Zoning By-law, 1993, No. 12000, as amended, as follows:

FROM: ONE-ACRE RESIDENTIAL ZONE (RA)
TO: SINGLE FAMILY RESIDENTIAL (12) ZONE (RF-12)

Parcel Identifier: 006-534-414 Lot 30 Section 27 Township 2 New Westminster District Plan 42730, shown on a Survey Plan attached hereto and forming part of this by-law as Schedule A, certified correct by G. Rankine, B.C.L.S. on the 7th day of July, 2007, forming part of Block A and containing 14,415.1 square metres,

(8119 - 146 Street)

FROM: SURREY ZONING BY-LAW, 1993, NO. 12000, AMENDMENT
BY-LAW, 2001, NO. 14425
TO: SINGLE FAMILY RESIDENTIAL (12) ZONE (RF-12)

Portion of Parcel Identifier: 025-410-032 Lot 25 Section 27 Township 2 New Westminster District Plan LMP53759, shown on a Survey Plan attached hereto as Schedule A, certified correct by G. Rankine, B.C.L.S. on the 7th day of July, 2007, forming part of Block A and containing 234.9 square metres and more particularly described as follows:

(Portion of 14522 - 81 Avenue)

2. This By-law shall be cited for all purposes as "Surrey Zoning By-law, 1993, No. 12000, Amendment By-law, 2007, No. 16441."

PASSED FIRST AND SECOND READING on the 23rd day of July, 2007.

PUBLIC HEARING HELD thereon on the 10th day of September, 2007.

PASSED THIRD READING on the 17th day of September, 2009.

RECONSIDERED AND FINALLY ADOPTED, signed by the Mayor and Clerk, and sealed with the Corporate Seal on the 15th day of June, 2009.

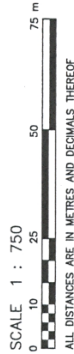
_____MAYOR

_____CLERK

SCHEDULE A

**BLOCK SURVEY PLAN TO ACCOMPANY CITY OF SURREY REZONING BYLAW NO. 1644
OF LOT 30 PLAN 42730, AND LOT 25 PLAN LMP53759,
BOTH OF SECTION 27, TOWNSHIP 2, NEW WESTMINSTER DISTRICT**

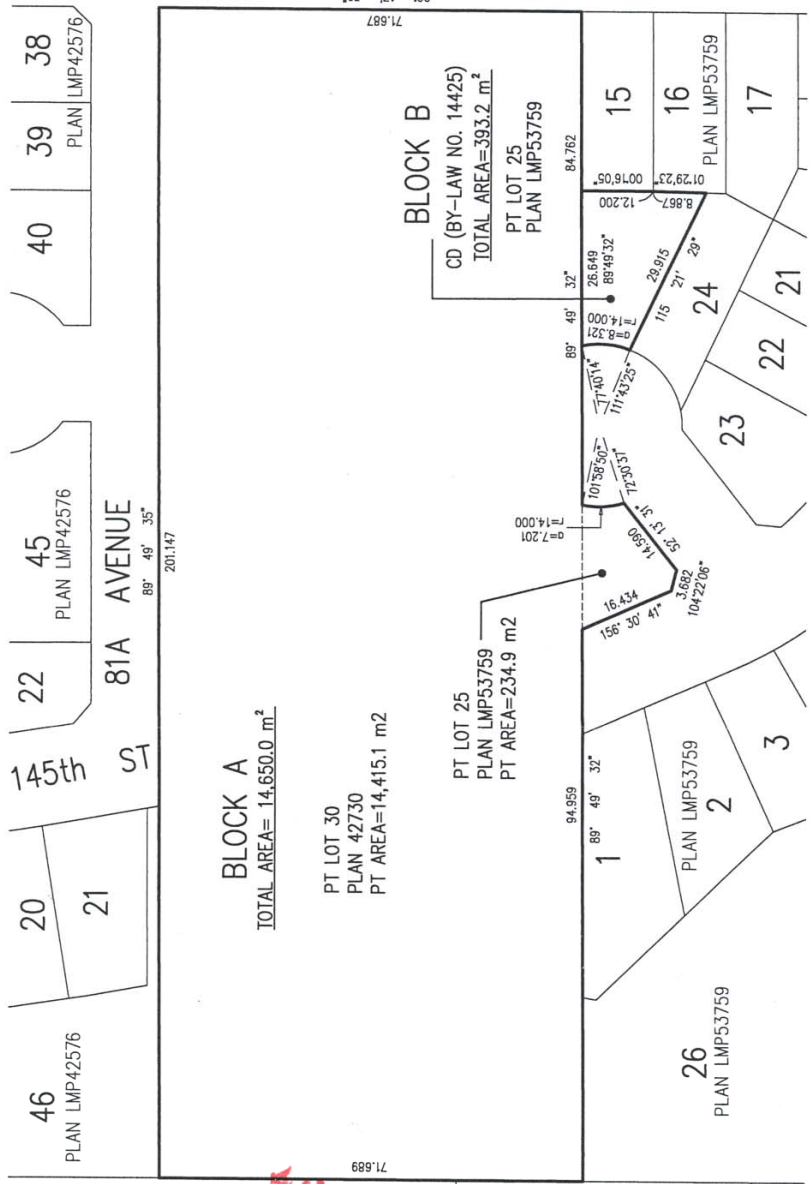
B.C.G.S. 92G.016



BLOCK A FROM RA/CD TO RF12
AREA = 14,650.1 m ²
BLOCK B CD ZONING
AREA = 392.0 m ²

PARK
PLAN LMP6646

**THIS PLAN IS AT A
REDUCED SCALE**



McELHANNAY ASSOCIATES
LAND SURVEYING LTD.
13160 88th AVENUE
SURREY, BC V3W 3K3
TEL: 604-586-0391
FILE: 2112-62328-02

CERTIFIED CORRECT ACCORDING TO SURVEY
THIS 2th DAY OF JULY, 2007

G. Rankine
G. RANKINE B.C.L.S.