

CITY OF SURREY

BY-LAW NO. 16572

A by-law to amend "Surrey Zoning By-law, 1993, No. 12000,"  
as amended.

.....

The Council of the City of Surrey, in open meeting assembled, ENACTS AS FOLLOWS:

1. Surrey Zoning By-law, 1993, No. 12000, as amended, is hereby further amended pursuant to the provisions of Section 903 of the *Local Government Act*, R.S.B.C. 1996, c.323, as amended, by changing the classification of the following parcels of land, presently shown upon the maps designated as the Zoning Maps and marked as Schedule "A" under Part 3 of Surrey Zoning By-law, 1993, No. 12000, as amended, as follows:

FROM: HIGHWAY COMMERCIAL INDUSTRIAL ZONE (CHI)  
TO: SINGLE FAMILY RESIDENTIAL ZONE (RF)

Portions of land shown on a Survey Plan attached hereto and forming part of this by-law as Schedule A, certified correct by Ken W. Schuurman, B.C.L.S. on the 4th day of January, 2008, containing 0.502 hectares, called Block B and more particularly described as follows:

Portion of Parcel Identifier: 005-767-351  
Lot 6 Section 14 Township 1 New Westminster District Plan 8443

(2315 King George Highway)

Portion of Parcel Identifier: 008-166-005  
Lot 7 Section 14 Township 1 New Westminster District Plan 8443

(2301 King George Highway)

Portion of Parcel Identifier: 011-306-858  
Lot 8 Section 14 Township 1 New Westminster District Plan 8443

(2297 King George Highway)

2. This By-law shall be cited for all purposes as "Surrey Zoning By-law, 1993, No. 12000, Amendment By-law, 2008, No. 16572."

PASSED FIRST AND SECOND READING on the 28th day of January, 2008.

PUBLIC HEARING HELD thereon on the 11th day of February, 2008.

PASSED THIRD READING on the 11th day of February, 2008.

RECONSIDERED AND FINALLY ADOPTED, signed by the Mayor and Clerk, and sealed with the Corporate Seal on the 17th day of May, 2010.

\_\_\_\_\_MAYOR

\_\_\_\_\_CLERK

**SURVEY PLAN TO ACCOMPANY CITY OF SURREY REZONING  
BYLAW NO. 16572 OF LOTS 6, 7 AND 8, SECTION 14,  
TOWNSHIP 1, N.W.D., PLAN 8443**

City of Surrey BCGS 92G.007

API SCHEDULE A VII



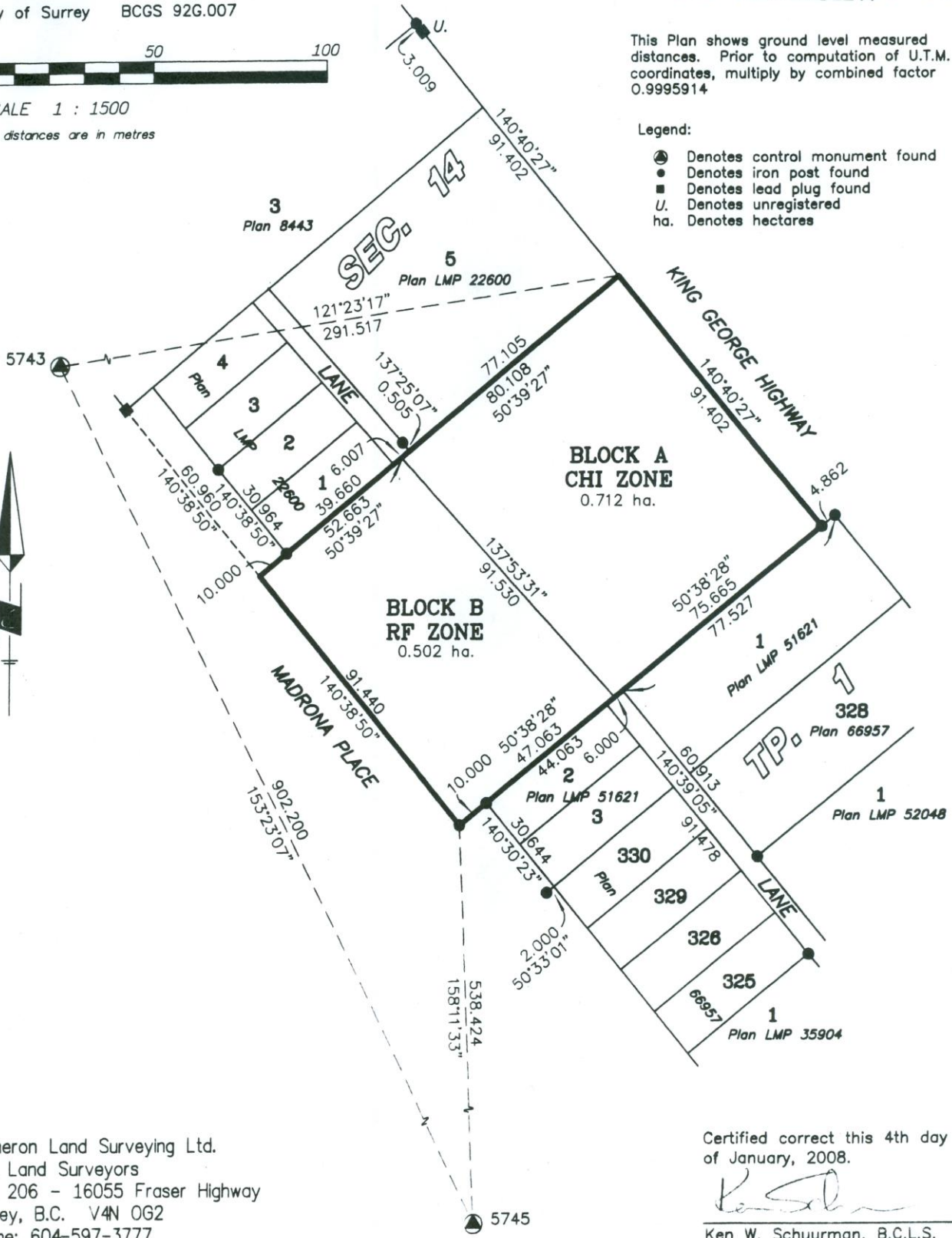
SCALE 1 : 1500

All distances are in metres

This Plan shows ground level measured distances. Prior to computation of U.T.M. coordinates, multiply by combined factor 0.9995914

**Legend:**

- Denotes control monument found
- Denotes iron post found
- Denotes lead plug found
- U. Denotes unregistered
- ha. Denotes hectares



Cameron Land Surveying Ltd.  
B.C. Land Surveyors  
Unit 206 - 16055 Fraser Highway  
Surrey, B.C. V4N 0G2  
Phone: 604-597-3777  
Fax: 604-597-3783

Certified correct this 4th day  
of January, 2008.

*Ken W. Schuurman*  
Ken W. Schuurman, B.C.L.S.

This plan lies within the Greater Vancouver Regional District

File: 4429-ZONING