

CITY OF SURREY

BY-LAW NO. 16676B

A by-law to amend "Surrey Zoning By-law, 1993, No. 12000,"
as amended.
.....

The Council of the City of Surrey, in open meeting assembled, ENACTS AS FOLLOWS:

1. Surrey Zoning By-law, 1993, No. 12000, as amended, is hereby further amended pursuant to the provisions of Section 903 of the *Local Government Act*, R.S.B.C. 1996, c.323, as amended, by changing the classification of the following parcels of land, presently shown upon the maps designated as the Zoning Maps and marked as Schedule "A" under Part 3 of Surrey Zoning By-law, 1993, No. 12000, as amended, as follows:

FROM: ONE-ACRE RESIDENTIAL ZONE (RA)
TO: SINGLE FAMILY RESIDENTIAL (12) ZONE (RF-12)

Portion of Portion of Parcel Identifier: 005-801-419 Lot 34 Section 22
Township 2 New Westminster District Plan 59708, shown on a Survey Plan
attached hereto and forming part of this by-law as Schedule A, certified
correct by Ken W. Schuurman, B.C.L.S. on the 4th day of October, 2007,
called Block D and containing 817.5 square metres and more particularly
described as follows:

Portion of 7341 - 196 Street

2. This By-law shall be cited for all purposes as "Surrey Zoning By-law, 1993, No. 12000,
Amendment By-law, 2008, No. 16676B."

PASSED FIRST AND SECOND READING on the 26th day of May, 2008.

PUBLIC HEARING HELD thereon on the 16th day of June, 2008.

PASSED THIRD READING on the 16th day of June, 2008.

RECONSIDERED AND FINALLY ADOPTED, signed by the Mayor and Clerk, and sealed with the
Corporate Seal on the 1st day of March, 2010.

_____MAYOR

_____CLERK

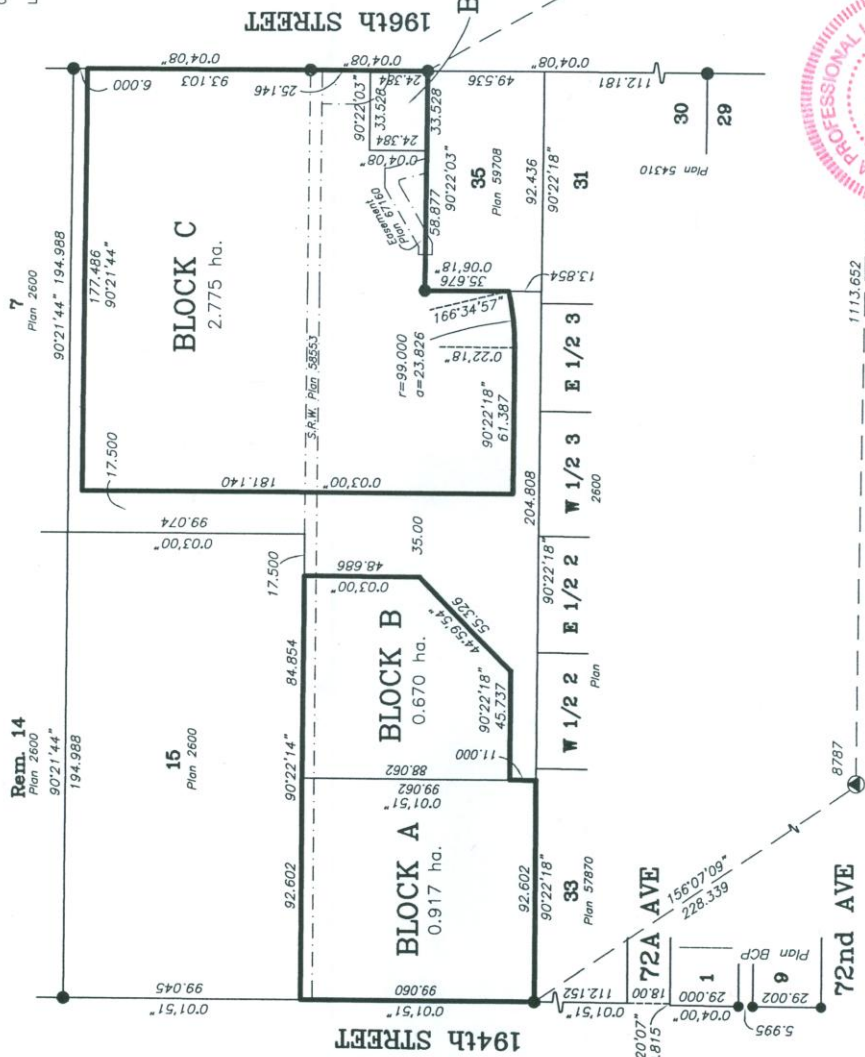
SCHEDULE A

SURVEY PLAN TO ACCOMPANY CITY OF SURREY REZONING BYLAW NO. 16676B OF LOTS 34 AND 36, PLAN 59708 AND LOT 6, PLAN 2600 ALL OF SECTION 22, TOWNSHIP 8, N.W.D.

City of Surrey B.C.G.S. 92G.017

Integrated Survey Area No. 1, Surrey, B.C. Grid bearings are derived from observations between Control Monuments 8787 & 93H1091 NAD 83 (CSRS). The plan shows ground level measured distances, multiplied by a combined factor of 0.9995971.

Legend:
 ● Denotes control monument found
 ○ Denotes monument not found
 ha. Denotes hectares
 m2 Denotes square metres



PROFESSIONAL LAND SURVEYOR
 Kenneth W. Schuurman
 No. 800
 British Columbia



Cameron Land Surveying Ltd.
 B.C. Land Surveyors
 Unit 206 - 16055 Fraser Highway
 Surrey, B.C. V3S 3C3
 Phone: 604-597-3777
 Fax: 604-597-3783

This plan lies within the Greater Vancouver Regional District.
 Certified correct this 4th day of October, 2007.
 Ken W. Schuurman, B.C.L.S.
 File: 4310-ZONING