

CITY OF SURREY

BY-LAW NO. 12870

A by-law to amend "Surrey Zoning By-law, 1993, No. 12000."
.....

The Council of the City of Surrey, in open meeting assembled, ENACTS AS FOLLOWS:

1. "Surrey Zoning By-law, 1993, No. 12000," as amended, is hereby further amended, pursuant to the provisions of Section 963 of the "Municipal Act," and the classification of the following parcels of land, presently shown upon the maps designated as the "Zoning Maps" and marked as Schedule "A" under Part 3 of the said By-law No. 12000, is hereby amended as follows:

**FROM "RESTRICTED SINGLE FAMILY RESIDENTIAL ZONE (R-F-(R))"
TO "MULTIPLE RESIDENTIAL 15 ZONE (RM-15)"**

A Portion of the land known as Lot 7, Section 15, Township 1,
New Westminster District, Plan LMP26301 as shown within heavy bold
line on Map attached hereto as Schedule "A" to this By-law.

(Westerly Portion of 2167 - 152 Street)

2. This By-law shall be cited for all purposes as "Surrey Zoning By-law, 1993, No. 12000, Amendment By-law, 1996, No. 12870."

PASSED FIRST AND SECOND READING on the 25th day of June, 1996.

PUBLIC HEARING HELD thereon on the 16th day of July, 1996.

PASSED THIRD READING on the 22nd day of July, 1996.

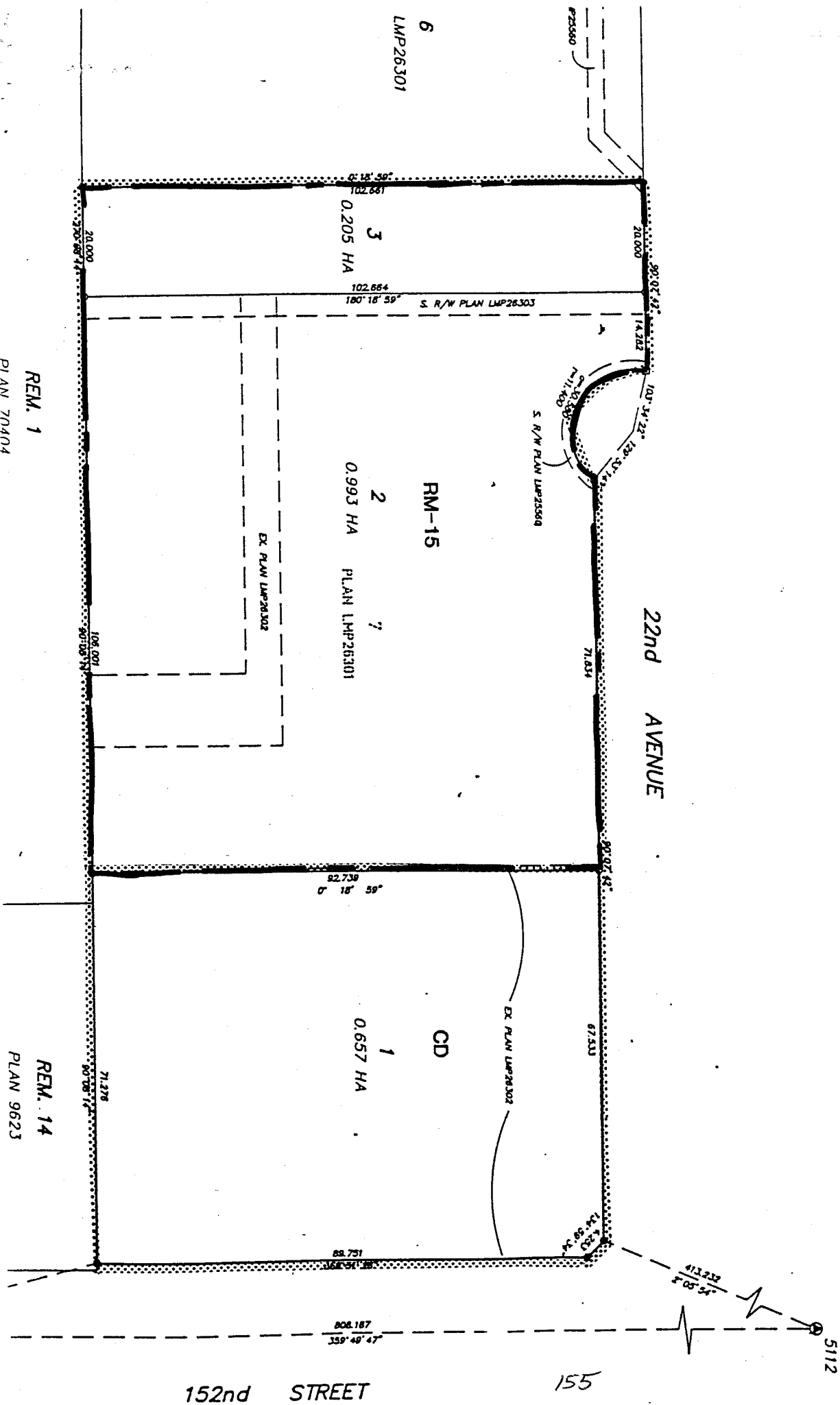
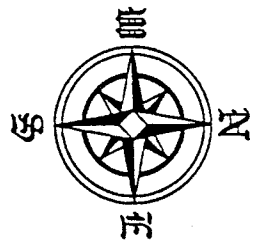
RECONSIDERED AND FINALLY ADOPTED, signed by the Mayor and Clerk, and sealed with the Corporate Seal on the 30th day of September, 1996.

_____MAYOR

_____CLERK

Schedule A

TO BY-LAW
NO. 12870



REM. 1
PLAN 70404

REM. 14
PLAN 9623