

CITY OF SURREY

BY-LAW NO. 12893

A by-law to amend "Surrey Zoning By-law, 1993, No. 12000."
.....

The Council of the City of Surrey, in open meeting assembled, ENACTS AS FOLLOWS:

1. "Surrey Zoning By-law, 1993, No. 12000," as amended, is hereby further amended, pursuant to the provisions of Section 963 of the "Municipal Act," and the classification of the following parcels of land, presently shown upon the maps designated as the "Zoning Maps" and marked as Schedule "A" under Part 3 of the said By-law No. 12000, is hereby amended as follows:

(a) FROM "LIGHT IMPACT INDUSTRIAL ZONE (IL)"
TO "HIGHWAY COMMERCIAL INDUSTRIAL ZONE (CHI)"

A Portion of the land known as Parcel 1, Section 10, Township 8, New Westminster District, Reference Plan 83212, as shown outlined in heavy black line as Block "A" on Survey Plan attached hereto as Schedule "A" to this by-law.

(Portion of 5674 - 192 Street)

(b) FROM "GENERAL AGRICULTURE ZONE (A-1)"
TO "HIGHWAY COMMERCIAL INDUSTRIAL ZONE (CHI)"

A Portion of the land known as Parcel 1, Section 10, Township 8, New Westminster District, Reference Plan 83212, as shown outlined in heavy black line as Block "B" on Survey Plan attached hereto as Schedule "A" to this by-law.

(Portion of 5674 - 192 Street)

2. This By-law shall be cited for all purposes as "Surrey Zoning By-law, 1993, No. 12000, Amendment By-law, 1996, No. 12893."

PASSED FIRST AND SECOND READING on the 29th day of July, 1996.

PUBLIC HEARING HELD thereon on the 9th day of September, 1996.

PASSED THIRD READING on the 23rd day of September, 1996.

RECONSIDERED AND FINALLY ADOPTED, signed by the Mayor and Clerk, and sealed with the Corporate Seal on the 29th day of July, 1997.

_____MAYOR

_____CLERK

h:\by-laws\by-laws\clk12893.blw

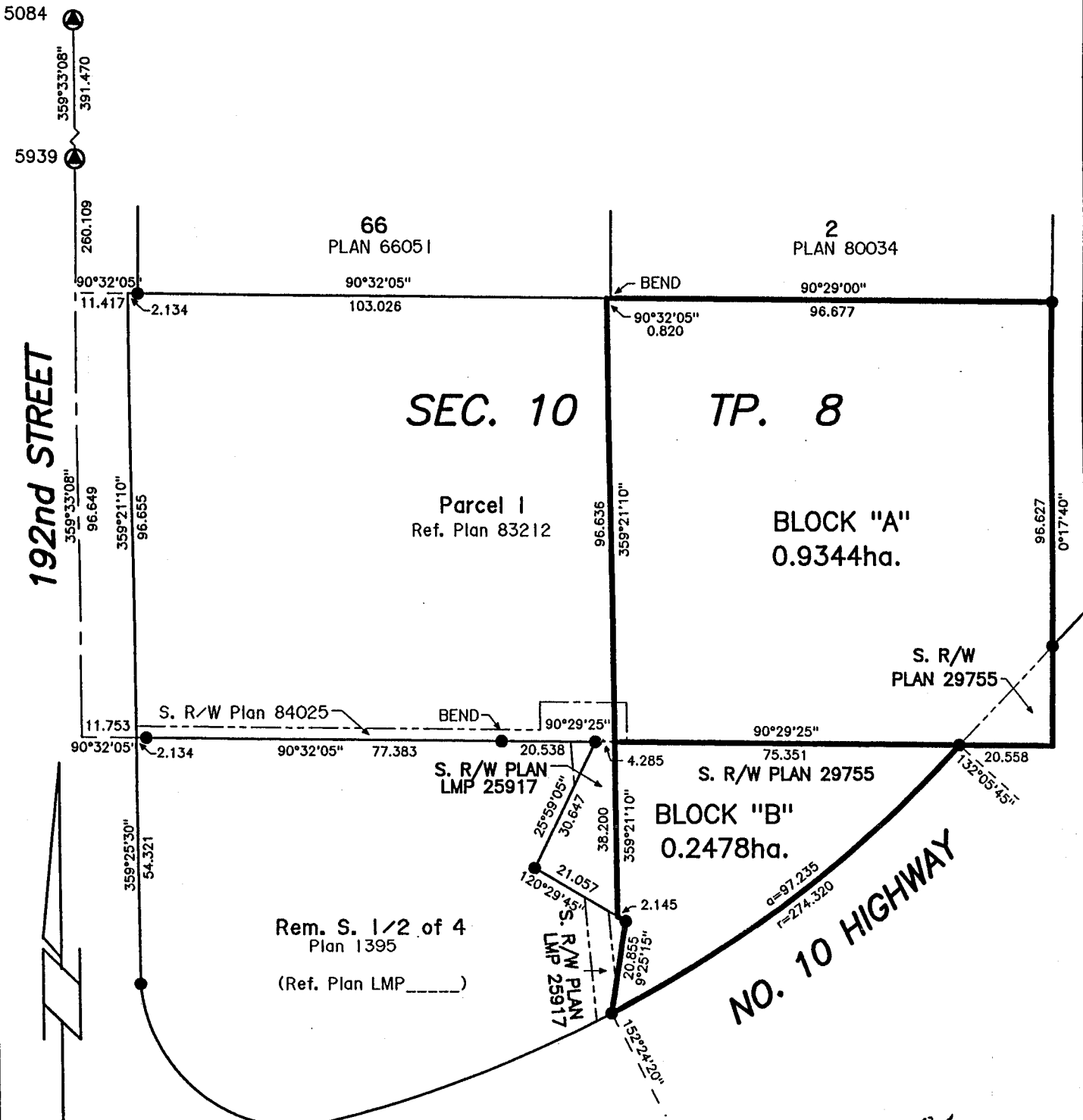
SURVEY PLAN TO ACCOMPANY CITY OF SURREY BYLAW NUMBER 12893 OF PARCEL 1, SECTION 10, TOWNSHIP 8, N.W.D., REFERENCE PLAN 83212.

CITY OF SURREY B.C.G.S. 92G.017
 25 0 25 50 75

GRAPHIC SCALE - METRES - 1:1250
 Integrated Survey Area No. 1, Surrey, B.C.
 Grid bearings are derived from observations between Control Monuments 5084 and 5939.

This Plan shows ground level measured distances. Prior to computation of U.T.M. coordinates, multiply by combined factor 0.99960221.

- LEGEND**
 ● Control Monument found
 ● Iron Post found
 ha. Hectares



Cameron Land Surveying Ltd.
 B.C. Land Surveyors
 Unit 103-8431-160th St.
 Surrey, B.C. V3S 3T9
 Phone: 597-3777
 Fax: 597-3783

This plan lies within the Greater Vancouver Regional District.

Certified correct this 24 day
 of July, 1996

 B.C.L.S.