

CITY OF SURREY

BY-LAW NO. 13295

A by-law to amend the provisions of "Surrey Official
Community Plan By-law, 1996, No. 12900."
.....

The Council of the City of Surrey, in open meeting assembled, ENACTS AS FOLLOWS:

1. That portion of the map designated as Schedule A. Land Use Designation Map, Division A of "Surrey Official Community Plan By-law, 1996, No. 12900," as shown outlined black on the plan attached hereto and designated as "Amendment to Schedule A, Land Use Designation Map is hereby amended as follows:

FROM "SUBURBAN (SUB)" TO "URBAN (URB)"

All or portions of the lands shown in heavy outline on a Survey Plan attached hereto and forming a part of this By-law, certified correct by Paul Bartlett, B.C.L.S. on the 14th day of November, 1997, and containing 2.637 hectares and called Block 'B', and more particularly described as follows:

Parcel Identifier: 009-834-176, South Half Lot 6, Section 13, Block 5 North, Range 1 West, New Westminster District, Plan 13568;

(16613 - 108 Avenue)

Parcel Identifier: 009-834-206, Portion of Lot 7, Section 13, Block 5 North, Range 1 West, New Westminster District, Plan 13568; and

(Portion of 16599 - 108 Avenue)

Parcel Identifier: 009-834-133, Portion of North Half Lot 6, Section 13, Block 5 North, Range 1 West, New Westminster District, Plan 13568.

(Portion of 16638 - 110 Avenue)

2. This By-law shall be cited for all purposes as "Surrey Official Community Plan By-law, 1996, No. 12900, No. 4 Amendment By-law, 1997, No. 13295."

PASSED FIRST AND SECOND READING on the 2nd day of December, 1997.

PUBLIC HEARING HELD thereon on the 19th day of January, 1998.

PASSED THIRD READING on the 19th day of January, 1998.

RECONSIDERED AND FINALLY ADOPTED, signed by the Mayor and Clerk, and sealed with the Corporate Seal on the 25th day of May, 1998.

_____MAYOR

_____CLERK

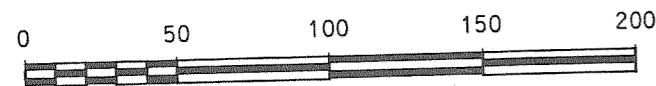
SURVEY PLAN TO ACCOMPANY CITY OF SURREY BYLAW NUMBER 13295 COVERING

- NORTH HALF OF LOT 6;
- SOUTH HALF OF LOT 6;
- LOT 7;

ALL OF SECTION 13, BLOCK 5 NORTH, RANGE 1 WEST,
NEW WESTMINSTER DISTRICT,
PLAN 13568.

B.C.G.S. 92G.027
CITY OF SURREY
-FOR ZONING PURPOSES

SCALE: 1:2500



(ALL DISTANCES ARE IN METRES)

INTEGRATED SURVEY AREA NO.1 (SURREY)

THIS PLAN SHOWS GROUND - LEVEL MEASURED DISTANCES.
PRIOR TO COMPUTATION OF U.T.M. CO-ORDINATES,
MULTIPLY BY COMBINED FACTOR 0.9995980

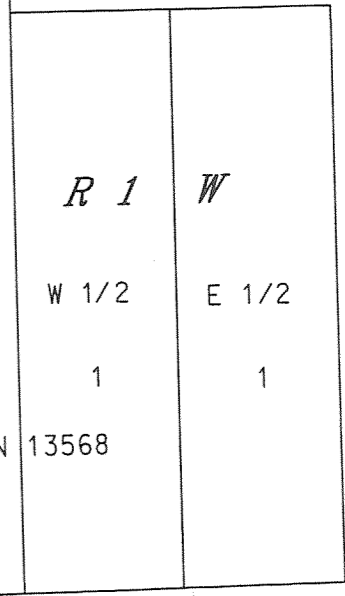
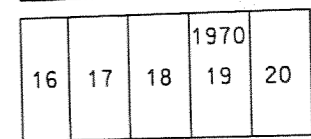
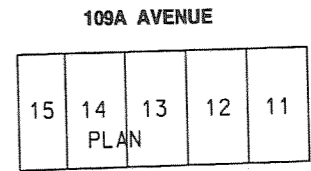
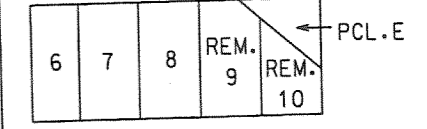
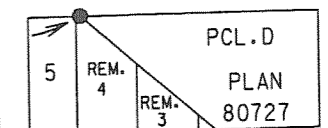
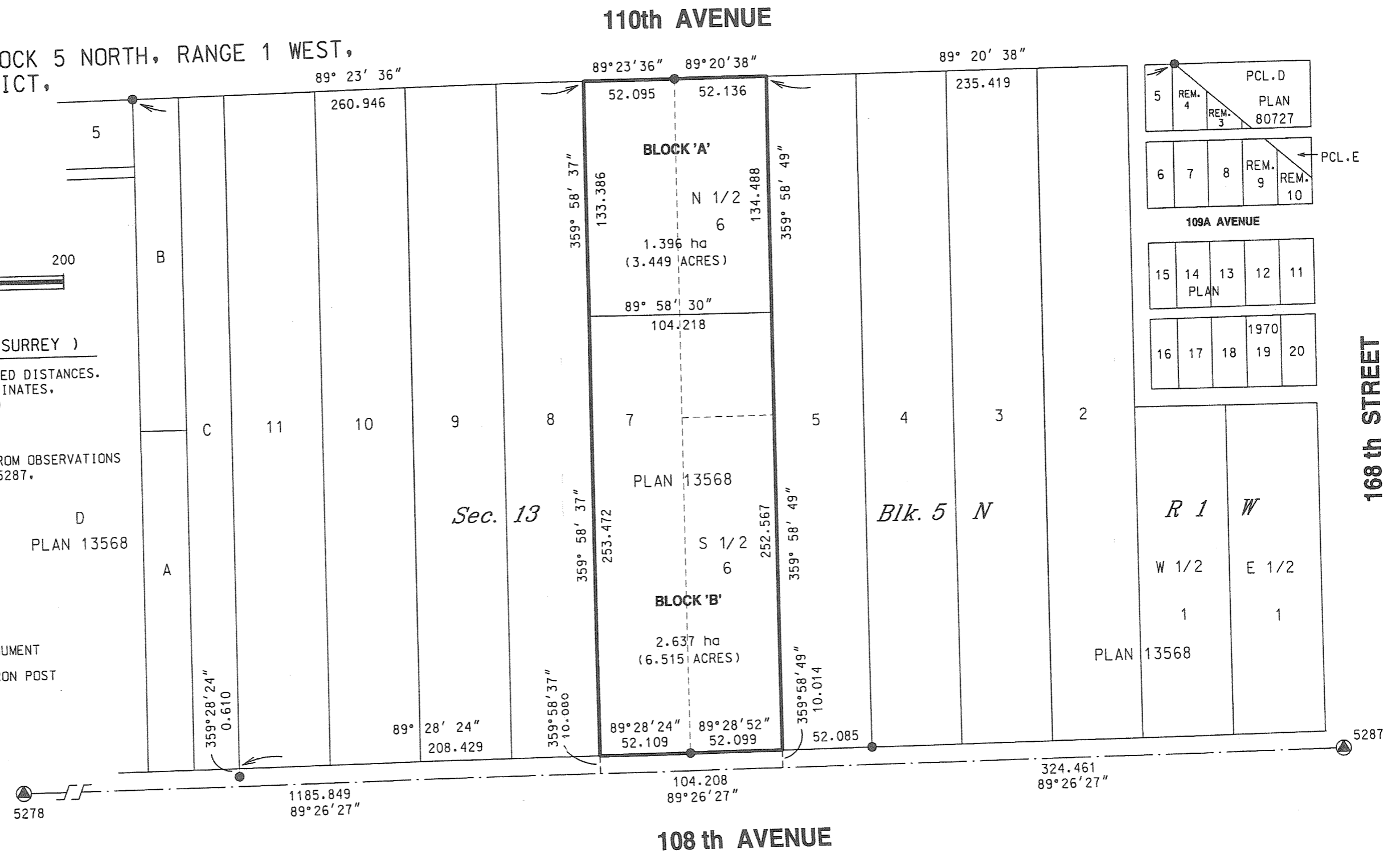
LEGEND

GRID BEARINGS (NAD83) ARE DERIVED FROM OBSERVATIONS
BETWEEN CONTROL MONUMENTS 5278 AND 5287,
INTEGRATED SURVEY AREA NO.1

SYMBOLS FOUND PLACED DESCRIPTION

Control Monument: CONTROL MONUMENT

Standard Iron Post: STANDARD IRON POST



CERTIFIED CORRECT
THIS 14th DAY OF NOVEMBER, 1997

PAUL BARTLETT B.C.L.S.

McELHANNEY ASSOCIATES
PROFESSIONAL LAND SURVEYORS
13160-88th. AVENUE
SURREY, B.C. V3W 3K3
PHONE: (604) 596-0391
FILE : 2112 61410-1

THIS PLAN LIES WITHIN THE GREATER VANCOUVER REGIONAL DISTRICT