

CITY OF SURREY

BY-LAW NO. 13313

A by-law to amend Surrey Zoning By-law, 1993, No. 12000,
as amended.

.....

The Council of the City of Surrey, in open meeting assembled, ENACTS AS FOLLOWS:

1. Surrey Zoning By-law, 1993, No. 12000, as amended, is hereby further amended, pursuant to the provisions of Section 903 of the Municipal Act R.S.B.C. 1996 Chapter 323, by changing the classification of the following parcels of land, presently shown upon the maps designated as the Zoning Maps and marked as Schedule "A" under Part 3 of Surrey Zoning By-law, 1993, No. 12000, as amended, as follows:

FROM "SINGLE FAMILY RESIDENTIAL SECONDARY SUITE ZONE (RF-SS)" AND "SINGLE FAMILY RESIDENTIAL ZONE (RF)" TO "SINGLE FAMILY RESIDENTIAL SECONDARY SUITE ZONE (RF-SS) "

Portions of the lands shown in heavy outline on a Survey Plan attached hereto as Schedule A and forming a part of this By-law, certified correct by Sukhminder Singh Dhaliwal, B.C.L.S. on the 16th day of December, 1997, and containing 681 square metres, and more particularly described as follows:

Parcel Identifier: 023-631-775, Lot B, Section 18, Township 2, New Westminster District, Plan LMP31172; and

(Portion of 6929 - 128 Street)

Parcel Identifier: 017-538-921, Lot 62, Section 18, Township 2, New Westminster District, Plan LMP1917.

(Portion of 6915 - 128 Street)

2. This By-law shall be cited for all purposes as "Surrey Zoning By-law, 1993, No. 12000, Amendment By-law, 1997, No. 13313."

PASSED FIRST AND SECOND READING on the 16th day of December, 1997.

PUBLIC HEARING HELD thereon on the 19th day of January, 1998.

PASSED THIRD READING on the 26th day of January, 1998.

RECONSIDERED AND FINALLY ADOPTED, signed by the Mayor and Clerk, and sealed with the Corporate Seal on the 1st day of September, 1998.

_____MAYOR

_____CLERK

h:\by-laws\by-laws\clk13313.blw

**SURVEY PLAN TO ACCOMPANY CITY OF SURREY
BYLAW PLAN # 13313 OF PART LOT 62 PLAN LMP1917,
AND PART LOT B PLAN LMP31172, BOTH OF SEC 18
TOWNSHIP 2 NEW WESTMINSTER DISTRICT.**

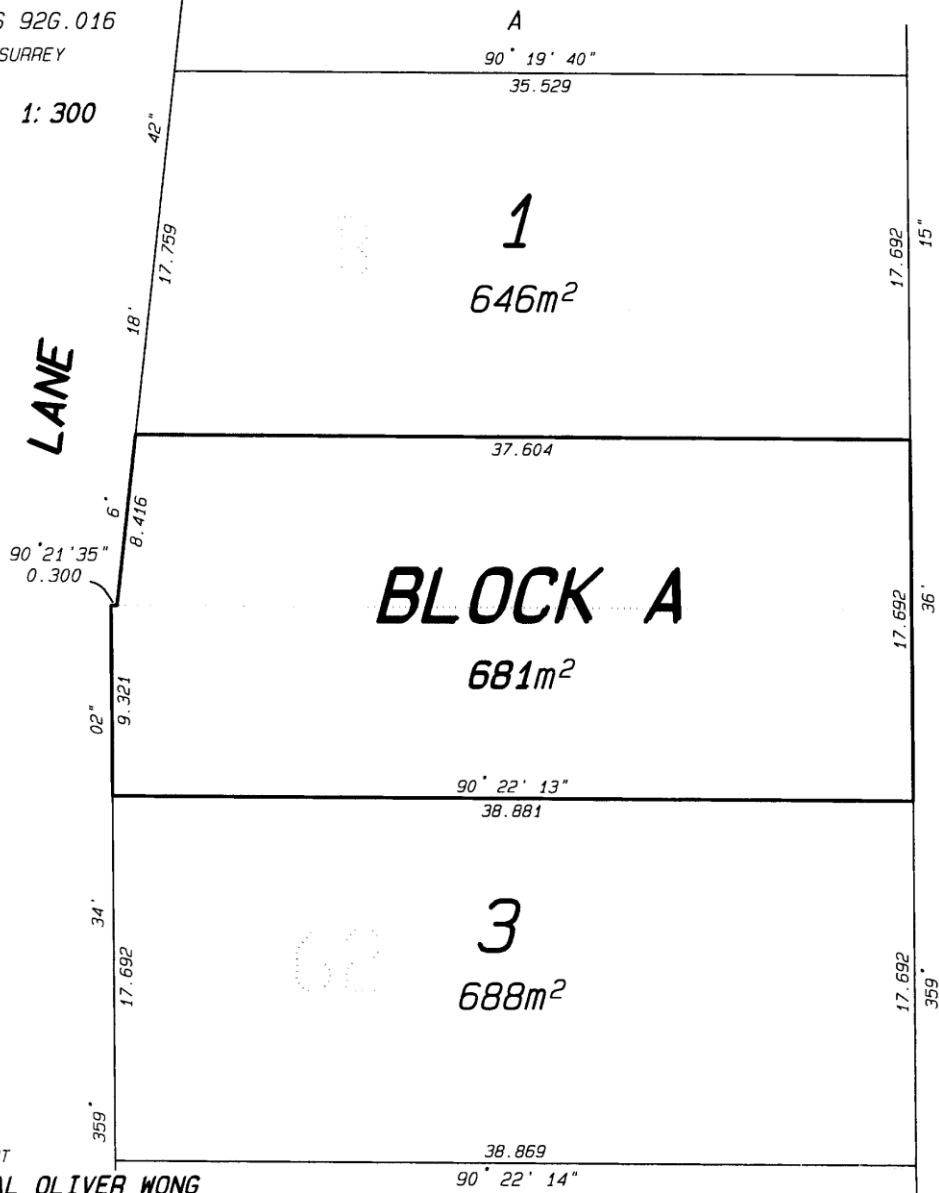
B.C.G.S 926.016
CITY OF SURREY

SCALE 1: 300



LANE

128th STREET



1
646m²

BLOCK A
681m²

3
688m²

© COPYRIGHT

DHALIWAL OLIVER WONG
PROFESSIONAL LAND SURVEYING INC.
121-13140 80th Avenue
Surrey, B.C.
V3W 3B2
(ph) 501-6188
(fx) 501-6189

File: 97080595.SM3

DATE OF SURVEY:
16th DAY OF DECEMBER 1997

61

Sukh Minder Singh Dhalawal

THIS DOCUMENT IS NOT VALID UNLESS
ORIGINALLY SIGNED AND SEALED

SUKH MINDER SINGH DHALIWAL
B.C.L.S. #756