

CITY OF SURREY

BY-LAW NO. 13376

A by-law to amend Surrey Zoning By-law, 1993, No. 12000,
as amended.

.....

The Council of the City of Surrey, in open meeting assembled, ENACTS AS FOLLOWS:

1. Surrey Zoning By-law, 1993, No. 12000, as amended, is hereby further amended, pursuant to the provisions of Section 903 of the Municipal Act R.S.B.C. 1996 Chapter 323, by changing the classification of the following parcels of land, presently shown upon the maps designated as the Zoning Maps and marked as Schedule "A" under Part 3 of Surrey Zoning By-law, 1993, No. 12000, as amended, as follows:

FROM "ONE-ACRE RESIDENTIAL ZONE (RA)"
TO "SINGLE FAMILY RESIDENTIAL ZONE (RF)"

That portion of Parcel Identifier: 012-194-824, Lot 24, Section 17, Township 8, New Westminster District, Plan 1510, as shown in heavy outline on a Survey Plan, attached hereto and forming a part of this By-law as Schedule A, certified correct by G.A. Hol, B.C.L.S., on the 23rd day of March, 1998, and containing 0.858 hectares and called Block 'A'.

(Portion of 18155 - 68 Avenue)

2. This By-law shall be cited for all purposes as "Surrey Zoning By-law, 1993, No. 12000, Amendment By-law, 1998, No. 13376."

PASSED FIRST AND SECOND READING on the 24th day of March, 1998.

PUBLIC HEARING HELD thereon on the 20th day of April, 1998.

PASSED THIRD READING on the 20th day of April, 1998.

RECONSIDERED AND FINALLY ADOPTED, signed by the Mayor and Clerk, and sealed with the Corporate Seal on the 22nd day of June, 1998.

_____MAYOR

_____CLERK

h:\by-laws\by-laws\clk13376.blw
CYY 06/21/11 09:19 AM

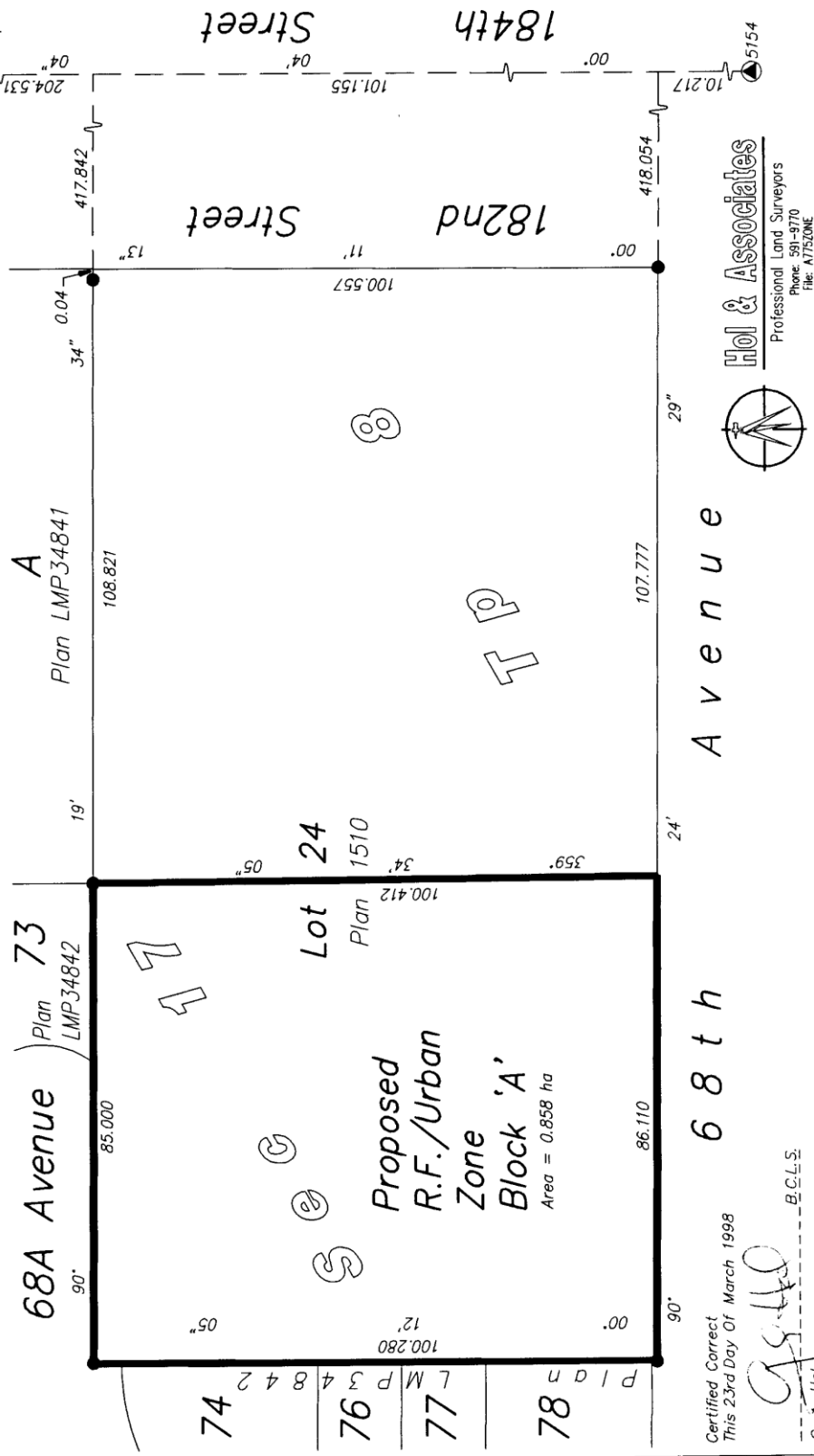
Survey Plan To Accompany City Of Surrey Rezoning Bylaw No. 13376 - Of Part Of Lot 24 Sec 17 Tp 8 N.W.D. Plan 1510 B.C.G.S. 92G.017

Scale: 1 : 1000 Metric
Integrated Survey No.1 (Surrey) NAD 83

Legend

Grid Bearings Are Derived From Observations Between Control Monuments 5154 & 5699
All Distances Are In Metres And Decimals Thereof

- Iron Post Found
- ⊙ Control Monument Found



Certified Correct
This 23rd Day Of March 1998

G. A. Hol
G. A. Hol

Hol & Associates
Professional Land Surveyors
Phone: 991-9770
File: A75ZONE