

CITY OF SURREY

BY-LAW NO. 14127

A by-law to amend "Surrey Zoning By-law, 1993, No. 12000,"  
as amended.

.....

The Council of the City of Surrey, in open meeting assembled, ENACTS AS FOLLOWS:

1. Surrey Zoning By-law, 1993, No. 12000, as amended, is hereby further amended pursuant to the provisions of Section 903 of the *Local Government Act*, R.S.B.C. 1996, c.323, as amended, by changing the classification of the following parcels of land, presently shown upon the maps designated as the Zoning Maps and marked as Schedule "A" under Part 3 of Surrey Zoning By-law, 1993, No. 12000, as amended, as follows:

FROM: GENERAL AGRICULTURE ZONE (A-1)  
TO: MULTIPLE RESIDENTIAL 15 ZONE (RM-15)

All or portions of land shown in heavy outline on a Survey Plan attached hereto and forming part of this by-law as Schedule A, prepared by J.G. Cameron, B.C.L.S., on the 12th day of July, 2000, containing 7.580 hectares and more particularly described as follows:

Parcel Identifier: 011-113-731  
West 75 Feet Lot 4 Except: Part Red on By-law Plan 56758, Section 13 Township 2 New Westminster District Plan 4483;

(6410 - 164 Street)

Parcel Identifier: 011-113-669  
Lot 3 Except: East 255 Feet, Section 13 Township 2 New Westminster District Plan 4483;

(16585 - 64 Avenue)

Parcel Identifier: 011-113-642  
East 255 Feet Lot 3 Section 13 Township 2 New Westminster District Plan 4483; and

(16605 - 64 Avenue)

Parcel Identifier: 011-113-618  
Lot 2 Section 13 Township 2 New Westminster District Plan 4483.

(16667 - 64 Avenue)

FROM: INTENSIVE AGRICULTURE ZONE (A-2)  
TO: MULTIPLE RESIDENTIAL 15 ZONE (RM-15)

---

Parcel Identifier: 003-436-004  
Lot 4 Except: Firstly: The West 75 Feet; Secondly: Part on Bylaw  
Plan 56758; Section 13 Township 2 New Westminster District  
Plan 4483.

(16423 - 64 Avenue)

2. This By-law shall be cited for all purposes as "Surrey Zoning By-law, 1993, No. 12000, Amendment By-law, 2000, No. 14127."

PASSED FIRST AND SECOND READING on the 2nd day of October, 2000.

PUBLIC HEARING HELD thereon on the 16th day of October, 2000.

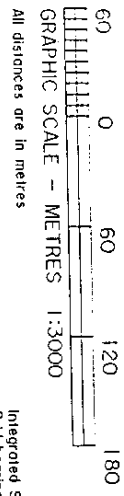
PASSED THIRD READING on the 16th day of October, 2000.

RECONSIDERED AND FINALLY ADOPTED, signed by the Mayor and Clerk, and sealed with the Corporate Seal on the 16th day of July, 2001.

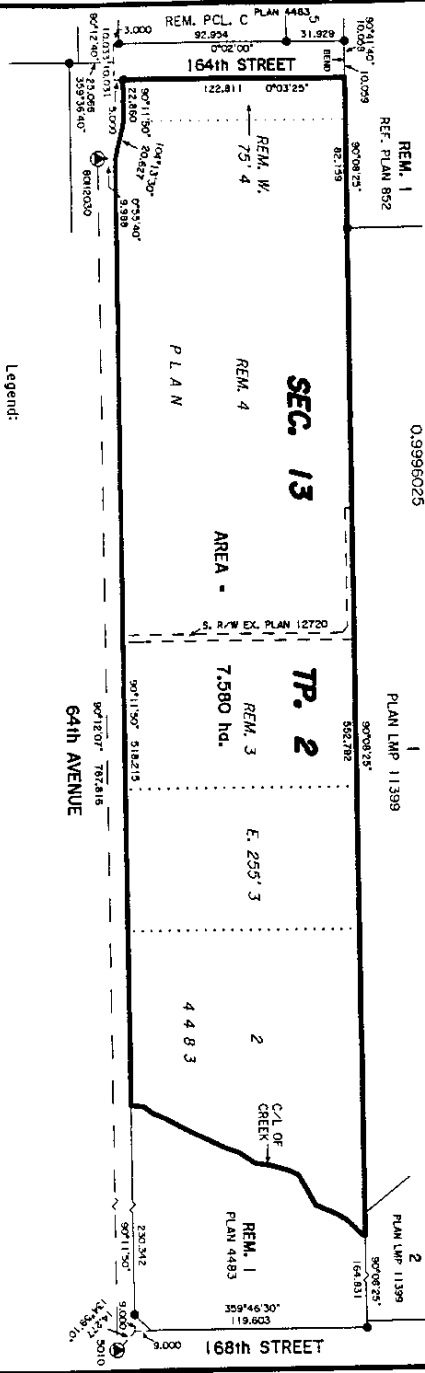
\_\_\_\_\_MAYOR

\_\_\_\_\_CLERK

**SURVEY PLAN TO ACCOMPANY CITY OF SURREY BYLAW NUMBER 14127-  
 OF LOT 2; EAST 255 FEET LOT 3; LOT 3 EXCEPT: EAST 255 FEET; LOT 4  
 EXCEPT FIRSTLY: THE WEST 75 FEET, SECONDLY: PART ON BYLAW PLAN  
 56758; WEST 75 FEET LOT 4 EXCEPT: PART RED ON BYLAW PLAN 56758;  
 ALL OF SECTION 13, TOWNSHIP 2, N.W.D., PLAN 4483**



Integrated Survey Area No. 1, Surrey, B.C.  
 Grid bearings are derived from observations  
 between Control Monuments 5010 & 90H2030  
 NAD 83 (CSRS)  
 This Plan shows ground level measured  
 distances. Prior to computation of U.T.M.  
 coordinates, multiply by combined factor  
 0.9996025



Legend:  
 ● Control monument found  
 ● Iron post found  
 hd. Hectares

Cameron Land Surveying Ltd.  
 B.C. Land Surveyors  
 Unit 203-6533-148th St.  
 Surrey, B.C. V3S 3C3  
 Phone: 597-3777  
 Fax: 597-3793

This plan lies within the Greater  
 Vancouver Regional District.

Certified correct this 12<sup>th</sup> day  
 of July, 2000.  
 \_\_\_\_\_  
 B.C.L.S.  
 File: 3812-BY