

CITY OF SURREY

BY-LAW NO. 14139

A by-law to amend "Surrey Zoning By-law, 1993, No. 12000,"
as amended.

.....

The Council of the City of Surrey, in open meeting assembled, ENACTS AS FOLLOWS:

1. Surrey Zoning By-law, 1993, No. 12000, as amended, is hereby further amended pursuant to the provisions of Section 903 of the *Local Government Act*, R.S.B.C. 1996, c.323, as amended, by changing the classification of the following parcels of land, presently shown upon the maps designated as the Zoning Maps and marked as Schedule "A" under Part 3 of Surrey Zoning By-law, 1993, No. 12000, as amended, as follows:

FROM "TOURIST ACCOMMODATION ZONE (CTA)"
TO "TOWN CENTRE COMMERCIAL ZONE (C-15)"

Portion of Parcel Identifier: 011-154-543
Lot 6 Except: Firstly: Part on Statutory Right of Way
Plan 5719 Secondly: North Easterly 66 Feet Thirdly:
Part on Plan 26410, Section 15 Block 5 North Range 2
West New Westminster District Plan 5347, shown in
heavy outline on Survey Plan attached hereto and
forming part of this by-law, prepared by Eugene O.
Wong, B.C.L.S. on the 28th day of September, 2000,
containing 0.242 hectares and more particularly known
as:

(Portion of 13375 King George Highway)

2. This By-law shall be cited for all purposes as "Surrey Zoning By-law, 1993, No. 12000, Amendment By-law, 2000, No. 14139."

PASSED FIRST AND SECOND READING on the 2nd day of October, 2000.

PUBLIC HEARING HELD thereon on the 16th day of October, 2000.

PASSED THIRD READING on the 5th day of February, 2001.

RECONSIDERED AND FINALLY ADOPTED, signed by the Mayor and Clerk, and sealed with the Corporate Seal on the 22nd day of July, 2002.

MAYOR

CLERK

h:\by-laws\adopted\2002\clk14139.blw.doc

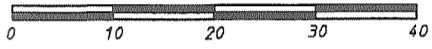
**SURVEY PLAN TO ACCOMPANY CITY OF SURREY
 BYLAW NUMBER 14139 OVER PART OF LOT 6 EXCEPT:
 FIRSTLY: PART ON STATUTORY RIGHT OF WAY PLAN 5719
 SECONDLY: NORTH EASTERLY 66 FEET
 THIRDLY: PART ON PLAN 26410,
 SECTION 15 BLOCK 5 NORTH RANGE 2 WEST
 NEW WESTMINSTER DISTRICT PLAN 5347.**

FOR THE PURPOSE OF REZONING

B. C. G. S 92G. 026
 CITY OF SURREY

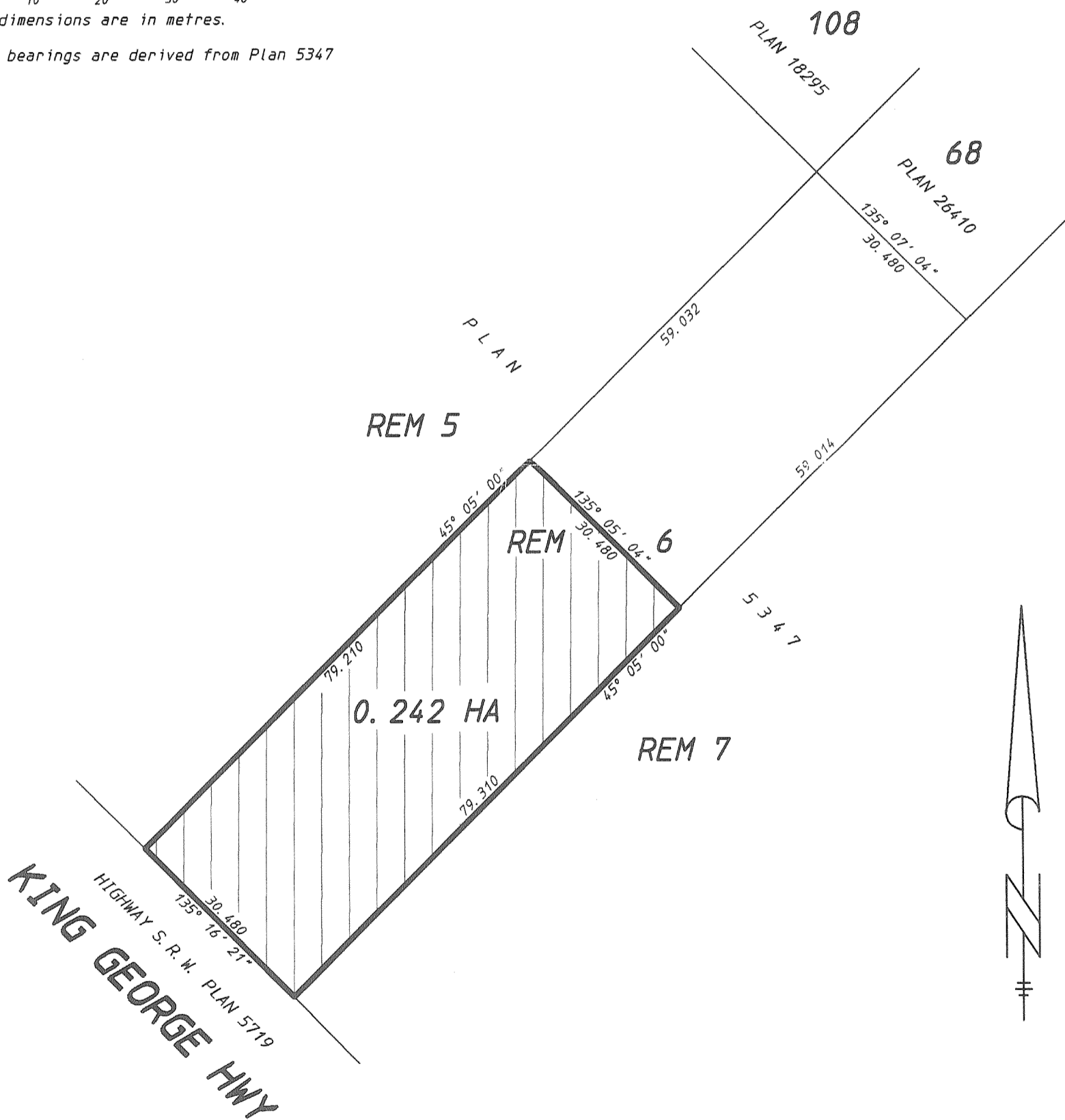
LEGEND

SCALE 1:750



All dimensions are in metres.

Grid bearings are derived from Plan 5347



CERTIFIED CORRECT ACCORDING TO
 LAND TITLE OFFICE RECORDS.
 DATED THIS 28th DAY OF SEPTEMBER 2000

EUGENE OLIVER WONG, B. C. L. S.

THIS DOCUMENT IS NOT VALID UNLESS
 ORIGINALLY SIGNED AND SEALED

© COPYRIGHT
 DHALIWAL OLIVER WONG
 PROFESSIONAL LAND SURVEYING INC.
 121-13140 80th Avenue
 Surrey, B. C.
 V3W 3B2
 (ph) 501-6188
 (fx) 501-6189
 File: Y005066.Z01

This Plan lies within the Greater Vancouver Regional District.