

CITY OF SURREY

BY-LAW NO. 14194

A by-law to amend "Surrey Zoning By-law, 1993, No. 12000,"
as amended.

.....

The Council of the City of Surrey, in open meeting assembled, ENACTS AS FOLLOWS:

1. Surrey Zoning By-law, 1993, No. 12000, as amended, is hereby further amended pursuant to the provisions of Section 903 of the *Local Government Act*, R.S.B.C. 1996, c.323, as amended, by changing the classification of the following parcels of land, presently shown upon the maps designated as the Zoning Maps and marked as Schedule "A" under Part 3 of Surrey Zoning By-law, 1993, No. 12000, as amended, as follows:

FROM: HIGH IMPACT INDUSTRIAL ZONE (IH)
TO: LIGHT IMPACT INDUSTRIAL ZONE (IL)

Portion of Parcel Identifier: 017-853-991 Lot A Section 20
Township 2 New Westminster District Plan LMP3414, shown in
outline on Survey Plan attached hereto and forming part of this by-
law, prepared by Paul Bartlett, B.C.L.S. on the 24th day of November,
2000, containing 0.515 hectares and called Block 'A'.

(Portion of 13101 - 78A Avenue)

2. This By-law shall be cited for all purposes as "Surrey Zoning By-law, 1993, No. 12000,
Amendment By-law, 2000, No. 14194."

PASSED FIRST AND SECOND READING on the 4th day of December, 2000.

PUBLIC HEARING HELD thereon on the 22nd day of January, 2001.

PASSED THIRD READING on the 22nd day of January, 2001.

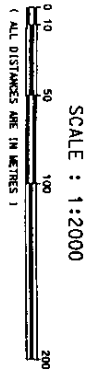
RECONSIDERED AND FINALLY ADOPTED, signed by the Mayor and Clerk, and sealed with the Corporate Seal on the 30th day of July, 2001.

_____MAYOR

_____CLERK

h:\by-laws\adopted\2001\clk14194.blw.doc
LN1 6/20/11 1:11 PM

SURVEY PLAN TO ACCOMPANY CITY OF SURREY BYLAW NUMBER COVERING
 PART OF LOT A,
 SECTION 20, TOWNSHIP 2,
 NEW WESTMINSTER DISTRICT,
 PLAN LMP3414,
 B.C.G.S. 926.027



INTEGRATED SURVEY AREA NO.1 (SURVEY)
 THIS PLAN SHOWS GROUND - LEVEL MEASURED DISTANCES,
 BETWEEN CONTROL MONUMENTS 5926 AND 8720,
 MULTIPLY BY CORRECTION FACTOR 0.9999941.

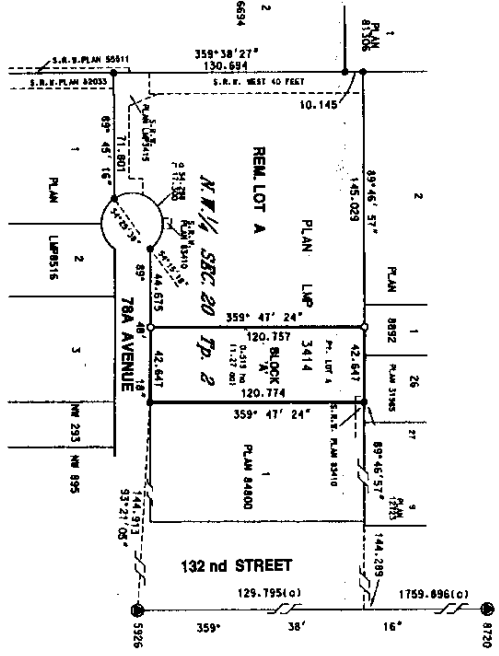
LEGEND
 GRID BEARINGS ARE MAGN. (G.M.S.) AND ARE DERIVED FROM OBSERVATIONS
 BETWEEN CONTROL MONUMENTS 5926 AND 8720,
 INTEGRATED SURVEY AREA NO.1

SYMBOLS	DESCRIPTION
●	FOUND PLACED
○	CONTROL MONUMENT
○	STANDARD IRON POST

CERTIFIED CORRECT
 THIS 24th DAY OF NOVEMBER, 2000.

Paul Martlett
 PAUL MARTELLET
 B.C.L.S.

THIS PLAN LIES WITHIN THE GREATER VANCOUVER REGIONAL DISTRICT



MEJLANNKY ASSOCIATES
 PROFESSIONAL SURVEYORS
 1310-81st AVENUE
 SURREY, B.C. V3W 3K3
 PHONE: (604) 598-0387
 FILE: 1 2172 0645-3