

CITY OF SURREY

BY-LAW NO. 14198

A by-law to amend "Surrey Zoning By-law, 1993, No. 12000,"  
as amended.

.....

The Council of the City of Surrey, in open meeting assembled, ENACTS AS FOLLOWS:

1. Surrey Zoning By-law, 1993, No. 12000, as amended, is hereby further amended pursuant to the provisions of Section 903 of the *Local Government Act*, R.S.B.C. 1996, c.323, as amended, by changing the classification of the following parcels of land, presently shown upon the maps designated as the Zoning Maps and marked as Schedule "A" under Part 3 of Surrey Zoning By-law, 1993, No. 12000, as amended, as follows:

FROM: ONE-ACRE RESIDENTIAL ZONE (RA)  
TO: SINGLE FAMILY RESIDENTIAL ZONE (RF)

Portion of Parcel Identifier: 006-060-251  
Lot 6 Section 12 Township 2 New Westminster District Plan 6427,  
shown in outline on Survey Plan attached hereto and forming part of  
this by-law, prepared by L. Achtemichuk, B.C.L.S. on the 24th day of  
November, 2000, containing 1223 square metres and more  
particularly described as follows:

(Portion of 16709 - 60 Avenue)

2. This By-law shall be cited for all purposes as "Surrey Zoning By-law, 1993, No. 12000, Amendment By-law, 2000, No. 14198."

PASSED FIRST AND SECOND READING on the 4th day of December, 2000.

PUBLIC HEARING HELD thereon on the 22nd day of January, 2001.

PASSED THIRD READING on the 22nd day of January, 2001.

RECONSIDERED AND FINALLY ADOPTED, signed by the Mayor and Clerk, and sealed with the Corporate Seal on the 23rd day of July, 2001.

\_\_\_\_\_MAYOR

\_\_\_\_\_CLERK

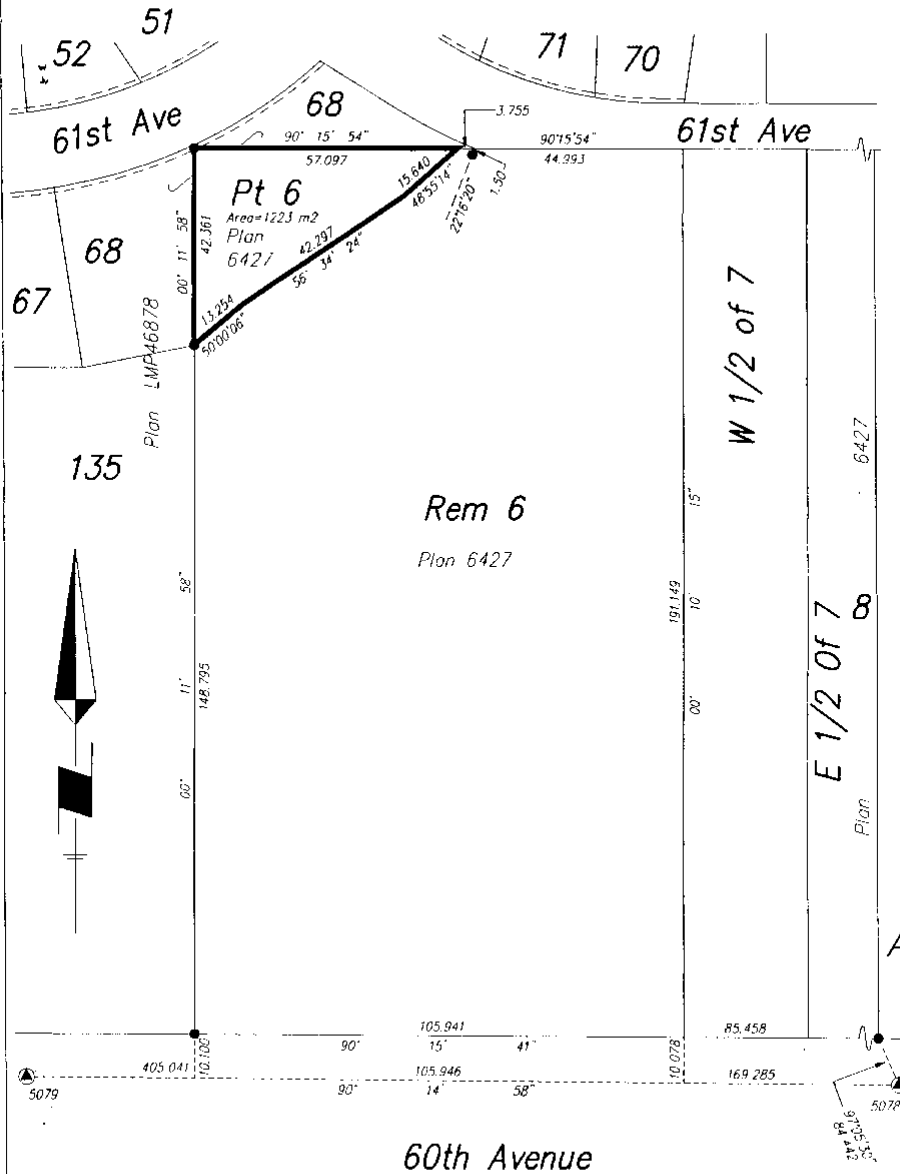
h:\by-laws\adopted\2001\clk14198.blw.doc  
LN1 6/20/11 1:13 PM

Survey Plan to Accompany The City Of Surrey Rezoning  
 By-Law No. 14198 For Part Of Lot 6 Section 12  
 Tp 2 N.W.D. Plan 6427, To Be Rezoned From RA To RF

Scale: 1:1000 Metric

Legend:

- ▲ Control Monuments Found
- Standard Iron Post Found



Certified Correct  
 Date: 24 November 2000

*[Signature]*  
 J. Archibald R.C.S.



**Hol & Associates**  
 Professional Land Surveyors  
 Phone: 591-9770  
 File: A390Zone1

