

CITY OF SURREY

BY-LAW NO. 14336

A by-law to amend "Surrey Zoning By-law, 1993, No. 12000,"
as amended.

.....

The Council of the City of Surrey, in open meeting assembled, ENACTS AS FOLLOWS:

1. Surrey Zoning By-law, 1993, No. 12000, as amended, is hereby further amended pursuant to the provisions of Section 903 of the *Local Government Act*, R.S.B.C. 1996, c.323, as amended, by changing the classification of the following parcels of land, presently shown upon the maps designated as the Zoning Maps and marked as Schedule "A" under Part 3 of Surrey Zoning By-law, 1993, No. 12000, as amended, as follows:

FROM: SELF-SERVICE GAS STATION ZONE (CG-1)
TO: COMMUNITY COMMERCIAL ZONE (C-8)

Parcel Identifier: 006-383-122
Portion of Lot 67 Except: Part on Bylaw Plan 54892; Section 20 Block 5 North Range 1 West New Westminster District Plan 42258 shown on Survey Plan attached hereto and forming part of this by-law, certified correct by David LePatourel, B.C.L.S., on the 5th day of December, 2000, containing 1049.9 square metres and more particularly described as follows:

(Portion of 10483 - 152 Street)

FROM: COMMUNITY COMMERCIAL ZONE (C-8)
TO: SELF-SERVICE GAS STATION ZONE (CG-1)

Parcel Identifier: 006-370-811
Portion of Lot 66 Except: Part Subdivided by Plan 54688; Section 20 Block 5 North Range 1 West New Westminster District Plan 42258 shown on Survey Plan attached hereto and forming part of this by-law, certified correct by David LePatourel, B.C.L.S., on the 5th day of December, 2000, containing 122.6 square metres and more particularly described as follows:

(Portion of 1730 Guildford Town Centre)

2. This By-law shall be cited for all purposes as "Surrey Zoning By-law, 1993, No. 12000, Amendment By-law, 2001, No. 14336."

PASSED FIRST AND SECOND READING on the 19th day of February, 2001.

PUBLIC HEARING HELD thereon on the 26th day of March, 2001.

PASSED THIRD READING on the 26th day of March, 2001.

RECONSIDERED AND FINALLY ADOPTED, signed by the Mayor and Clerk, and sealed with the Corporate Seal on the 23rd day of April, 2001.

_____MAYOR

_____CLERK

h:\by-laws\adopted\2001\clk14336.blw.doc

SURVEY PLAN TO ACCOMPANY CITY OF SURREY BYLAW #
OF PART OF LOT 66 EXCEPT: PART SUBDIVIDED BY PLAN 54688
AND PART OF LOT 67 EXCEPT: PART ON BYLAW PLAN 54892
BOTH OF SECTION 20, BLOCK 5 NORTH RANGE 1 WEST
NEW WESTMINSTER DISTRICT, PLAN 42258, CITY OF SURREY, B.C.

SCALE : 1 : 500

ALL DISTANCES SHOWN ARE IN METRES

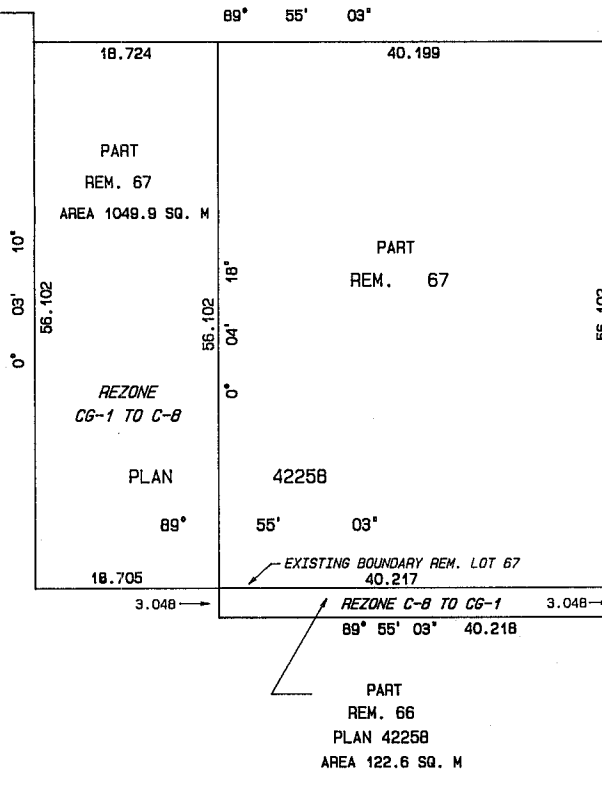


105TH AVE

152ND STREET



REM. 66
 PLAN 42258



CERTIFIED CORRECT ACCORDING TO SURVEY:
 DECEMBER 5, 2000

[Signature]
 B.C.L.S.

LEGEND

ha indicates hectares
 sq. m indicates square metres

HERMON, BUNBURY & OKE,
 PROFESSIONAL LAND SURVEYORS,
 VANCOUVER, B.C. 604 687 6841
 J-2000-118 FB 1739 P. 125-131

\\AUG00E\2000-118.ZON

S-9783

ORIGINAL Feb 27/01