

CITY OF SURREY

BY-LAW NO. 14556

A by-law to amend "Surrey Zoning By-law, 1993, No. 12000,"  
as amended.

.....

The Council of the City of Surrey, in open meeting assembled, ENACTS AS FOLLOWS:

1. Surrey Zoning By-law, 1993, No. 12000, as amended, is hereby further amended pursuant to the provisions of Section 903 of the *Local Government Act*, R.S.B.C. 1996, c.323, as amended, by changing the classification of the following parcels of land, presently shown upon the maps designated as the Zoning Maps and marked as Schedule "A" under Part 3 of Surrey Zoning By-law, 1993, No. 12000, as amended, as follows:

FROM: ONE-ACRE RESIDENTIAL ZONE (RA)  
TO: SINGLE FAMILY RESIDENTIAL (12) ZONE (RF-12)

Portion of Parcel Identifier: 007-442-670 Lot A Except: Part Dedicated Road on Plan LMP40452; Section 36 Township 2 New Westminster District Plan 17105, shown on a Survey Plan attached hereto and forming part of this by-law, certified correct by J.M. Bresnick on the 10<sup>th</sup> day of November, 2001, containing 2,277 square metres, called Block A and more particularly described as follows:

(Portion of 9220 - 160 Street)

FROM: ONE-ACRE RESIDENTIAL ZONE (RA)  
TO: SINGLE FAMILY RESIDENTIAL ZONE (RF)

Portion of Parcel Identifier: 007-442-670 Lot A Except: Part Dedicated Road on Plan LMP40452; Section 36 Township 2 New Westminster District Plan 17105, shown on a Survey Plan attached hereto and forming part of this by-law, certified correct by J.M. Bresnick on the 10<sup>th</sup> day of November, 2001, containing 2,288 square metres, called Block B and more particularly described as follows:

(Portion of 9220 - 160 Street)

2. This By-law shall be cited for all purposes as "Surrey Zoning By-law, 1993, No. 12000, Amendment By-law, 2001, No. 14556."

PASSED FIRST AND SECOND READING on the 19th day of November, 2001.

PUBLIC HEARING HELD thereon on the 10th day of December, 2001.

PASSED THIRD READING on the 10th day of December, 2001.

RECONSIDERED AND FINALLY ADOPTED, signed by the Mayor and Clerk, and sealed with the Corporate Seal on the 13th day of May, 2002.

\_\_\_\_\_MAYOR

\_\_\_\_\_CLERK

h:\by-laws\adopted\2002\clk14556.blw.doc

**SURVEY PLAN TO ACCOMPANY CITY OF SURREY  
 BYLAW NUMBER 14556 ON LOT A EXCEPT PART DEDICATED  
 ROAD ON PLAN LMP40452; SEC. 36, TP. 2, N.W.D. PLAN 17105**

PLAN LMP \_\_\_\_\_

DEPOSITED IN THE LAND TITLE  
 OFFICE AT NEW WILMINGTON,  
 B.C., THIS \_\_\_\_ DAY OF  
 \_\_\_\_\_, 2001

INTEGRATED SURVEY AREA NO. 1, SURREY, NAD83 (CSRS)  
 GRID BEARINGS ARE DERIVED FROM CM 5068 & CM 5274.  
 THIS PLAN SHOWS GROUND-LEVEL MEASURED DISTANCES. PRIOR TO COMPUTATION  
 OF UTM CO-ORDINATES MULTIPLY BY COMBINED FACTOR 0.9995950.

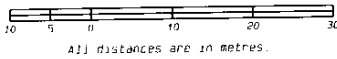
**LEGEND** B.C.G.S. 926.017 CITY OF SURREY

- m denotes square metres
- denotes Iron Post found
- ⊙ denotes Control Monument found

REGISTRAR

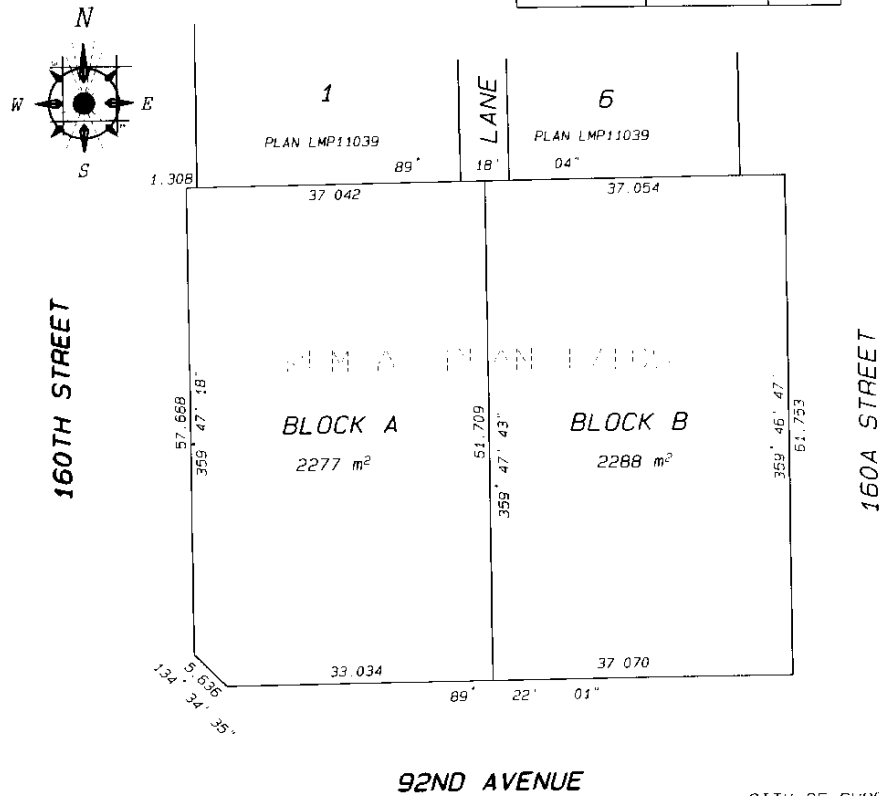
REF. NO. \_\_\_\_\_

**SCALE 1: 500**



**BOOK OF REFERENCE**

DESCRIPTION	PLAN	AREA
BLOCK A	LOT A PLAN 17105	2,277m <sup>2</sup>
BLOCK B	LOT A PLAN 17105	2,288m <sup>2</sup>



**92ND AVENUE**

CITY OF SURREY

MAYOR