

CITY OF SURREY

BY-LAW NO. 14595

A by-law to stop up and close a portion of  
King George Highway at 32 Avenue Diversion.  
.....

WHEREAS the Council of the City of Surrey, pursuant to Section 527(1) of the *Local Government Act*, R.S.B.C. 1996, c.323, as amended, may by by-law, stop up and close to traffic a highway or any portion of a highway;

NOW, THEREFORE, the Council of the City of Surrey, in open meeting assembled, ENACTS AS FOLLOWS:

1. That Portion of Road in Section 22 Township 1 New Westminster District dedicated by Plan 5388 shown in heavy outline on the Reference Plan attached hereto and forming a part of this by-law, duly signed by the Mayor and Clerk, prepared by John Onderwater, B.C.L.S., on the 5th day of November, 2001, containing 239 square metres and more particularly described as follows:

(Portion of King George Highway at 32 Avenue Diversion)

is hereby stopped up and closed to traffic.

2. This By-law may be cited as "Surrey Stop Up and Close of a Portion of King George Highway at 32 Avenue Diversion By-law, 2001, No. 14595."

PASSED THREE READINGS on the 10th day of December, 2001.

NOTICE OF INTENTION

ADVERTISED on the 5th day of January and on the 12th day of January, 2002, in the NOW Community newspaper.

RECONSIDERED AND FINALLY ADOPTED, signed by the Mayor and Clerk, and sealed with the Corporate Seal on the 18th day of February, 2002.

\_\_\_\_\_MAYOR

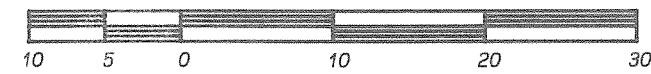
\_\_\_\_\_CLERK

REFERENCE PLAN TO ACCOMPANY CITY OF SURREY ROAD CLOSURE,  
 BYLAW # 14595, OF A PORTION OF ROAD DEDICATED BY  
 PLAN 5388 IN SECTION 22 TOWNSHIP 1 N.W.D.

B.C.G.S. 926.006

PURSUANT TO SECTION 120 OF THE LAND TITLE ACT.

SCALE 1:500



ALL DISTANCES ARE IN METRES

LEGEND:

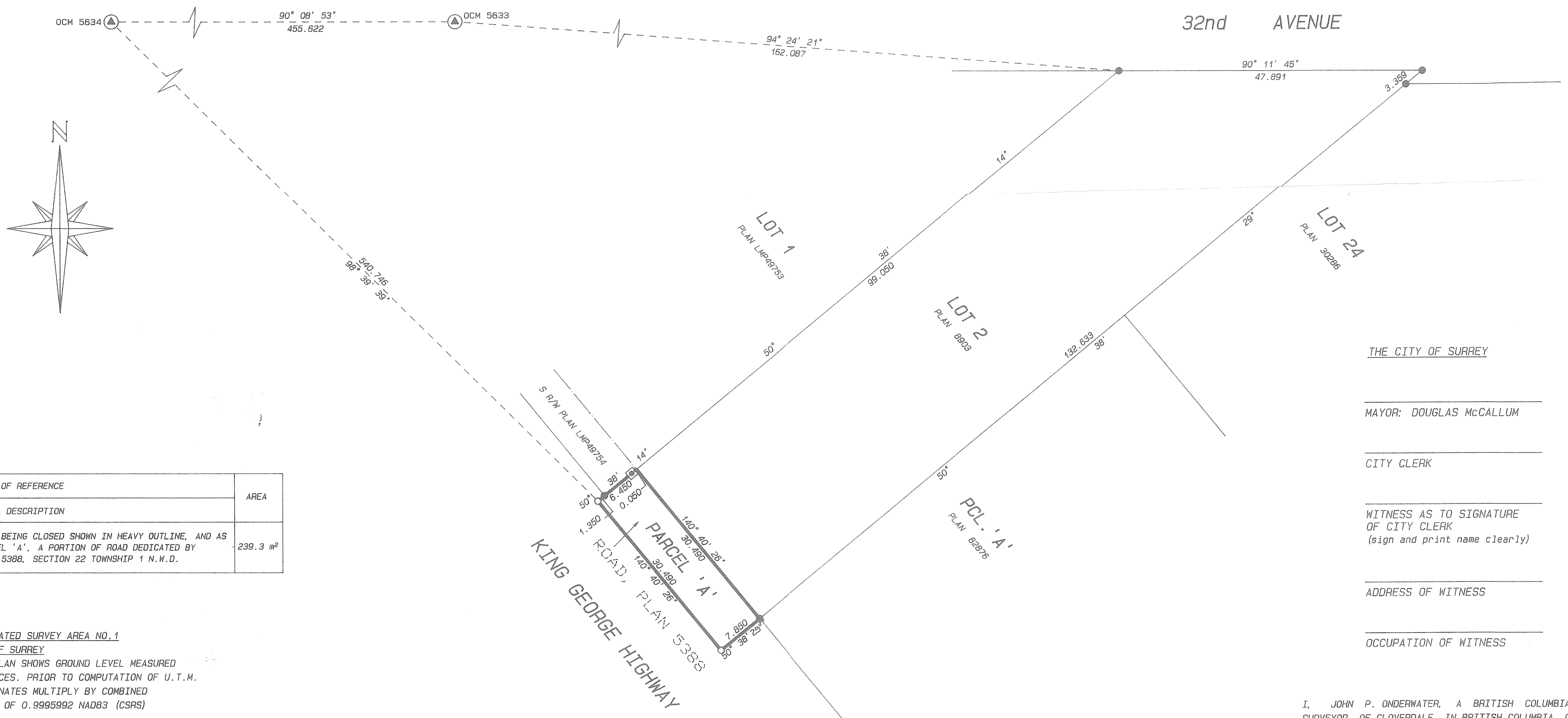
- ⊕ DENOTES CONTROL MONUMENT FOUND
- DENOTES STANDARD IRON POST FOUND
- DENOTES STANDARD IRON POST SET
- ⊠ DENOTES NON STANDARD ROUND IRON POST FOUND

GRID BEARINGS ARE DERIVED FROM  
 OCMS 5633 AND 5634.

PLAN LMP

DEPOSITED IN THE LAND TITLE OFFICE  
 AT NEW WESTMINSTER B.C. ON  
 THIS \_\_\_ DAY OF \_\_\_\_\_, 2001

REF. NO. \_\_\_\_\_ REGISTRAR



THE CITY OF SURREY

MAYOR: DOUGLAS McCALLUM

CITY CLERK

WITNESS AS TO SIGNATURE  
 OF CITY CLERK  
 (sign and print name clearly)

ADDRESS OF WITNESS

OCCUPATION OF WITNESS

BOOK OF REFERENCE	AREA
LEGAL DESCRIPTION	
ROAD BEING CLOSED SHOWN IN HEAVY OUTLINE, AND AS PARCEL 'A', A PORTION OF ROAD DEDICATED BY PLAN 5388, SECTION 22 TOWNSHIP 1 N.W.D.	239.3 m <sup>2</sup>

INTEGRATED SURVEY AREA NO. 1

CITY OF SURREY  
 THIS PLAN SHOWS GROUND LEVEL MEASURED  
 DISTANCES. PRIOR TO COMPUTATION OF U.T.M.  
 COORDINATES MULTIPLY BY COMBINED  
 FACTOR OF 0.9995992 NAD83 (CSRS)

JOHN UNDERWATER & ASSOC.  
 B.C. LAND SURVEYORS  
 CLOVERDALE B.C.  
 PHONE 604-574-7311  
 FAX 604-574-3018  
 FILE: JS 0152.RX

THIS PLAN LIES WITHIN THE  
 GREATER VANCOUVER REGIONAL DISTRICT

I, JOHN P. UNDERWATER, A BRITISH COLUMBIA LAND  
 SURVEYOR, OF CLOVERDALE, IN BRITISH COLUMBIA, CERTIFY  
 THAT I WAS PRESENT AT AND PERSONALLY SUPERINTENDED  
 THE SURVEY REPRESENTED BY THIS PLAN, AND THAT THE  
 SURVEY AND PLAN ARE CORRECT. THE SURVEY WAS COMPLETED  
 ON THE 5th DAY OF NOVEMBER, 2001.

*John P. Underwater*  
 B.C.L.S.