

CITY OF SURREY

BY-LAW NO. 15115

A by-law to amend "Surrey Zoning By-law, 1993, No. 12000,"
as amended.

.....

The Council of the City of Surrey, in open meeting assembled, ENACTS AS FOLLOWS:

1. Surrey Zoning By-law, 1993, No. 12000, as amended, is hereby further amended pursuant to the provisions of Section 903 of the *Local Government Act*, R.S.B.C. 1996, c.323, as amended, by changing the classification of the following parcels of land, presently shown upon the maps designated as the Zoning Maps and marked as Schedule "A" under Part 3 of Surrey Zoning By-law, 1993, No. 12000, as amended, as follows:

FROM: ONE-ACRE RESIDENTIAL ZONE (RA)

TO: SINGLE FAMILY RESIDENTIAL (9) COACH HOUSE ZONE (RF-9C)

Portion of Parcel Identifier: 002-190-290 Lot 3 Except: Part subdivided by Plan 30315 Section 15 Township 8 New Westminster District Plan 1809, shown on a Survey Plan attached hereto and forming part of this by-law as Schedule A, certified correct by Paul Bartlett, B.C.L.S. on the 28th day of August, 2003, containing 0.314 hectares and called Block "C" and containing 0.719 hectares and called Block "A" and more particularly described as follows:

(Portion of 6842 - 192 Street)

FROM: ONE-ACRE RESIDENTIAL ZONE (RA)

TO: SINGLE FAMILY RESIDENTIAL COACH HOUSE ZONE (RF-12C)

Portion of Parcel Identifier: 002-190-290 Lot 3 Except: Part subdivided by Plan 30315 Section 15 Township 8 New Westminster District Plan 1809, shown on a Survey Plan attached hereto and forming part of this by-law as Schedule A, certified correct by Paul Bartlett, B.C.L.S. on the 28th day of August, 2003, containing 0.544 hectares and called Block "B" and more particularly described as follows:

(Portion of 6842 - 192 Street)

2. This By-law shall be cited for all purposes as "Surrey Zoning By-law, 1993, No. 12000, Amendment By-law, 2003, No. 15115."

PASSED FIRST AND SECOND READING on the 8th day of September, 2003.

PUBLIC HEARING HELD thereon on the 29th day of September, 2003.

PASSED THIRD READING on the 29th day of September, 2003.

RECONSIDERED AND FINALLY ADOPTED, signed by the Mayor and Clerk, and sealed with the Corporate Seal on the 14th day of March, 2005.

_____MAYOR

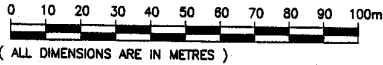
_____CLERK

h:\by-laws\pending\2003\clk15115.blw.doc
LJC 6/10/11 10:09 AM

SURVEY PLAN TO ACCOMPANY CITY OF SURREY BYLAW NUMBER 15115
 LOT 3 EXCEPT PART SUBDIVIDED BY PLAN 30315
 SECTION 15, TOWNSHIP 8,
 NEW WESTMINSTER DISTRICT.
 PLAN 1809.
 B.C.G.S. 92G.016

SCALE : 1:1250

**THIS PLAN IS AT A
 REDUCED SCALE**



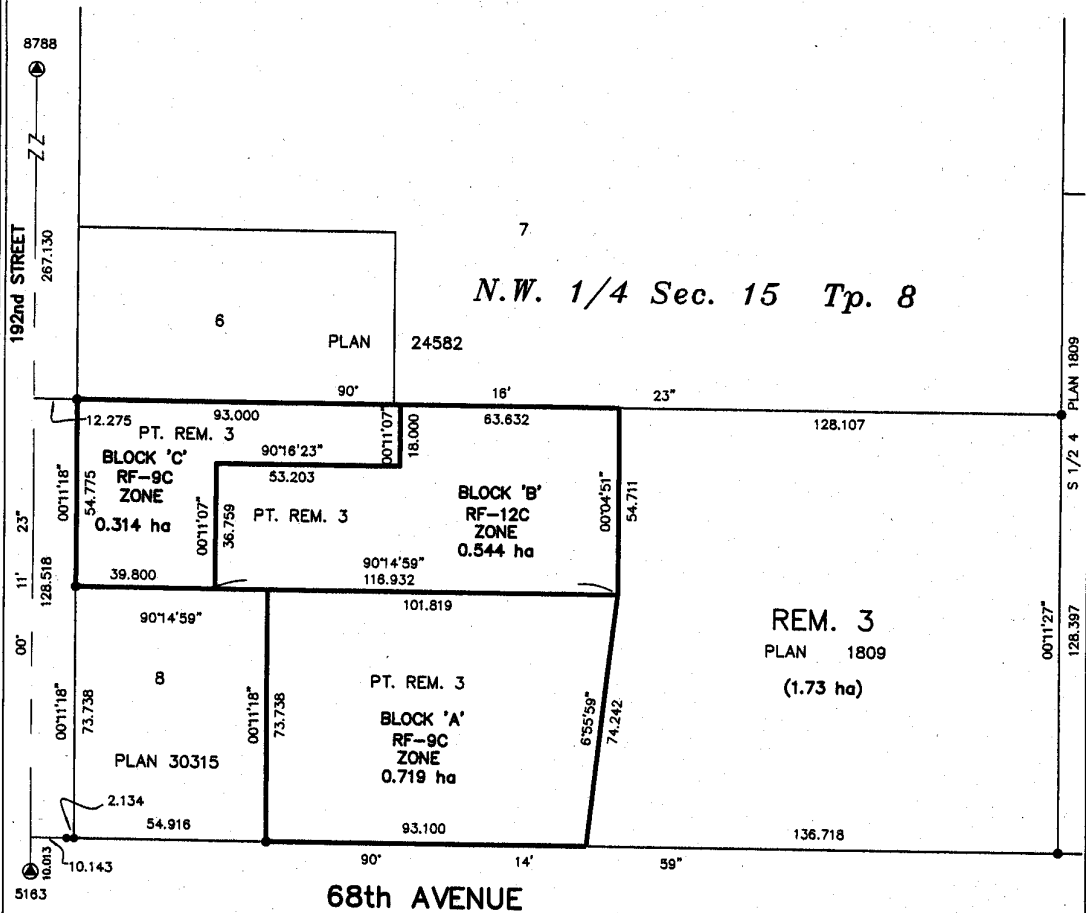
INTEGRATED SURVEY AREA NO.1 (SURREY)

THIS PLAN SHOWS GROUND - LEVEL MEASURED DISTANCES.
 PRIOR TO COMPUTATION OF U.T.M. CO-ORDINATES,
 MULTIPLY BY COMBINED FACTOR 0.9995983

LEGEND

GRID BEARINGS ARE CSRS (NAD83) AND ARE DERIVED FROM OBSERVATIONS
 BETWEEN CONTROL MONUMENTS 5183 AND 8788
 INTEGRATED SURVEY AREA NO.1

SYMBOLS		DESCRIPTION
FOUND	PLACED	
⊙		CONTROL MONUMENT
•		STANDARD IRON POST



CERTIFIED CORRECT ACCORDING TO FIELD SURVEY
 DATED THIS 28th DAY OF AUGUST, 2003.

Paul Bartlett

PAUL BARTLETT, B.C.L.S.

McELHANNAY ASSOCIATES
 PROFESSIONAL LAND SURVEYORS
 13180-88th AVENUE
 SURREY, B.C. V3W 3K3
 PHONE: (604) 598-0391
 FILE : 2112 06920-01 REV.1

THIS PLAN LIES WITHIN THE GREATER VANCOUVER REGIONAL DISTRICT-CITY OF SURREY