

CITY OF SURREY

BY-LAW NO. 15337

A By-law to close and to remove the dedication  
of a highway of a portion of 161 Street.

.....

WHEREAS pursuant to Subsection 40(1)(a) of the *Community Charter*, S.B.C. 2003, c. 26, the Council may, by by-law, close all or part of a highway that is vested in the municipality to all or some types of traffic;

AND WHEREAS pursuant to Section 40(2) of the *Community Charter*, S.B.C. 2003, c. 26, the Council may, by by-law, remove the dedication of a highway that has been closed by a by-law under Subsection 40(1)(a).

NOW THEREFORE the Council of the City of Surrey in open meeting assembled, ENACTS as follows:

1. That portion of road lying in Section 14 Block 5 North Range 1 West New Westminster District, shown outlined in heavy black line and hatched on a Reference Plan attached hereto, and forming part of this by-law, duly signed by the Mayor and Clerk, prepared by Eugene O. Wong, B.C.L.S. on the 30th day of March, 2004, and more particularly described as follows:

That portion of road dedicated by Plan 64353, containing 835 square metres and called Parcel "A",

(hereinafter referred to as that portion of 161 Street)

shall be closed to traffic.

2. The dedication as highway be removed of said portion of 161 Street.
3. This By-law may be cited for all purposes as "Surrey Close and Remove the Dedication of Highway of a Portion of 161 Street between 110 Avenue and 110A Avenue By-law, 2004, No. 15337."

READ A FIRST, SECOND AND THIRD TIME on the 5th day of April, 2004.

NOTICE OF INTENTION

ADVERTISED on the 10th and 11th day of April and on the 17th and 18th day of April, 2004, in the SURREY LEADER/PEACE ARCH Community newspaper.

RECONSIDERED AND FINALLY ADOPTED, signed by the Mayor and Clerk, and sealed with the Corporate Seal on the 19th day of April, 2004.

\_\_\_\_\_ MAYOR

\_\_\_\_\_ CLERK

h:\by-laws\adopted\2004\clk15337.blw.doc

REFERENCE PLAN TO ACCOMPANY CITY OF SURREY HIGHWAY CANCELLATION BYLAW No. 1533Z  
 OF PART OF ROAD DEDICATED BY PLAN 64353, SECTION 14 BLOCK 5 NORTH  
 RANGE 1 WEST NEW WESTMINSTER DISTRICT  
 PURSUANT TO SECTION 120 OF THE LAND TITLE ACT

B.C.G.S. 926.027  
 CITY OF SURREY

THIS PLAN LIES WITHIN THE  
 GREATER VANCOUVER REGIONAL DISTRICT

PLAN BCP \_\_\_\_\_  
 REF No. \_\_\_\_\_

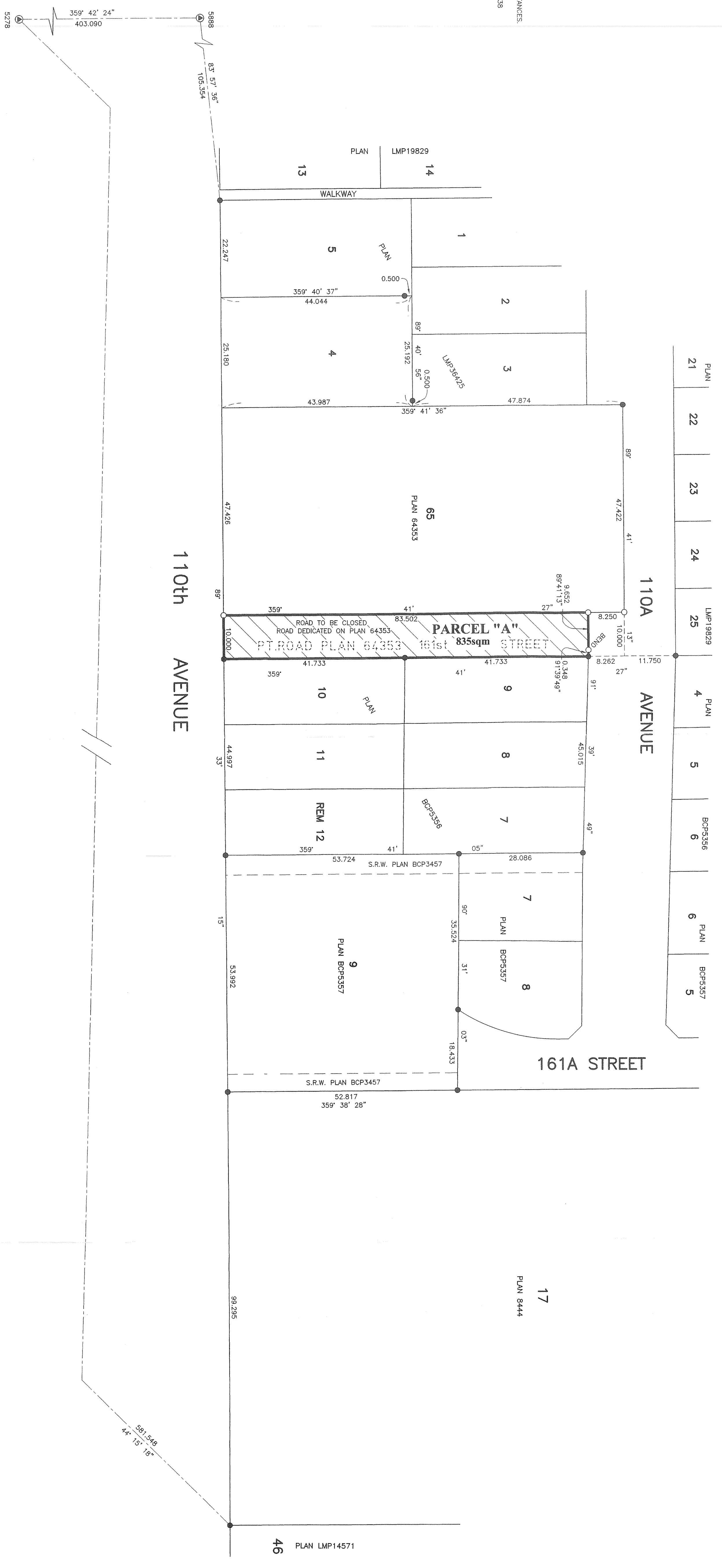
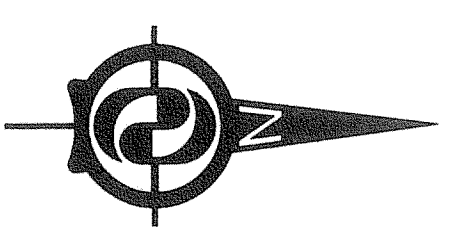
DEPOSITED IN THE LAND TITLE OFFICE OF  
 NEW WESTMINSTER, B.C.  
 THIS \_\_\_\_\_ DAY OF \_\_\_\_\_ 2004

ASSISTANT DEPUTY REGISTRAR

LEGEND  
 SCALE 1:500



- ALL DISTANCES ARE IN METRES  
 GRID BEARINGS ARE DERIVED FROM OBSERVATIONS  
 BETWEEN CONTROL MONUMENT 5278 AND 5888  
 INTEGRATED SURVEY AREA NO.1, SURREY, B.C.  
 NAD83 (CSRS).  
 THIS PLAN SHOWS GROUND-LEVEL MEASURED DISTANCES.  
 PRIOR TO COMPUTATION OF U.T.M. CO-ORDINATES,  
 MULTIPLY BY AVERAGE COMBINED FACTOR 0.99959338
- ⊙ INDICATES CONTROL MONUMENT FOUND
  - INDICATES IRON POST FOUND
  - INDICATES IRON POST PLACED
  - ◻ INDICATES SQUARE METRES



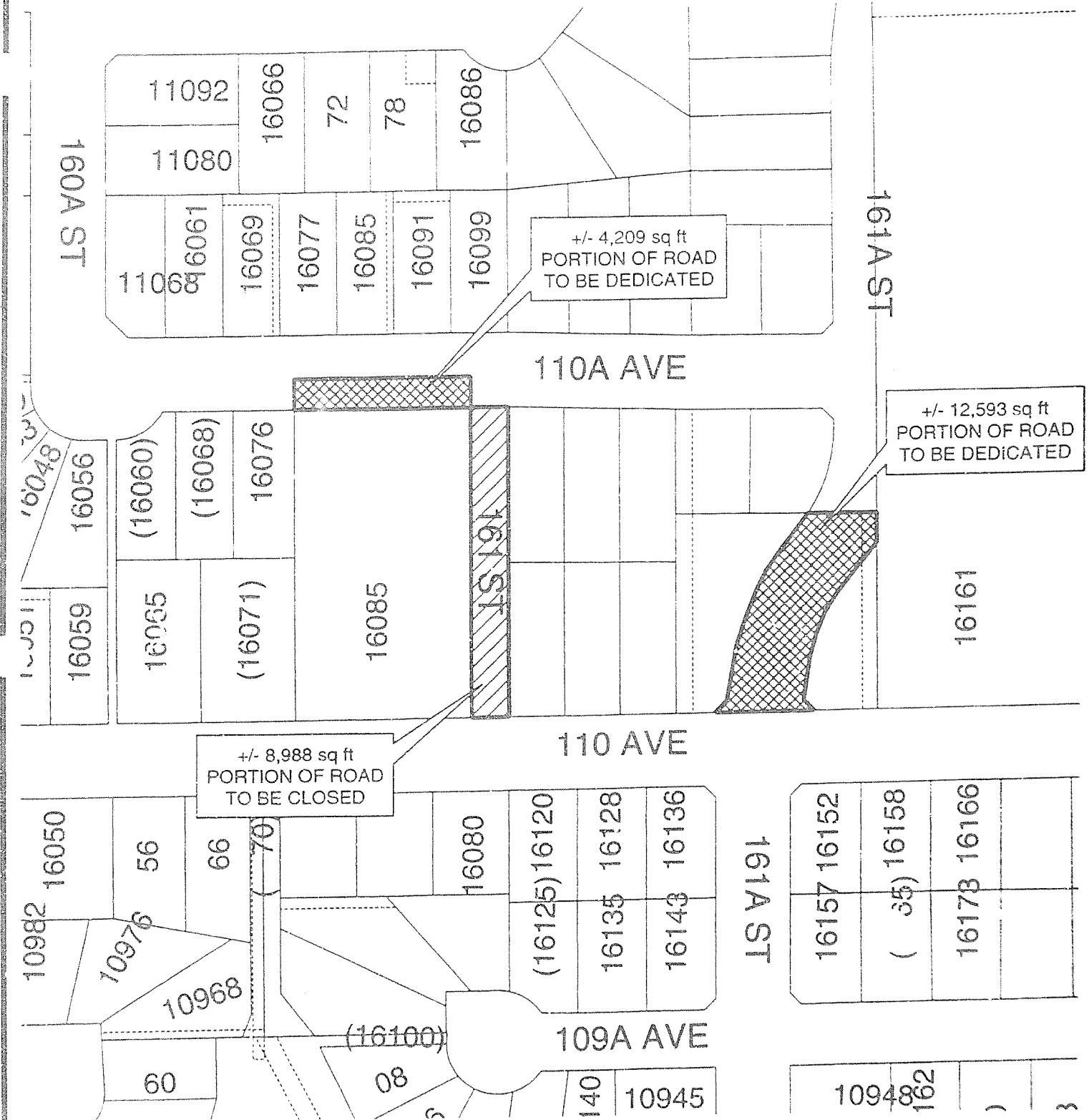
H.Y. AND ASSOCIATES  
 LAND SURVEYING LTD.  
 200, 9128 - 152nd Street  
 Surrey, B.C.  
 V3R 4E7  
 (604) 583-1616  
 (604) 583-1737  
 Job : 031825ALS  
 File : 1825A\_ROAD.DWG

CITY OF SURREY  
 MAYOR: DOUG McCALLUM  
 CITY CLERK: MARGARET JONES  
 WITNESS AS TO THE SIGNATURE OF THE CITY CLERK  
 OCCUPATION OF WITNESS  
 ADDRESS OF WITNESS

I, EUGENE O. WONG, A BRITISH COLUMBIA LAND SURVEYOR  
 OF THE CITY OF BURNABY IN BRITISH COLUMBIA, CERTIFY  
 THAT I WAS PRESENT AT AND PERSONALLY SUPERINTENDED  
 THE SURVEY REPRESENTED BY THIS PLAN AND THAT THE  
 SURVEY AND PLAN ARE CORRECT. THE FIELD SURVEY WAS  
 COMPLETED ON THE 26th DAY OF MARCH 2004.  
 THE PLAN WAS COMPLETED AND CHECKED, AND THE  
 CHECKLIST FILED UNDER ECP#13235, ON THE  
 30th DAY OF MARCH 2004

B.C.L.S.

# APPENDIX I SITE MAP



PRODUCED BY ENGINEERING, GIS SECTION: MARCH 25, 2004, KGS



## ROAD CLOSURE AT 110 AVENUE & 161 STREET

**REALTY  
DIVISION**

The data provided is compiled from various sources and IS NOT warranted as to its accuracy or completeness by the City of Surrey.

This information is provided for information and convenience purposes only.  
Lot sizes, legal descriptions and encumbrances must be confirmed at the Land Title Office.

\\SING\GISMAPS\CORPORATE REPORTS\REALTY\110&161-SM.mxd

