

CITY OF SURREY

BY-LAW NO. 15387

A By-law to close and to remove the dedication
of a highway of a portion of 65A Avenue.

.....

WHEREAS pursuant to Subsection 40(1)(a) of the *Community Charter*, S.B.C. 2003, c. 26, the Council may, by by-law, close all or part of a highway that is vested in the municipality to all or some types of traffic;

AND WHEREAS pursuant to Section 40(2) of the *Community Charter*, S.B.C. 2003, c. 26, the Council may, by by-law, remove the dedication of a highway that has been closed by a by-law under Subsection 40(1)(a).

NOW THEREFORE the Council of the City of Surrey in open meeting assembled, ENACTS as follows:

1. That portion of road lying in Section 16, Township 8, New Westminster District, outlined in heavy black line and hatched on a Reference Plan attached hereto, and forming part of this by-law, duly signed by the Mayor and Clerk, prepared by J.G. Cameron, B.C.L.S. on the 12th day of May, 2004, and more particularly described as follows:

That portion of road dedicated by Plan 18906, containing 0.162 hectares and called Parcel A,

(hereinafter referred to as that portion of 65A Avenue)

shall be closed to traffic.

2. The dedication as highway be removed of said portion of 65A Avenue.
3. This By-law may be cited for all purposes as "Close and Remove the Dedication of Highway of a Portion of 65A Avenue at 186 Street By-law, 2004, No. 15387."

READ A FIRST, SECOND AND THIRD TIME on the 17th day of May, 2004.

NOTICE OF INTENTION

ADVERTISED on the 22nd and 23rd day of May and on the 29th and 30th day of May, 2004, in the SURREY LEADER/PEACE ARCH Community newspaper.

RECONSIDERED AND FINALLY ADOPTED, signed by the Mayor and Clerk, and sealed with the Corporate Seal on the 7th day of June, 2004.

_____ MAYOR

_____ CLERK

REFERENCE PLAN TO ACCOMPANY CITY OF SURREY HIGHWAY DEDICATION
 CANCELLATION BYLAW NO. 15387 COVERING ROAD SHOWN ON PLAN 18906,
 SECTION 16, TOWNSHIP 8, NEW WESTMINSTER DISTRICT

PLAN BCP

Pursuant to Section 120 of the Land Title Act
 City of Surrey BCGS 92G.017

Deposited in the Land Title Office at
 New Westminster, B.C. this _____ day
 of _____, 2004.

15 0 15 30 45

GRAPHIC SCALE - METRES 1:750

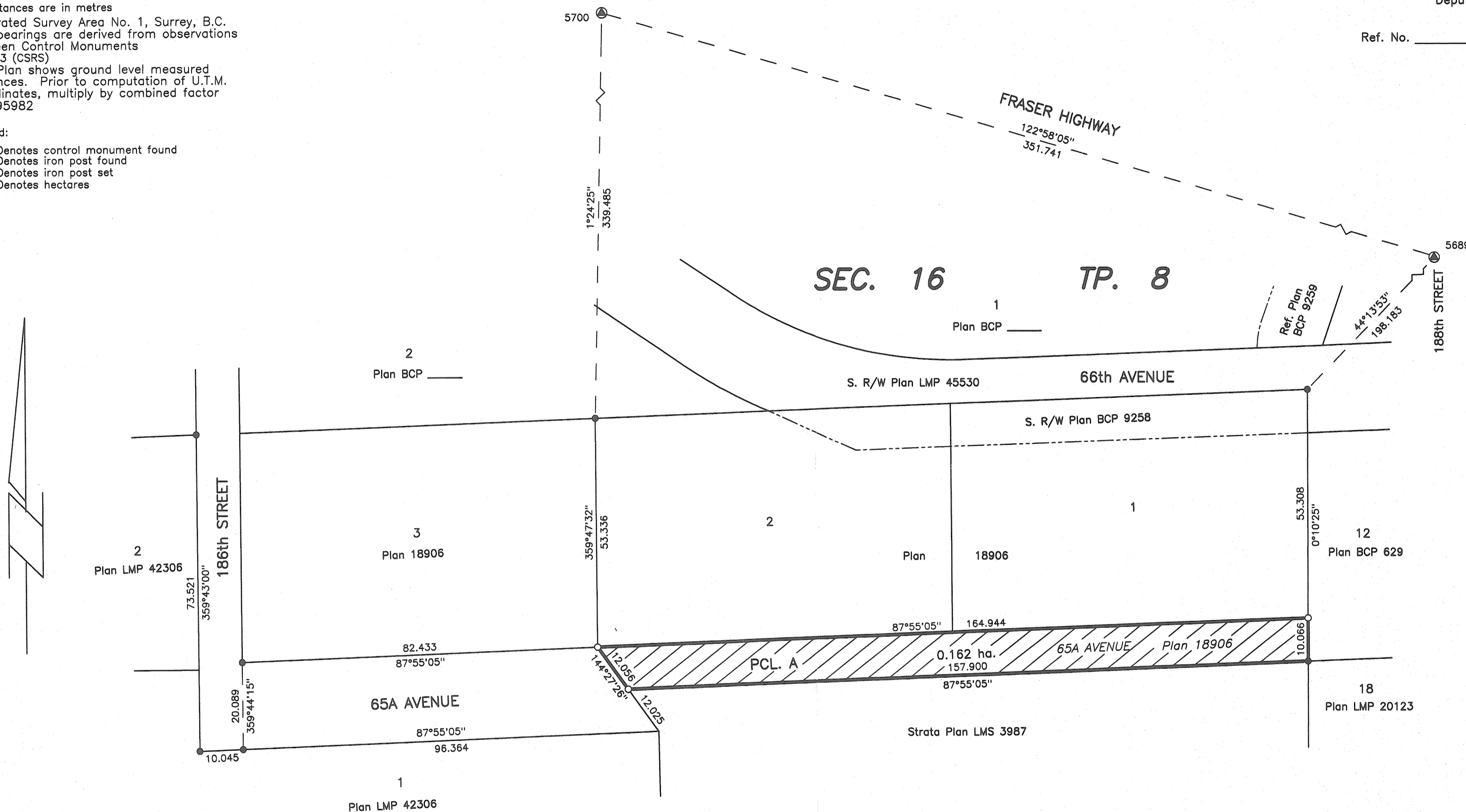
All distances are in metres
 Integrated Survey Area No. 1, Surrey, B.C.
 Grid bearings are derived from observations
 between Control Monuments
 NAD 83 (CSRS)
 This Plan shows ground level measured
 distances. Prior to computation of U.T.M.
 coordinates, multiply by combined factor
 0.9995982

Legend:

- ⊙ Denotes control monument found
- Denotes iron post found
- Denotes iron post set
- ha. Denotes hectares

Deputy Registrar

Ref. No. _____



CITY OF SURREY

Mayor - Douglas McCallum

City Clerk - Margaret Jones

Witness as to signature of the City Clerk

Address of Witness

Occupation of Witness

I, J.G. Cameron, a British Columbia Land Surveyor of Surrey, in British Columbia certify that I was present at and personally superintended the survey represented by this plan, and that the survey and plan are correct. The field survey was completed on the 19th day of January, 2004. The plan was completed and checked, and the checklist filed under #15164, on the 12th day of May, 2004.

J.G. Cameron
 J.G. Cameron, B.C.L.S.

Cameron Land Surveying Ltd.
 B.C. Land Surveyors
 Unit 203-6333-148th St.
 Surrey, B.C. V3S 3C3
 Phone: 597-3777
 Fax: 597-3783

This plan lies within the Greater
 Vancouver Regional District.

File: 4069-RE2