

CITY OF SURREY

BY-LAW NO. 15515

A by-law to amend "Surrey Zoning By-law, 1993, No. 12000,"  
as amended.

.....

The Council of the City of Surrey, in open meeting assembled, ENACTS AS FOLLOWS:

1. Surrey Zoning By-law, 1993, No. 12000, as amended, is hereby further amended pursuant to the provisions of Section 903 of the *Local Government Act*, R.S.B.C. 1996, c.323, as amended, by changing the classification of the following parcels of land, presently shown upon the maps designated as the Zoning Maps and marked as Schedule "A" under Part 3 of Surrey Zoning By-law, 1993, No. 12000, as amended, as follows:

FROM: HIGHWAY COMMERCIAL INDUSTRIAL ZONE (CHI)  
TO: LIGHT IMPACT INDUSTRIAL ZONE (IL)

Portion of Parcel Identifier: 003-665-364, Lot 105 Except: Part Dedicated Road on Plan LMP53810 Section 20 Township 2 New Westminster District Plan 65727, shown on a Survey Plan attached hereto and forming part of this by-law as Schedule A, certified correct by D.J. Dyck, B.C.L.S. on the 23rd day of August, 2004, called Block "B" and containing 0.196 hectares, and more particularly described as follows:

(Portion of 13498 - 73 Avenue)

2. This By-law shall be cited for all purposes as "Surrey Zoning By-law, 1993, No. 12000, Amendment By-law, 2004, No. 15515."

PASSED FIRST AND SECOND READING on the 27th day of September, 2004.

PUBLIC HEARING HELD thereon on the 18th day of October, 2004.

PASSED THIRD READING on the 18th day of October, 2004.

RECONSIDERED AND FINALLY ADOPTED, signed by the Mayor and Clerk, and sealed  
with the Corporate Seal on the 21st day of February, 2005.

\_\_\_\_\_MAYOR

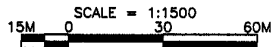
\_\_\_\_\_CLERK

h:\by-laws\adopted\2005\clk15515.blw.doc  
LN 6/8/11 2:37 PM

**SCHEDULE A**

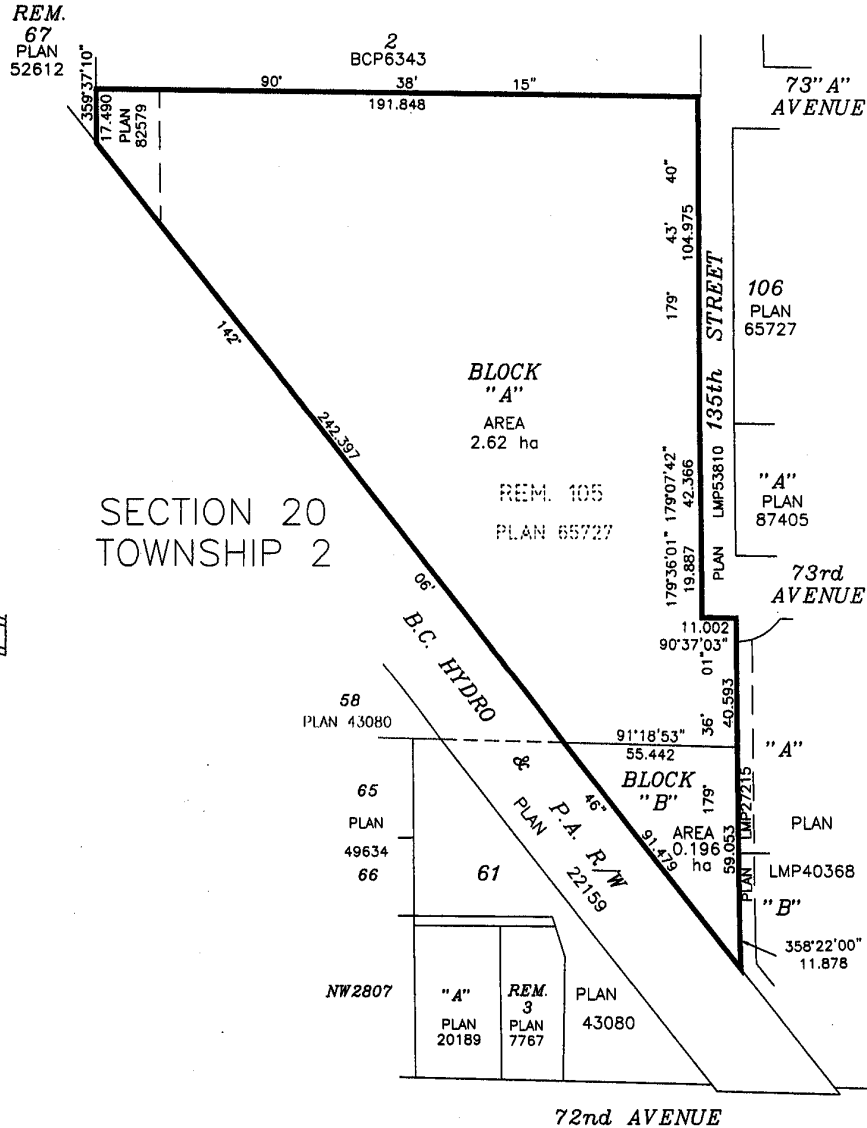
SURVEY PLAN TO ACCOMPANY CITY OF SURREY ZONING BYLAW No. 15515  
 OF LOT 105, EXCEPT: PART DEDICATED ROAD ON PLAN LMP53810  
 SECTION 20 TOWNSHIP 2 N.W.D. PLAN 65727

CITY OF SURREY  
 B.C.G.S. 92G.016



"ALL DISTANCES ARE IN METRES"

BOOK OF REFERENCE					
LOT	DESCRIPTION	PLAN	AREA		
PART OF REM. 105	SEC. 20 TP. 2	65727	2.62 ha	BLOCK "A"	
PART OF REM. 105	SEC. 20 TP. 2	65727	0.196 ha	BLOCK "B"	



CERTIFIED CORRECT ACCORDING TO  
 LAND TITLE OFFICE RECORDS DATED  
 THIS 23 DAY OF AUGUST, 2004

SOUTH FRASER LAND SURVEYING LTD.  
 #101-7485 130th STREET  
 SURREY, B.C.  
 604-599-1886  
 04089ZON

THIS PLAN LIES WITHIN THE GREATER  
 VANCOUVER REGIONAL DISTRICT

*[Signature]*  
 SIGNATURE OF S.C.L.S.

04089ZON