

CITY OF SURREY

BY-LAW NO. 15545

A By-law to close and to remove the dedication
of a highway of a portion of Lane at 66A Avenue and 134 Street.

.....

WHEREAS pursuant to Subsection 40(1)(a) of the *Community Charter*, S.B.C. 2003, c. 26, the Council may, by by-law, close all or part of a highway that is vested in the municipality to all or some types of traffic;

AND WHEREAS pursuant to Section 40(2) of the *Community Charter*, S.B.C. 2003, c. 26, the Council may, by by-law, remove the dedication of a highway that has been closed by a by-law under Subsection 40(1)(a).

NOW THEREFORE the Council of the City of Surrey in open meeting assembled, ENACTS as follows:

1. That portion of road lying in Section 17 Township 2 New Westminster District, shown outlined in heavy black line on a Reference Plan attached hereto, and forming part of this by-law, duly signed by the Mayor and Clerk, prepared by Dieter Soukup, B.C.L.S. on the 27th day of October, 2004, and more particularly described as follows:

That portion of road dedicated by Plan 19068, containing 273.8 square metres and called Parcel "One";

(hereinafter referred to as that portion of Lane)

shall be closed to traffic.

2. The dedication as highway be removed of said portion of Lane.
3. This By-law may be cited for all purposes as "Surrey Close and Remove the Dedication of Highway of a Portion of Lane at 66A Avenue and 134 Street By-law, 2004, No. 15545".

READ A FIRST, SECOND AND THIRD TIME on the 15th day of November, 2004.

NOTICE OF INTENTION

ADVERTISED on the 20th and 21st day of November and on the 27th and 28th day of November, 2004, in the SURREY LEADER/PEACE ARCH Community newspaper.

RECONSIDERED AND FINALLY ADOPTED, signed by the Mayor and Clerk, and sealed with the Corporate Seal on the 29th day of November, 2004.

_____ MAYOR

_____ CLERK

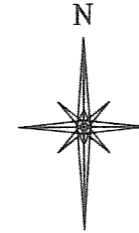
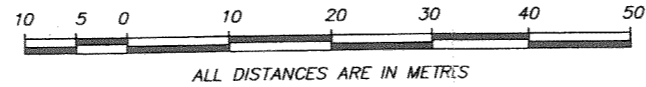
h:\by-laws\adopted\2004\clk15545.blw.doc

**REFERENCE PLAN TO ACCOMPANY CITY OF SURREY HIGHWAY DEDICATION CANCELLATION BY-LAW NUMBER 15345
OF A PORTION OF ROAD LYING IN SECTION 17 TOWNSHIP 2 NEW WESTMINSTER DISTRICT, DEDICATED BY PLAN 19068**

B.C.G.S. 92G.016
PURSUANT TO SECTION 120, LAND TITLE ACT AND SECTION 40 COMMUNITY CHARTER
INTEGRATED SURVEY AREA No. 1 SURREY

THIS PLAN SHOWS GROUND LEVEL MEASURED DISTANCES.
PRIOR TO COMPUTATION OF U.T.M. COORDINATES MULTIPLY
BY COMBINED FACTOR OF 0.9995940
GRID BEARINGS ARE NAD83 (CSRS) DERIVED FROM
CONTROL MONUMENTS 5847 AND 5446

SCALE 1 : 750

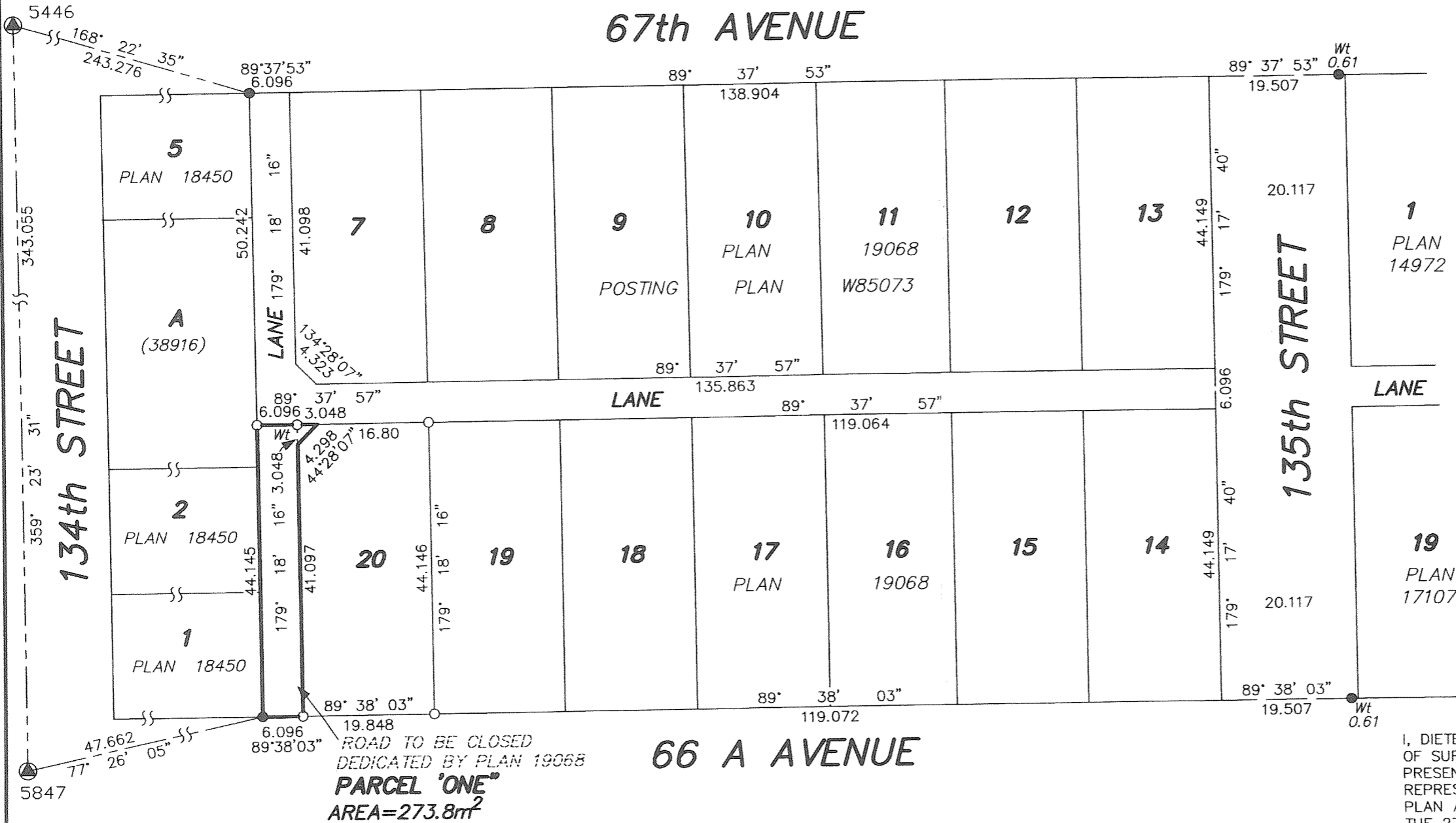


PLAN BCP_____

DEPOSITED IN THE LAND TITLE OFFICE
AT NEW WESTMINSTER B.C.
THIS ____ DAY OF _____, 2004

DEPUTY REGISTRAR

REF. No. _____



CITY OF SURREY

MAYOR: DOUGLAS McCALLUM

CITY CLERK:

WITNESS AS TO THE SIGNATURE OF THE CITY CLERK

ADDRESS OF WITNESS

OCCUPATION OF WITNESS

LEGEND

- ▲ DENOTES CONTROL MONUMENT FOUND
- DENOTES STANDARD IRON POST FOUND
- DENOTES STANDARD IRON POST SET
- Wt DENOTES WITNESS
- m² DENOTES SQUARE METRES

I, DIETER SOUKUP, A BRITISH COLUMBIA LAND SURVEYOR, OF SURREY, IN BRITISH COLUMBIA, CERTIFY THAT I WAS PRESENT AT AND PERSONALLY SUPERINTENDED THE SURVEY REPRESENTED BY THIS PLAN, AND THAT THE SURVEY AND PLAN ARE CORRECT. THE FIELD SURVEY WAS COMPLETED ON THE 27th DAY OF OCTOBER, 2004. THE PLAN WAS COMPLETED AND CHECKED AND THE CHECKLIST FILED UNDER ECP#22970 ON THE 27th DAY OF OCTOBER, 2004

B.C.L.S.

SOUKUP LAND SURVEYING INC.
201 - 8484 162nd STREET
SURREY B.C. V4N 1B4
TEL 597 6161 FAX 597 0259
FILE: 5429 DISK: CD-1
DWG:5429-UTM

THIS PLAN LIES WITHIN THE GREATER VANCOUVER REGIONAL DISTRICT