

CITY OF SURREY

BY-LAW NO. 16003

A By-law to close and to remove the dedication
of a highway of a portion of Lane.

.....

WHEREAS pursuant to Subsection 40(1)(a) of the *Community Charter*, S.B.C. 2003, c. 26, the Council may, by by-law, close all or part of a highway that is vested in the municipality to all or some types of traffic;

AND WHEREAS pursuant to Section 40(2) of the *Community Charter*, S.B.C. 2003, c. 26, the Council may, by by-law, remove the dedication of a highway that has been closed by a by-law under Subsection 40(1)(a).

NOW THEREFORE the Council of the City of Surrey in open meeting assembled, ENACTS as follows:

1. That portion of road lying in Section 26 Township 2 New Westminster District, shown hatched on a Reference Plan attached hereto, and forming part of this by-law, duly signed by the Mayor and Clerk, prepared by Gene Nikula, B.C.L.S. on the 7th day of March, 2006, and more particularly described as follows:

That portion of road dedicated on Plan 16674, containing 298.8 square metres and called Parcel "A",

(hereinafter referred to as that portion of Lane)

shall be closed to traffic.

2. The dedication as highway be removed of said portion of Lane.
3. This By-law may be cited for all purposes as "Surrey Close and Remove the Dedication of Highway of a Portion of Lane at Fraser Highway and 159 Street By-law No. 16003".

READ A FIRST, SECOND AND THIRD TIME on the 24th day of April, 2006.

NOTICE OF INTENTION

ADVERTISED on the 29th and 30th day of April and on the 6th and 7th day of May, 2006, in the SURREY LEADER/PEACE ARCH Community newspaper.

RECONSIDERED AND FINALLY ADOPTED, signed by the Mayor and Clerk, and sealed with the Corporate Seal on the 8th day of May, 2006.

_____ MAYOR

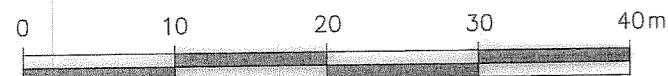
_____ CLERK

REFERENCE PLAN TO ACCOMPANY THE CITY OF SURREY HIGHWAY
DEDICATION CANCELLATION BYLAW NO. 16003 COVERING ROAD SHOWN
ON PLAN 16674 SECTION 26 TOWNSHIP 2
NEW WESTMINSTER DISTRICT

PURSUANT TO SECTION 120 OF THE LAND TITLE ACT AND SEC. 40 COMMUNITY CHARTER
B.C.G.S. 92G017
CITY OF SURREY

LEGEND

SCALE 1:500

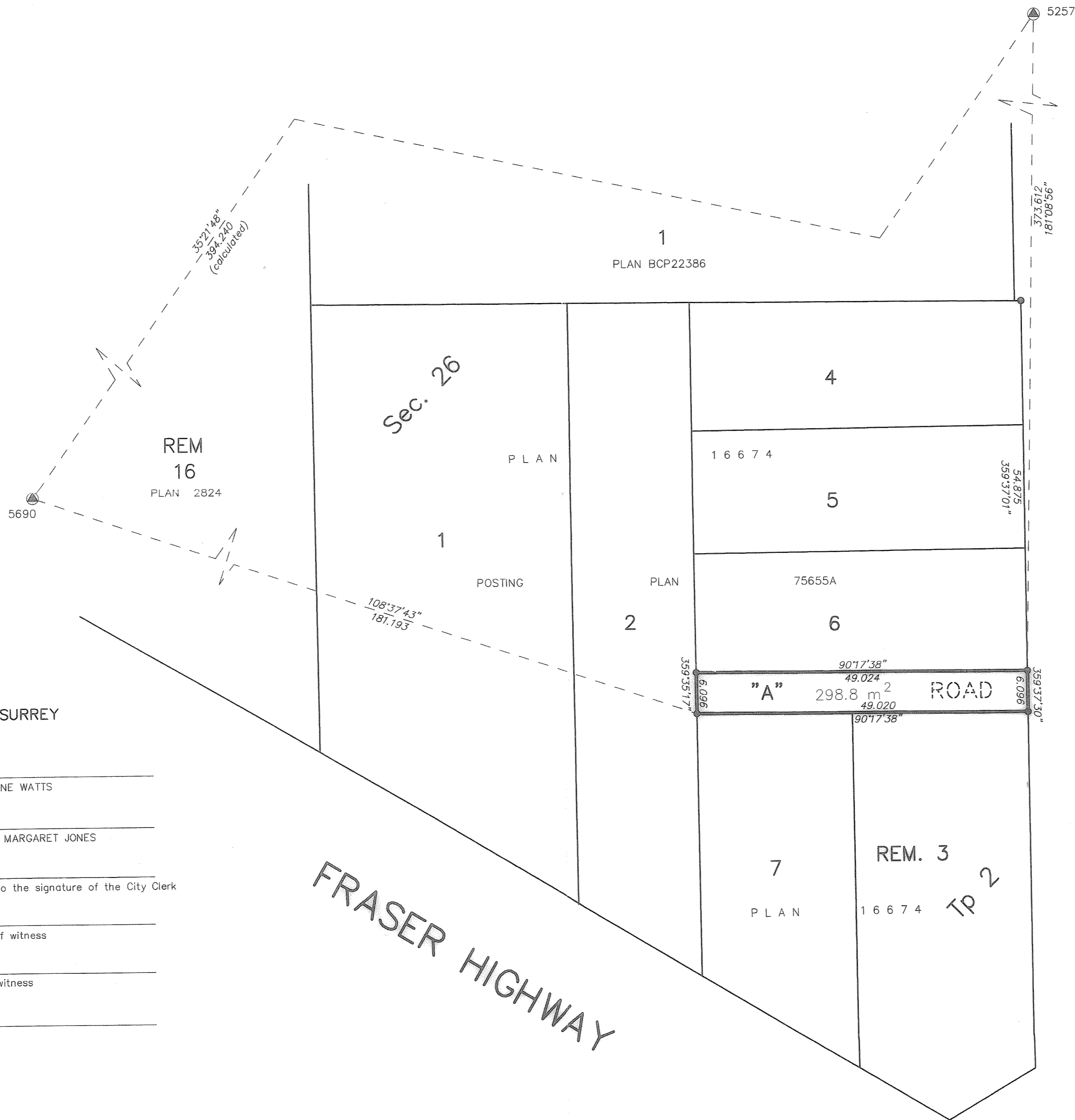
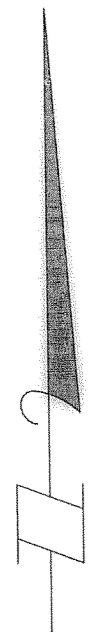


(All distances are in metres)

Grid bearings are derived from observations between control monuments 5690 and 5257, Integrated Survey Area No. 1, Surrey, B.C. NAD 83 (CSRS)

- ⊙ Indicates control monument found
- Indicates iron post found

This plan shows ground-level measured distances. Prior to computation of U.T.M. co-ordinates, multiply by average combined factor 0.99959205.



CITY OF SURREY

MAYOR: DIANNE WATTS

CITY CLERK: MARGARET JONES

Witness as to the signature of the City Clerk

Occupation of witness

Address of witness

DHALIWAL & ASSOCIATES
LAND SURVEYING INC.

121 - 13140 80th Avenue
Surrey, B.C.
V3W 3E2
(ph) 604 501-6188
(fx) 604 501-6189
FILE : 0506005-RX1.DWG

THIS PLAN LIES WITHIN THE GREATER VANCOUVER REGIONAL DISTRICT

PLAN BCP

REF. No. _____

Deposited in the Land Title Office at
New Westminster, B.C.

This _____ day of _____ 2006.

Assistant Deputy Registrar

159th STREET

FRASER HIGHWAY

I, Gene Paul Nikula, a British Columbia Land Surveyor, of Mission, in British Columbia, certify that I was present at and personally superintended the survey represented by this plan and that the survey and plan are correct. The field survey was completed on the 7th day of March, 2006. The plan was completed and checked, and the checklist filed under ECP # 45461, on the 10th day of March, 2006.

Gene Nikula

B.C.L.S. 803