

CITY OF SURREY

BY-LAW NO. 16019

A By-law to close and to remove the dedication
of a highway of portions of King George Highway.

.....

WHEREAS pursuant to Subsection 40(1)(a) of the *Community Charter*, S.B.C. 2003, c. 26, the Council may, by by-law, close all or part of a highway that is vested in the municipality to all or some types of traffic;

AND WHEREAS pursuant to Section 40(2) of the *Community Charter*, S.B.C. 2003, c. 26, the Council may, by by-law, remove the dedication of a highway that has been closed by a by-law under Subsection 40(1)(a).

NOW THEREFORE the Council of the City of Surrey in open meeting assembled, ENACTS as follows:

1. Those portions of road lying in Section 14 Township 1 New Westminster District, shown outlined in heavy black line on a Reference Plan attached hereto, and forming part of this by-law, duly signed by the Mayor and Clerk, prepared by Scott E. Netherton, B.C.L.S. on the 20th day of April, 2006, and more particularly described as follows:

That portion of road dedicated on Plan 5388, containing 99.8 square metres and called Parcel "A",

That portion of road dedicated on Plan 5388, containing 139.9 square metres and called Parcel "B",

That portion of road dedicated on Plan 5388, containing 146.5 square metres and called Parcel "C",

That portion of road dedicated on Plan 5388, containing 152.1 square metres and called Parcel "D",

That portion of road dedicated on Plan 5388, containing 127.4 square metres and called Parcel "E",

(hereinafter referred to as those portions of King George Highway)

shall be closed to traffic.

2. The dedication as highway be removed of said portions of King George Highway.
3. This By-law may be cited for all purposes as "Surrey Close and Remove the Dedication of Highway of Portions of King George Highway at 24 Avenue By-law, 2006, No. 16019".

READ A FIRST, SECOND AND THIRD TIME on the 15th day of May, 2006.

NOTICE OF INTENTION

ADVERTISED on the 20th and 21st day of May and on the 27th and 28th day May, 2006, in the SURREY LEADER/PEACE ARCH Community newspaper.

RECONSIDERED AND FINALLY ADOPTED, signed by the Mayor and Clerk, and sealed with the Corporate Seal on the 29th day of May, 2006.

_____ MAYOR

_____ CLERK

REFERENCE PLAN TO ACCOMPANY CITY OF SURREY HIGHWAY DEDICATION CANCELLATION
 BYLAW NUMBER 16019 OF PORTIONS OF ROAD LYING IN SEC. 14 TP. 1 N.W.D.
 DEDICATED BY PLAN 5388
 B.C.G.S. 92G.007

PLAN BCP _____

DEPOSITED IN THE LAND TITLE OFFICE
 AT NEW WESTMINSTER, B.C.

_____, 2006.

PURSUANT TO SECTION 120, LAND TITLE ACT
 PURSUANT TO SECTION 40, COMMUNITY CHARTER

LEGEND

- ⊙ DENOTES CONTROL MONUMENT FOUND
- DENOTES STANDARD IRON POST FOUND
- DENOTES STANDARD IRON POST SET

INTEGRATED SURVEY AREA NO. 1, SURREY, NAD83 (CSRS)

GRID BEARINGS ARE DERIVED FROM OBSERVATIONS BETWEEN
 GEODETIC CONTROL MONUMENTS 5743 AND 5742.

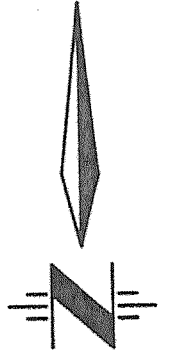
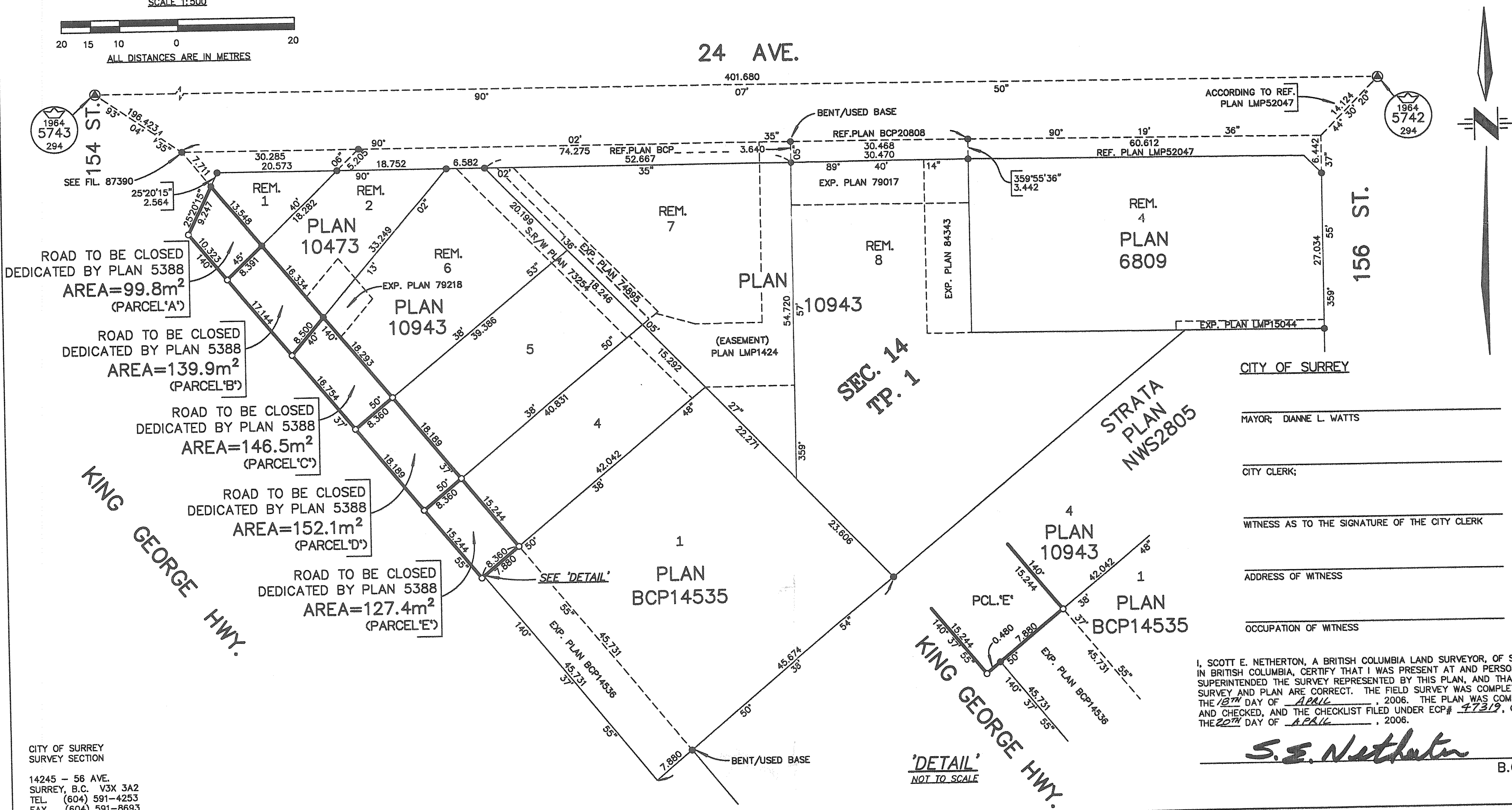
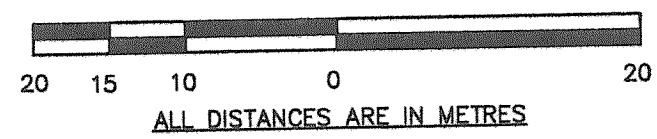
THIS PLAN SHOWS HORIZONTAL GROUND-LEVEL DISTANCES EXCEPT
 WHERE OTHERWISE NOTED. TO COMPUTE GRID DISTANCES, MULTIPLY
 GROUND LEVEL DISTANCES BY COMBINED FACTOR 0.9995907.

BOOK OF REFERENCE		
DESCRIPTION	AREA	PARCEL
ROAD TO BE CLOSED		
PORTION OF ROAD LYING IN SEC. 14 TP. 1 N.W.D. DEDICATED BY PLAN 5388	99.8 m ²	PARCEL 'A'
PORTION OF ROAD LYING IN SEC. 14 TP. 1 N.W.D. DEDICATED BY PLAN 5388	139.9 m ²	PARCEL 'B'
PORTION OF ROAD LYING IN SEC. 14 TP. 1 N.W.D. DEDICATED BY PLAN 5388	146.5 m ²	PARCEL 'C'
PORTION OF ROAD LYING IN SEC. 14 TP. 1 N.W.D. DEDICATED BY PLAN 5388	152.1 m ²	PARCEL 'D'
PORTION OF ROAD LYING IN SEC. 14 TP. 1 N.W.D. DEDICATED BY PLAN 5388	127.4 m ²	PARCEL 'E'

REGISTRAR

THIS PLAN LIES WITHIN THE GREATER
 VANCOUVER REGIONAL DISTRICT

SCALE 1:500



CITY OF SURREY

MAYOR: DIANNE L. WATTS

CITY CLERK:

WITNESS AS TO THE SIGNATURE OF THE CITY CLERK

ADDRESS OF WITNESS

OCCUPATION OF WITNESS

I, SCOTT E. NETHERTON, A BRITISH COLUMBIA LAND SURVEYOR, OF SURREY,
 IN BRITISH COLUMBIA, CERTIFY THAT I WAS PRESENT AT AND PERSONALLY
 SUPERINTENDED THE SURVEY REPRESENTED BY THIS PLAN, AND THAT THE
 SURVEY AND PLAN ARE CORRECT. THE FIELD SURVEY WAS COMPLETED ON
 THE 13TH DAY OF APRIL, 2006. THE PLAN WAS COMPLETED
 AND CHECKED, AND THE CHECKLIST FILED UNDER ECP# 47319, ON
 THE 20TH DAY OF APRIL, 2006.

S.E. Netherton

B.C.L.S.

CITY OF SURREY
 SURVEY SECTION
 14245 - 56 AVE.
 SURREY, B.C. V3X 3A2
 TEL. (604) 591-4253
 FAX. (604) 591-8693

'DETAIL'
 NOT TO SCALE