

CITY OF SURREY

BY-LAW NO. 16029

A By-law to close and to remove the dedication
of a highway of a portion of 140 Street.

.....

WHEREAS pursuant to Subsection 40(1)(a) of the *Community Charter*, S.B.C. 2003, c. 26, the Council may, by by-law, close all or part of a highway that is vested in the municipality to all or some types of traffic;

AND WHEREAS pursuant to Section 40(2) of the *Community Charter*, S.B.C. 2003, c. 26, the Council may, by by-law, remove the dedication of a highway that has been closed by a by-law under Subsection 40(1)(a).

NOW THEREFORE the Council of the City of Surrey in open meeting assembled, ENACTS as follows:

1. That portion of road lying in the South West Quarter Section 16 Township 2 New Westminster District, shown outlined in heavy black line on a Reference Plan attached hereto, and forming part of this by-law, duly signed by the Mayor and Clerk, prepared by Gu Gordon Yu, B.C.L.S. on the 31st day of May, 2006, and more particularly described as follows:

That portion of road dedicated by Plan 2163, containing 423.5 square metres and called Parcel A,

(hereinafter referred to as that portion of 140 Street)

shall be closed to traffic.

2. The dedication as highway be removed of said portion of 140 Street.
3. This By-law may be cited for all purposes as "Surrey Close and Remove the Dedication of Highway of a Portion of 140 Street at 68 Avenue By-law, 2006, No. 16029".

READ A FIRST, SECOND AND THIRD TIME on the 12th day of June, 2006.

NOTICE OF INTENTION

ADVERTISED on the 17th and 18th day of June and on the 24th and 25th day of June, 2006, in the SURREY LEADER/PEACE ARCH Community newspaper.

RECONSIDERED AND FINALLY ADOPTED, signed by the Mayor and Clerk, and sealed with the Corporate Seal on the 26th day of June, 2006.

_____ MAYOR

_____ CLERK

REFERENCE PLAN TO ACCOMPANY CITY OF SURREY
 HIGHWAY DEDICATION CANCELLATION BYLAW NO. 16029
 OF PORTION OF ROAD DEDICATED BY PLAN 2163
 SOUTH WEST QUARTER SECTION 16 TOWNSHIP 2 NEW WESTMINSTER DISTRICT

PLAN BCP

REF No. _____

DEPOSITED IN THE LAND TITLE OFFICE OF
 NEW WESTMINSTER, B.C.

THIS _____ DAY OF _____ 2006

ASSISTANT DEPUTY REGISTRAR

BOOK OF REFERENCE

DESCRIPTION	TOTAL AREA
PORTION OF ROAD ON PLAN 2163 (PARCEL "A")	423.5 Sq.m.

PURSUANT TO SECTION 120 OF THE LAND TITLE ACT
 AND SECTION 40(2) OF THE COMMUNITY CHARTER

B.C.G.S 92G.016
 CITY OF SURREY

LEGEND

SCALE 1:500



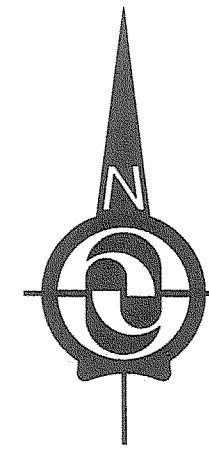
ALL DISTANCES ARE IN METRES

GRID BEARINGS ARE DERIVED FROM OBSERVATIONS
 BETWEEN CONTROL MONUMENT 5928 AND 86H1274
 INTEGRATED SURVEY AREA NO.1, SURREY, B.C.
 NAD83 (CSRS) - 2005.

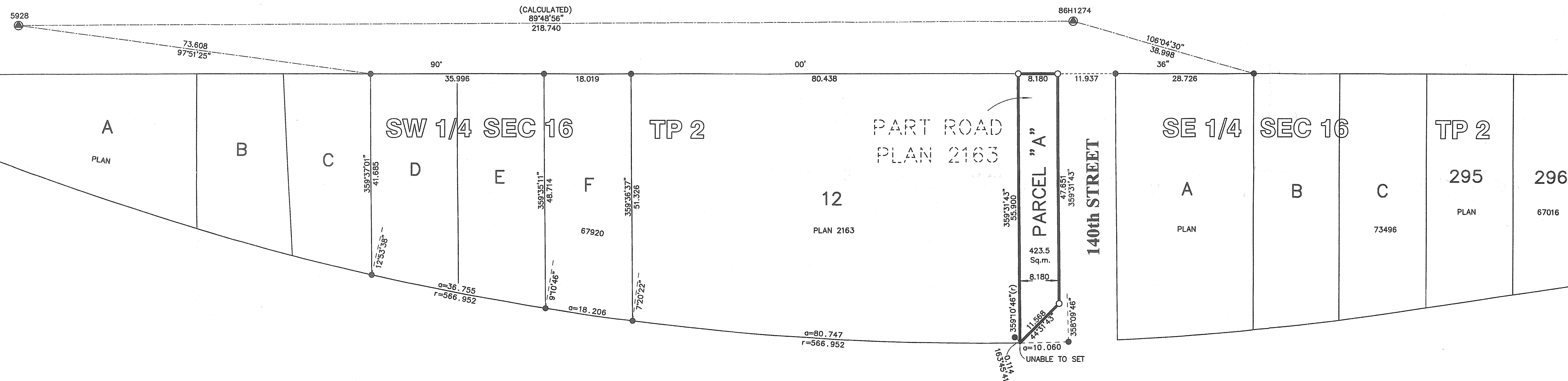
- ⊙ INDICATES CONTROL MONUMENT FOUND
- INDICATES STANDARD IRON POST FOUND
- INDICATES STANDARD IRON POST PLACED
- Sq.m. INDICATES SQUARE METRES

THIS PLAN SHOWS GROUND-LEVEL MEASURED DISTANCES.
 PRIOR TO COMPUTATION OF U.T.M. CO-ORDINATES,
 MULTIPLY BY AVERAGE COMBINED FACTOR 0.9995967

THIS PLAN LIES WITHIN THE
 GREATER VANCOUVER REGIONAL DISTRICT



68th AVENUE



B.C. HYDRO
 SRW PLAN 22160

CITY OF SURREY

MAYOR: DIANNE WATTS

CITY CLERK: MARGARET JONES

WITNESS AS TO THE SIGNATURE OF THE CITY CLERK

PRINT NAME OF WITNESS

ADDRESS OF WITNESS

OCCUPATION OF WITNESS

H.Y. AND ASSOCIATES
 LAND SURVEYING LTD.
 200, 9128 - 152nd STREET
 SURREY, B.C.
 V3R 4E7
 (ph) 583-1616
 (fx) 583-1737
 Job: 991396ALS
 File: 991396A_RD.DWG

I, GU GORDON YU, A BRITISH COLUMBIA LAND SURVEYOR
 OF THE CITY OF SURREY IN BRITISH COLUMBIA, CERTIFY
 THAT I WAS PRESENT AT AND PERSONALLY SUPERINTENDED
 THE SURVEY REPRESENTED BY THIS PLAN AND THAT THE
 SURVEY AND PLAN ARE CORRECT. THE FIELD SURVEY WAS
 COMPLETED ON THE 26TH DAY OF MAY 2006.
 THE PLAN WAS COMPLETED AND CHECKED, AND
 CHECKLIST FILED UNDER ECP#49244, ON THE
 31ST DAY OF MAY 2006.

B.C.L.S.